

NOW OFFERING

-DISCOUNTED RENT

-1 MECHANIC'S INSTITUTE

MEMBERSHIP FOR EVERY

250 RSF LEASED

CALL FOR DETAILS

**57
POST**

OFFICE BUILDING
NOW LEASING
238 - 1,464 RSF

Iconic San Francisco Office Building in the Heart of Financial District

Bryan B. Colton

(415) 595-6959

bryancolton@coltoncommercialsf.com

License #: 02111407

Bradley L. Colton

(415) 515-2333

bcolton@coltoncommercialsf.com

License #: 00805116

Tori DeCoite

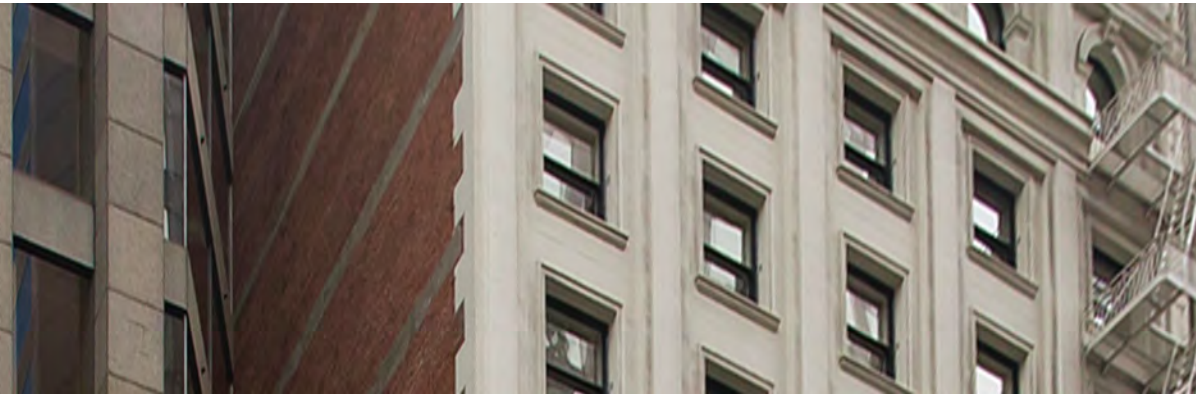
(415) 730-1117

tdecoite@coltoncommercialsf.com

License #: 02042753



Mechanics' Institute Building - Financial District



BUILDING HIGHLIGHTS:

- Heart of Financial District
- Building Security Guard
- 1/2 Block from Montgomery BART Station
- Mix of Small and Large Office Space
- Excellent Natural Light
- Operable Windows and High Ceilings
- Library and Conference Room Amenities available
- Some Furniture available



NOW AVAILABLE SPACES:

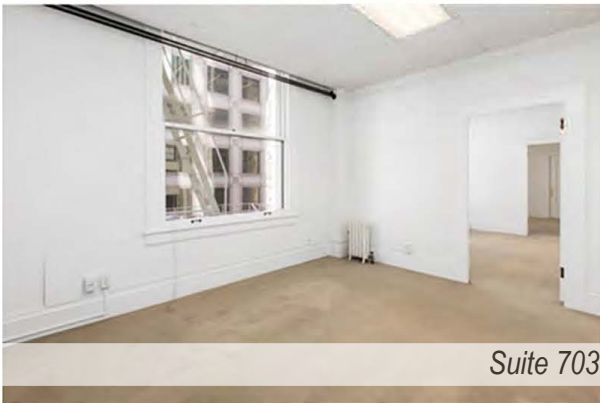
SUITE 509:	+/- 244 RSF	
SUITE 604/607:	+/- 1,464 RSF	VIRTUAL TOUR LINK
SUITE 613/614:	+/- 488 RSF	Suites can be leased as a whole or separately
SUITE 703/705:	+/- 949 RSF	VIRTUAL TOUR LINK
SUITE 710/711:	+/- 509 RSF	VIRTUAL TOUR LINK Suites can be leased as a whole or separately
SUITE 712:	+/- 244 RSF	
SUITE 804/806:	+/- 1,138 RSF	VIRTUAL TOUR LINK
SUITE 813:	+/- 244 RSF	VIRTUAL TOUR LINK Suite has small waiting room/reception area.
SUITE 814:	+/- 244 RSF	VIRTUAL TOUR LINK Suite has small waiting room/reception area.
SUITE 815:	+/- 238 RSF	
SUITE 904:	+/- 1,139 RSF	VIRTUAL TOUR LINK
SUITE 913:	+/- 244 RSF	



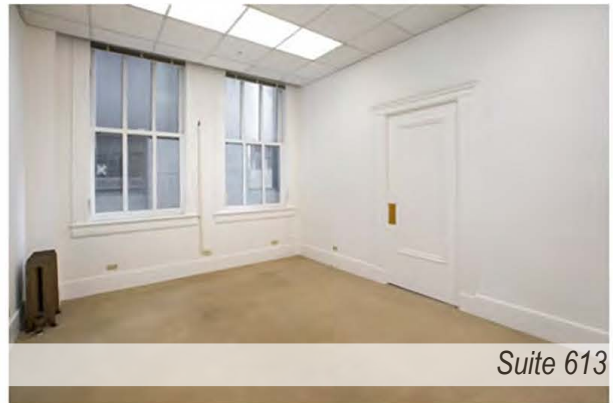
Suite 703



Suite 712



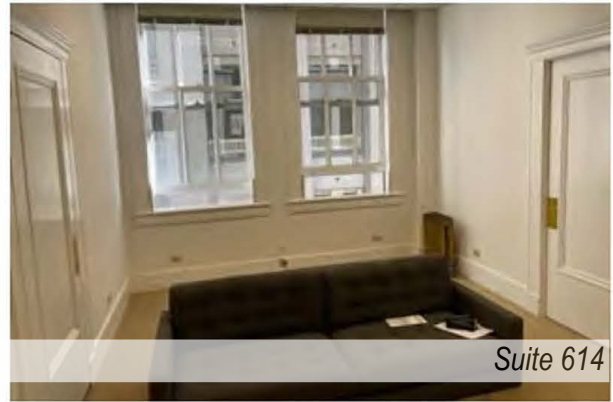
Suite 703



Suite 613



Suite 913



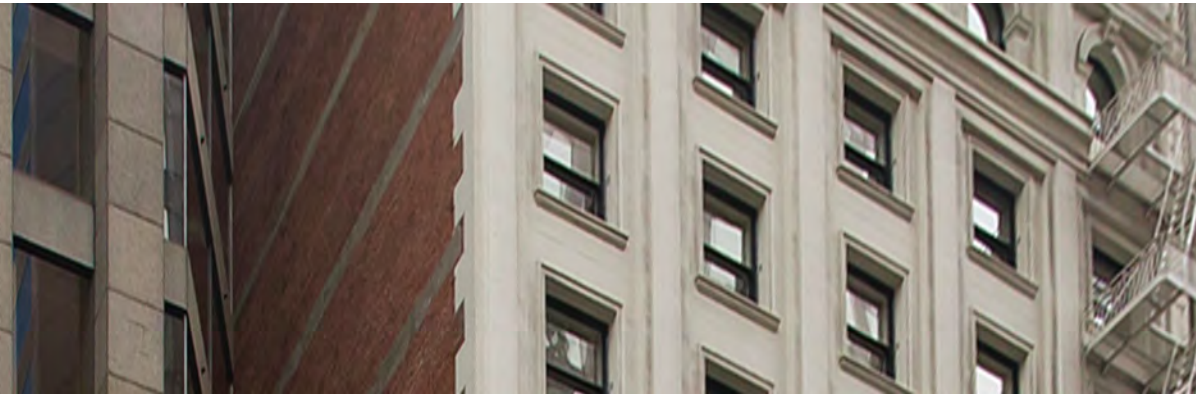
Suite 614



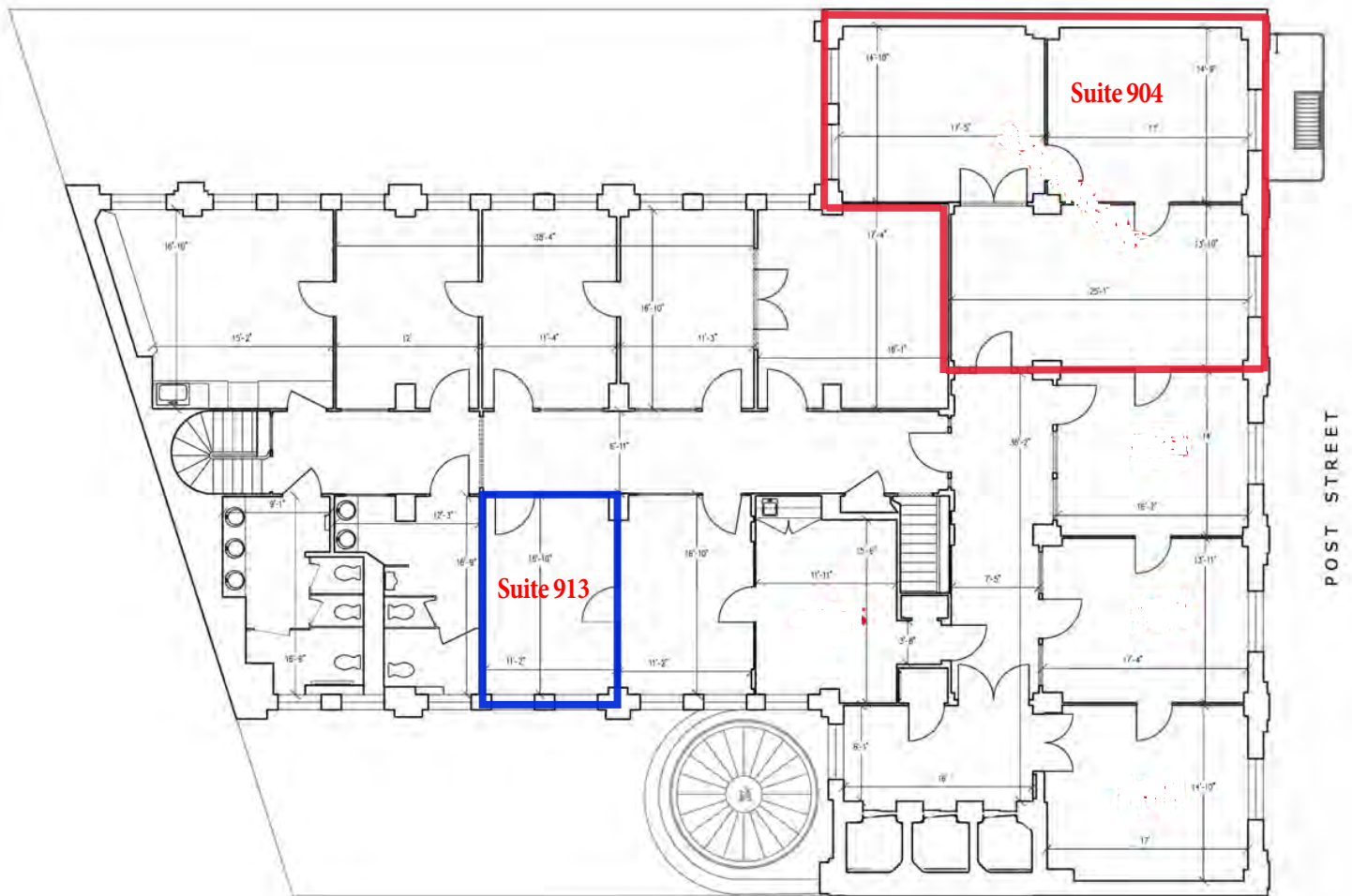
Suite 815



Suite 904



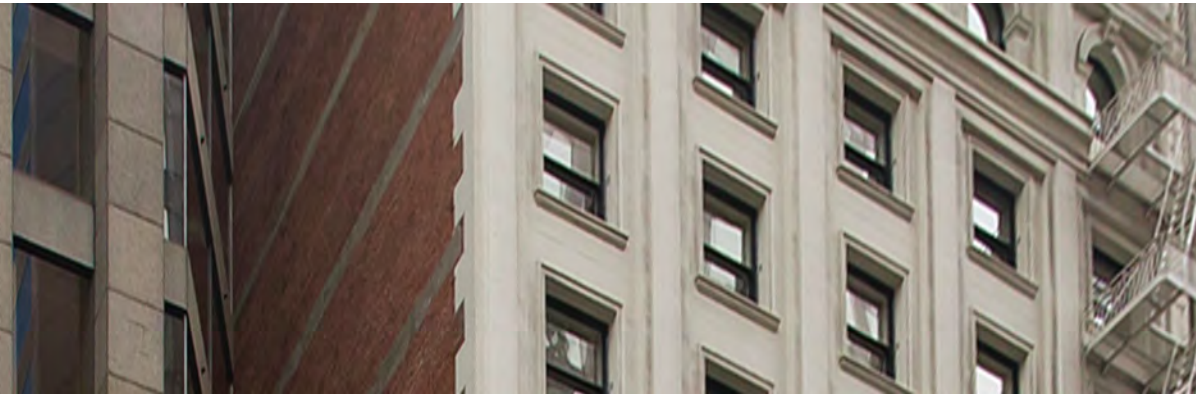
NINETH FLOOR PLAN:



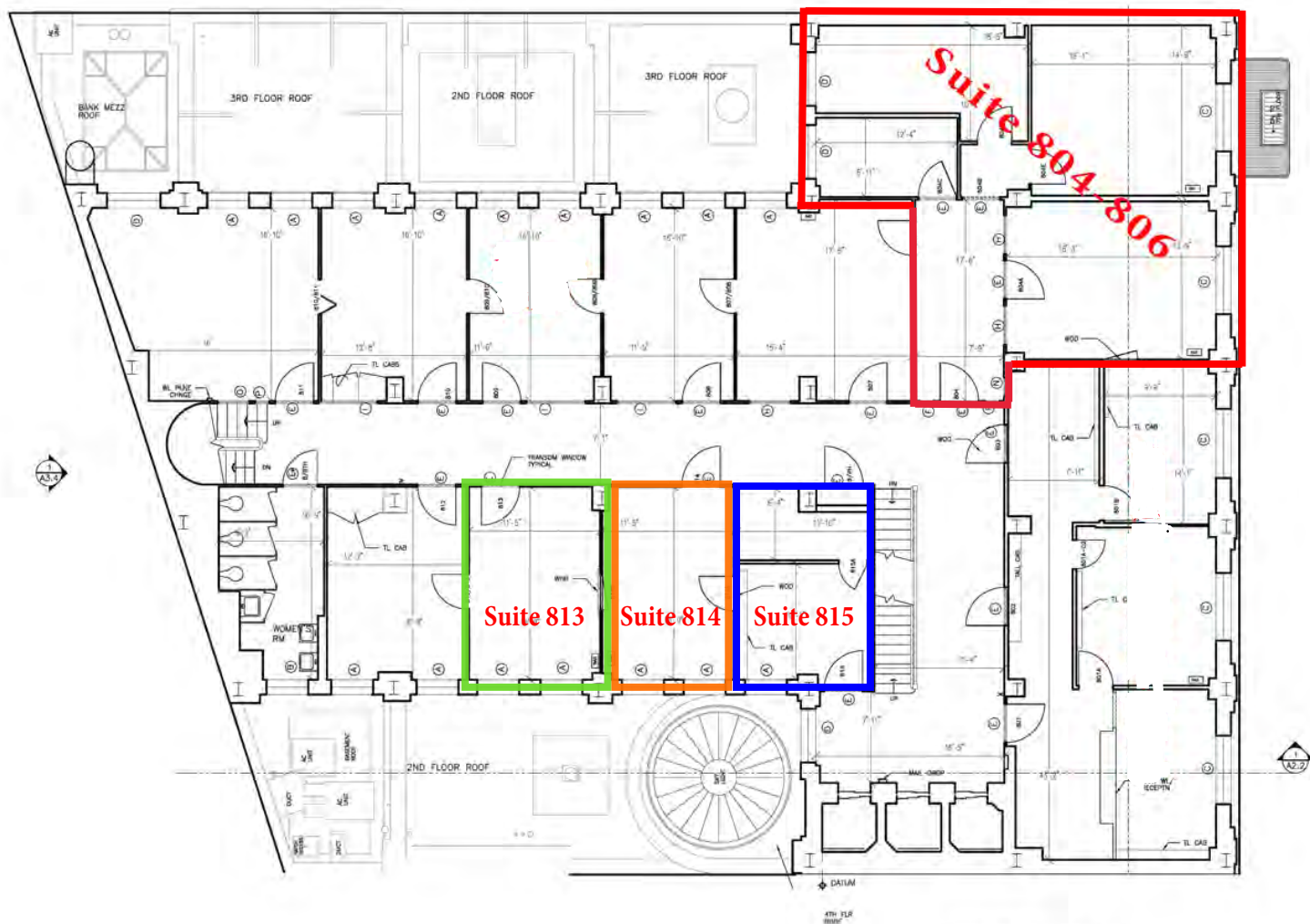
SUITE 904



The foregoing is based upon information provided by others which we believe is accurate, however, no guarantee, warranty or representation is made. We recommend that all interested parties independently verify its accuracy and completeness. As well, any projections, assumptions, opinions, or estimates are used for example only and do not represent the current or future performance of the identified property. Your tax, financial, legal and toxic substance advisors should conduct a careful independent investigation of the property and its suitability for your needs, including land use limitations. The property is subject to prior lease, sale, change in price, or withdrawal from the market without notice.



EIGHTH FLOOR PLAN:



SUITE 804/806



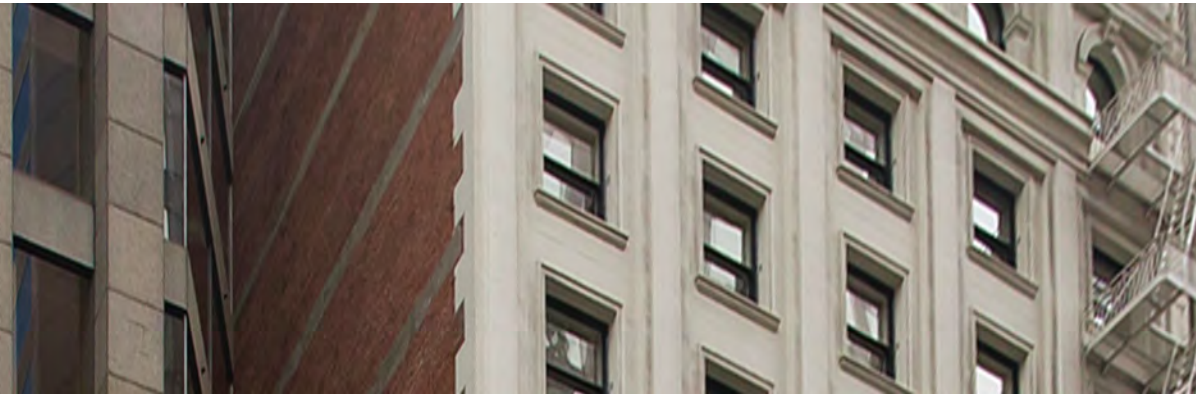
SUITE 813



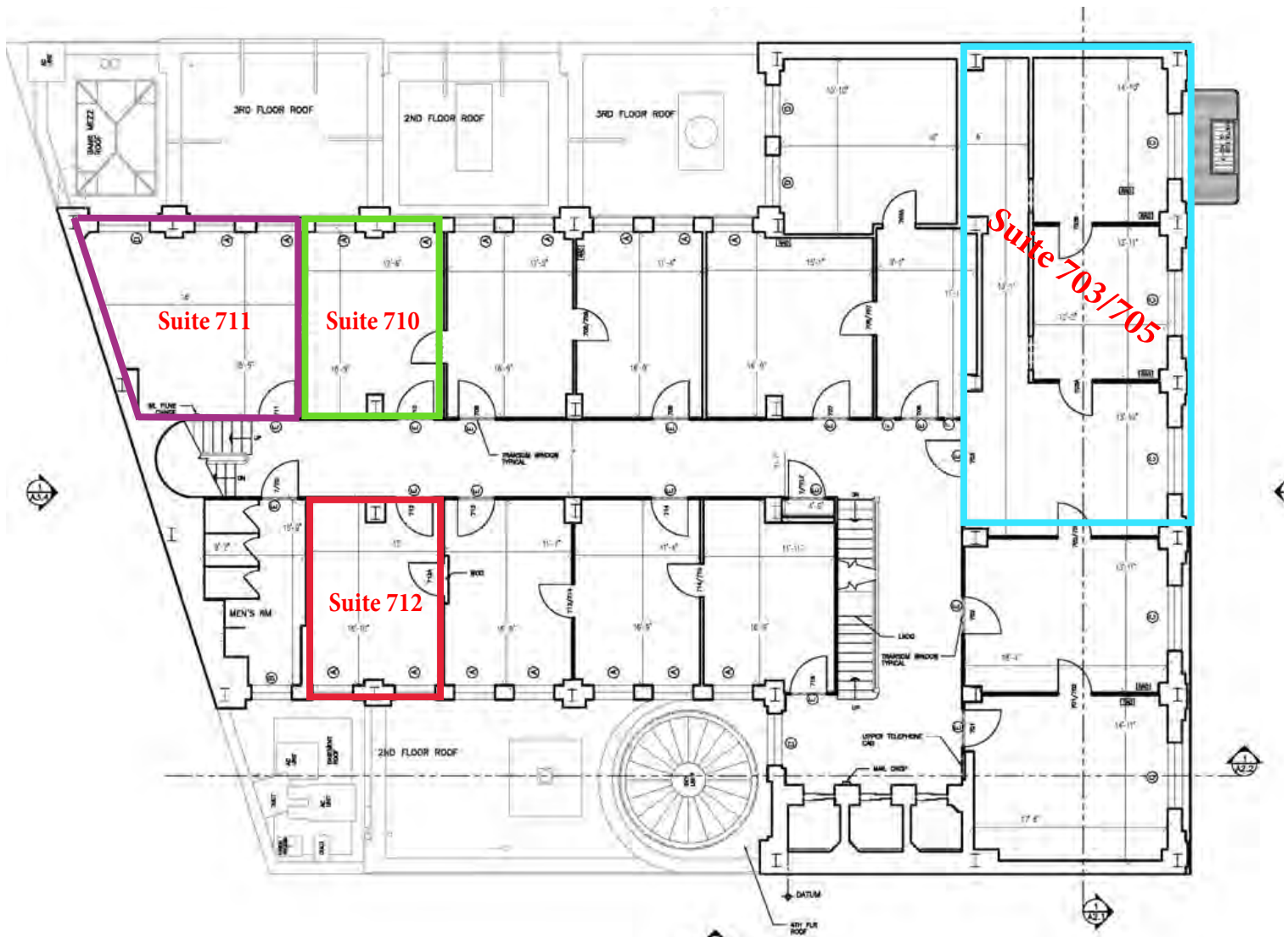
SUITE 814



The foregoing is based upon information provided by others which we believe is accurate, however, no guarantee, warranty or representation is made. We recommend that all interested parties independently verify its accuracy and completeness. As well, any projections, assumptions, opinions, or estimates are used for example only and do not represent the current or future performance of the identified property. Your tax, financial, legal and toxic substance advisors should conduct a careful independent investigation of the property and its suitability for your needs, including land use limitations. The property is subject to prior lease, sale, change in price, or withdrawal from the market without notice.



SEVENTH FLOOR PLAN:



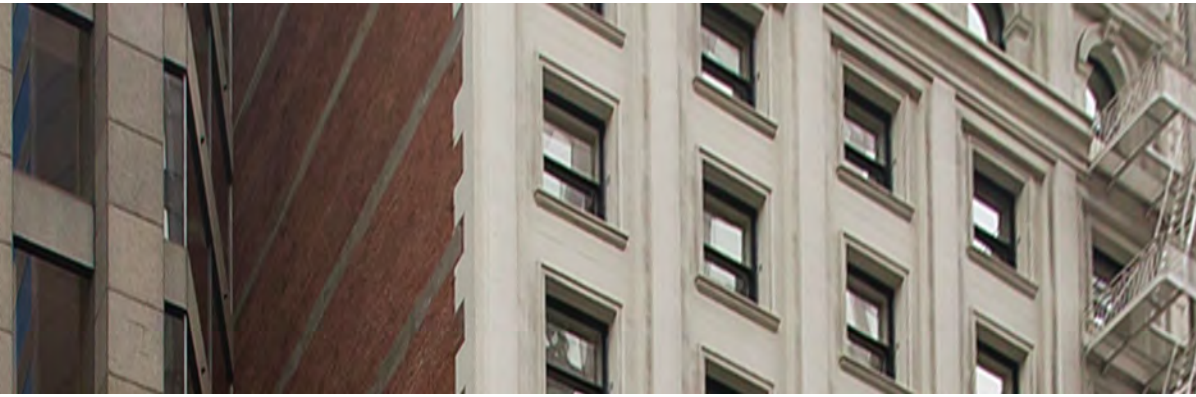
SUITE 710/711



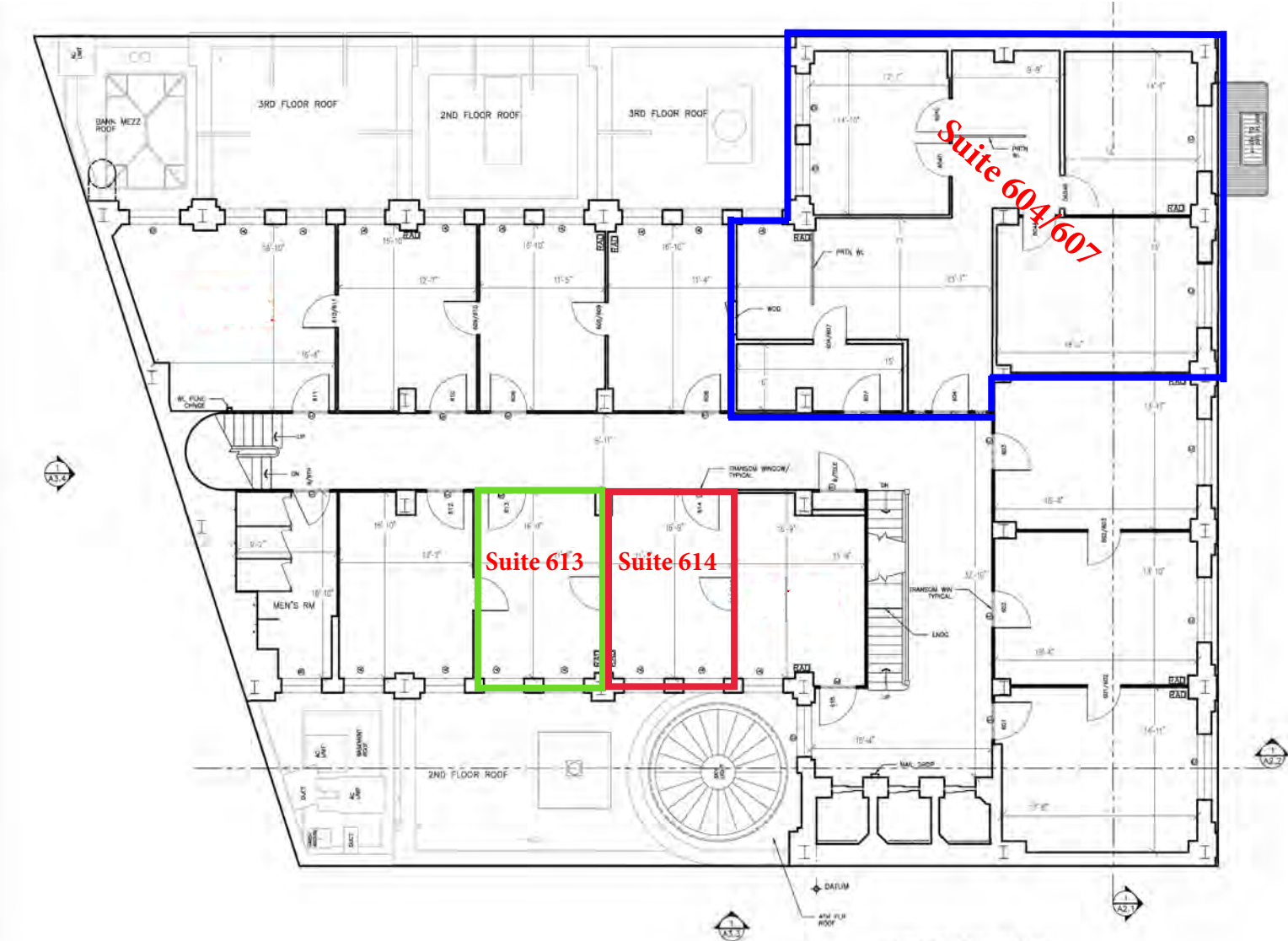
SUITE 703/705



The foregoing is based upon information provided by others which we believe is accurate, however, no guarantee, warranty or representation is made. We recommend that all interested parties independently verify its accuracy and completeness. As well, any projections, assumptions, opinions, or estimates are used for example only and do not represent the current or future performance of the identified property. Your tax, financial, legal and toxic substance advisors should conduct a careful independent investigation of the property and its suitability for your needs, including land use limitations. The property is subject to prior lease, sale, change in price, or withdrawal from the market without notice.



SIXTH FLOOR PLAN:



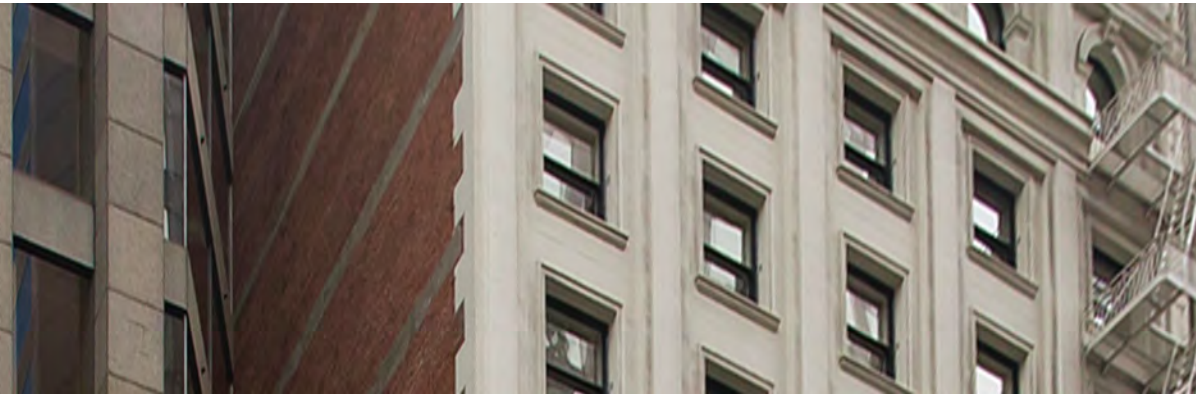
SUITE 604/607



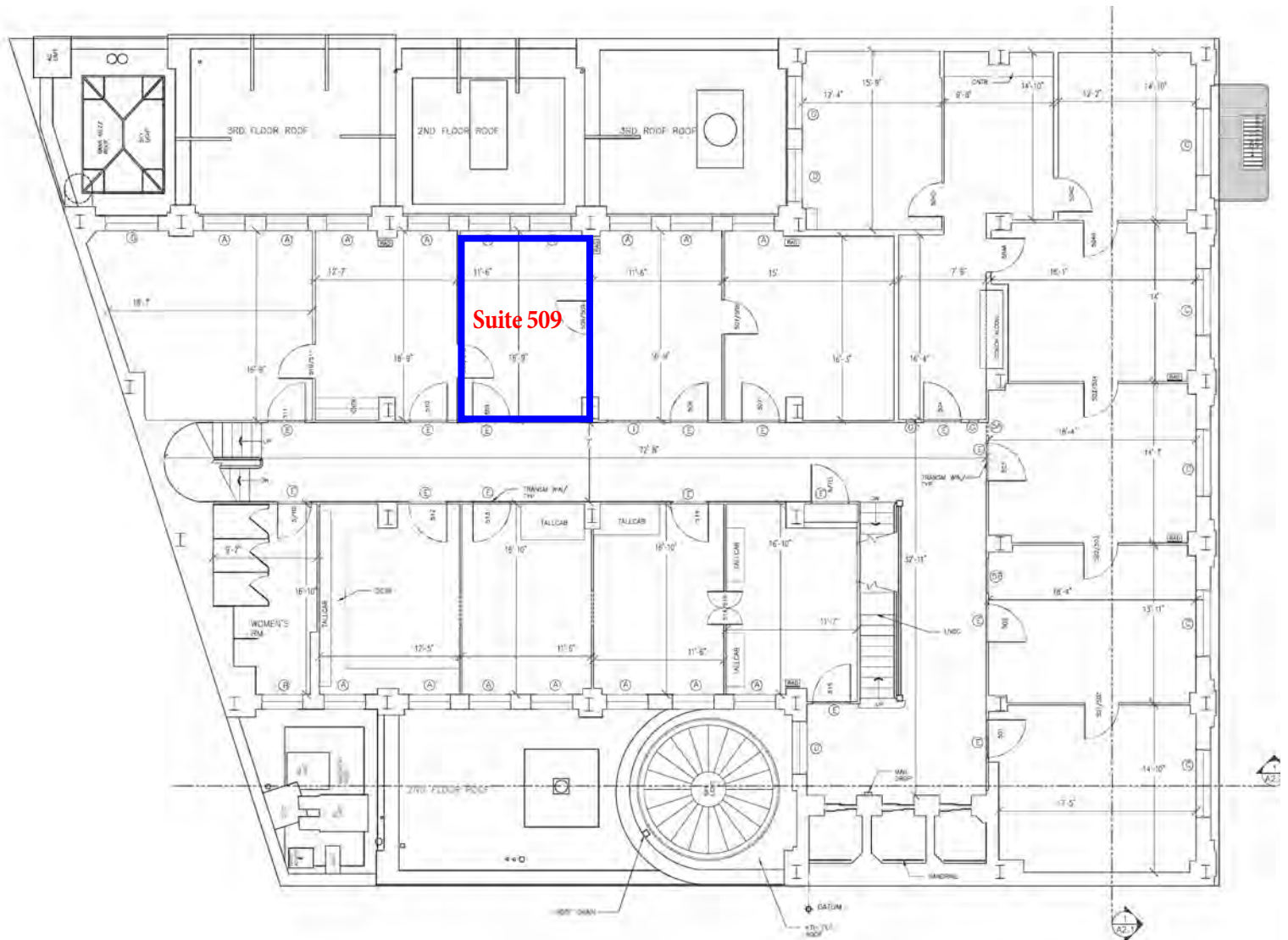
VIRTUAL TOUR



The foregoing is based upon information provided by others which we believe is accurate, however, no guarantee, warranty or representation is made. We recommend that all interested parties independently verify its accuracy and completeness. As well, any projections, assumptions, opinions, or estimates are used for example only and do not represent the current or future performance of the identified property. Your tax, financial, legal and toxic substance advisors should conduct a careful independent investigation of the property and its suitability for your needs, including land use limitations. The property is subject to prior lease, sale, change in price, or withdrawal from the market without notice.



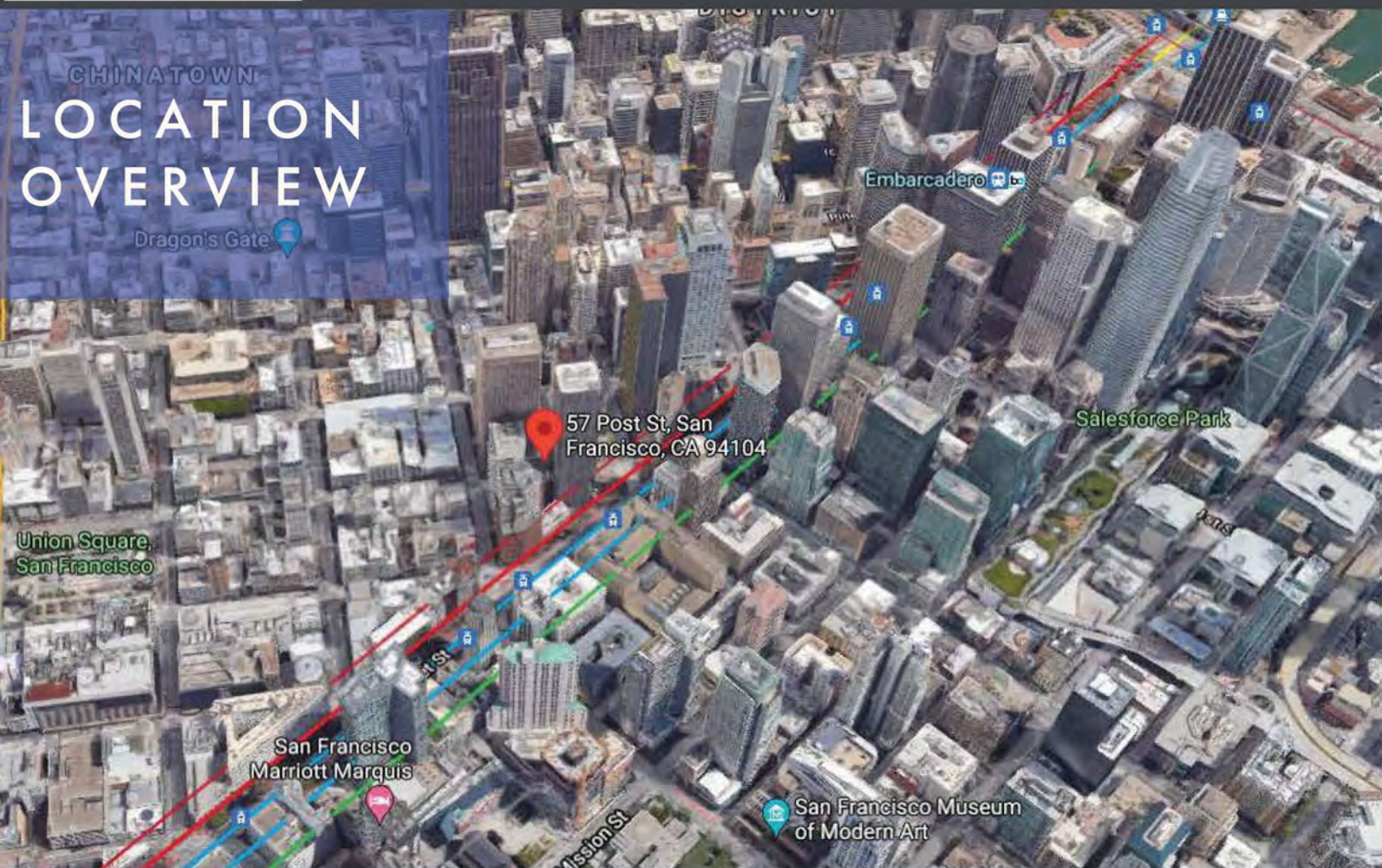
FIFTH FLOOR PLAN:



57 POST

CHINATOWN LOCATION OVERVIEW

Dragon's Gate



Walking score 99



Parking Garages Nearby



1/2 Block to
Montgomery BART



Cafes & Restaurants Nearby



24/7 Access

Bryan B. Colton

(415) 595-6959

bryancolton@coltoncommercialsf.com

License #: 02111407

Bradley L. Colton

(415) 515-2333

bcolton@coltoncommercialsf.com

License #: 00805116

Tori DeCoite

(415) 730-1117

tdecoite@coltoncommercialsf.com

License #: 02042753



530 Bush Street, Suite 800,
San Francisco, CA 94108
P: 415.834.1600 • F: 415.834.1601 •
www.coltoncommercialsf.com

57
POST

