

MEDICAL / OFFICE SPACE FOR LEASE

98 - 128 N Park Drive, Fayetteville, GA 30214

For more information please contact:

Brent Randolph Cell: 770.318.6815

Michael Johnson Cell: 404.663.3728



Property Profile

- +/- 448 SF to +/- 1,535 SF of Medical/Office Space in Professional Office Park
- Zoned C-2
- Convenient to I-85
- In close proximity to Retail & Restaurants
- Parking: 4 per 1,000
- Lease Rate: \$14.00/SF NNN
- Approximately 4.1 miles to Fayette Piedmont Hospital
- Suites under renovation
- City: Fayetteville
- County: Fayette

COMMERCIAL REAL ESTATE | DEVELOPMENT | CONSTRUCTION | PROPERTY MANAGEMENT

 770-632-4000

 RWCRE.net



ACBR
ATLANTA COMMERCIAL
BOARD OF REALTORS



Randolph
Williams

MEDICAL / OFFICE SPACE FOR LEASE

98 - 128 N Park Drive, Fayetteville, GA 30214

For more information please contact:
Brent Randolph Cell: 770.318.6815
Michael Johnson Cell: 404.663.3728

Aerial



COMMERCIAL REAL ESTATE | DEVELOPMENT | CONSTRUCTION | PROPERTY MANAGEMENT

770-632-4000

RWCRE.net



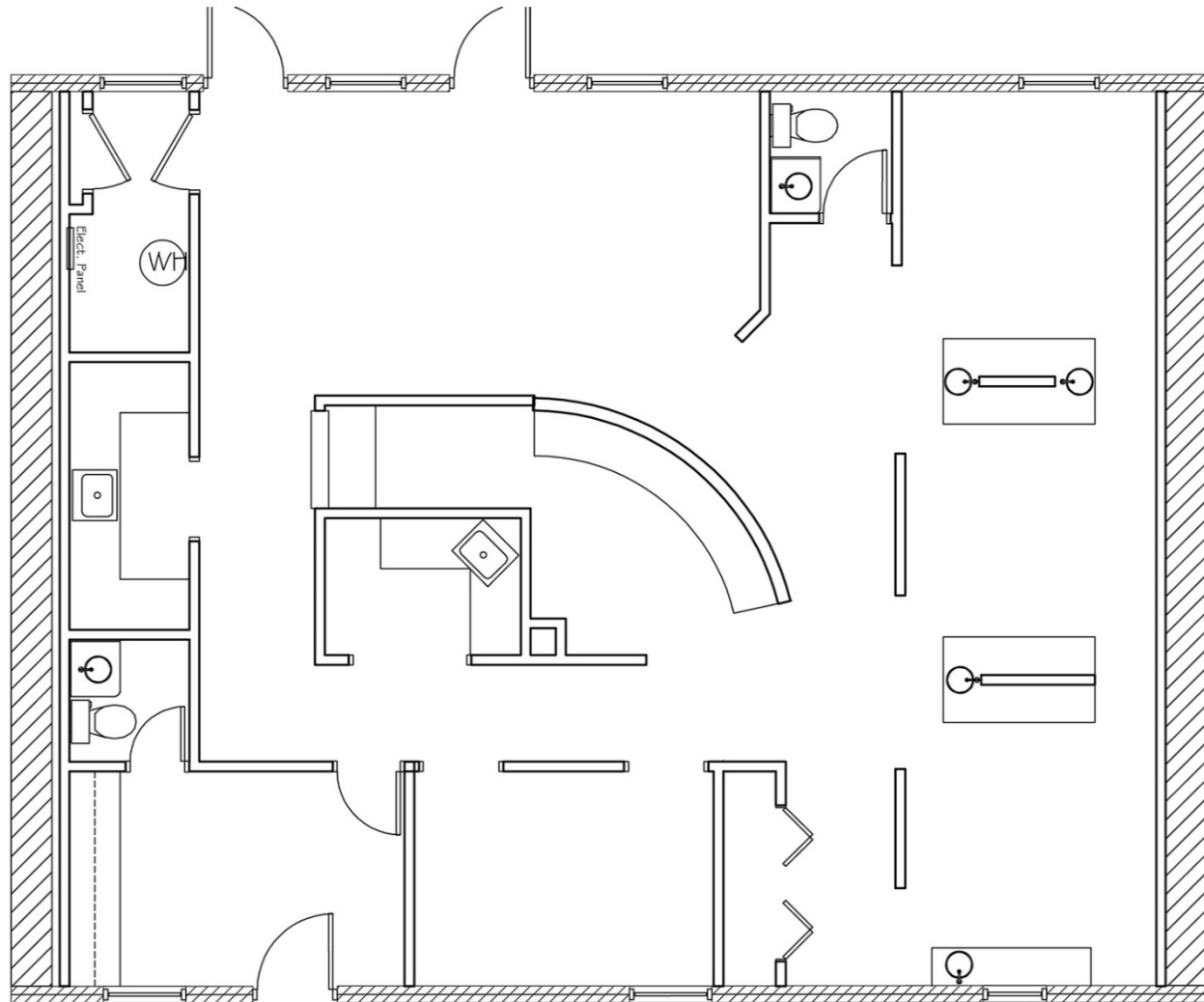
ACBR
ATLANTA COMMERCIAL
BOARD OF REALTORS



Randolph
Williams

This information has been obtained from sources believed reliable. While we do not doubt its accuracy we have not verified it and make no guarantee, warranty or representation about it.

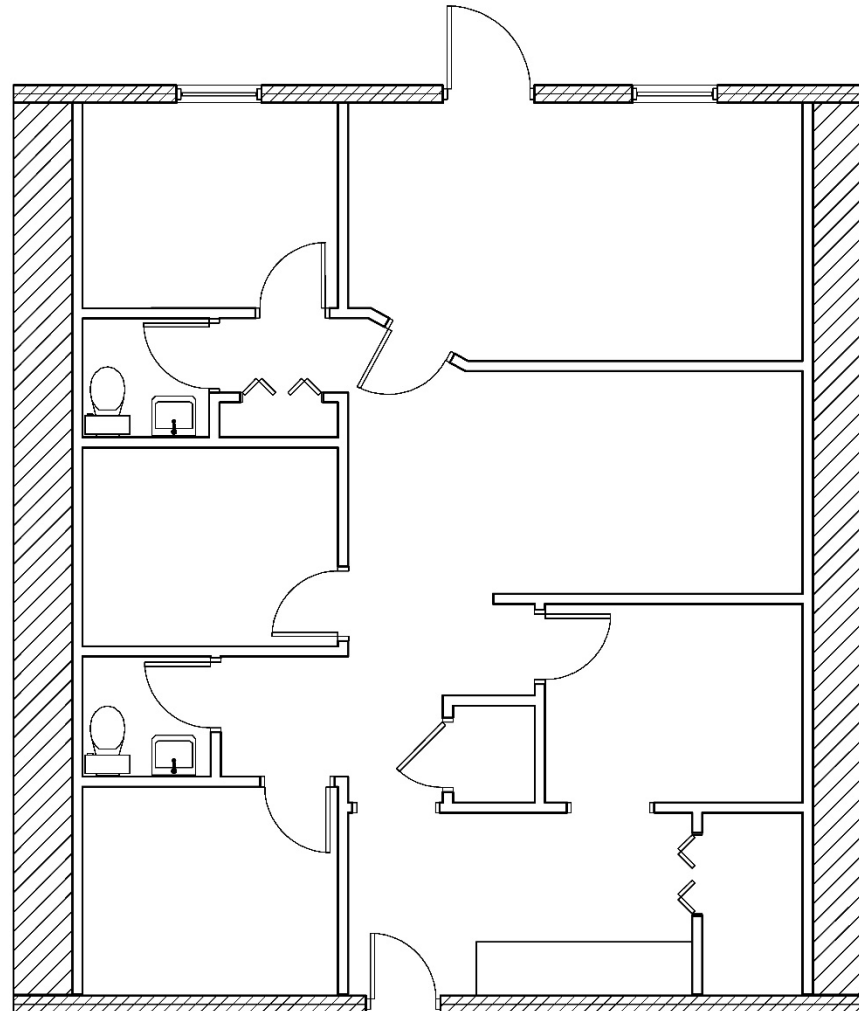
Suite 112 Available: +/- 1,535 Usable Square Feet



Suite 112

1,535 Usable Sq Ft.

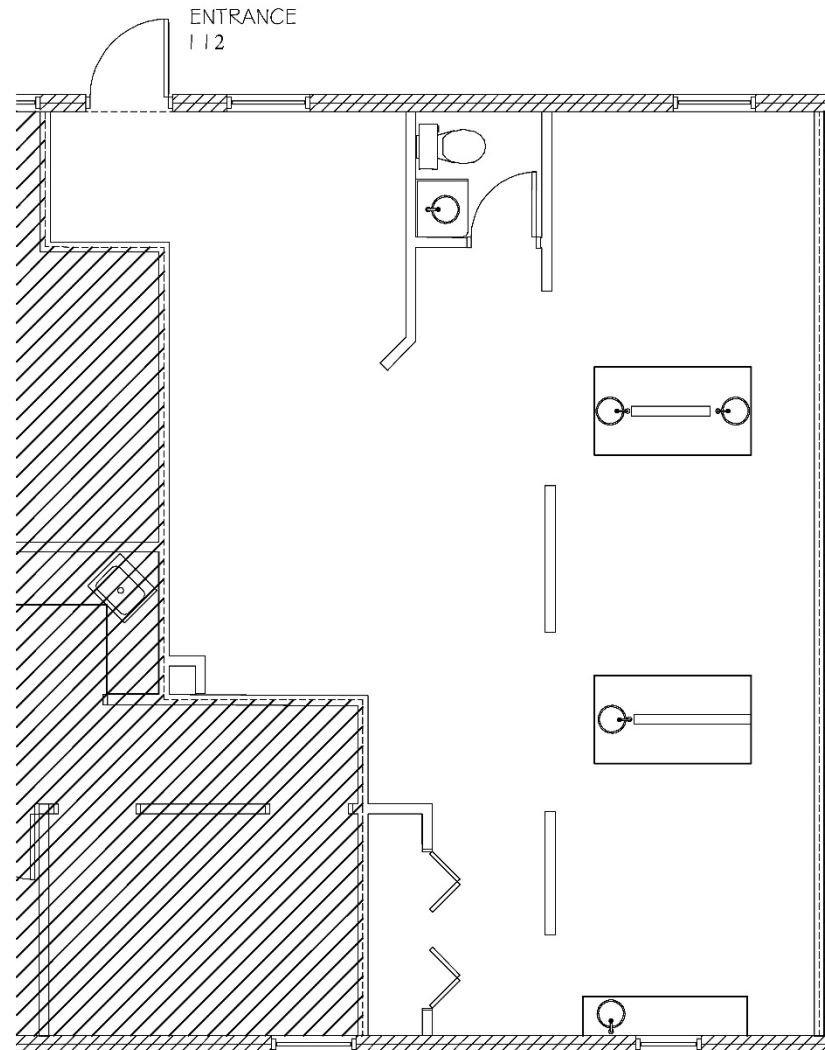
Suite 120 Available: +/- 448 Usable Square Feet



Suite 120

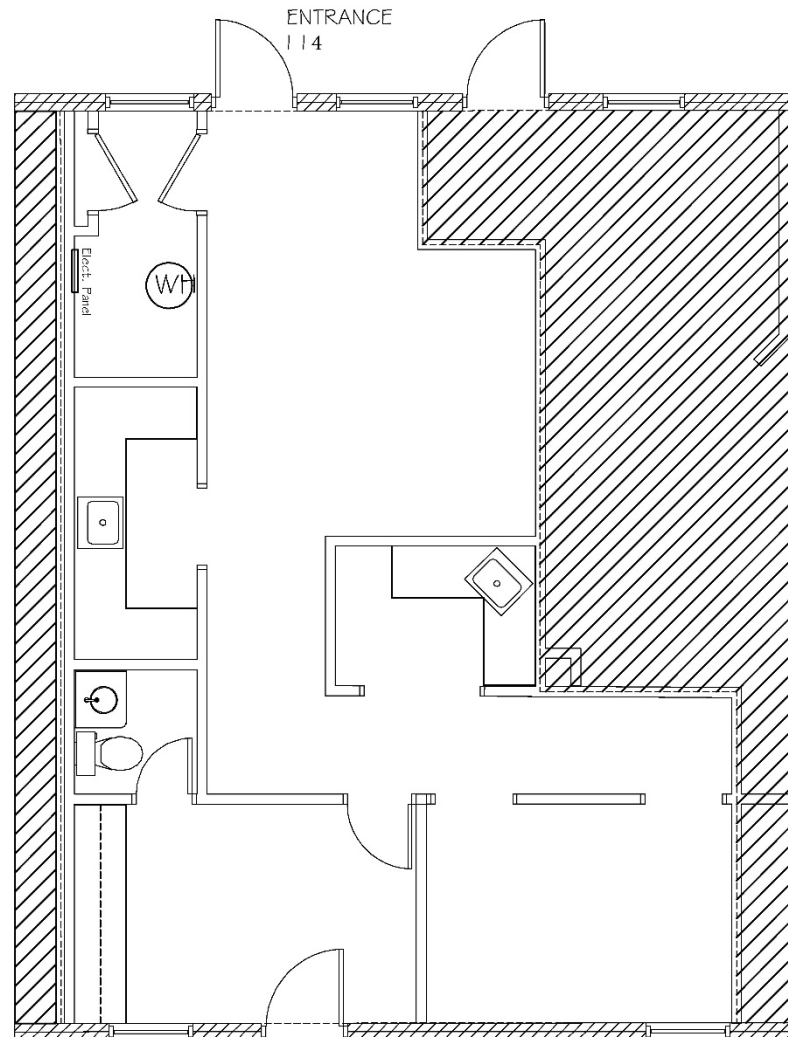
448 Usable Sq Ft.

***PROPOSED* Suite 112 Available: +/- 814 Usable Square Feet**



Suite 112
814 Usable Sq Ft.

***PROPOSED* Suite 114 Available: +/- 731 Usable Square Feet**



Suite 114

731 Usable Sq Ft.