

# For Sublease

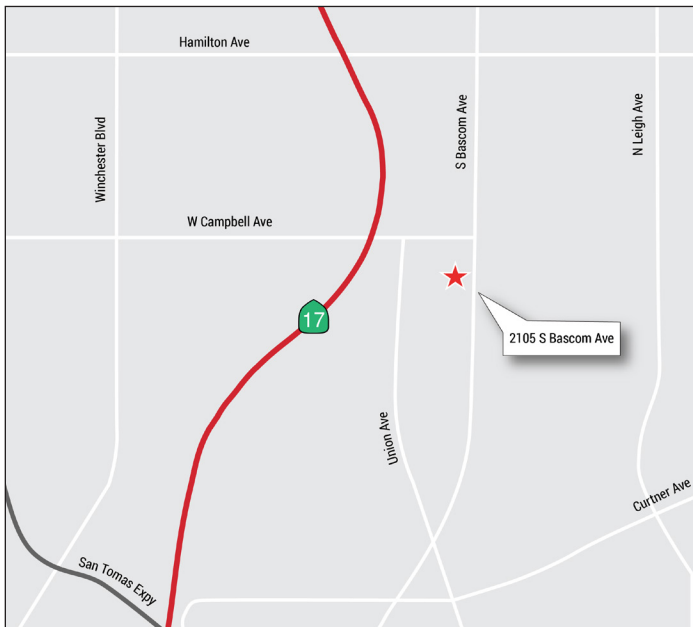
2105 S. Bascom Ave., Suite 285

Campbell, CA



## Property Size: ±2,075 SF

As exclusive agent(s), we are pleased to offer the following space:



- ◆ LED: 1/31/2023
- ◆ Plug & Play
- ◆ Access to Highways 17, 85, 280 & 880
- ◆ Large Glassline
- ◆ Common Conference Room
- ◆ Courtyard with Fountain & Seating Areas
- ◆ 4/1,000 Parking Ratio
- ◆ Walking Distance to Restaurants, Lodging & Retail Amenities in the Pruneyard
- ◆ Quick Drive to Downtown Campbell & Hamilton Light Rail Stations

**Gabe Regalado** 408.455.4913 [gabe.regalado@ngkf.com](mailto:gabe.regalado@ngkf.com) CA RE License #02008286

**Luke Allard** 408.982.8492 [lallard@ngkf.com](mailto:lallard@ngkf.com) CA RE License #01910058

**Omied Bagheri** 408.913.6905 [Omied.Bagheri@avisonyoung.com](mailto:Omied.Bagheri@avisonyoung.com) CA RE License #01929412



3055 Olin Avenue, Suite 2200, San Jose, CA 95128

[www.ngkf.com](http://www.ngkf.com)

The distributor of this communication is performing acts for which a real estate license is required. The information contained herein has been obtained from sources deemed reliable but has not been verified and no guarantee, warranty or representation, either express or implied, is made with respect to such information. Terms of sale or lease and availability are subject to change or withdrawal without notice.

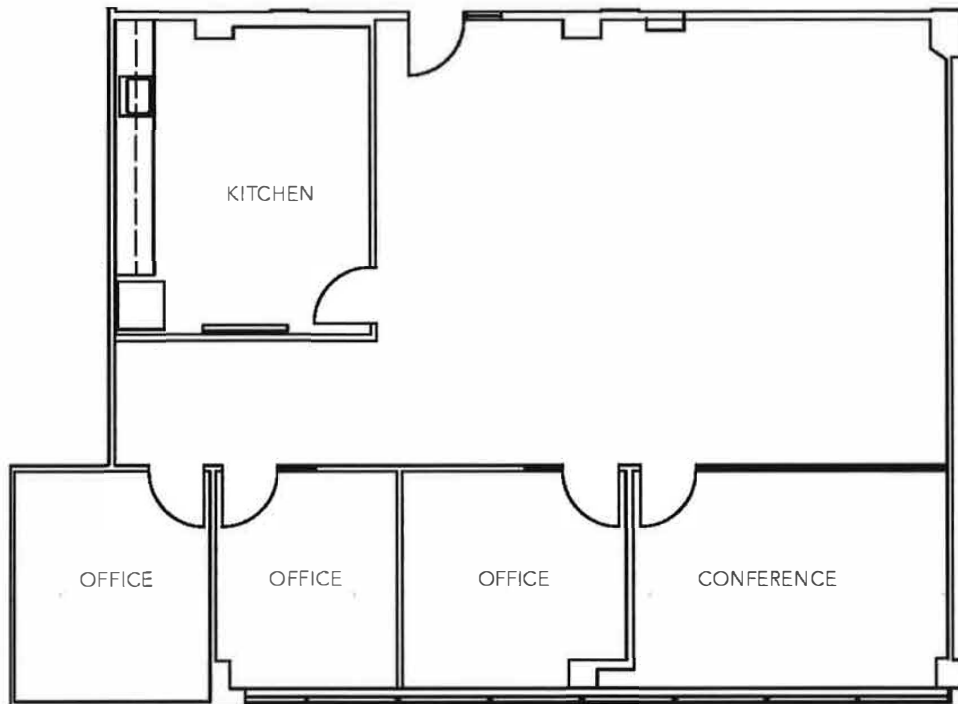
19-1166 • 02/20

# For Sublease

2105 S. Bascom Ave., Suite 285

Campbell, CA

## Floor Plan



**Gabe Regalado** 408.455.4913 [gabe.regalado@ngkf.com](mailto:gabe.regalado@ngkf.com) CA RE License #02008286

**Luke Allard** 408.982.8492 [lallard@ngkf.com](mailto:lallard@ngkf.com) CA RE License #01910058

**Omied Bagheri** 408.913.6905 [Omied.Bagheri@avisonyoung.com](mailto:Omied.Bagheri@avisonyoung.com) CA RE License #01929412



**Newmark  
Knight Frank**

3055 Olin Avenue, Suite 2200, San Jose, CA 95128

[www.ngkf.com](http://www.ngkf.com)

# For Sublease

2105 S. Bascom Ave., Suite 285

Campbell, CA

## Photos



**Gabe Regalado** 408.455.4913 [gabe.regalado@ngkf.com](mailto:gabe.regalado@ngkf.com) CA RE License #02008286

**Luke Allard** 408.982.8492 [lallard@ngkf.com](mailto:lallard@ngkf.com) CA RE License #01910058

**Omid Bagheri** 408.913.6905 [Omid.Bagheri@avisonyoung.com](mailto:Omid.Bagheri@avisonyoung.com) CA RE License #01929412



3055 Olin Avenue, Suite 2200, San Jose, CA 95128

[www.ngkf.com](http://www.ngkf.com)

The distributor of this communication is performing acts for which a real estate license is required. The information contained herein has been obtained from sources deemed reliable but has not been verified and no guarantee, warranty or representation, either express or implied, is made with respect to such information. Terms of sale or lease and availability are subject to change or withdrawal without notice.

19-1166 • 02/20