

# AVAILABLE FOR LEASE

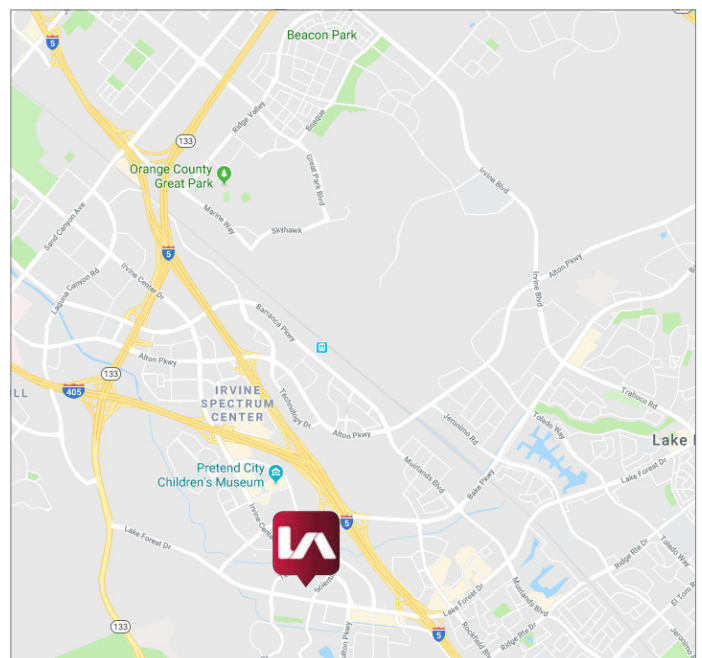
FAITH-MAXWELL BUSINESS PARK  
20 MAXWELL | IRVINE, CA 92618



## LISTING DATA

- ±2,285 SF of Office Area
- Part of a ±5,369 SF Industrial R&D Building
- Large Reception
- Large Break Room
- 5 Private Offices
- Large Open Area
- Corner Unit
- Fully Sprinklered
- Excellent Access to the 5 & 405 Freeways via Bake Pkwy, Lake Forest Dr & Irvine Center Dr

For more information, contact: **TED ROMMEL**  
Senior Vice President  
CalDRE: 00830845  
(949) 790-3117  
trommel@leeirvine.com

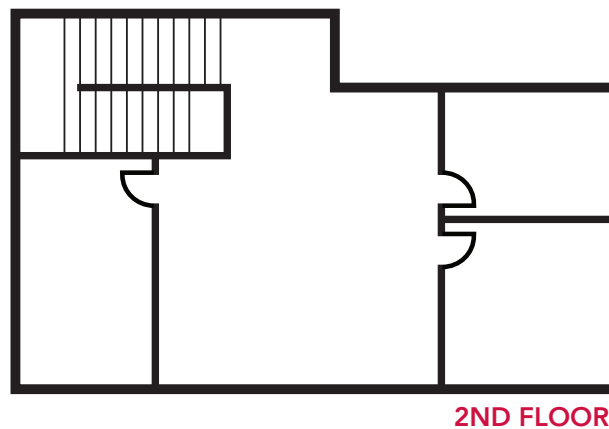
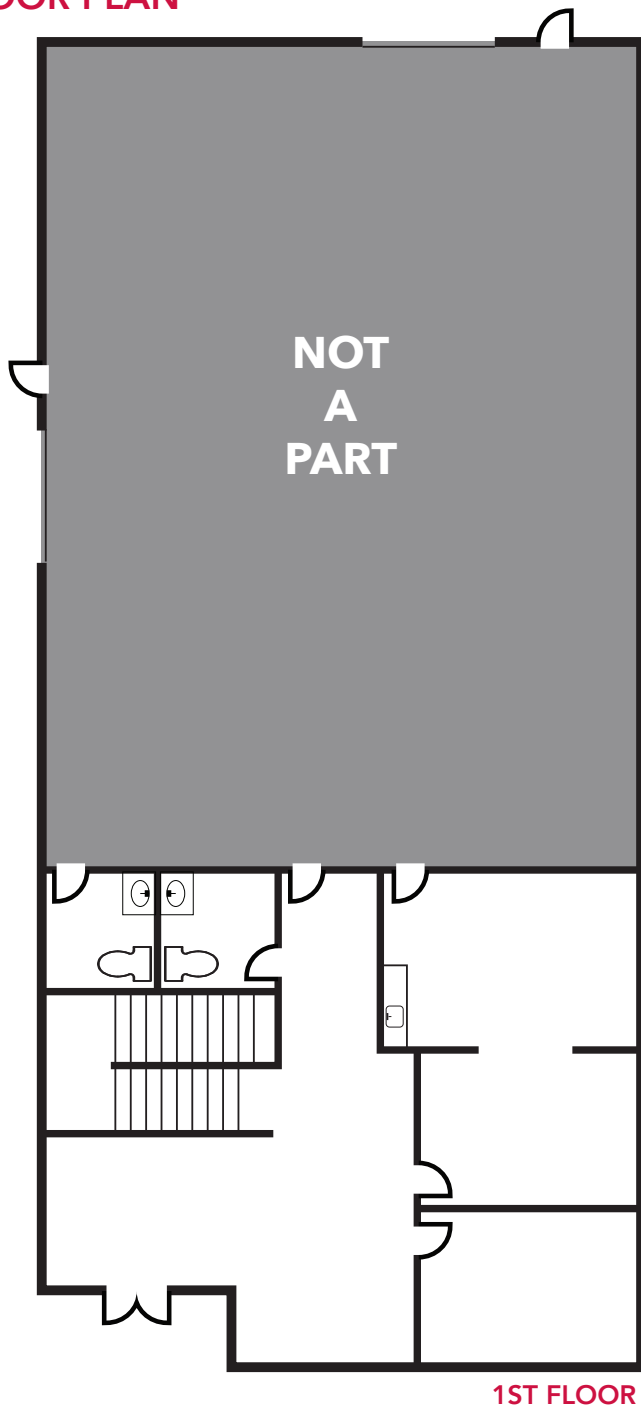


All information furnished regarding property for sale, rental or financing is from sources deemed reliable, but no warranty or representation is made to the accuracy thereof and same is submitted to errors, omissions, change of price, rental or other conditions prior to sale, lease or financing or withdrawal without notice. No liability of any kind is to be imposed on the broker herein.

# AVAILABLE FOR LEASE

FAITH-MAXWELL BUSINESS PARK  
20 MAXWELL | IRVINE, CA 92618

## FLOOR PLAN



For more information, contact: **TED ROMMEL**  
Senior Vice President  
CalDRE: 00830845  
(949) 790-3117  
trommel@leeirvine.com

All information furnished regarding property for sale, rental or financing is from sources deemed reliable, but no warranty or representation is made to the accuracy thereof and same is submitted to errors, omissions, change of price, rental or other conditions prior to sale, lease or financing or withdrawal without notice. No liability of any kind is to be imposed on the broker herein.