



# CENTERPOINTE

---

## AT LAGUNA

Freeway Frontage  
Land Also Available (±6.3 AC)

**CENTERPOINT**  
AT LAGUNA





# CENTERPOINTE

AT LAGUNA

2230-2236 Longport Court, Elk Grove, CA

FOR LEASE					
	ADDRESS	SUITE	SF	Condition	Lease Rate
1	2228 Longport Court	Suite 130	±1,856	Move-In Ready (30 Days)	\$1.95 MG
2	2234 Longport Court	Suite 130	±2,418	Move-In Ready	\$1.95 MG
3	2234 Longport Court	Suite 100	±5,099	Shell	\$1.95 MG
4	2236 Longport Court	Suite 110	±5,474	Shell	\$1.95 MG



Tyler Boyd  
916.751.3625  
tyler.boyd@kidder.com  
LIC # 001927167

Kevin Sheehan  
916.751.3601  
kevin.sheehan@kidder.com  
LIC #00936093

[kiddermathews.com](http://kiddermathews.com)



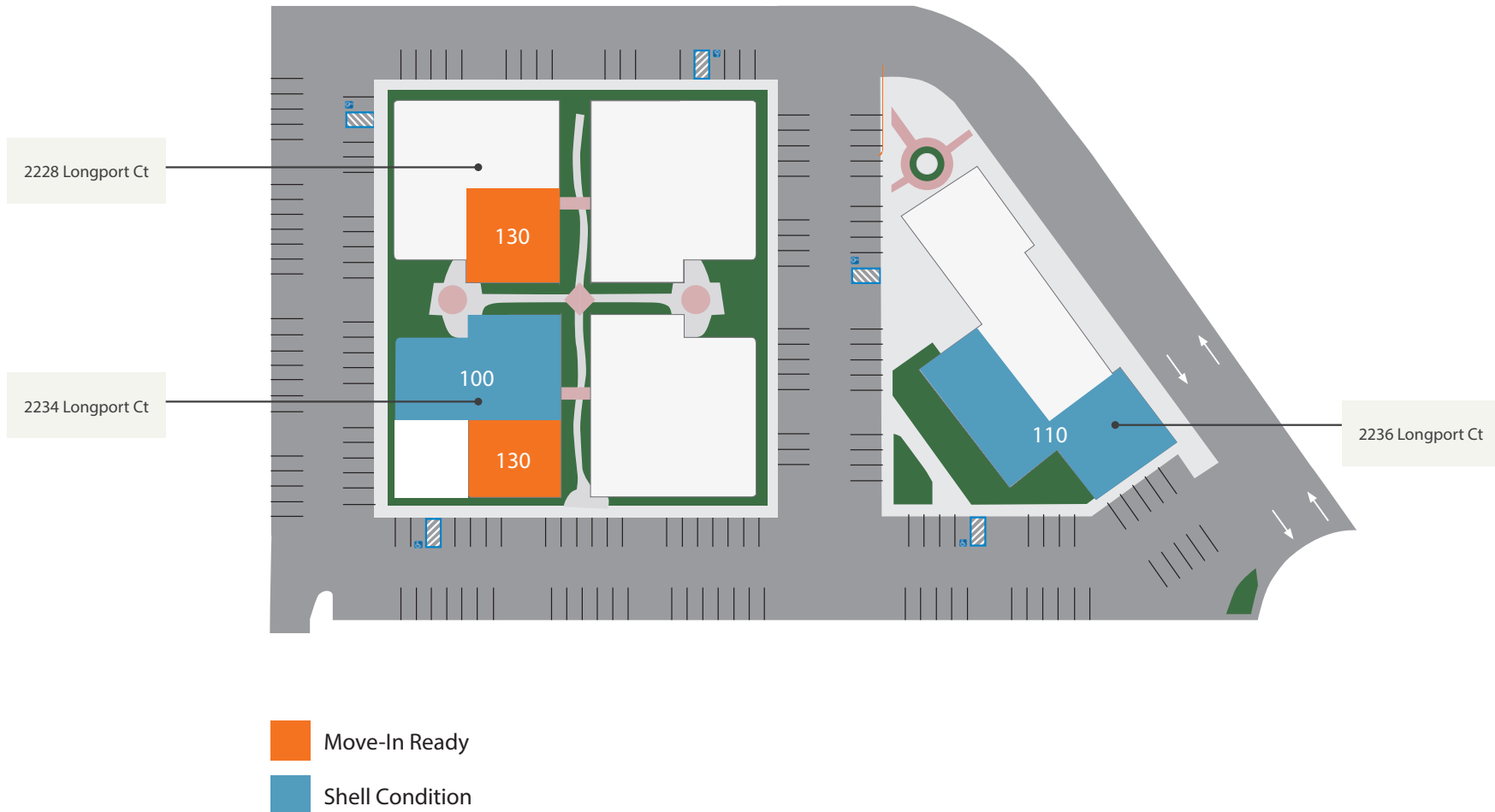
This information supplied herein is from sources we deem reliable. It is provided without any representation, warranty or guarantee, expressed or implied as to its accuracy. Prospective Buyer or Tenant should conduct an independent investigation and verification of all matters deemed to be material, including, but not limited to, statements of income and expenses. Consult your attorney, accountant, or other professional advisor.

# CENTERPOINTE

AT LAGUNA

2230-2236 Longport Court, Elk Grove, CA

## Site Plan



Tyler Boyd  
916.751.3625  
tyler.boyd@kidder.com  
LIC # 001927167

Kevin Sheehan  
916.751.3601  
kevin.sheehan@kidder.com  
LIC #00936093

[kiddermathews.com](http://kiddermathews.com)



This information supplied herein is from sources we deem reliable. It is provided without any representation, warranty or guarantee, expressed or implied as to its accuracy. Prospective Buyer or Tenant should conduct an independent investigation and verification of all matters deemed to be material, including, but not limited to, statements of income and expenses. Consult your attorney, accountant, or other professional advisor.



# CENTERPOINTE

AT LAGUNA

2230-2236 Longport Court, Elk Grove, CA



Tyler Boyd  
916.751.3625  
tyler.boyd@kidder.com  
LIC # 001927167

Kevin Sheehan  
916.751.3601  
kevin.sheehan@kidder.com  
LIC #00936093

[kiddermathews.com](http://kiddermathews.com)



This information supplied herein is from sources we deem reliable. It is provided without any representation, warranty or guarantee, expressed or implied as to its accuracy. Prospective Buyer or Tenant should conduct an independent investigation and verification of all matters deemed to be material, including, but not limited to, statements of income and expenses. Consult your attorney, accountant, or other professional advisor.

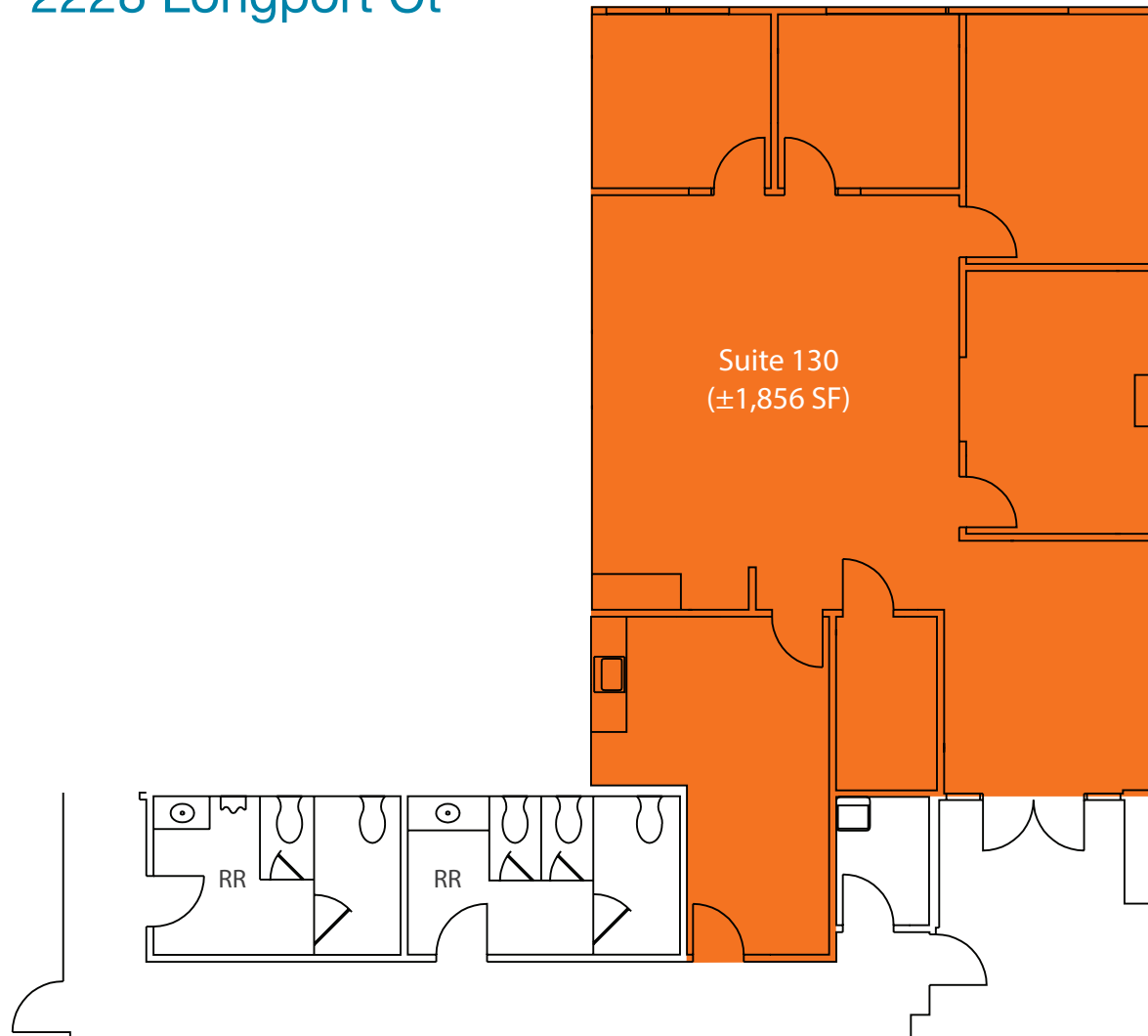


CENTERPOINTE

AT LAGUNA

2230-2236 Longport Court, Elk Grove, CA

## Floor Plan - 2228 Longport Ct



Tyler Boyd  
916.751.3625  
tyler.boyd@kidder.com  
LIC # 001927167

Kevin Sheehan  
916.751.3601  
kevin.sheehan@kidder.com  
LIC #00936093

[kiddermathews.com](http://kiddermathews.com)



This information supplied herein is from sources we deem reliable. It is provided without any representation, warranty or guarantee, expressed or implied as to its accuracy. Prospective Buyer or Tenant should conduct an independent investigation and verification of all matters deemed to be material, including, but not limited to, statements of income and expenses. Consult your attorney, accountant, or other professional advisor.

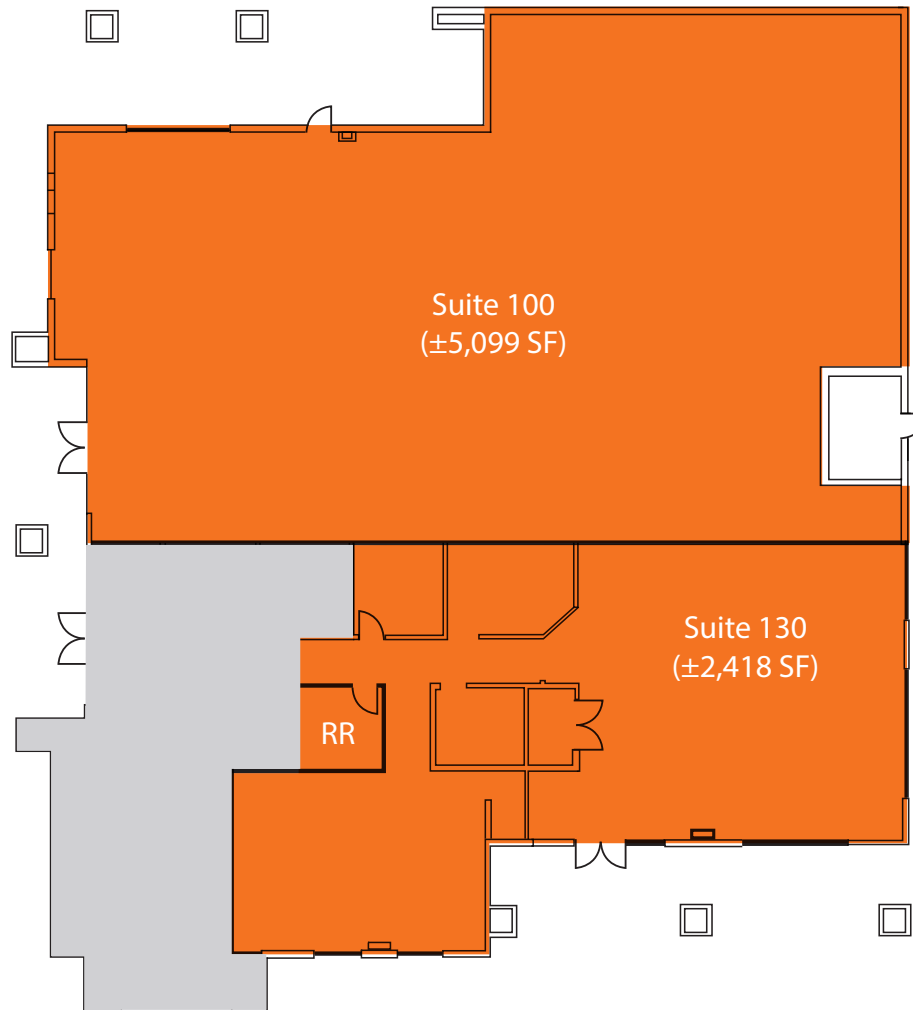


CENTERPOINTE

AT LAGUNA

2230-2236 Longport Court, Elk Grove, CA

## Floor Plan - 2234 Longport Ct



Tyler Boyd  
916.751.3625  
tyler.boyd@kidder.com  
LIC # 001927167

Kevin Sheehan  
916.751.3601  
kevin.sheehan@kidder.com  
LIC #00936093

[kiddermathews.com](http://kiddermathews.com)



This information supplied herein is from sources we deem reliable. It is provided without any representation, warranty or guarantee, expressed or implied as to its accuracy. Prospective Buyer or Tenant should conduct an independent investigation and verification of all matters deemed to be material, including, but not limited to, statements of income and expenses. Consult your attorney, accountant, or other professional advisor.

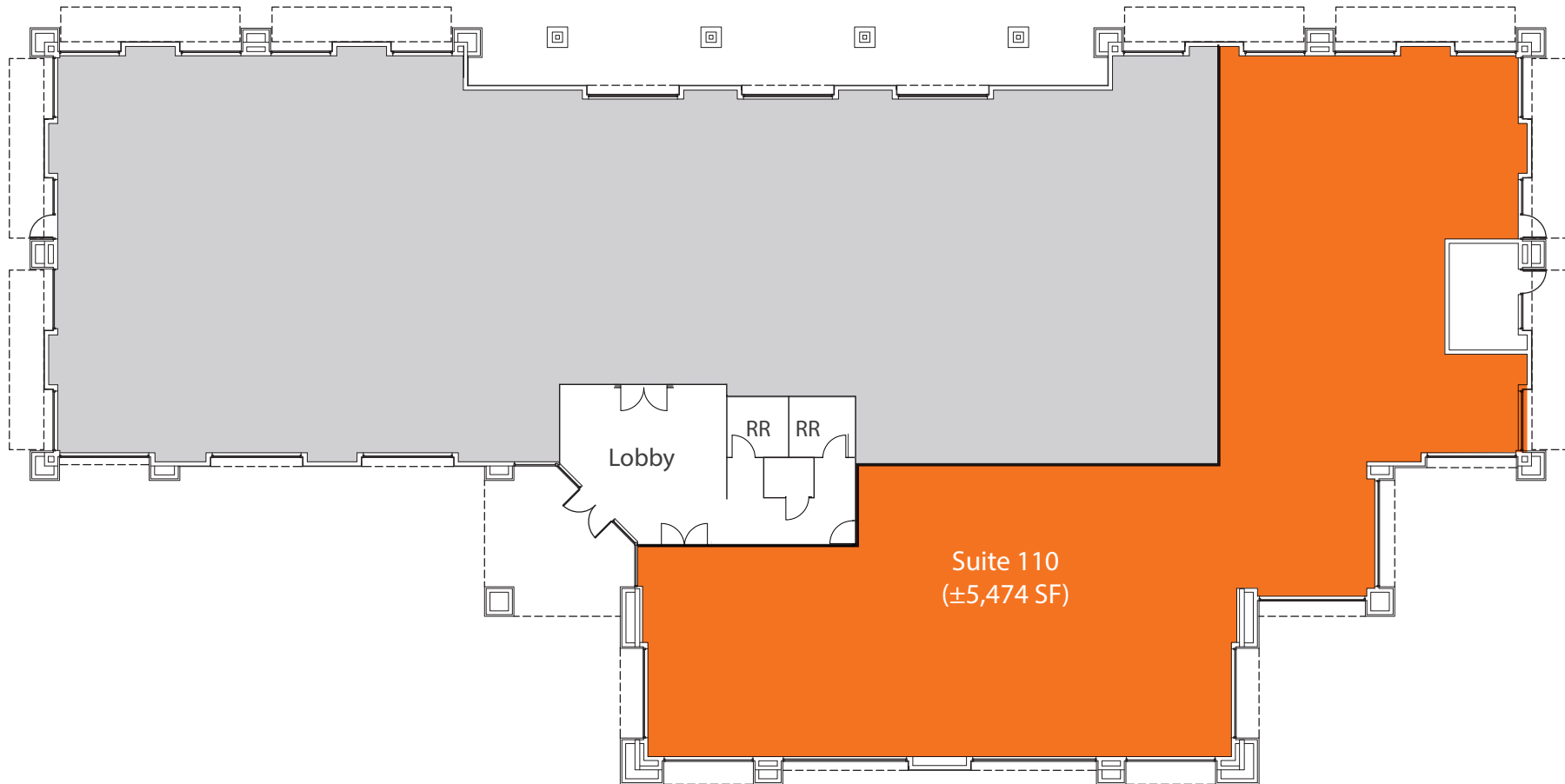


CENTERPOINTE

AT LAGUNA

2230-2236 Longport Court, Elk Grove, CA

## Floor Plan - 2236 Longport Ct



Tyler Boyd  
916.751.3625  
tyler.boyd@kidder.com  
LIC # 001927167

Kevin Sheehan  
916.751.3601  
kevin.sheehan@kidder.com  
LIC #00936093

[kiddermathews.com](http://kiddermathews.com)



This information supplied herein is from sources we deem reliable. It is provided without any representation, warranty or guarantee, expressed or implied as to its accuracy. Prospective Buyer or Tenant should conduct an independent investigation and verification of all matters deemed to be material, including, but not limited to, statements of income and expenses. Consult your attorney, accountant, or other professional advisor.



# CENTERPOINTE

AT LAGUNA

## Features

Office/Medical/Retail space for lease

Move-In suites available for immediate occupancy

Customizable shell units available with Tenant Improvement Allowance offered

Built in 2007 on ±4.6 acres

General Commercial (GC) zoning allows office, medical, recreation/fitness, assembly, educational, retail, and many other uses

Parking ratio of 4.0 per 1,000 SF

Immediate access to I-5 and Laguna Blvd

±6.3 AC I-5 Freeway Frontage Land also available

Under new ownership and  
property management!

2230-2236 Longport Court, Elk Grove, CA



Tyler Boyd  
916.751.3625  
tyler.boyd@kidder.com  
LIC # 001927167

Kevin Sheehan  
916.751.3601  
kevin.sheehan@kidder.com  
LIC #00936093

[kiddermathews.com](http://kiddermathews.com)



This information supplied herein is from sources we deem reliable. It is provided without any representation, warranty or guarantee, expressed or implied as to its accuracy. Prospective Buyer or Tenant should conduct an independent investigation and verification of all matters deemed to be material, including, but not limited to, statements of income and expenses. Consult your attorney, accountant, or other professional advisor.



# CENTERPOINTE

AT LAGUNA

## Amenities

2230-2236 Longport Court, Elk Grove, CA



Tyler Boyd  
916.751.3625  
tyler.boyd@kidder.com  
LIC # 001927167

Kevin Sheehan  
916.751.3601  
kevin.sheehan@kidder.com  
LIC #00936093

[kiddermathews.com](http://kiddermathews.com)



This information supplied herein is from sources we deem reliable. It is provided without any representation, warranty or guarantee, expressed or implied as to its accuracy. Prospective Buyer or Tenant should conduct an independent investigation and verification of all matters deemed to be material, including, but not limited to, statements of income and expenses. Consult your attorney, accountant, or other professional advisor.

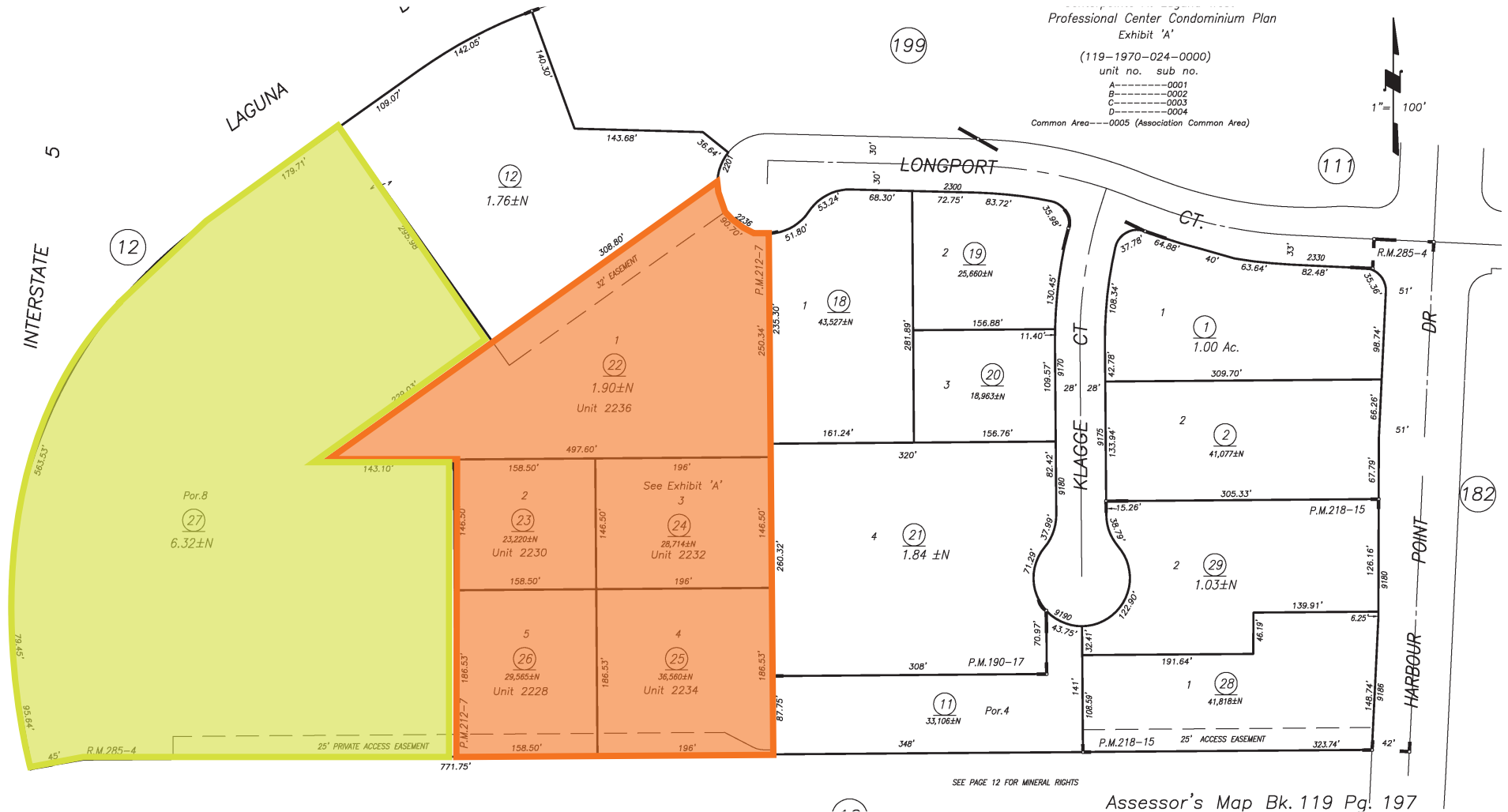


# CENTERPOINTE

AT LAGUNA

## Parcel Map

2230-2236 Longport Court, Elk Grove, CA



Tyler Boyd  
916.751.3625  
tyler.boyd@kidder.com  
LIC # 001927167

Kevin Sheehan  
916.751.3601  
kevin.sheehan@kidder.com  
LIC #00936093

kiddermathews.com



This information supplied herein is from sources we deem reliable. It is provided without any representation, warranty or guarantee, expressed or implied as to its accuracy. Prospective Buyer or Tenant should conduct an independent investigation and verification of all matters deemed to be material, including, but not limited to, statements of income and expenses. Consult your attorney, accountant, or other professional advisor.