



FOLSOM PARK PLAZA

FOR LEASE | 9261 FOLSOM BLVD, SACRAMENTO, CA
OFFICE, RETAIL, AND MEDICAL SPACES AND BUILDINGS

AMY DIEDRICH
916.751.3602
amy.diedrich@kidder.com
LIC N° 02033144

TYLER BOYD
916.751.3625
tyler.boyd@kidder.com
LIC N° 01927167

 **Kidder
Mathews**

FOR LEASE

Folsom Park Plaza

9261 FOLSOM BLVD, SACRAMENTO, CA



KIDDER.COM

This information supplied herein is from sources we deem reliable. It is provided without any representation, warranty, or guarantee, expressed or implied as to its accuracy. Prospective Buyer or Tenant should conduct an independent investigation and verification of all matters deemed to be material, including, but not limited to, statements of income and expenses. Consult your attorney, accountant, or other professional advisor.

km Kidder Mathews

FOR LEASE

Folsom Park Plaza

9261 FOLSOM BLVD, SACRAMENTO, CA

AVAILABILITIES

Address	SF For Lease	Condition	Lease Rate*
Building 100	±6,157	5 Private Offices, Conference Room, Kitchen/Break Room, Open Office w/42 Built-In Cubes, Reception/Waiting Room, Private Restrooms	\$1.30/SF
Building 200	±2,000 - ±6,211	Divisible to ±2,000 SF - Former Urgent Care Space with Medical Improvements; Can be Used as Traditional Office or Medical	\$1.30/SF
Building 400	±1,642	2 Private Offices, Reception/Waiting Room, Break Room, Room for 2-3 Cubicles, and Private Restroom	\$1.30/SF
Building 500	±696 - ±3,455	Divisible to as Low as 696 SF; Multiple Small Office Suites Available	\$1.30/SF
Building 600	±4,800	Building in Warm Shell Condition - Customize to Your Own Use; TI \$ Available	\$1.30/SF

* Lease rates are modified gross and Tenants are responsible for electricity and janitorial



KIDDER.COM

This information supplied herein is from sources we deem reliable. It is provided without any representation, warranty, or guarantee, expressed or implied as to its accuracy. Prospective Buyer or Tenant should conduct an independent investigation and verification of all matters deemed to be material, including, but not limited to, statements of income and expenses. Consult your attorney, accountant, or other professional advisor.

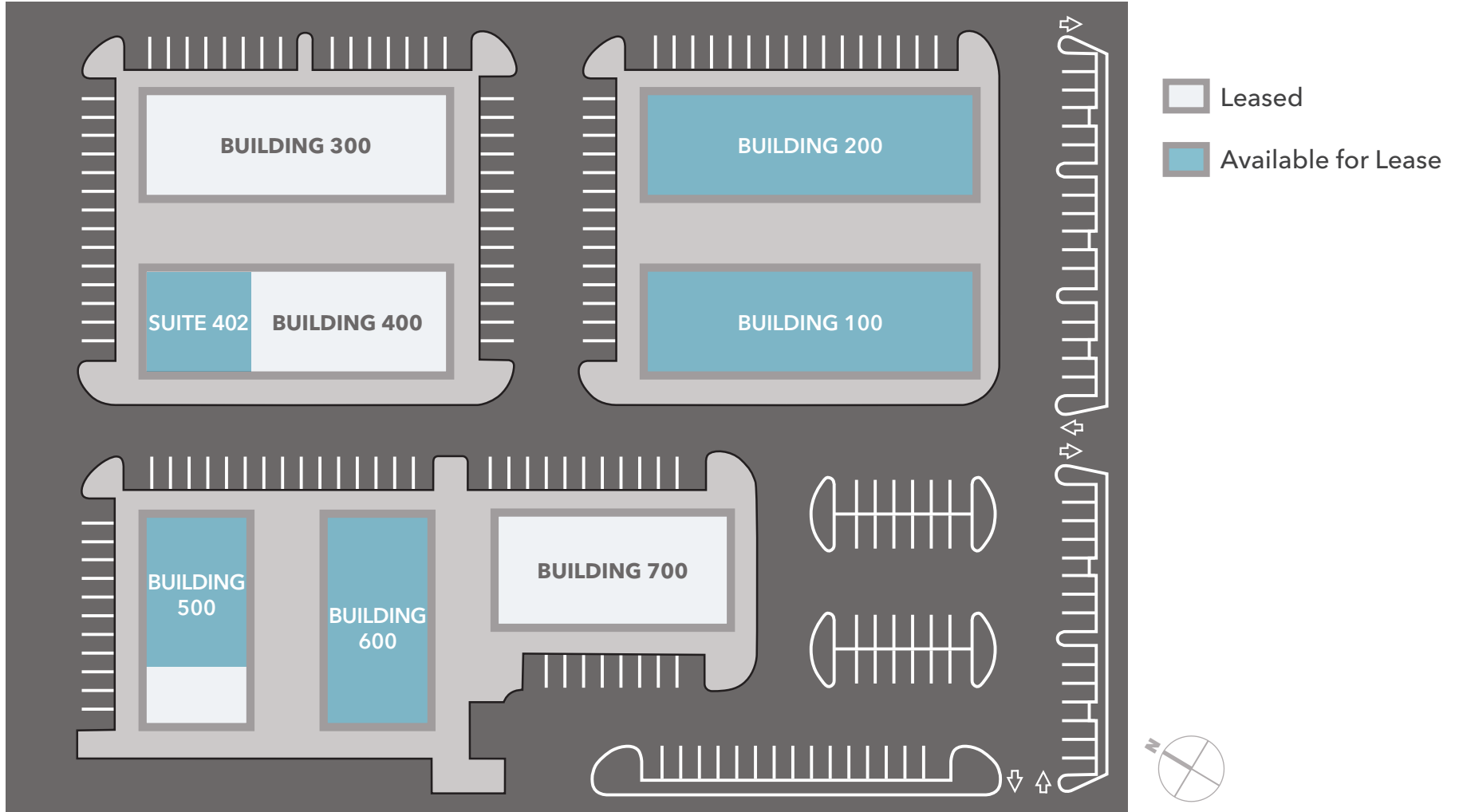
km Kidder
Mathews

FOR LEASE

Folsom Park Plaza

9261 FOLSOM BLVD, SACRAMENTO, CA

Site Plan



KIDDER.COM

This information supplied herein is from sources we deem reliable. It is provided without any representation, warranty, or guarantee, expressed or implied as to its accuracy. Prospective Buyer or Tenant should conduct an independent investigation and verification of all matters deemed to be material, including, but not limited to, statements of income and expenses. Consult your attorney, accountant, or other professional advisor.

km Kidder Mathews

FOR LEASE

Folsom Park Plaza

9261 FOLSOM BLVD, SACRAMENTO, CA

Interior Photos



KIDDER.COM

This information supplied herein is from sources we deem reliable. It is provided without any representation, warranty, or guarantee, expressed or implied as to its accuracy. Prospective Buyer or Tenant should conduct an independent investigation and verification of all matters deemed to be material, including, but not limited to, statements of income and expenses. Consult your attorney, accountant, or other professional advisor.

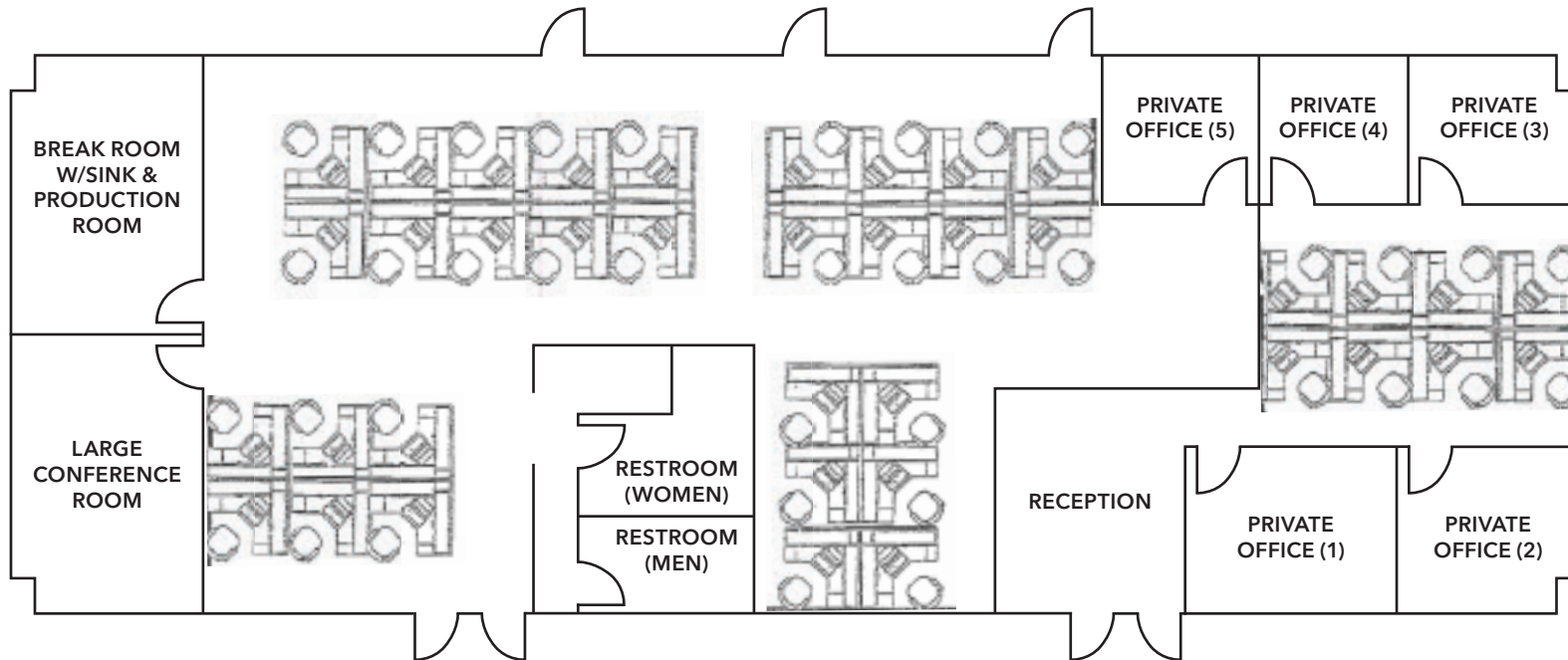
km Kidder Mathews

FOR LEASE

Folsom Park Plaza

9261 FOLSOM BLVD, SACRAMENTO, CA

Building 100



KIDDER.COM

This information supplied herein is from sources we deem reliable. It is provided without any representation, warranty, or guarantee, expressed or implied as to its accuracy. Prospective Buyer or Tenant should conduct an independent investigation and verification of all matters deemed to be material, including, but not limited to, statements of income and expenses. Consult your attorney, accountant, or other professional advisor.

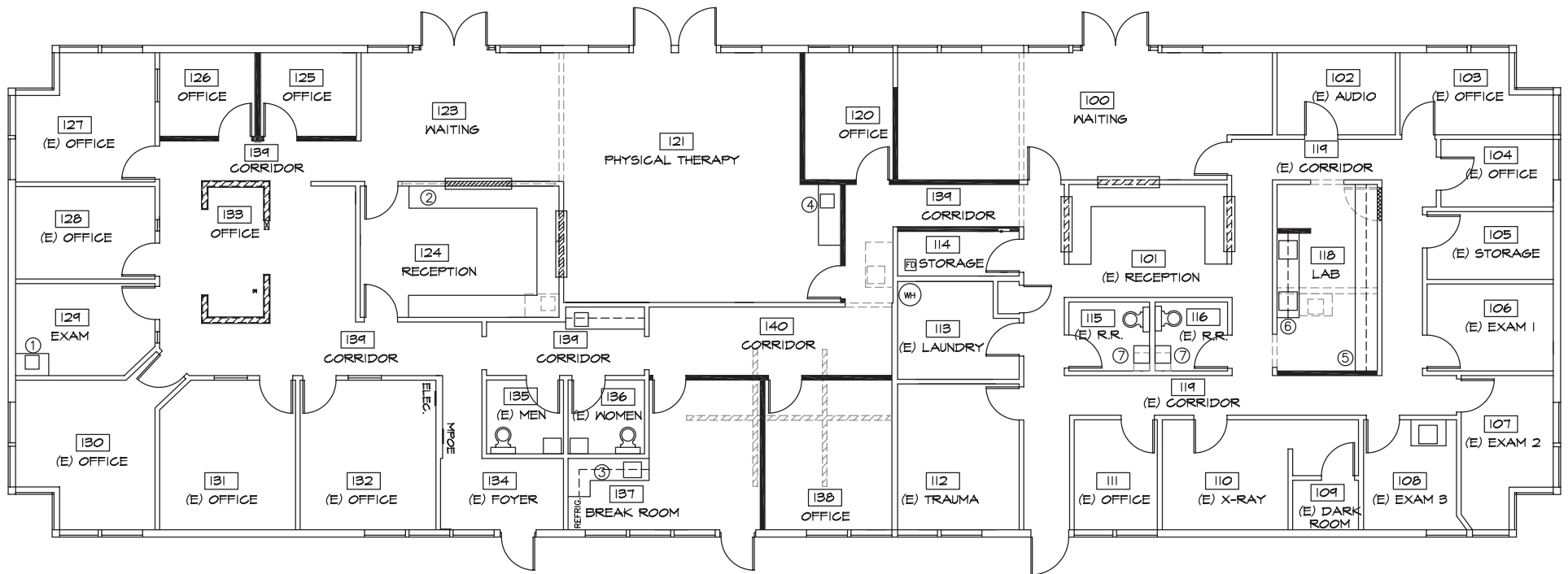


FOR LEASE

Folsom Park Plaza

9261 FOLSOM BLVD, SACRAMENTO, CA

Building 200 - Medical/Dental/Urgent Care



KIDDER.COM

This information supplied herein is from sources we deem reliable. It is provided without any representation, warranty, or guarantee, expressed or implied as to its accuracy. Prospective Buyer or Tenant should conduct an independent investigation and verification of all matters deemed to be material, including, but not limited to, statements of income and expenses. Consult your attorney, accountant, or other professional advisor.



FOR LEASE

Folsom Park Plaza

9261 FOLSOM BLVD, SACRAMENTO, CA

Building 400 - Suite 402



KIDDER.COM

This information supplied herein is from sources we deem reliable. It is provided without any representation, warranty, or guarantee, expressed or implied as to its accuracy. Prospective Buyer or Tenant should conduct an independent investigation and verification of all matters deemed to be material, including, but not limited to, statements of income and expenses. Consult your attorney, accountant, or other professional advisor.

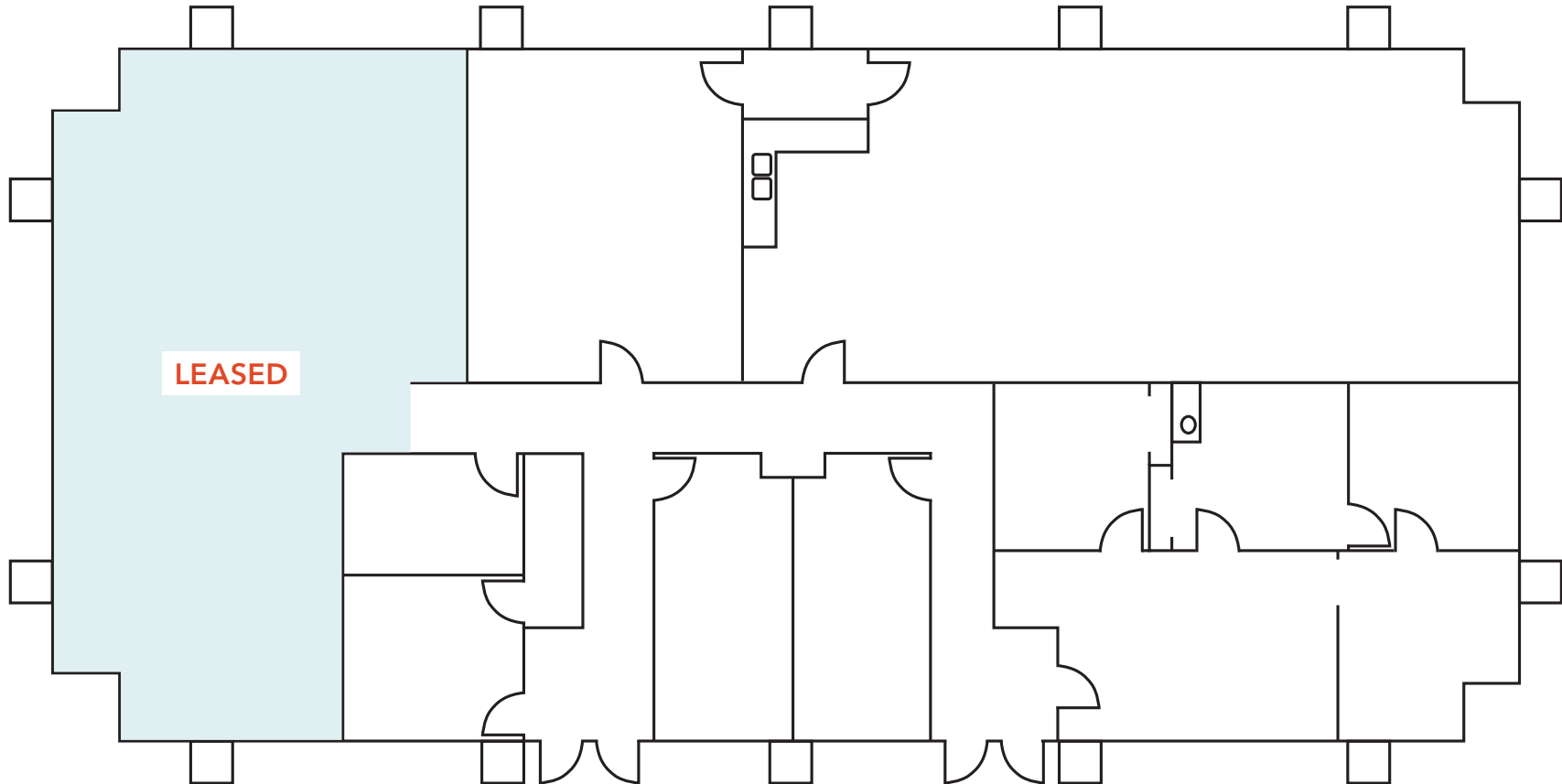
km Kidder Mathews

FOR LEASE

Folsom Park Plaza

9261 FOLSOM BLVD, SACRAMENTO, CA

Building 500



KIDDER.COM

This information supplied herein is from sources we deem reliable. It is provided without any representation, warranty, or guarantee, expressed or implied as to its accuracy. Prospective Buyer or Tenant should conduct an independent investigation and verification of all matters deemed to be material, including, but not limited to, statements of income and expenses. Consult your attorney, accountant, or other professional advisor.

km Kidder Mathews

FOR LEASE

Folsom Park Plaza

9261 FOLSOM BLVD, SACRAMENTO, CA

Building 600 - Warm Shell



KIDDER.COM

This information supplied herein is from sources we deem reliable. It is provided without any representation, warranty, or guarantee, expressed or implied as to its accuracy. Prospective Buyer or Tenant should conduct an independent investigation and verification of all matters deemed to be material, including, but not limited to, statements of income and expenses. Consult your attorney, accountant, or other professional advisor.

km Kidder
Mathews

FOR LEASE

Folsom Park Plaza

9261 FOLSOM BLVD, SACRAMENTO, CA

FEATURES

Professional Center with Office, Retail, and Medical Spaces and Buildings for Lease

Building & Monument Signage Available

Very Competitive Lease Rates

Shopping Center (SC) Zoning Allows Office, Retail, Medical, Educational, Assembly, Veterinary and Other Uses

Located Along Mass Transit Lines (Bus & Light Rail)



KIDDER.COM

This information supplied herein is from sources we deem reliable. It is provided without any representation, warranty, or guarantee, expressed or implied as to its accuracy. Prospective Buyer or Tenant should conduct an independent investigation and verification of all matters deemed to be material, including, but not limited to, statements of income and expenses. Consult your attorney, accountant, or other professional advisor.

km Kidder Mathews