



214 Estates Drive

ROSEVILLE, CA 95678

FOR LEASE



**For Leasing
Information
Contact**

JOSH KUCHUGURNY
916.751.3606
josh.kuchugurny@kidder.com
LIC N° 01974211

TYLER BOYD
916.751.3625
tyler.boyd@kidder.com
LIC N° 01927167

KEVIN SHEEHAN
916.751.3601
kevin.sheehan@kidder.com
LIC N° 00936093

**Kidder
Mathews**

This information supplied herein is from sources we deem reliable. It is provided without any representation, warranty, or guarantee, expressed or implied as to its accuracy. Prospective Buyer or Tenant should conduct an independent investigation and verification of all matters deemed to be material, including, but not limited to, statements of income and expenses. Consult your attorney, accountant, or other professional advisor.

KIDDER.COM

FOR LEASE

214 Estates Drive

ROSEVILLE, CA 95678



KIDDER.COM

This information supplied herein is from sources we deem reliable. It is provided without any representation, warranty, or guarantee, expressed or implied as to its accuracy. Prospective Buyer or Tenant should conduct an independent investigation and verification of all matters deemed to be material, including, but not limited to, statements of income and expenses. Consult your attorney, accountant, or other professional advisor.

km Kidder
Mathews

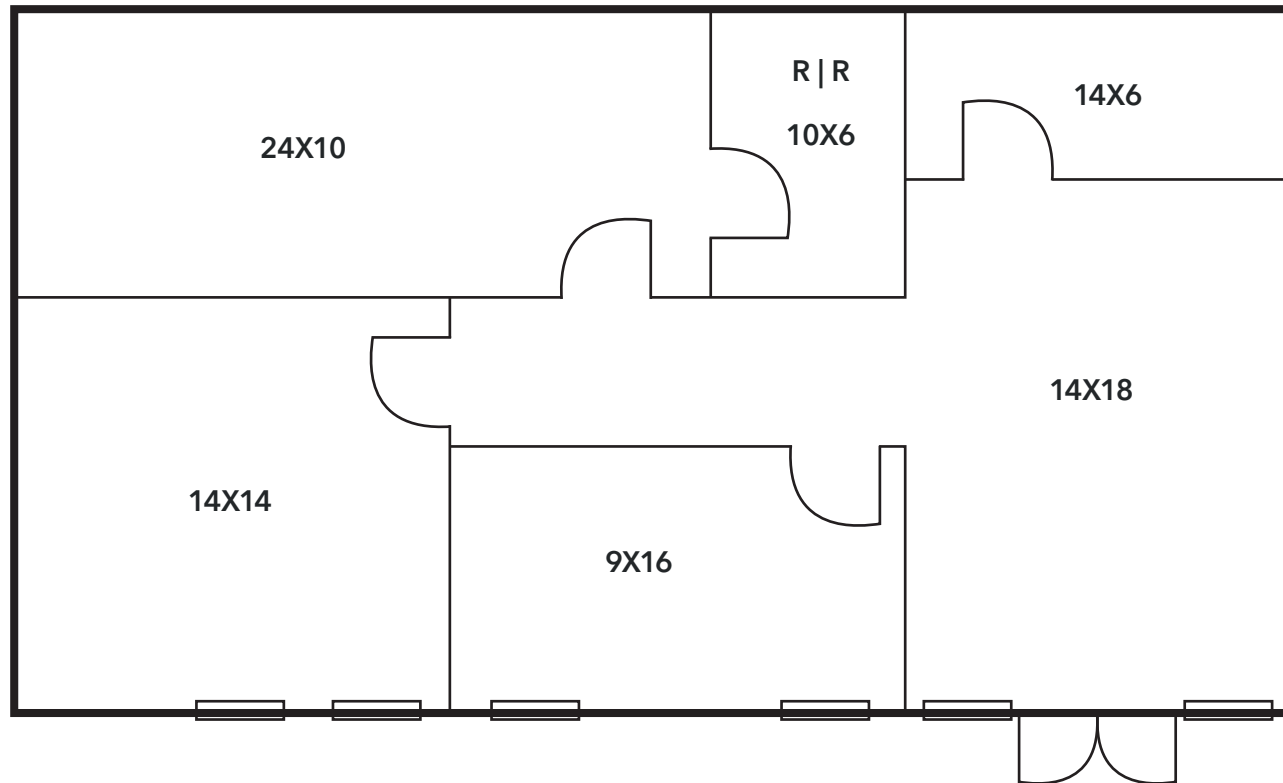
FOR LEASE

214 Estates Drive

ROSEVILLE, CA 95678

Suite E

1,120 SF



KIDDER.COM

This information supplied herein is from sources we deem reliable. It is provided without any representation, warranty, or guarantee, expressed or implied as to its accuracy. Prospective Buyer or Tenant should conduct an independent investigation and verification of all matters deemed to be material, including, but not limited to, statements of income and expenses. Consult your attorney, accountant, or other professional advisor.

km Kidder
Mathews

FOR LEASE

214 Estates Drive

ROSEVILLE, CA 95678



Lease Rate:
\$1.35/SF, FS

SUITE E: ±1,120 SF

FLEXIBLE LEASE TERMS

**WELL LOCATED BY I-80 &
DOUGLAS BLVD**

**FOOD AND SHOPPING
AMENITIES ADJACENT TO
PROPERTY**

4.0/1,000 PARKING RATIO

JOSH KUCHUGURNY

916.751.3606

josh.kuchugurny@kidder.com

LIC N° 01974211

TYLER BOYD

916.751.3625

tyler.boyd@kidder.com

LIC N° 01927167

KEVIN SHEEHAN

916.751.3601

kevin.sheehan@kidder.com

LIC N° 00936093

KIDDER.COM

This information supplied herein is from sources we deem reliable. It is provided without any representation, warranty, or guarantee, expressed or implied as to its accuracy. Prospective Buyer or Tenant should conduct an independent investigation and verification of all matters deemed to be material, including, but not limited to, statements of income and expenses. Consult your attorney, accountant, or other professional advisor.

km Kidder Mathews