



FOR LEASE

1224 Coloma Way

ROSEVILLE, CA 95661



Total Available: ±1,250 SF | Lease Rate: \$1.50/SF, MG

JOSH KUCHUGURNY
916.751.3606
josh.kuchugurny@kidder.com
LIC N° 01974211

TYLER BOYD
916.751.3625
tyler.boyd@kidder.com
LIC N° 01927167

KEVIN SHEEHAN
916.751.3601
kevin.sheehan@kidder.com
LIC N° 01333376

**Kidder
Mathews**

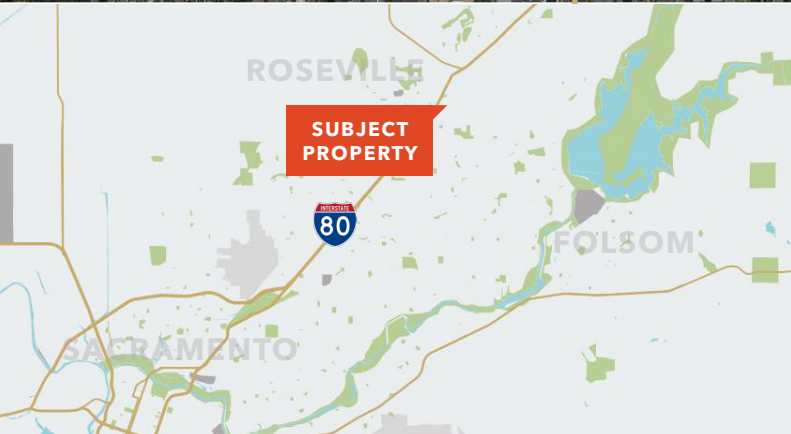
This information supplied herein is from sources we deem reliable. It is provided without any representation, warranty, or guarantee, expressed or implied as to its accuracy. Prospective Buyer or Tenant should conduct an independent investigation and verification of all matters deemed to be material, including, but not limited to, statements of income and expenses. Consult your attorney, accountant, or other professional advisor.

KIDDER.COM

FOR LEASE

1224 Coloma Way

ROSEVILLE, CA 95661



- SQUARE FEET ± 1,250 SF
- 5 OFFICES WITH PRIVATE RESTROOMS AND PRIVATE EXTERIOR ENTRY
- MOVE IN READY OFFICE SPACE

JOSH KUCHUGURNY
916.751.3606
josh.kuchugurny@kidder.com
LIC N° 01974211

TYLER BOYD
916.751.3625
tyler.boyd@kidder.com
LIC N° 01927167

KEVIN SHEEHAN
916.751.3601
kevin.sheehan@kidder.com
LIC N° 01333376

KIDDER.COM

This information supplied herein is from sources we deem reliable. It is provided without any representation, warranty, or guarantee, expressed or implied as to its accuracy. Prospective Buyer or Tenant should conduct an independent investigation and verification of all matters deemed to be material, including, but not limited to, statements of income and expenses. Consult your attorney, accountant, or other professional advisor.



FOR LEASE

1224 Coloma Way

ROSEVILLE, CA 95661



JOSH KUCHUGURNY
916.751.3606
josh.kuchugurny@kidder.com
LIC N° 01974211

TYLER BOYD
916.751.3625
tyler.boyd@kidder.com
LIC N° 01927167

KEVIN SHEEHAN
916.751.3601
kevin.sheehan@kidder.com
LIC N° 01333376

KIDDER.COM

This information supplied herein is from sources we deem reliable. It is provided without any representation, warranty, or guarantee, expressed or implied as to its accuracy. Prospective Buyer or Tenant should conduct an independent investigation and verification of all matters deemed to be material, including, but not limited to, statements of income and expenses. Consult your attorney, accountant, or other professional advisor.

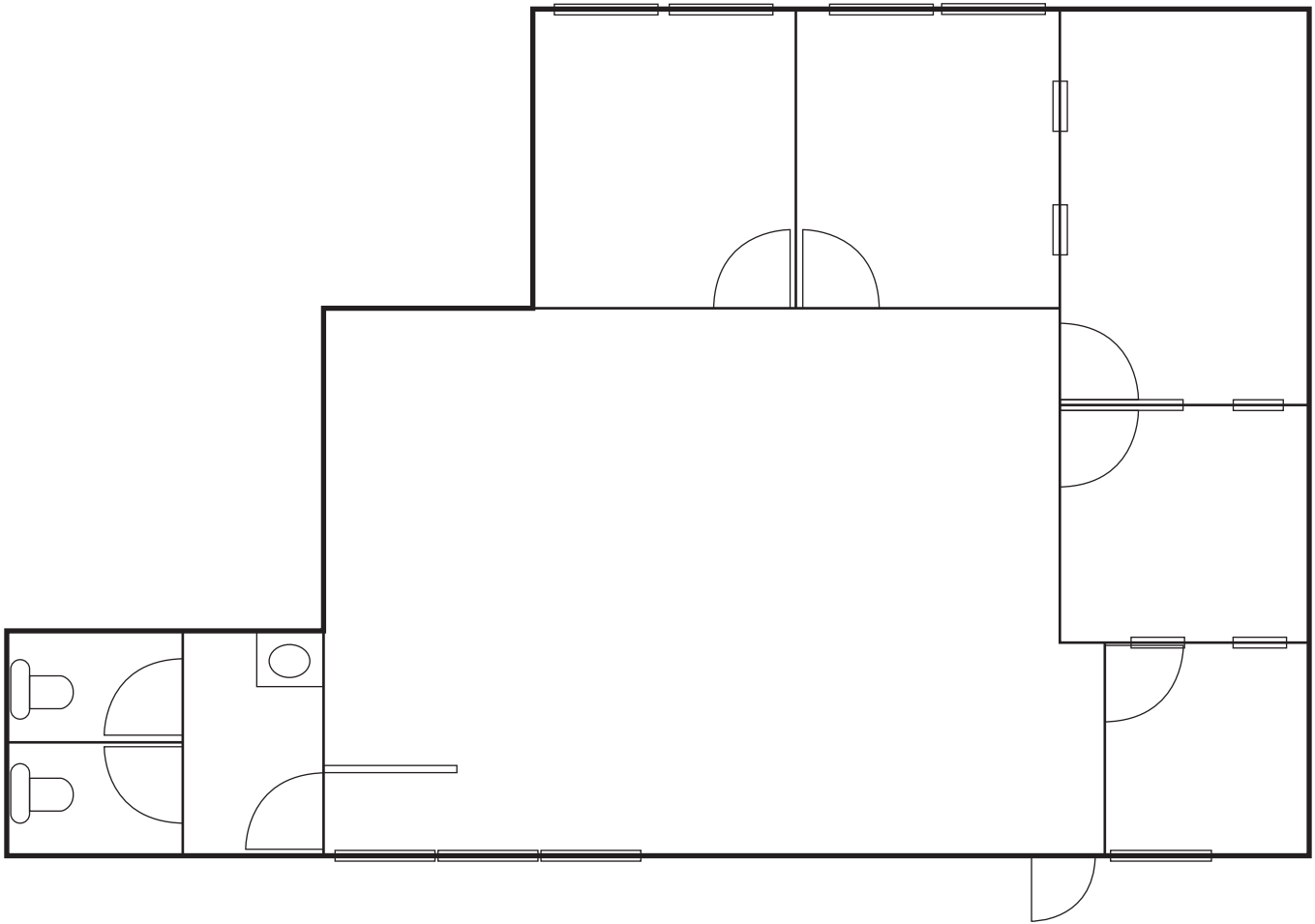


FOR LEASE

1224 Coloma Way

ROSEVILLE, CA 95661

Floor Plan



JOSH KUCHUGURNY
916.751.3606
josh.kuchugurny@kidder.com
LIC N° 01974211

TYLER BOYD
916.751.3625
tyler.boyd@kidder.com
LIC N° 01927167

KEVIN SHEEHAN
916.751.3601
kevin.sheehan@kidder.com
LIC N° 01333376

KIDDER.COM

This information supplied herein is from sources we deem reliable. It is provided without any representation, warranty, or guarantee, expressed or implied as to its accuracy. Prospective Buyer or Tenant should conduct an independent investigation and verification of all matters deemed to be material, including, but not limited to, statements of income and expenses. Consult your attorney, accountant, or other professional advisor.



FOR LEASE

1224 Coloma Way

ROSEVILLE, CA 95661



KIDDER.COM

This information supplied herein is from sources we deem reliable. It is provided without any representation, warranty, or guarantee, expressed or implied as to its accuracy. Prospective Buyer or Tenant should conduct an independent investigation and verification of all matters deemed to be material, including, but not limited to, statements of income and expenses. Consult your attorney, accountant, or other professional advisor.

 **Kidder
Mathews**