



FOR LEASE

Best Value on Douglas Blvd.

2510 DOUGLAS BLVD., ROSEVILLE CA



4,352 SF | \$2.25/SF FSG | SIGNAGE AVAILABLE

TYLER BOYD
916.751.3625
tyler.boyd@kidder.com
LIC N° 01927167

KEVIN SHEEHAN
916.751.3601
kevin.sheehan@kidder.com
LIC N° 0936093

**Kidder
Mathews**

This information supplied herein is from sources we deem reliable. It is provided without any representation, warranty, or guarantee, expressed or implied as to its accuracy. Prospective Buyer or Tenant should conduct an independent investigation and verification of all matters deemed to be material, including, but not limited to, statements of income and expenses. Consult your attorney, accountant, or other professional advisor.

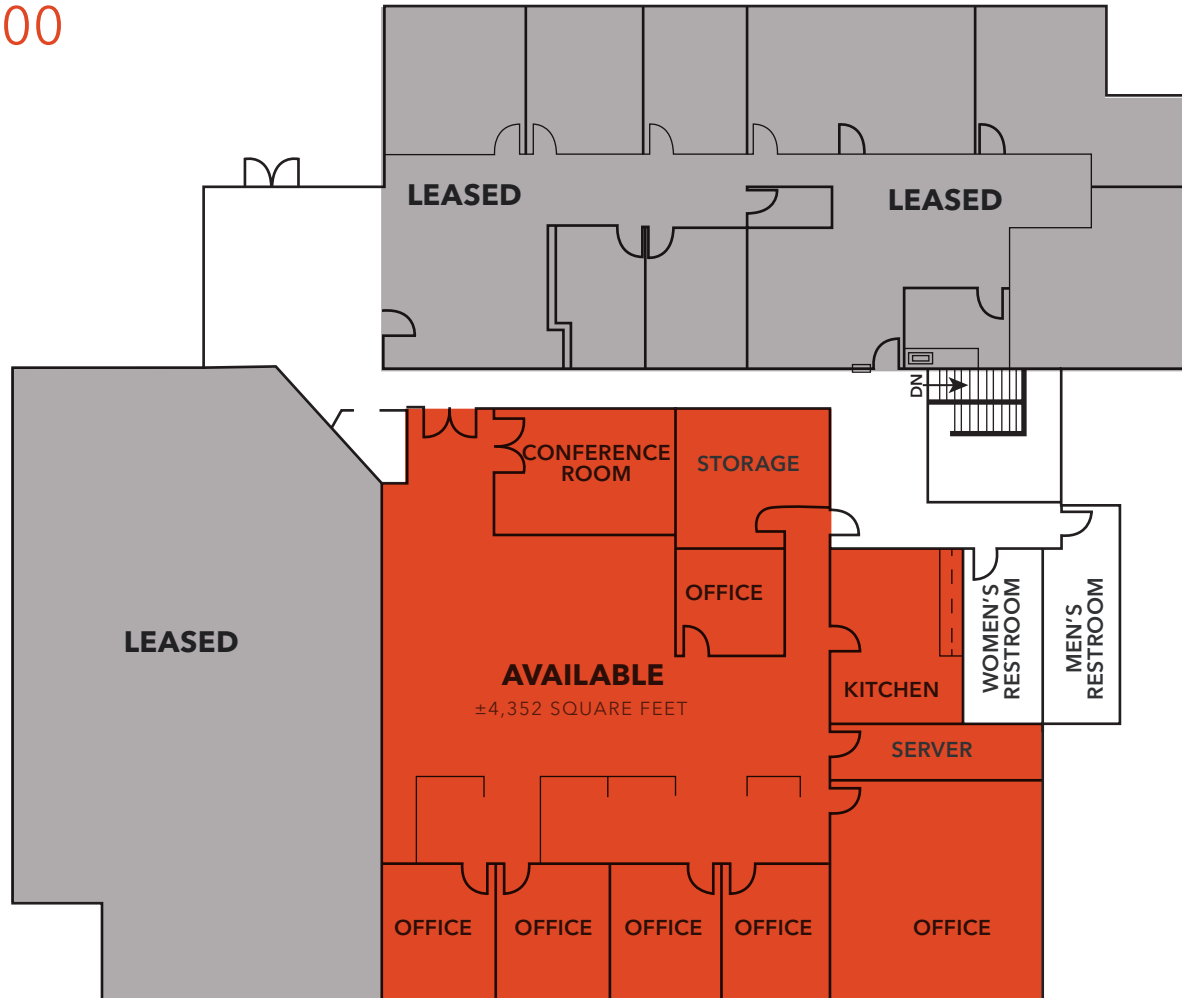
KIDDER.COM

FOR LEASE

2510 Douglas Blvd.

ROSEVILLE, CA

Suite 300



SIX (6) Large Private Offices

OPEN OFFICE Area with Five (5) Built-In Cubicles

LARGE Conference Room

RECEPTION with Waiting Area

BREAK ROOM with Kitchenette

SERVER Room

STORAGE Room

TYLER BOYD

916.751.3625

tyler.boyd@kidder.com

LIC N° 01927167

KEVIN SHEEHAN

916.751.3601

kevin.sheehan@kidder.com

LIC N° 0936093

KIDDER.COM

This information supplied herein is from sources we deem reliable. It is provided without any representation, warranty, or guarantee, expressed or implied as to its accuracy. Prospective Buyer or Tenant should conduct an independent investigation and verification of all matters deemed to be material, including, but not limited to, statements of income and expenses. Consult your attorney, accountant, or other professional advisor.



FOR LEASE

2510 Douglas Blvd.

ROSEVILLE, CA



TYLER BOYD

916.751.3625

tyler.boyd@kidder.com

LIC N° 01927167

KEVIN SHEEHAN

916.751.3601

kevin.sheehan@kidder.com

LIC N° 0936093

KIDDER.COM

This information supplied herein is from sources we deem reliable. It is provided without any representation, warranty, or guarantee, expressed or implied as to its accuracy. Prospective Buyer or Tenant should conduct an independent investigation and verification of all matters deemed to be material, including, but not limited to, statements of income and expenses. Consult your attorney, accountant, or other professional advisor.

km Kidder Mathews

FOR LEASE

2510 Douglas Blvd.

ROSEVILLE, CA



4,352

SQUARE FEET

\$2.25/SF

FSG ASKING RATE

MOVE-IN READY

FURNITURE

AVAILABLE

TYLER BOYD

916.751.3625

tyler.boyd@kidder.com

LIC N° 01927167

KEVIN SHEEHAN

916.751.3601

kevin.sheehan@kidder.com

LIC N° 0936093

KIDDER.COM

This information supplied herein is from sources we deem reliable. It is provided without any representation, warranty, or guarantee, expressed or implied as to its accuracy. Prospective Buyer or Tenant should conduct an independent investigation and verification of all matters deemed to be material, including, but not limited to, statements of income and expenses. Consult your attorney, accountant, or other professional advisor.

km Kidder
Mathews