

For Sale

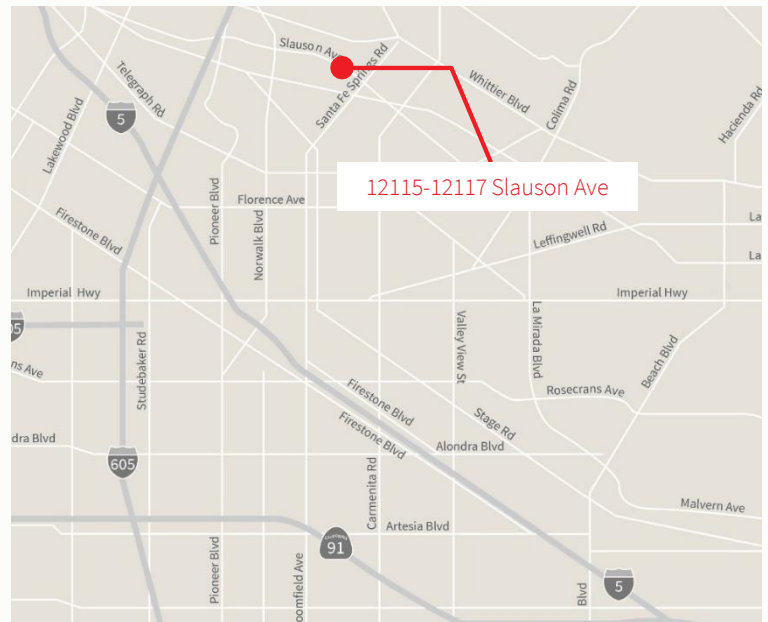


15,764 s.f. available
12115-12117 Slauson Avenue
Santa Fe Springs, CA 90670

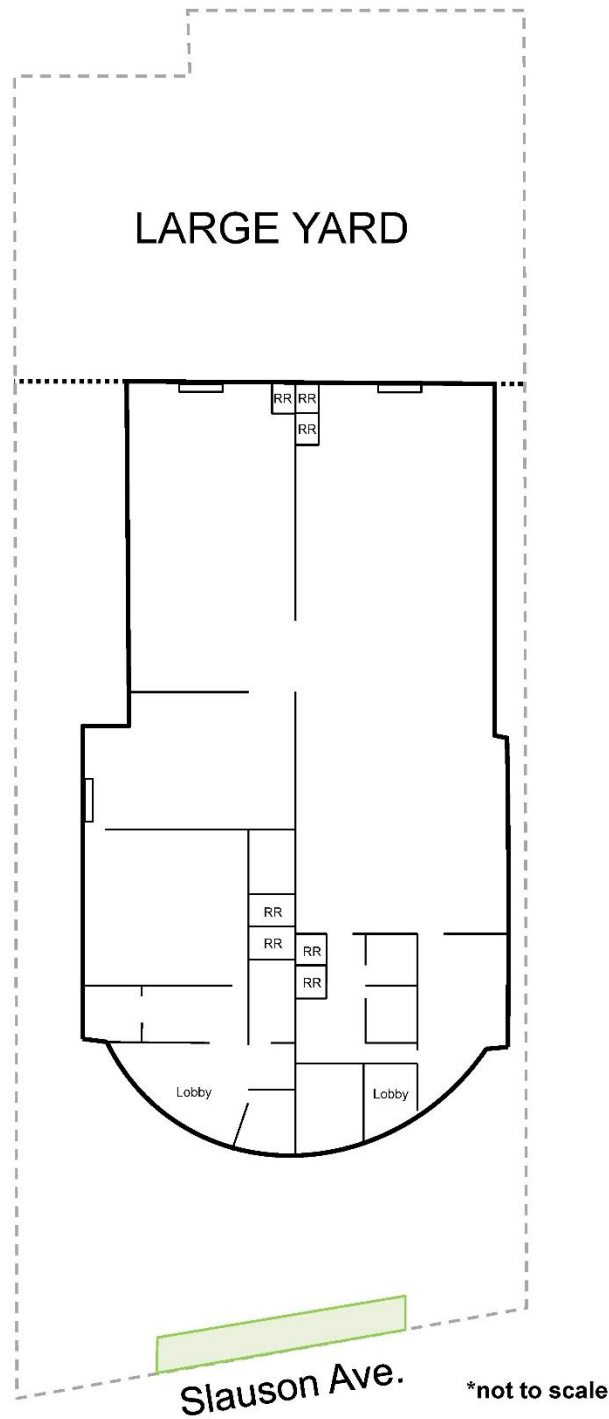
Highlights

- Major street frontage
- Large concrete/fenced yard
- Plenty of parking
- Divisible to 2 units
- Heavy power – 1,400 amps
- 3 ground-level loading doors
- Excellent access to the 5 & 605 freeways
- Asking price: \$190.00 per square foot

Note: Property is in Bankruptcy and sale is subject to bankruptcy court approval and overbid



Site plan



Joe Dimola
+1 213 239 6228

joe.dimola@am.jll.com
Lic. #01944484

Paul Sablock
+1 213 239 6230

paul.sablock@am.jll.com
Lic. #00783445

Luke McDaniel
+1 949 885 2974

luke.mcdaniel@am.jll.com
Lic. #01203625

Cameron Driscoll
+1 949 885 2976

cameron.driscoll@am.jll.com
Lic. #01224141

Although information has been obtained from sources deemed reliable, neither Owner nor JLL makes any guarantees, warranties or representations, express or implied, as to the completeness or accuracy as to the information contained herein. Any projections, opinions, assumptions or estimates used are for example only. There may be differences between projected and actual results, and those differences may be material. The Property may be withdrawn without notice. Neither Owner nor JLL accepts any liability for any loss or damage suffered by any party resulting from reliance on this information. If the recipient of this information has signed a confidentiality agreement regarding this matter, this information is subject to the terms of that agreement. ©2020. Jones Lang LaSalle IP, Inc. All rights reserved.

