

# SOMA INDUSTRIAL LOFT SPACE FOR LEASE

**1ST YEAR RENT**  
**\$12 - \$24 PER RSF**  
**\$4 PROCURING BROKER FEE**  
**CALL FOR DETAILS**

**148**  
**TOWNSEND**  
**SAN FRANCISCO**

## EXCLUSIVELY PRESENTED BY:

Bradley L. Colton  
(415) 515-2333  
bcolton@coltoncommercialsf.com  
License #: 00805116

Sonia C. Santiago  
(415) 730-3687  
ssantiago@coltoncommercialsf.com  
License #: 02017728

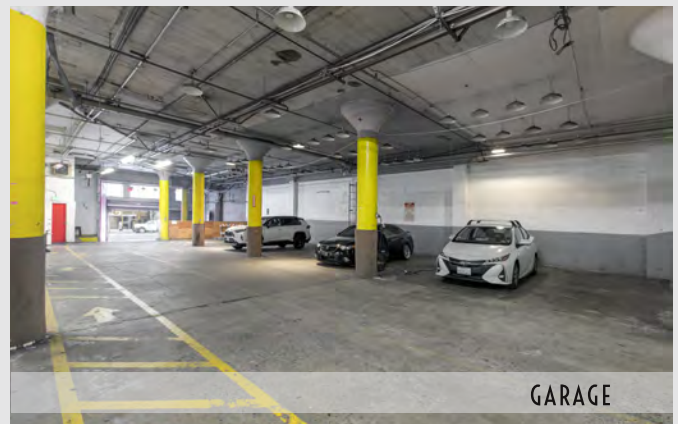
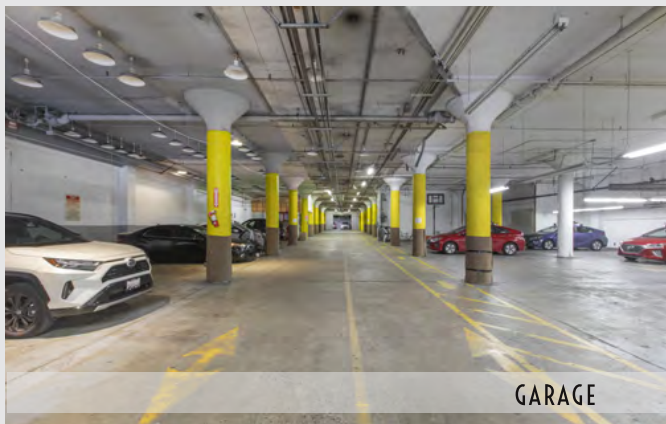
Bryan Colton  
(415) 595-6959  
bryancolton@coltoncommercialsf.com  
License #: 02111407





# PROPERTY HIGHLIGHTS

Highly improved plug & play loft suites  
Heart of SOMA close to public transportation  
Parking Available  
Below Market Rents  
24/7 Access



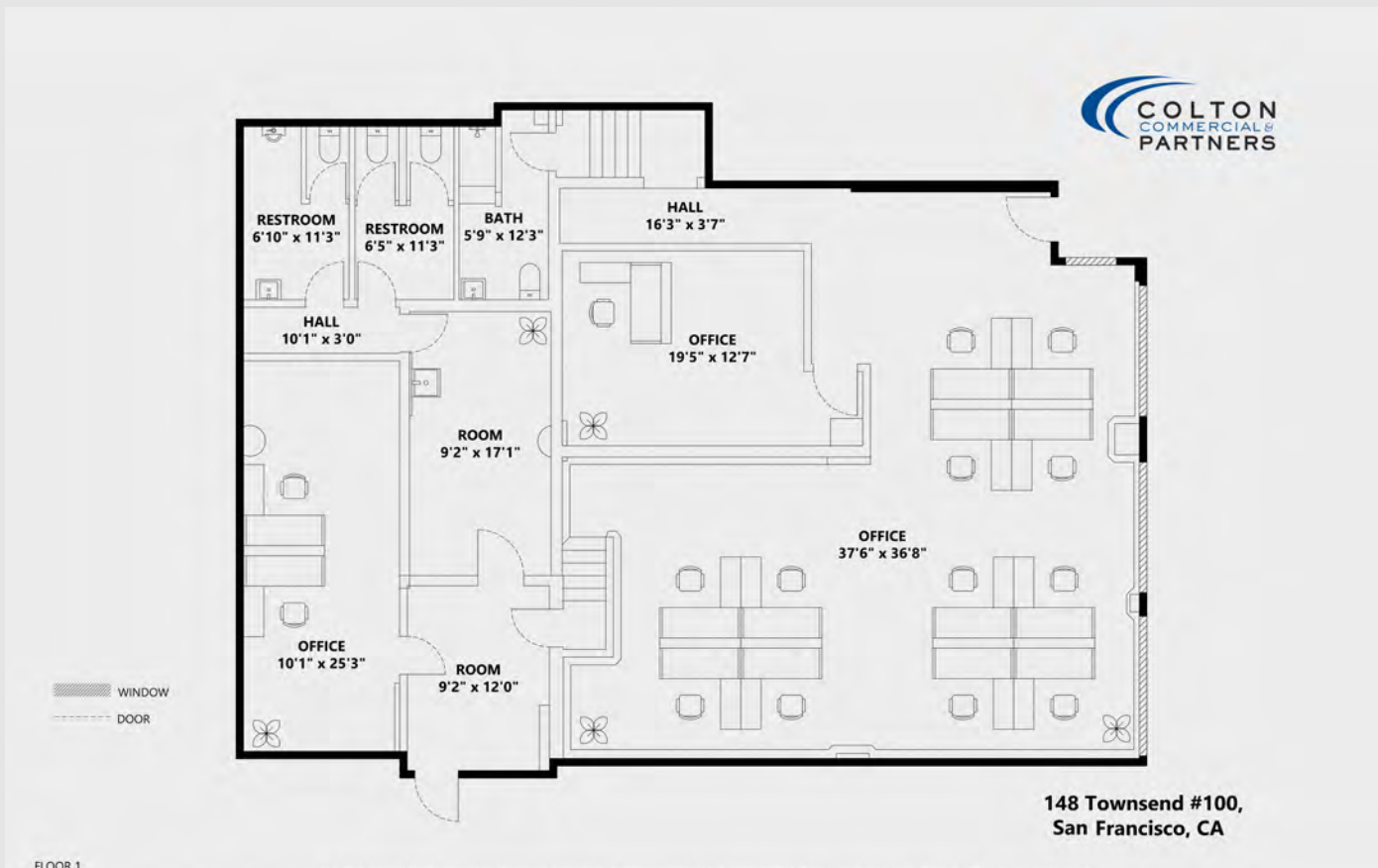
## CURRENT AVAILABILITY:

SUITE #	RSF +/-	RATE PER RSF	NOTES:
100	2,250	-	Open space, mix of private offices and conference rooms, kitchen, 2 bathrooms, adjacent to parking garage for lease
205	5,822	\$24.00 FS	Plug & Play
214	3,800	-	Plug & Play
2nd floor	200-20,000	\$12.00 - \$19.00 FS	Mix of offices, rooms, studios, and open space

# FLOOR PLAN SUITE # 100



Suite # 100 2,250 RSF

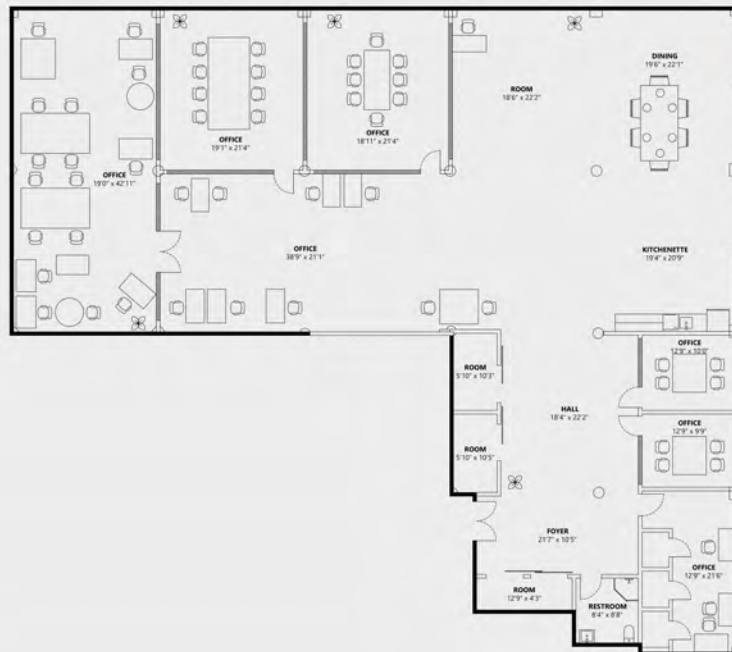


The foregoing is based upon information provided by others which we believe is accurate, however, no guarantee, warranty or representation is made. We recommend that all interested parties independently verify its accuracy and completeness. As well, any projections, assumptions, opinions, or estimates are used for example only and do not represent the current or future performance of the identified property. Your tax, financial, legal and toxic substance advisors should conduct a careful independent investigation of the property and its suitability for your needs, including land use limitations. The property is subject to prior lease, sale, change in price, or withdrawal from the market without notice.



Colton Commercial & Partners  
530 Bush Street, Suite 800, San Francisco, CA 94108  
P: 415.834.1600 [www.coltoncommercialsf.com](http://www.coltoncommercialsf.com)

# FLOOR PLAN SUITE# 205



**148 Townsend #205,  
San Francisco, CA**

The foregoing is based upon information provided by others which we believe is accurate, however, no guarantee, warranty or representation is made. We recommend that all interested parties independently verify its accuracy and completeness. As well, any projections, assumptions, opinions, or estimates are used for example only and do not represent the current or future performance of the identified property. Your tax, financial, legal and toxic substance advisors should conduct a careful independent investigation of the property and its suitability for your needs, including land use limitations. The property is subject to prior lease, sale, change in price, or withdrawal from the market without notice.

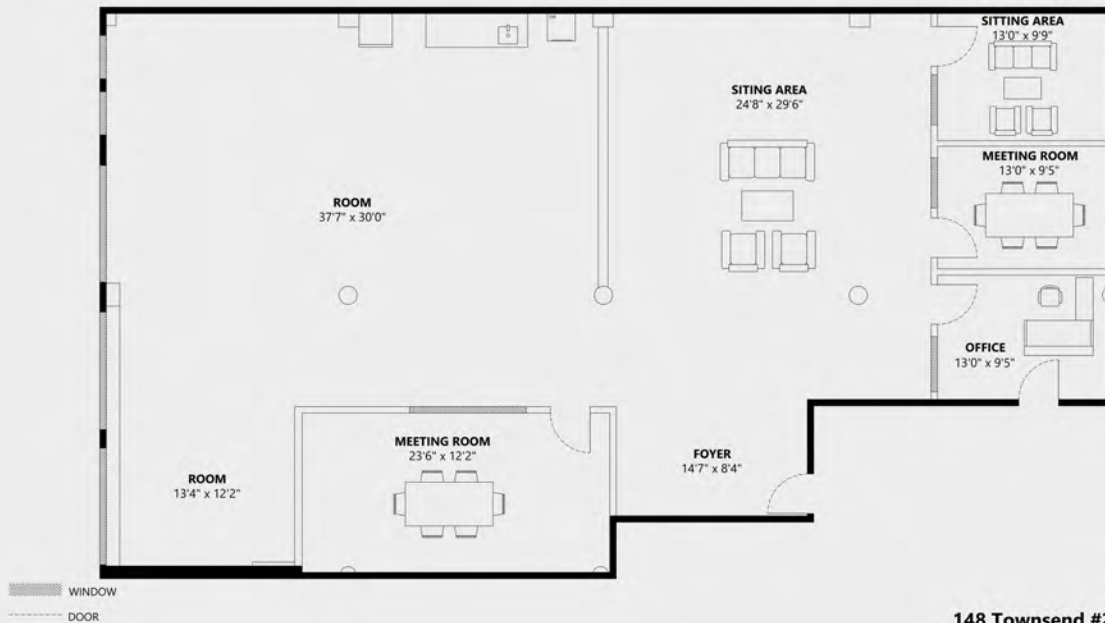


Colton Commercial & Partners  
530 Bush Street, Suite 800, San Francisco, CA 94108  
P: 415.834.1600 [www.coltoncommercialsf.com](http://www.coltoncommercialsf.com)

# FLOOR PLAN SUITE# 214



Suite # 214 3,800 RSF



148 Townsend #214,  
San Francisco, CA



Colton Commercial & Partners  
530 Bush Street, Suite 800, San Francisco, CA 94108  
P: 415.834.1600 [www.coltoncommercialsf.com](http://www.coltoncommercialsf.com)



# LOCATION MAP



## LEGEND



- Across from ATT Park
- Close to Caltrain
- 1 Block to MUNI

**EXCLUSIVELY PRESENTED BY:**

Bradley L. Colton  
(415) 515-2333  
bcolton@coltoncommercialsf.com  
License #: 00805116

Sonia C. Santiago  
(415) 730-3687  
ssantiago@coltoncommercialsf.com  
License #: 02017728

Bryan Colton  
(415) 595-6959  
bryancolton@coltoncommercialsf.com  
License #: 02111407



Colton Commercial & Partners  
530 Bush Street, Suite 800, San Francisco, CA 94108  
P: 415.834.1600 [www.coltoncommercialsf.com](http://www.coltoncommercialsf.com)