

# 2655

Camino Del Rio N  
San Diego, CA 92108

**For Lease**  
Mission Valley



4350 La Jolla Village Drive, Suite 500  
San Diego, CA 92122  
+1 858 455 1515  
[www.colliers.com](http://www.colliers.com)

**Derek Applbaum**  
Senior Vice President  
Lic. No. 01280412  
+1 858 677 5331  
[derek.applbaum@colliers.com](mailto:derek.applbaum@colliers.com)

# Building Features | Amenities



Spec Suites Available



Abundant Parking: Over 6.0 / per 1000 SF



On-site Management



Newly Remodeled Courtyard, Furnishings & Restrooms



Close Proximity to Public Transportation



Easy Access to I-8, I-805, I-15 and Hwy 163



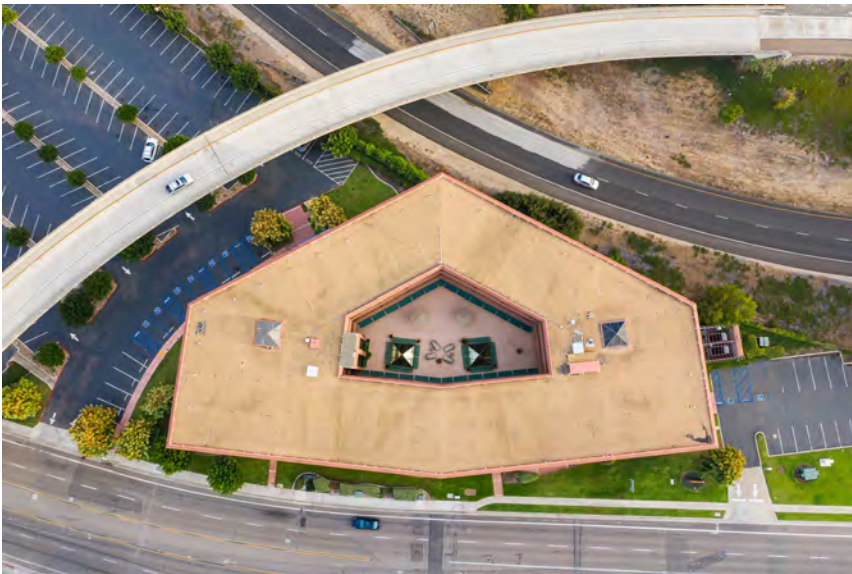
Office Lease Rate \$2.70/SF + Electric



# Exterior


---

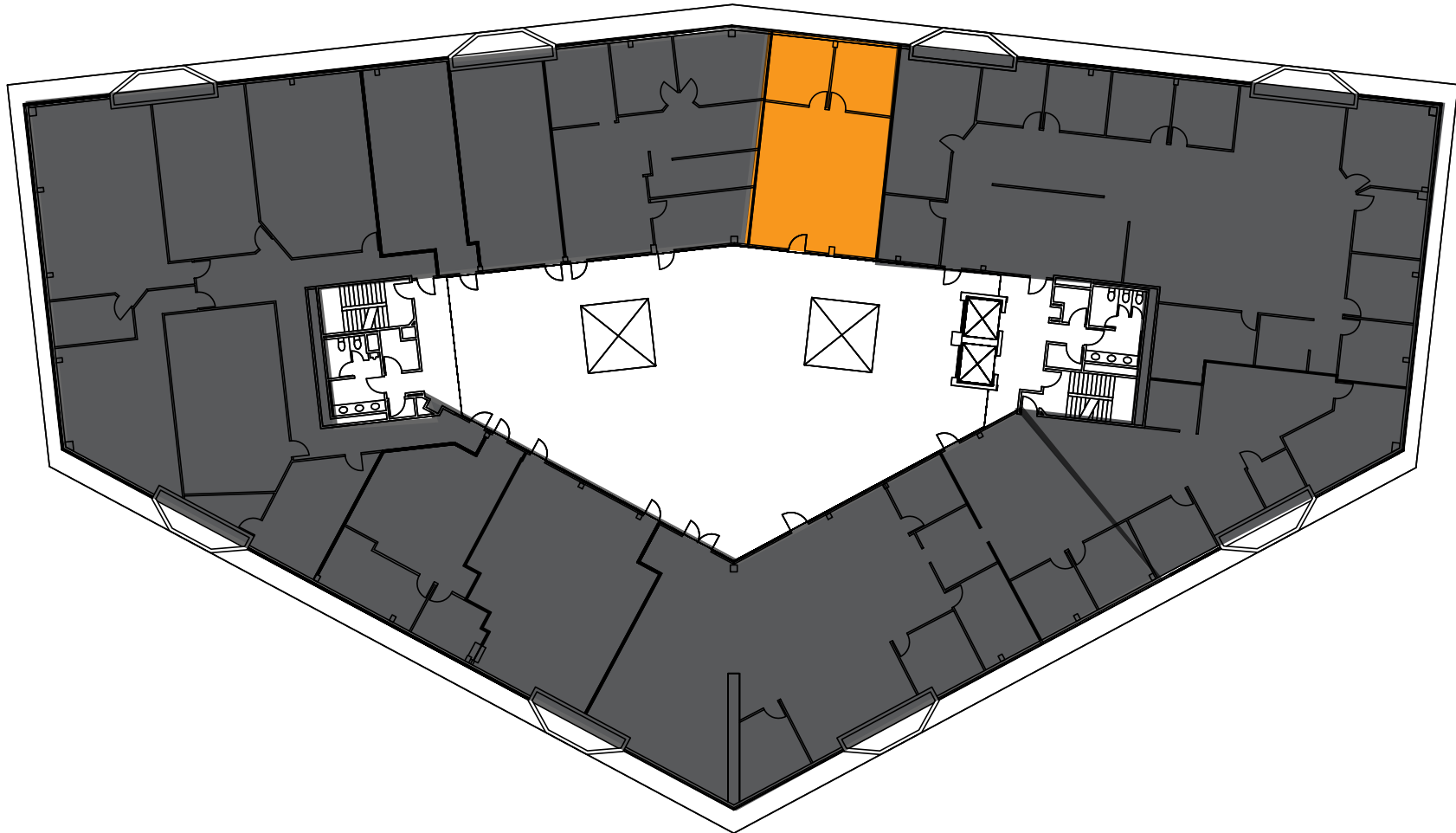
Easy Access



Abundant Parking

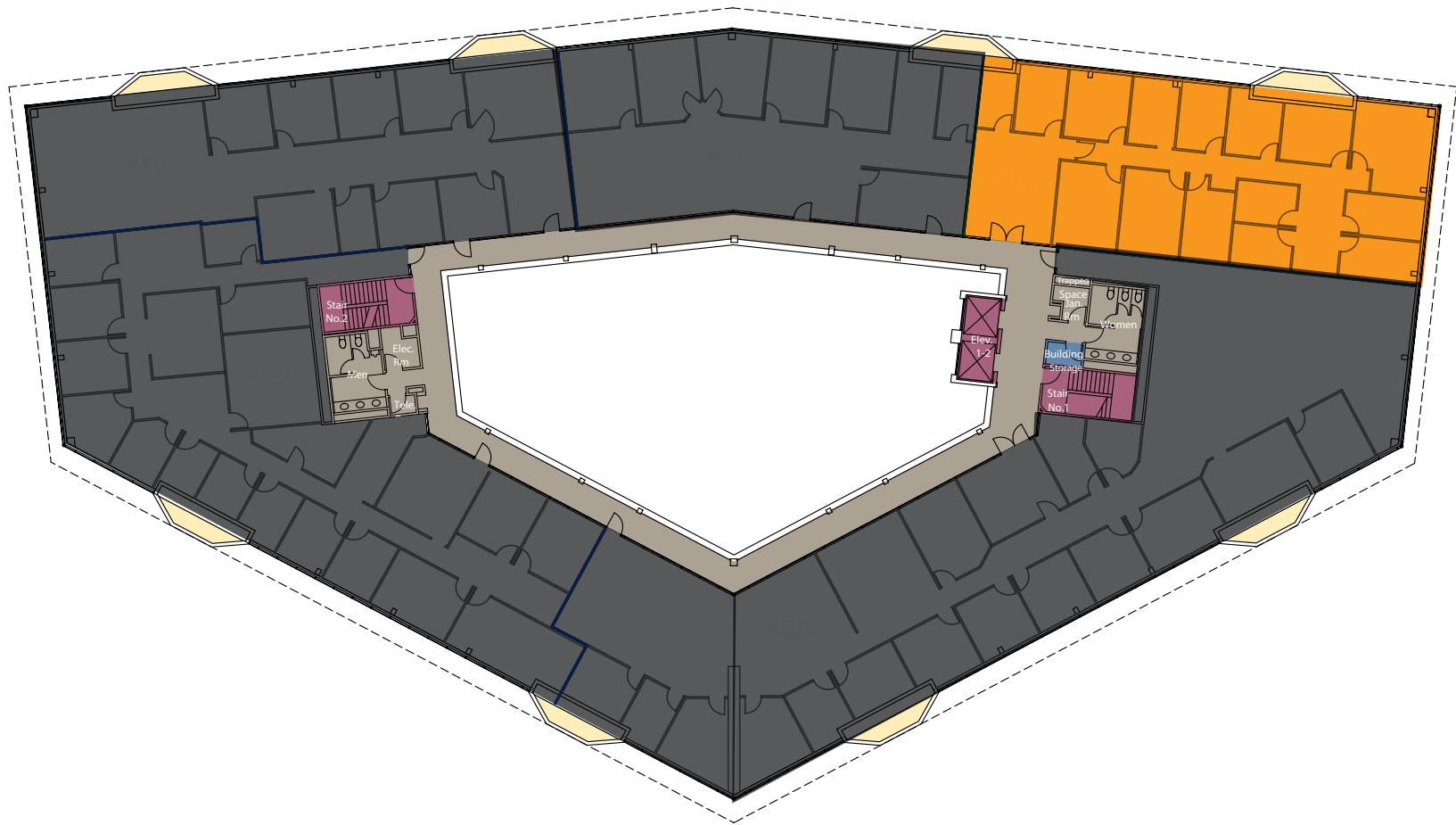
# Availabilities

SUITE	RSF	RATE	AVAILABLE	COMMENTS
210	1,120	\$2.70 + E	Now 	Reception, two window line offices and large open area. Plumbing available for break room.



# Availabilities

SUITE	RSF	RATE	AVAILABLE	COMMENTS
430	3,370	\$2.70 + E	12/1/2024	Reception area, multiple window line offices, conference room, server room, kitchen/breakroom, and open area.





# MISSION VALLEY



**Interstate 8**  
3 min.



**State Route 163**  
9 min.



**Interstate 805**  
5 min.



**Interstate 15**  
6 min.



**Fashion Valley Mall**  
7 min.



**Mission Valley Mall**  
3 min.



**San Diego Airport**  
16 min.

# 2655

Camino Del Rio N  
San Diego, CA 92108

**For Lease**  
Mission Valley

**Colliers**

4350 La Jolla Village Drive, Suite 500  
San Diego, CA 92122  
+1 858 455 1515  
[www.colliers.com](http://www.colliers.com)

**Derek Applbaum**  
Senior Vice President  
Lic. No. 01280412  
+1 858 677 5331

[derek.applbaum@colliers.com](mailto:derek.applbaum@colliers.com)

*©2023 Colliers International. Information herein has been obtained from sources deemed reliable, however its accuracy cannot be guaranteed. The user is required to conduct their own due diligence and verification*