



**SWOPE  
LEES**  
COMMERCIAL  
REAL ESTATE

**AVAILABLE FOR LEASE**  
**10 MALIN ROAD MALVERN, PA 19355**

PA Real Estate Broker #RB 066946

610.429.0200  
[www.SwopeLees.com](http://www.SwopeLees.com)  
208 E Market Street, West Chester, PA 19382

**JIM LEES**

Jim@swopelees.com  
610.429.0200

**NICOLE LYDDANE**

Nicole@swopelees.com  
610.429.0200

**NICK BRANTON**

Nick@swopelees.com  
610.429.0200

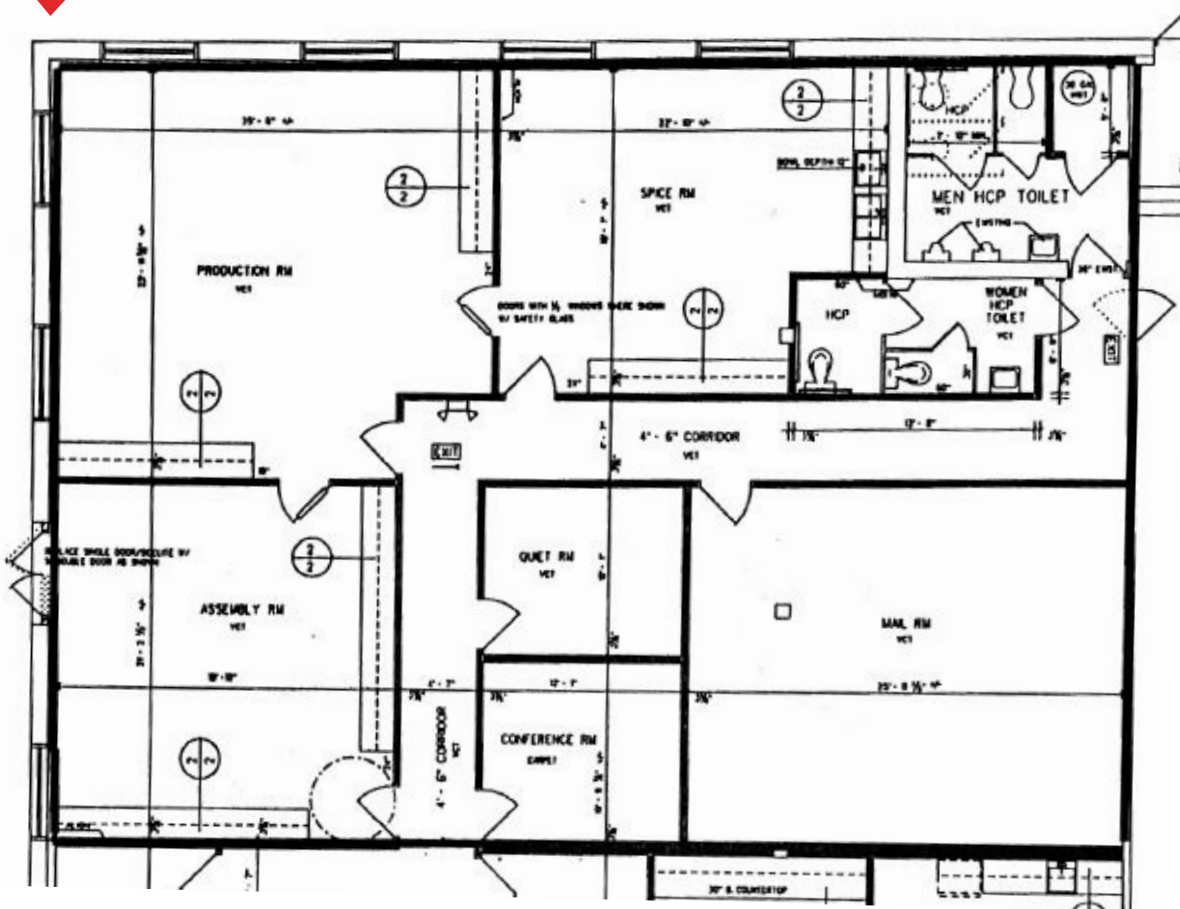


**Available for Lease: \$13 SF/Year** 3 Suites: 3,125 SF (Floor 1), 2,500 SF (Floor 1) and 800 SF (basement)

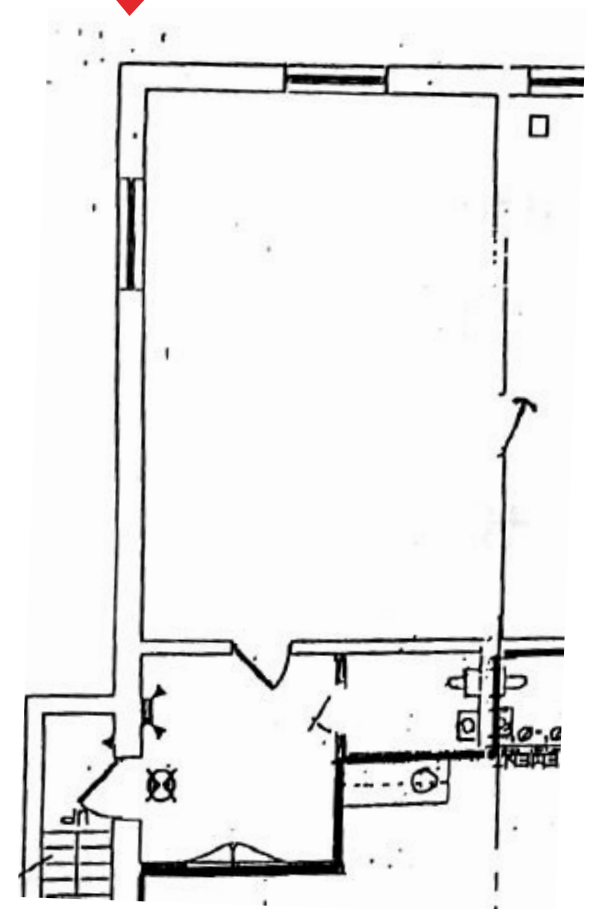
**Floor to Ceiling Windows, Flexible Floor Plans, Ample Parking, 3-Phase, 1400 Amp Power, Centralized Location,  
Newly Rezoned: Industrial Zoning District in East Whiteland Township.**

Please Note: One of the owners of this property is a PA licensed Real Estate Agent

**Suite A - 3,125 SF Available**



**Suite F - 800 SF Available**



Contact for Details

**610.429.0200**

Information concerning this and all offerings is from sources deemed reliable, but no warranty is made as to the accuracy thereof and is submitted subject to errors, omissions, change of price or other conditions, prior sale or lease or withdrawal without notice.