

29982 IVY GLENN DRIVE | LAGUNA NIGUEL

FOR LEASE

- SUITE 100: ± 11,181 SF (DIVISIBLE)
- PRIME SOUTH COUNTY LOCATION
- ELEVATOR SERVED
- FREE SURFACE PARKING (4.47:1)
- CLOSE ACCESS TO THE 73 AND 5 FREEWAYS
- FLEXIBLE LAYOUTS AND SIZES
- WALK TO RETAIL AND RESTAURANTS (LAGUNA NIGUEL TOWN CENTER)
- AVAILABLE NOW
- BUILDING AND MONUMENT SIGNAGE AVAILABLE
- LEASE RATE: \$2.50 FSG



ALLEN BASSO
Senior Vice President
CaDRE 01298152
949.790.3130
abasso@leeirvine.com

ERIC DARNELL
Vice President
CaDRE 01888743
949.790.3157
edarnell@leeirvine.com

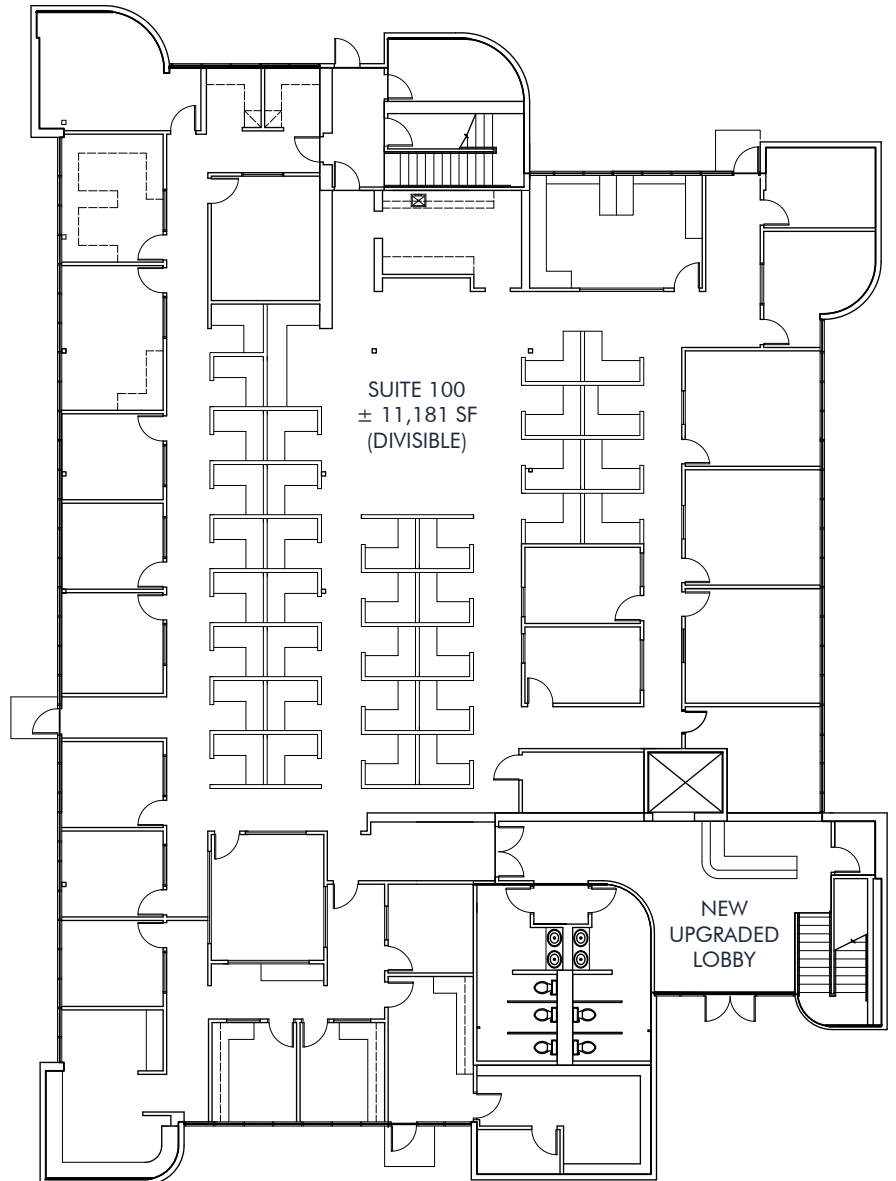
orange county
OFFICE | GROUP

FOR LEASE

29982 IVY GLENN DRIVE | LAGUNA NIGUEL



FULL FIRST FLOOR
± 11,181 SF



COMMERCIAL REAL ESTATE SERVICES

ALLEN BASSO
Senior Vice President
CaDRE 01298152
949.790.3130
abasso@leeirvine.com

ERIC DARNELL
Vice President
CaDRE 01888743
949.790.3157
edarnell@leeirvine.com

orange county

OFFICE | GROUP



ALLEN BASSO
Senior Vice President
CaDRE 01298152
949.790.3130
abasso@leeirvine.com

ERIC DARNELL
Vice President
CaDRE 01888743
949.790.3157
edarnell@leeirvine.com

orange county
OFFICE | GROUP



ALLEN BASSO
Senior Vice President
CaDRE 01298152
949.790.3130
abasso@leeirvine.com

ERIC DARNELL
Vice President
CaDRE 01888743
949.790.3157
edarnell@leeirvine.com