

SEC NORTH AURORA ROAD AND EOLA ROAD

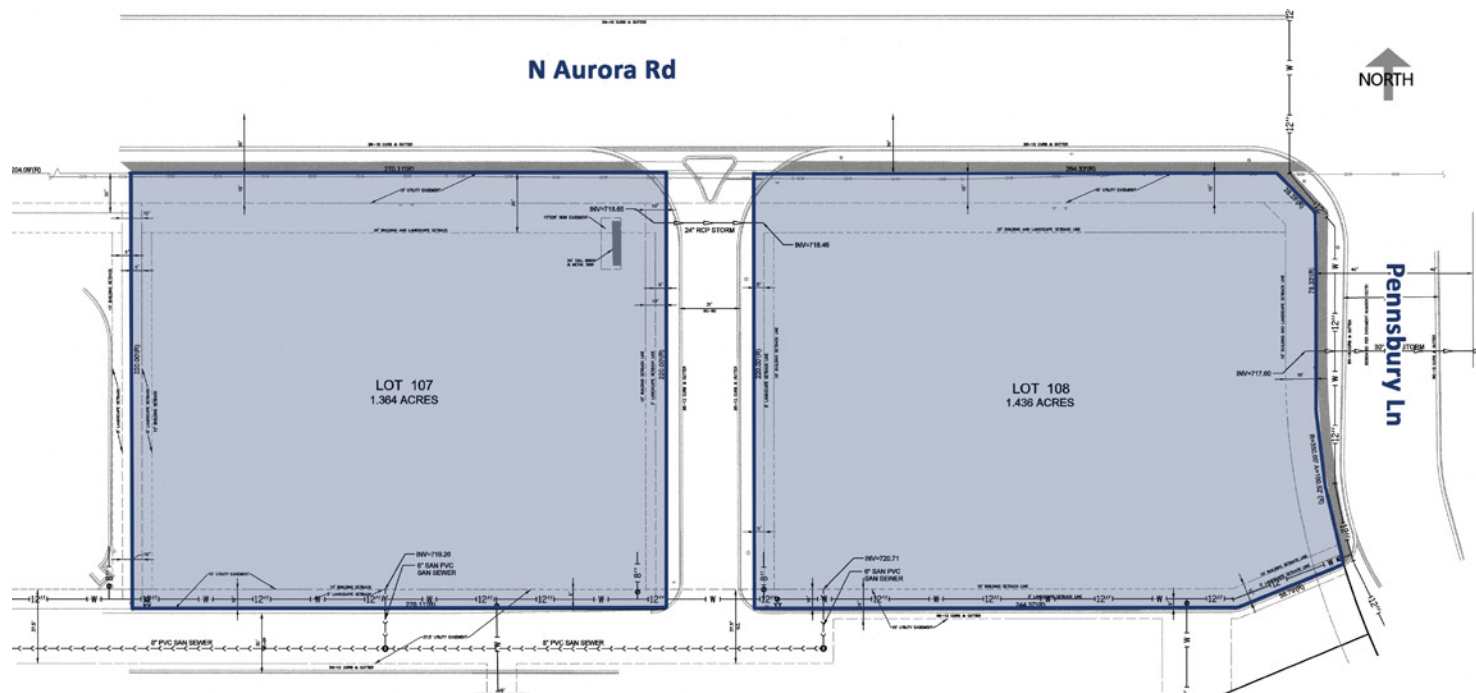
AURORA, IL

JEWEL-OSCO
ANCHORED OUTLOTS



PAD SITE AVAILABLE FOR SALE OR GROUND LEASE SEC NORTH AURORA RD & EOLA RD

Aurora, IL



PAD SIZES

PAD 1 1.36 Acres

PAD 2 1.43 Acres

SITE SUMMARY

- Outlots Available to high volume Jewel-Osco anchored shopping center with 52,000 vehicles per day at the intersection.
- Primary daily-needs shopping center serving a dense, high income residential population.
- Located near busiest Rail Terminal in Metra system (Route 59 - 5,858 Daily boardings), Metea Valley H.S. (2,871 students) and Stonebridge Country Club.

POPULATION DENSITY

7,582	1 Mile
85,050	3 Mile
256,047	5 Mile

DAYTIME EMPLOYMENT

3,383	1 Mile
41,027	3 Mile
658,864	5 Mile

AVERAGE HH INCOME

\$158,851	1 Mile
\$98,904	3 Mile
\$100,089	5 Mile

AREA TENANTS



PAD SITE AVAILABLE FOR SALE OR GROUND LEASE SEC NORTH AURORA RD & EOLA RD

Aurora, IL



CONTACT

Matt Cavanagh
matt@arcgrp.com
(630) 908-5694

Cooper Annenberg
cooper@arcgrp.com
(630) 908-5697

© 2018 A-R-C Real Estate. All information is from sources believed reliable, not independently verified, and thus subject to errors, omissions, and modifications such as price, listing, square footage, rates and commissions. All information, estimates and projections subject to change, market assumptions, unknown facts and conditions, and future potentialities. A-R-C Real Estate makes no express or implied representations or warranties, as facts and results may vary materially from all information, estimates and projections. All renderings presented are conceptual.

A-R-C
REAL ESTATE