

FOR LEASE

301 E Wallace Kneeland Blvd
Shelton, WA 98584



KNEELAND PLAZA

Carrie Walker

First Western Properties—Tacoma Inc. | 253.472.0404
6402 Tacoma Mall Blvd, Tacoma, WA 98409 | fwp-inc.com

KNEELAND PLAZA is located in desirable North Shelton and has a great mix of well established National and local tenants. Join Fred Meyer, Dollar Tree, O'Reilly's and More!

301 E WALLACE KNEELAND BLVD:

1,290 SF \$22.00 PSF \$6.50 NNN

- Immediately off Highway 101
- Excellent Signage and Visibility
- Near the new Shelton Hills Master Planned Community which will have up to 1,800 residential lots



Population



Average HH Income



Daytime Population

Regis - 2018

Mile	Population	Average HH Income	Daytime Population
Mile 1	3,139	\$49,014	4,727
Mile 3	14,526	\$57,715	13,194
Mile 5	22,644	\$66,444	18,808

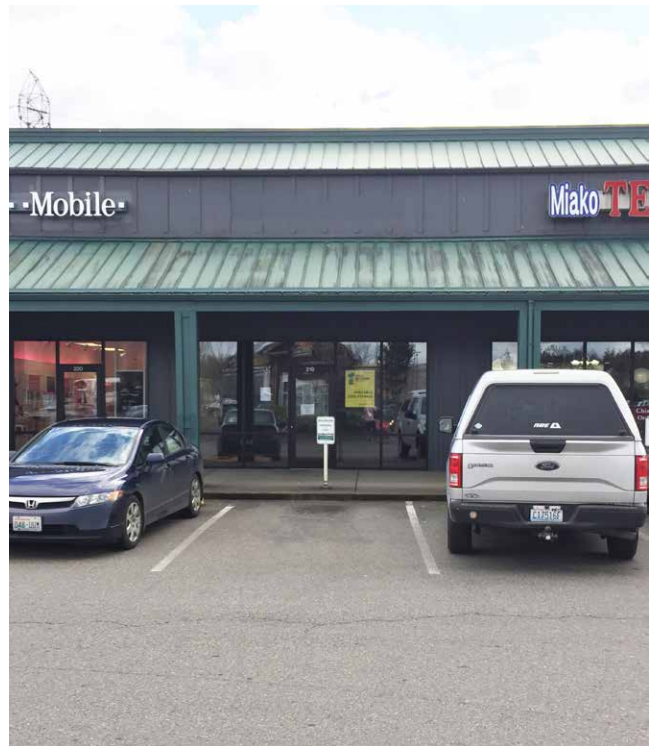
TENANTS



Occupant Name	SF
Goodwill Industries	10,400
Miako Teryaki	1,300
Available	1,290
T-Mobile	1,040
Sally Beauty Supply LLC #2212	1,520
Tkach & Tkach/Deser Sun	1,546
Kneeland Plaza Cleaners	1,600
Shelton Mail & Ship	1,300
Gamestop, Inc	2,080
Rent-A-Center West, Inc	3,500
Big Foot Java	0



SUMMARY



LOCATION AERIAL

OAK BAY
JR HIGH SCHOOL

Walmart

10,865 CPD

10,634 CPD - E WALLACE KNEELAND BLVD



verizon



Fred Meyer



FUTURE
SHELTON
HILLS



14,744 CPD

14,718 CPD - OLYMPIC HIGHWAY N

1,800
RESIDENTIAL
LOTS PLANNED



TACOMA | KIRKLAND | PORTLAND | SEATTLE



RETAIL FOCUSED. RESULTS DRIVEN.

CARRIE WALKER

253.284.3644

carrie@firstwesternproperties.com



First Western Properties—Tacoma Inc. | 253.472.0404
6402 Tacoma Mall Blvd, Tacoma, WA 98409 | fwp-inc.com

© First Western Properties, Inc. DISCLAIMER: The above information has been secured from sources believed to be reliable, however, no representations are made to its accuracy. Prospective tenants or buyers should consult their professional advisors and conduct their own independent investigation. Properties are subject to change in price and/or availability without notice.