

FOR LEASE
1,194 - 2,075 SF

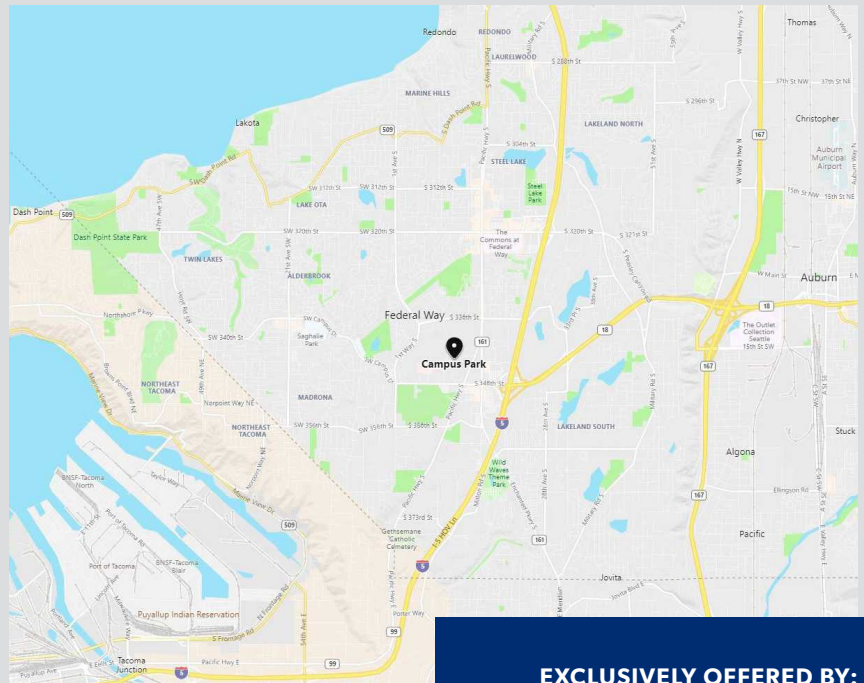
CAMPUS PARK
9TH AVE S & S 344TH ST | FEDERAL WAY, WA



WAREHOUSE/OFFICE SPACE

PROPERTY FEATURES

- Ideal for light manufacturing and distribution with small office
- All bay units have restrooms, small office, and reception area
- High-quality space with new carpet and paint
- 3-phase power
- GL loading doors (10' x 10')
- 14' CH
- Excellent access and proximity to I-5, SR-18, and SR-99
- Within minutes to nearby businesses, banking, restaurants, and retail services



EXCLUSIVELY OFFERED BY:

Arne Svendsen
(206) 947-2885
asvendsen@andoverco.com



900 SW 16th St, Ste 100
Renton, WA 98057
(206) 244-0770
www.andoverco.com

Campus Park is owned and operated by:



The information contained herein has been obtained from reliable sources, but is not guaranteed. A prospective buyer/tenant should verify each item relating to this property and all information contained herein.

FOR LEASE
1,194 - 2,075 SF

CAMPUS PARK
9TH AVE S & S 344TH ST | FEDERAL WAY, WA



| UNIT # | TOTAL SF ± | OFFICE SF ± | MONTHLY RENT | EST. NNN'S | AVAILABLE | LOADING |
|--------|------------|-------------|--------------|------------|------------|---------|
| 106 | 1,907 | 601 | \$1,621 | \$572 | Now | 1 GL |
| 302 | 2,075 | 686 | \$1,764 | \$623 | Now | 1 GL |
| 305 | 1,275 | 560 | \$1,084 | \$383 | 04/01/2020 | 1 GL |



900 SW 16th St, Ste 100
Renton, WA 98057
(206) 244-0770
www.andoverco.com

EXCLUSIVELY OFFERED BY:

Arne Svendsen
(206) 947-2885
asvendsen@andoverco.com

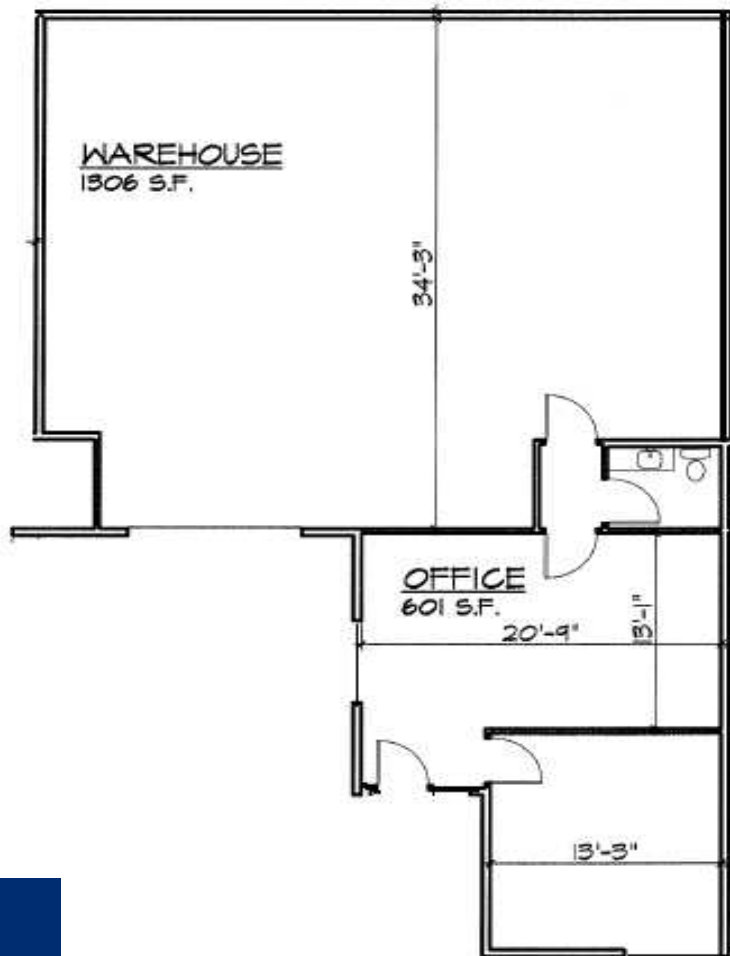
Campus Park is owned and operated by:



The information contained herein has been obtained from reliable sources, but is not guaranteed. A prospective buyer/tenant should verify each item relating to this property and all information contained herein.

FOR LEASE
1,194 - 2,075 SF

CAMPUS PARK
9TH AVE S & S 344TH ST | FEDERAL WAY, WA



UNIT 106



900 SW 16th St, Ste 100
Renton, WA 98057
(206) 244-0770
www.andoverco.com

EXCLUSIVELY OFFERED BY:

Arne Svendsen
(206) 947-2885
asvendsen@andoverco.com

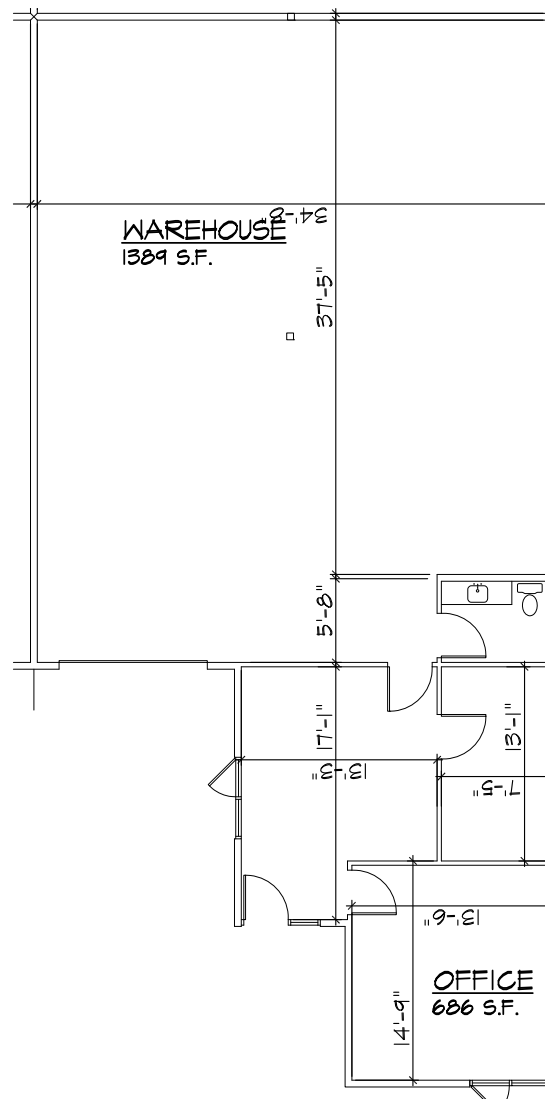
Campus Park is owned and operated by:



The information contained herein has been obtained from reliable sources, but is not guaranteed. A prospective buyer/tenant should verify each item relating to this property and all information contained herein.

FOR LEASE
1,194 - 2,075 SF

CAMPUS PARK
9TH AVE S & S 344TH ST | FEDERAL WAY, WA



UNIT 302



900 SW 16th St, Ste 100
Renton, WA 98057
(206) 244-0770
www.andoverco.com

EXCLUSIVELY OFFERED BY:

Arne Svendsen
(206) 947-2885
asvendsen@andoverco.com

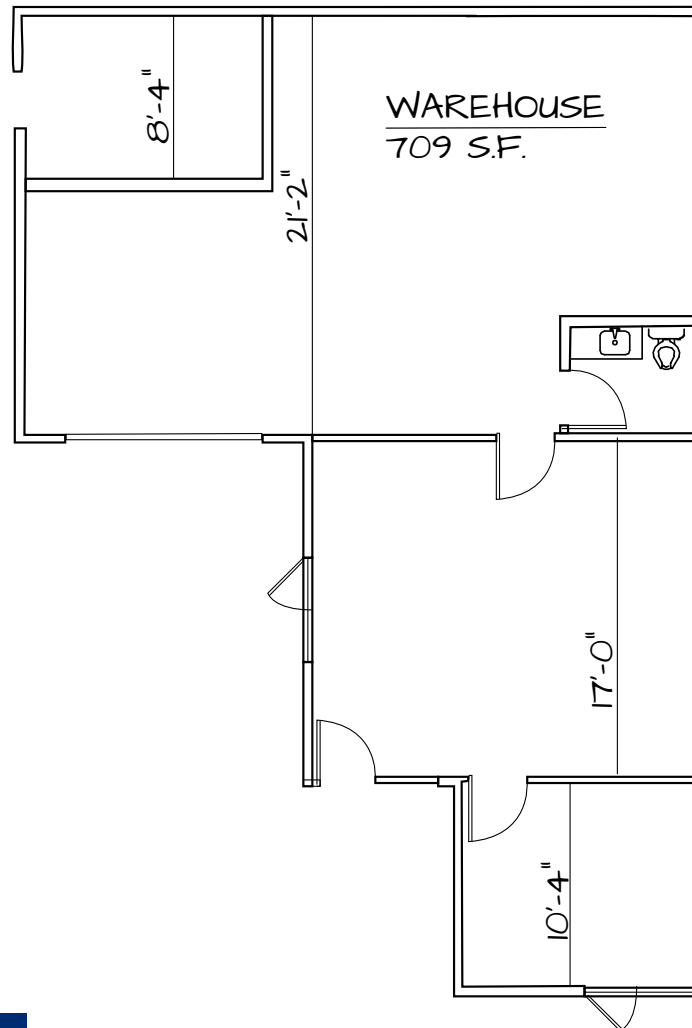
Campus Park is owned and operated by:



The information contained herein has been obtained from reliable sources, but is not guaranteed. A prospective buyer/tenant should verify each item relating to this property and all information contained herein.

FOR LEASE
1,194 - 2,075 SF

CAMPUS PARK
9TH AVE S & S 344TH ST | FEDERAL WAY, WA



UNIT 305



900 SW 16th St, Ste 100
Renton, WA 98057
(206) 244-0770
www.andoverco.com

EXCLUSIVELY OFFERED BY:

Arne Svendsen
(206) 947-2885
asvendsen@andoverco.com

Campus Park is owned and operated by:



The information contained herein has been obtained from reliable sources, but is not guaranteed. A prospective buyer/tenant should verify each item relating to this property and all information contained herein.