

FOR LEASE

LACEY TOWN SQUARE

4520 Lacey Blvd SE , Lacey , WA 98503



PRIMELOCATIONS.COM | 4160 6TH AVE. SE | LACEY, WA 98503



JONI BAKER
joni@primelocations.com
360.943.9922

FOR LEASE

LACEY TOWN SQUARE

4520 LACEY BLVD SE , LACEY , WA 98503

Executive Summary



PROPERTY SUMMARY

Available SF:	1,089 - 4,810 SF
Lease Rate:	\$16.00 SF/month (NNN)
Lot Size:	3.81 Acres
Building Size:	56,946 SF
Year Built:	1967
Zoning:	Central Business District 5
Market:	Lacey
Cross Streets:	College Street and Pacific Avenue

PROPERTY OVERVIEW

Popular Walgreens anchored shopping center in the heart of Lacey. Located at the intersection of College Street and Lacey Blvd.

PROPERTY HIGHLIGHTS

- Tenants include: Walgreens, Papa Johns, Charter College, South Sound Bank, Harbor Freight Tools, Rodda Paint, Fastenal and Miso.
- Nearby national tenants include: Starbucks, H & R Block, Fred Meyer, Office Depot, Target, Saint Martin's University, South Puget Sound Community College and KFC.
- Highly traveled intersections and round-a-bouts
- Ample parking
- Excellent retail synergy
- Great visibility and access
- Easy I5 access

FOR LEASE

LACEY TOWN SQUARE

4520 LACEY BLVD SE , LACEY , WA 98503

Available Spaces

Lease Rate: \$16.00 SF/MONTH (NNN)

Total Space 11,604 SF

Lease Type: NNN

Lease Term: Negotiable

SPACE	SPACE USE	LEASE RATE	LEASE TYPE	SIZE (SF)	TERM	COMMENTS
Suite 9	Strip Center	\$16.00 SF/MONTH	NNN	1,984 SF	Negotiable	
Suite 14	Strip Center	\$16.00 SF/MONTH	NNN	1,331 SF	Negotiable	
Suite 15	Strip Center	\$16.00 SF/MONTH	NNN	1,089 SF	Negotiable	
Suite 16	Strip Center	\$16.00 SF/MONTH	NNN	2,390 SF	Negotiable	
Suites 14, 15, & 16	Strip Center	\$16.00 SF/MONTH	NNN	4,810 SF	Negotiable	

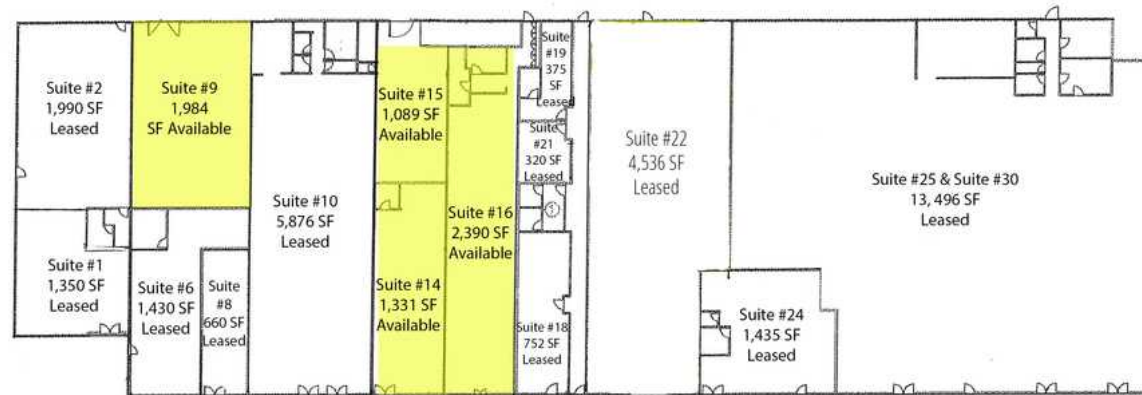
FOR LEASE

LACEY TOWN SQUARE

4520 LACEY BLVD SE, LACEY, WA 98503

Site Plan

Lacey Town Square



FOR LEASE

LACEY TOWN SQUARE

4520 LACEY BLVD SE , LACEY , WA 98503

Additional Photos

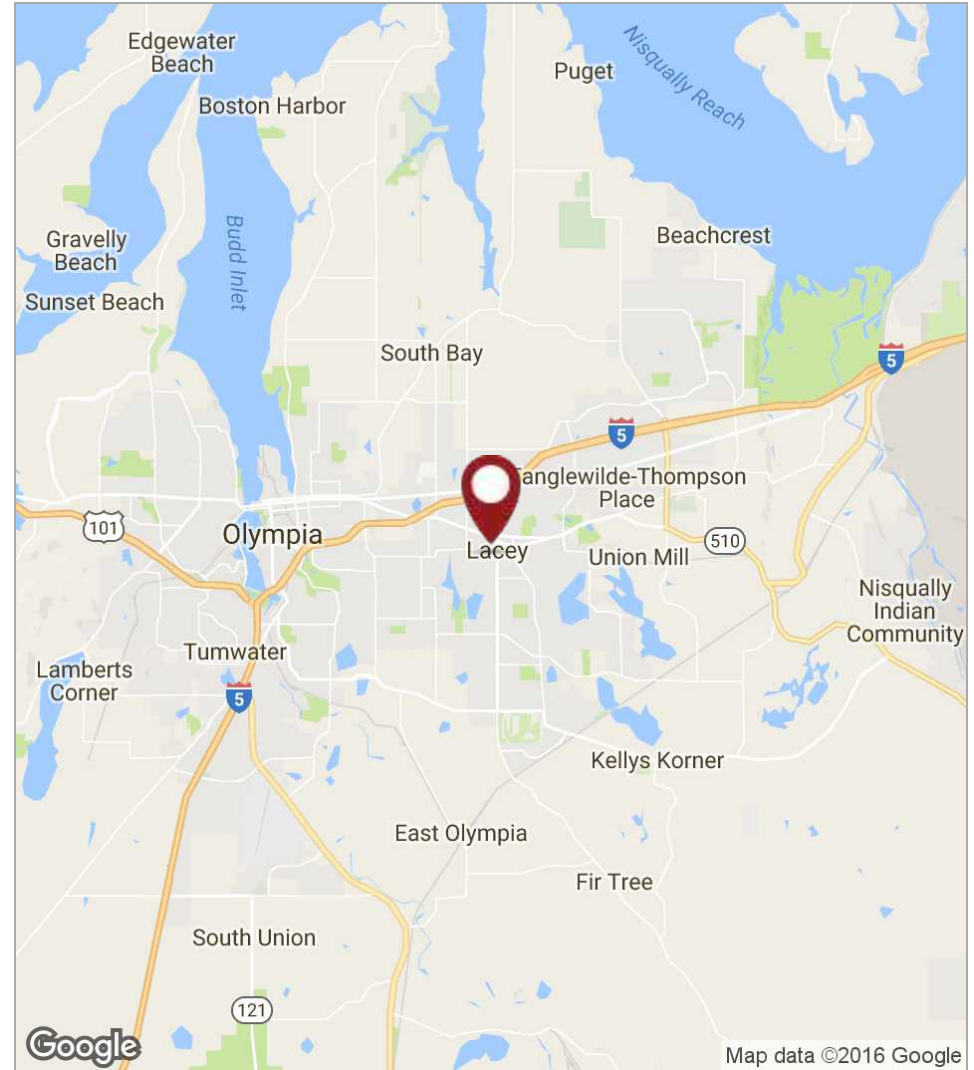
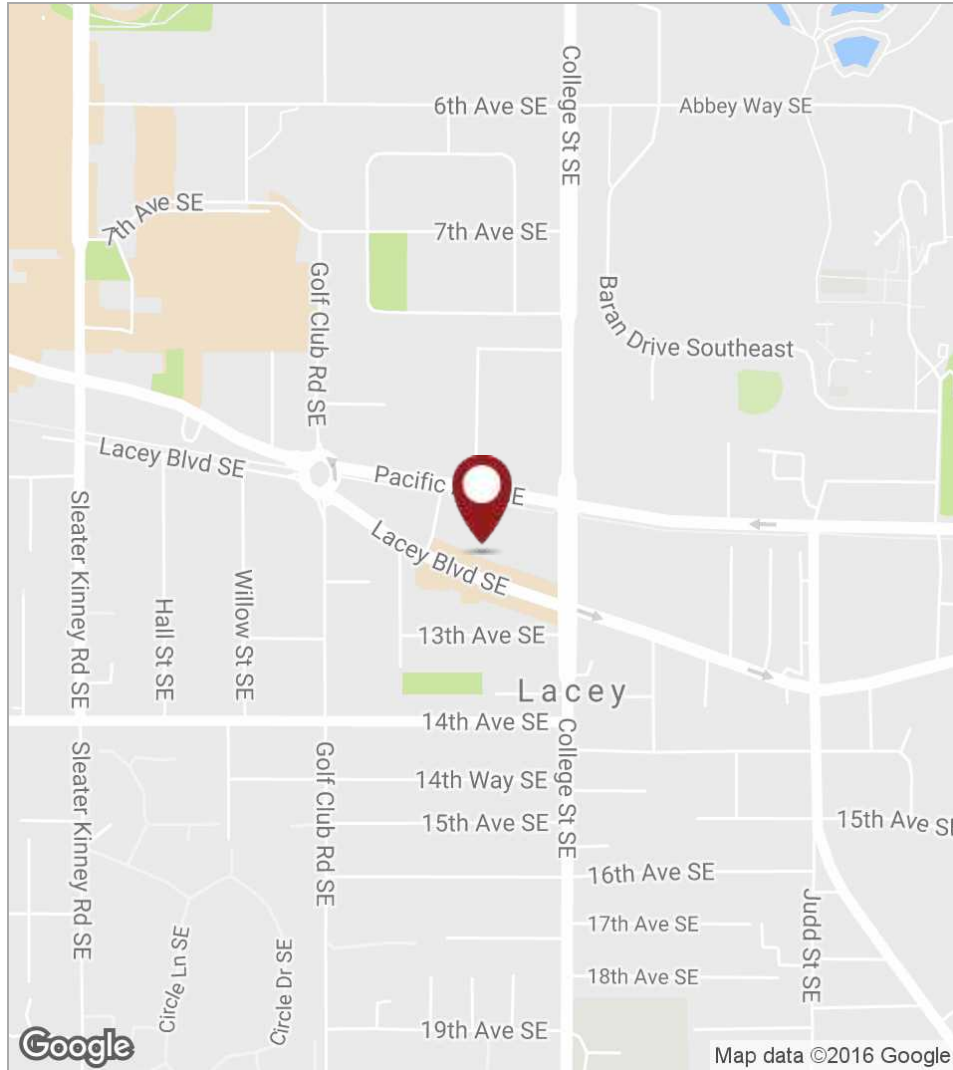


FOR LEASE

LACEY TOWN SQUARE

4520 LACEY BLVD SE, LACEY, WA 98503

Location Maps



FOR LEASE

LACEY TOWN SQUARE

4520 LACEY BLVD SE , LACEY , WA 98503

Demographics Map



	1 Mile	3 Miles	5 Miles
Total Population	8,403	69,819	137,188
Population Density	2,675	2,469	1,747
Median Age	41.2	39.2	38.6
Median Age (Male)	39.3	37.0	37.1
Median Age (Female)	43.1	41.2	40.1
Total Households	3,965	30,199	56,983
# of Persons Per HH	2.1	2.3	2.4
Average HH Income	\$55,165	\$64,771	\$72,262
Average House Value	\$214,639	\$241,391	\$273,479

* Demographic data derived from 2010 US Census

FOR LEASE

LACEY TOWN SQUARE

4520 LACEY BLVD SE, LACEY, WA 98503

Retailer Map



FOR LEASE

LACEY TOWN SQUARE

4520 LACEY BLVD SE , LACEY , WA 98503

Disclaimer

Confidentiality & Disclaimer

All materials and information received or derived from Prime Locations its directors, officers, agents, advisors, affiliates and/or any third party sources are provided without representation or warranty as to completeness , veracity, or accuracy, condition of the property, compliance or lack of compliance with applicable governmental requirements, developability or suitability, financial performance of the property, projected financial performance of the property for any party's intended use or any and all other matters.

Neither Prime Locations its directors, officers, agents, advisors, or affiliates makes any representation or warranty, express or implied, as to accuracy or completeness of the any materials or information provided, derived, or received. Materials and information from any source, whether written or verbal, that may be furnished for review are not a substitute for a party's active conduct of its own due diligence to determine these and other matters of significance to such party. Prime Locations will not investigate or verify any such matters or conduct due diligence for a party unless otherwise agreed in writing.

EACH PARTY SHALL CONDUCT ITS OWN INDEPENDENT INVESTIGATION AND DUE DILIGENCE.

Any party contemplating or under contract or in escrow for a transaction is urged to verify all information and to conduct their own inspections and investigations including through appropriate third party independent professionals selected by such party. All financial data should be verified by the party including by obtaining and reading applicable documents and reports and consulting appropriate independent professionals. Prime Locations makes no warranties and/or representations regarding the veracity, completeness, or relevance of any financial data or assumptions. Prime Locations does not serve as a financial advisor to any party regarding any proposed transaction. All data and assumptions regarding financial performance, including that used for financial modeling purposes, may differ from actual data or performance. Any estimates of market rents and/or projected rents that may be provided to a party do not necessarily mean that rents can be established at or increased to that level. Parties must evaluate any applicable contractual and governmental limitations as well as market conditions, vacancy factors and other issues in order to determine rents from or for the property.

Legal questions should be discussed by the party with an attorney. Tax questions should be discussed by the party with a certified public accountant or tax attorney. Title questions should be discussed by the party with a title officer or attorney. Questions regarding the condition of the property and whether the property complies with applicable governmental requirements should be discussed by the party with appropriate engineers, architects, contractors, other consultants and governmental agencies. All properties and services are marketed by Prime Locations in compliance with all applicable fair housing and equal opportunity laws.

