

±4,618 SF

324 Campus Lane, Suite F

Fairfield, CA | FAIRFIELD CORPORATE COMMONS



OFFICE / FLEX FOR LEASE

AVAILABLE:

±4,618 SF

USES:

Flex, Office

LEASE RATE:

CONTACT BROKER

LOCATION:

Located in the Fairfield Corporate Commons professional business park, adjacent to Solano College, close to restaurants, coffee, hotel, banking, dry cleaning, grocery, with easy access to and from I-80, I-680, & Highway 12.

SUMMARY:

Highly improved campus style professional business park setting.

Information contained herein has been obtained from the owner or from other sources deemed reliable. We have no reason to doubt its accuracy but regret we cannot guarantee it. All information is subject to change or withdrawal without notice.



DAKIN & DAKIN
COMMERCIAL REAL ESTATE SERVICES

619 Buck Avenue, Suite B
Vacaville, CA 95688
707.200.2097 Main
www.DakinandDakin.com

Eric Dakin
Managing Broker
CA License No. 01816124
707.392.5122 Direct
eric@dakinanddakin.com

Deva Dakin
Senior Associate
CA License No. 02003938
707.392.5115 Direct
deva@dakinanddakin.com

±4,618 SF

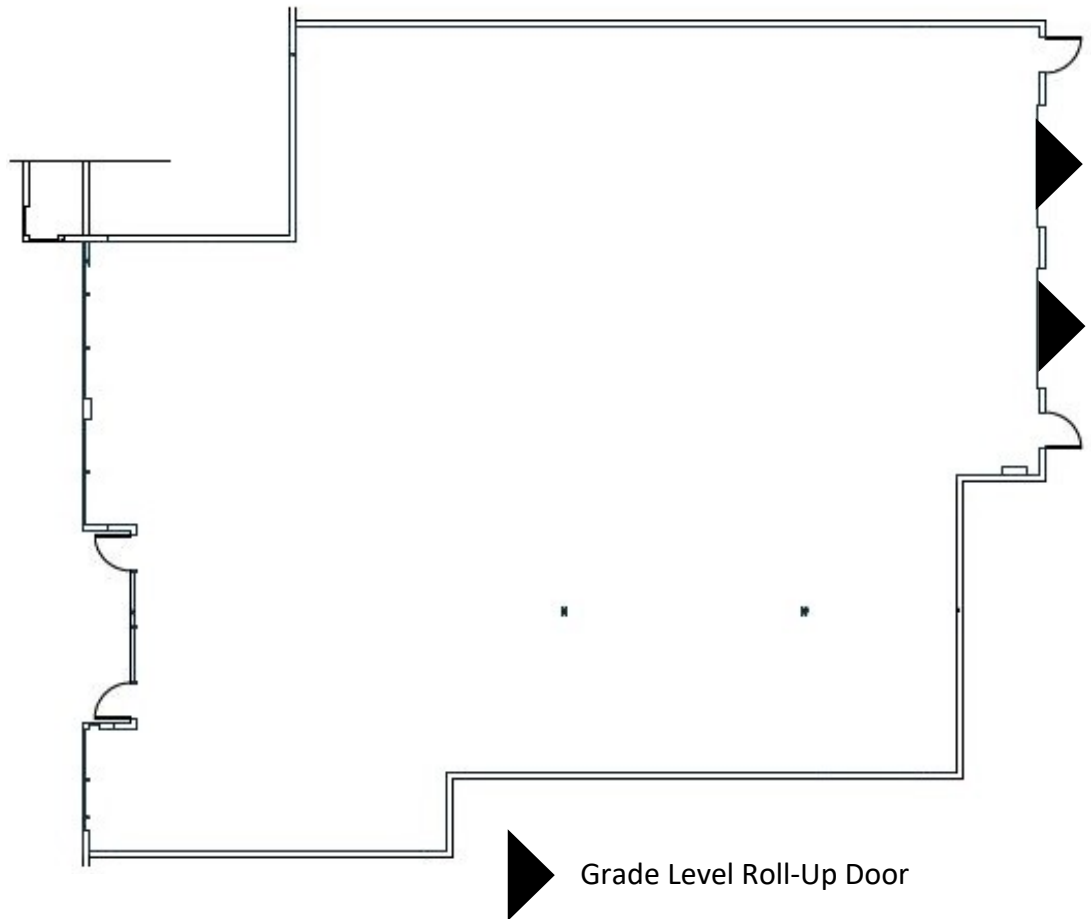
324 Campus Lane, Suite F

Fairfield, CA | FAIRFIELD CORPORATE COMMONS

SPACE CHARACTERISTICS:

- Glass line store front
- Office-to-suit
- Current “shell” condition
- Two (2) rear loaded grade doors
- ±15' clear height
- 5/1,000 sf parking ratio

Floor to ceiling glass line allows for plenty of natural light throughout the space. Four entry doors allow for flexible layouts.



DAKIN & DAKIN
COMMERCIAL REAL ESTATE SERVICES

619 Buck Avenue, Suite B
Vacaville, CA 95688
707.200.2097 Main
www.DakinandDakin.com

Eric Dakin
Managing Broker
CA License No. 01816124
707.392.5122 Direct
eric@dakinanddakinc.com

Deva Dakin
Senior Associate
CA License No. 02003938
707.392.5115 Direct
deva@dakinanddakinc.com