



2 WEST
9 FOOTHILL
9 BLVD

PROPERTY HIGHLIGHTS

- 36,870 square foot multi-tenant office building
- Move-in ready suite - Now Available
- Foothill Boulevard exposure and building signage opportunities
- Abundant surface and covered parking
- Walking distance to numerous restaurants, amenities and transit lines
- Recently remodeled common areas

AVAILABILITY

SUITE	SIZE (RSF)	RATE
-------	------------	------

112	2,952	\$1.65 MG
-----	-------	-----------





**2 WEST
9 Foothill
9 BLVD**



BUILDING FEATURES

Address: 299 West Foothill Blvd
Upland, CA 91786

Year Built: 1986/remodeled lobby
& corridor 2018

Square Feet: ±36,870 SF

Elevator: Yes

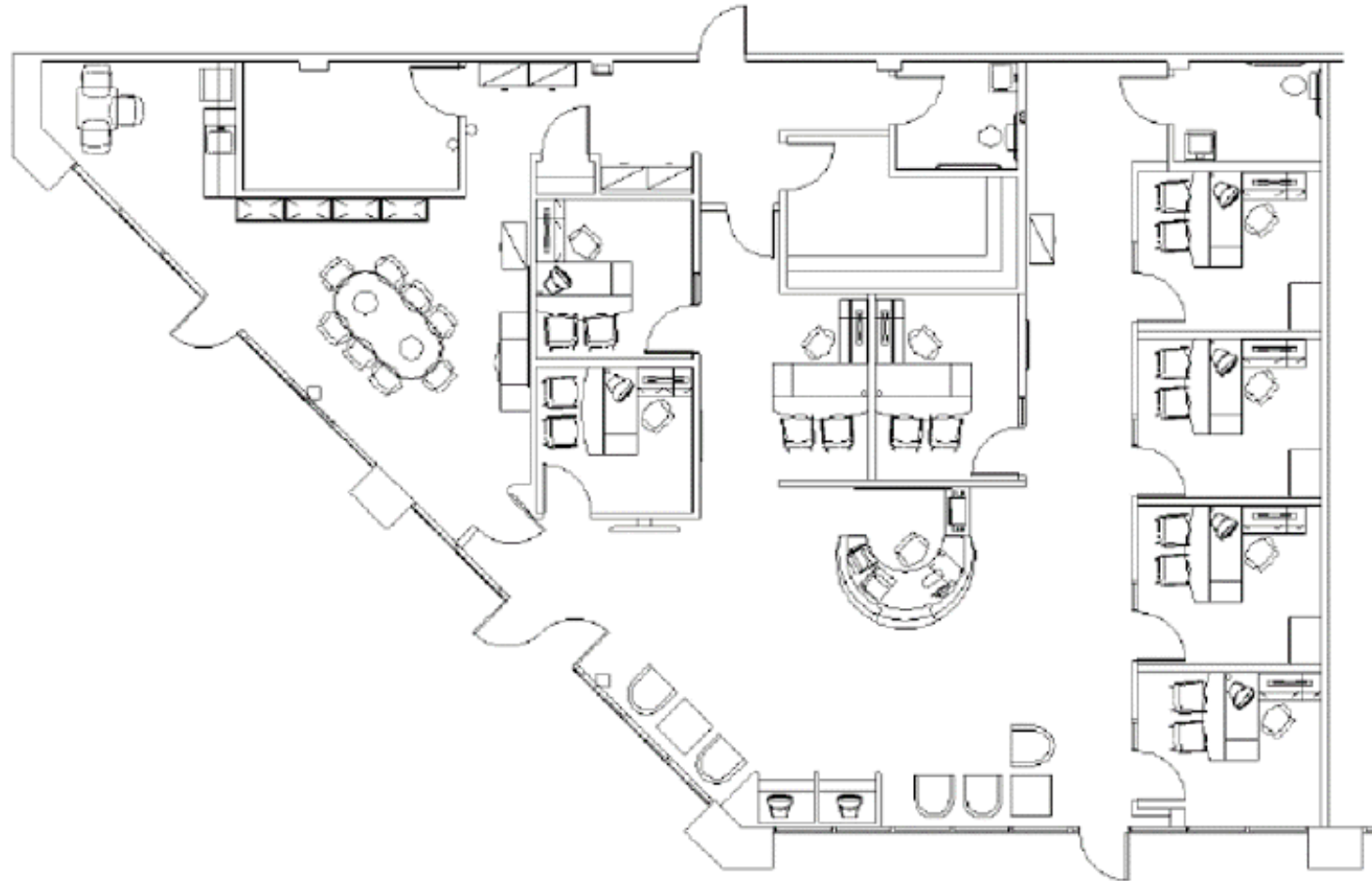
Sprinklers: Yes

Parking Ratio: 4.6:1,000 Covered &
Reserved Spaces

FLOOR PLAN

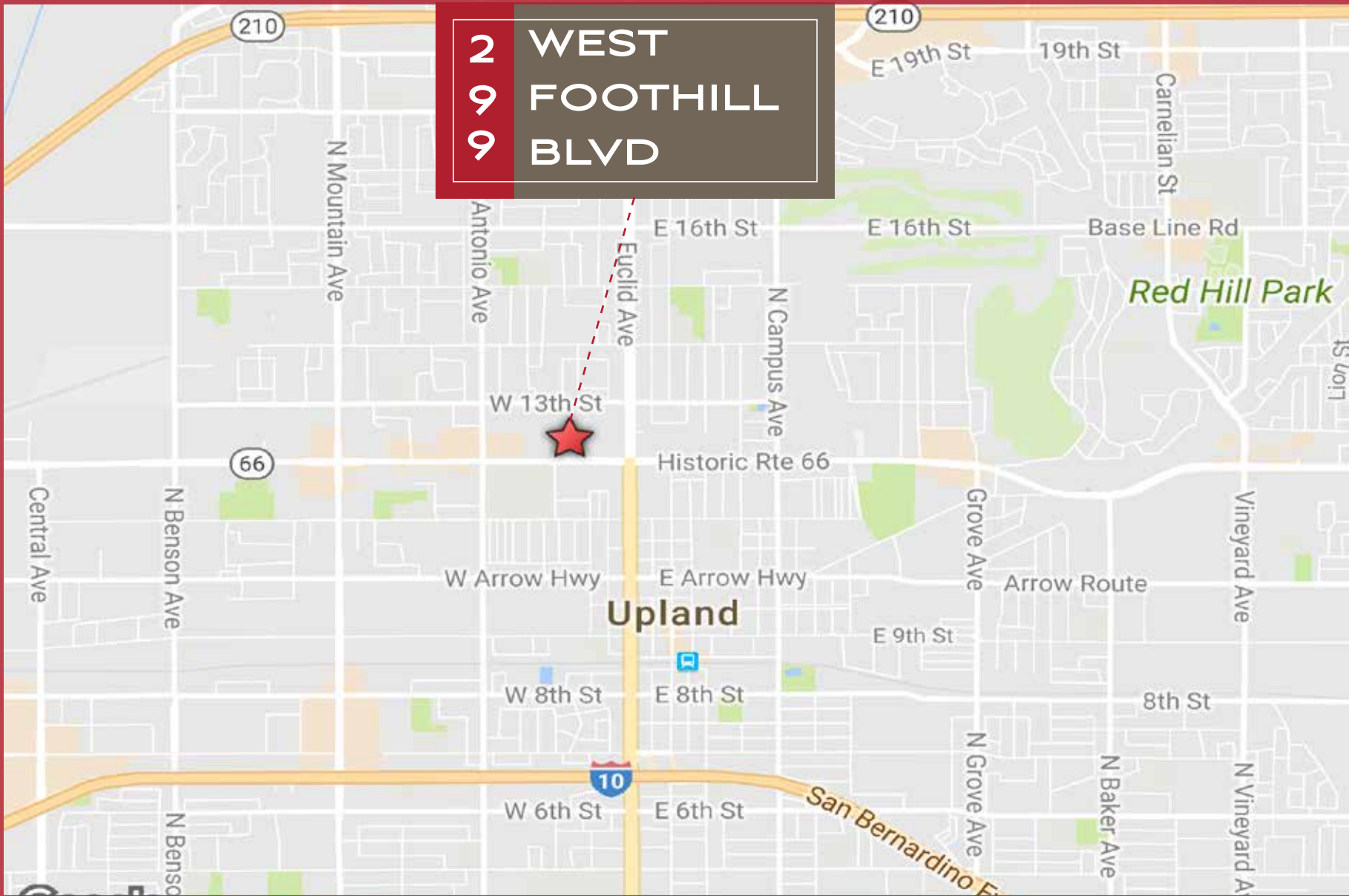
SUITE 112 | **2,952 RSF**

AVAILABLE JANUARY 1, 2019



2
9
9

WEST
FOOTHILL
BLVD



Map data ©2018 Google

2 WEST
9 FOOTHILL
9 BLVD



CONTACT

JOHN BIBEAU
Vice President
+1 909 418 2052
john.bibeau@cbre.com
Lic. 01250130

STEVEN SAUNDERS
Senior Associate
+1 909 418 2006
steven.saunders@cbre.com
Lic. 01932948

CBRE, INC.
4141 Inland Empire Blvd.
Suite 100
Ontario, CA 91764

© 2018 CBRE, Inc. All rights reserved. This information has been obtained from sources believed reliable, but has not been verified for accuracy or completeness. Any projections, opinions, or estimates are subject to uncertainty. The information may not represent the current or future performance of the property. You and your advisors should conduct a careful, independent investigation of the property and verify all information. Any reliance on this information is solely at your own risk. CBRE and the CBRE logo are service marks of CBRE, Inc. and/or its affiliated or related companies in the United States and other countries. All other marks displayed on this document are the property of their respective owners. Photos herein are the property of their respective owners and use of these images without the express written consent of the owner is prohibited.

CBRE

CBRE, INC
Broker Lic. 00409987