

**FOR LEASE**

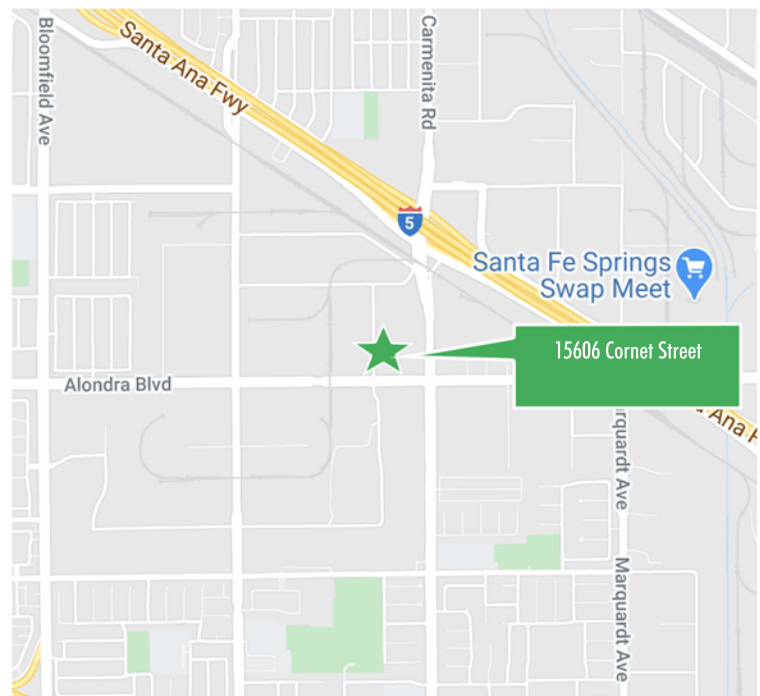
**+/- 8,829 SF**

15606 CORNET STREET / SANTA FE SPRINGS, CA

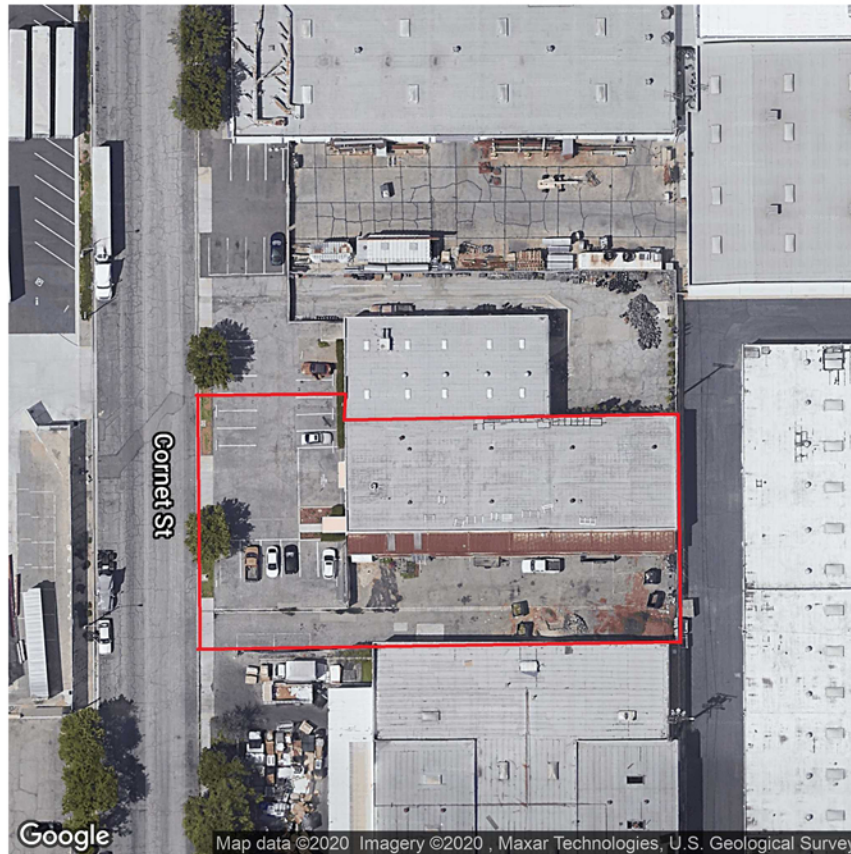


## **BUILDING FEATURES**

- + 8,829 SF
- + 4 GL Doors
- + Central Mid-Counties Location
- + Easy Access to 5, 91, and 605 Freeways
- + 9,000 SF Fenced and Paved Yard
- + 14'-16' Clear Height
- + 15 Parking Spaces
- + Updated Offices



# SITE PLAN



## PLEASE CONTACT:

### CHRIS EHRLICH

Vice President  
(562) 968-1160  
chris.ehrlich@cbre.com  
Lic. 00409987

### GAVIN WUERFEL

Associate  
(714) 747-7316  
Gavin.Wuerfel@cbre.com  
Lic. 02057442

© 2019 CBRE Inc. All rights reserved. This information has been obtained from sources believed to be reliable, but has not been verified for accuracy or completeness. You should conduct a careful, independent investigation of the property and verify all information. Any reliance on this information is solely at your own risk. CBRE and the CBRE logo are service marks of CBRE, Inc. All other marks displayed on this document are property of their respective owners, and the use of such logos does not imply any affiliation with or endorsement of CBRE. Photos herein are the property of their respective owners. Use of these images without the express written consent of the owner is prohibited.