

# Westlake Landmark

30870 Russell Ranch Road  
Westlake Village, California 91362



## Property highlights & amenities

- Entire 3<sup>rd</sup> floor available
- **40,456** r.s.f. available - last remaining available floor
- **\$2.95** per square foot, Full Service Gross
- Efficient floor plate
- 4.25:1000 parking available at no charge
- Building top signage available
- Panoramic views of surrounding Santa Monica and Santa Susana Mountains
- Excellent 101 Freeway visibility and identity
- Extensive executive housing and recreational amenities nearby
- Four Seasons Hotel & Spa of Westlake Village
- California Health & Longevity Institute
- Wolfgang Puck, L.A. Bistro, Residence Inn by Marriott and Westlake Village Marketplace within walking distance
- The Shoppes at Westlake Village opening July 2014
- For more information, visit our website: [www.WestlakeLandmark.com](http://www.WestlakeLandmark.com)

### Contact

#### Dan Sanchez

Executive Vice President  
+1 661 964 6211  
dan.sanchez@am.jll.com  
License 01308273

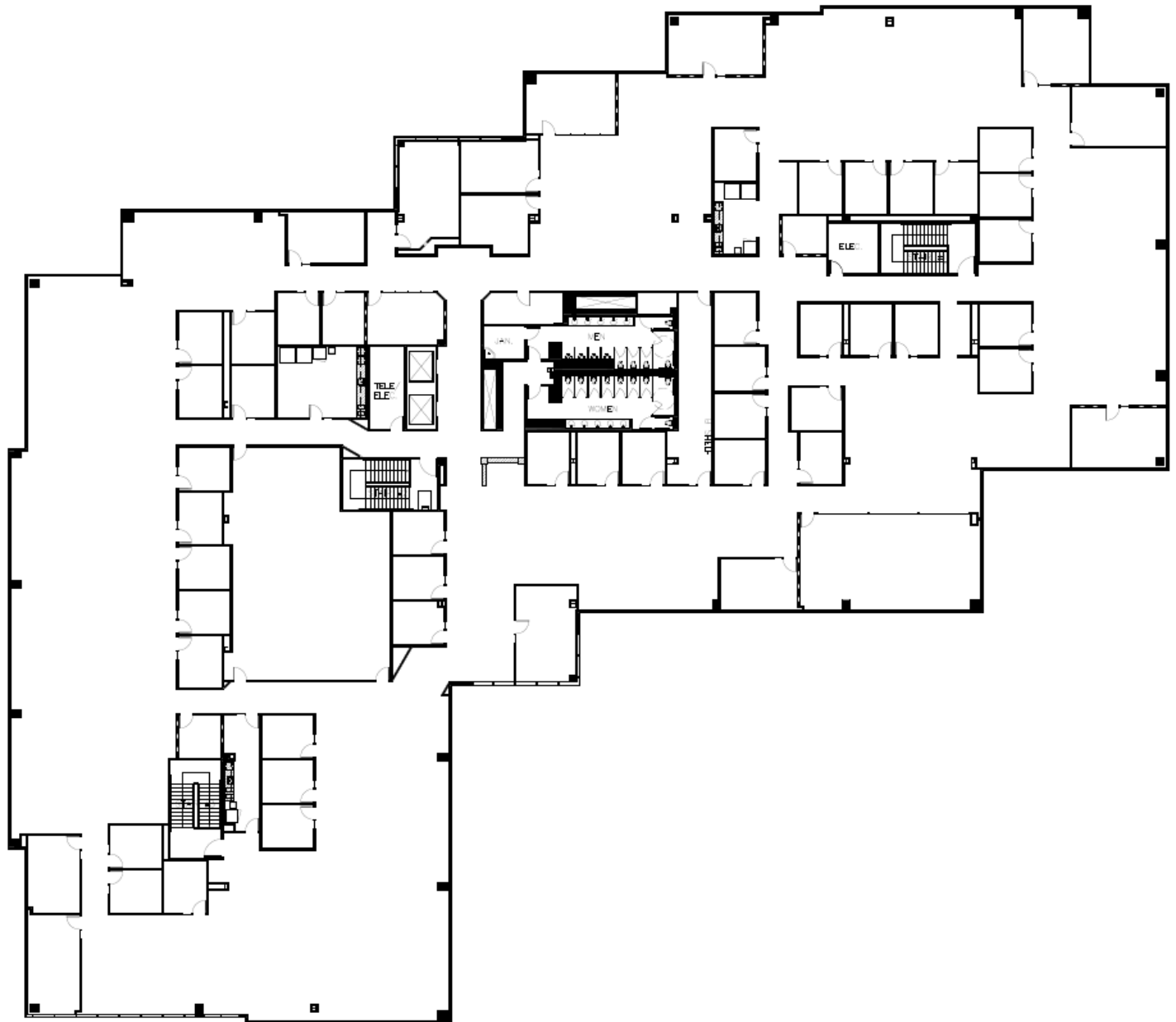
# 30870 Russell Ranch Road - Building II

## Westlake Village, California 91362

### Entire 3<sup>rd</sup> Floor Available for Lease

---

30870 Russell Ranch Road  
3rd Floor – 40,456 square feet:



#### Contact

**Dan Sanchez**

Executive Vice President

+1 661 964 6211

[dan.sanchez@am.jll.com](mailto:dan.sanchez@am.jll.com)

License 01308273