



OFFICE or RETAIL
± 80,000 SF Parcel
For Sale, Ground
Lease or BTS

NEW SHOPPING CENTER

Development



Plaza West Hills | 24525 Copper Hill Dr. Santa Clarita, CA

Austin Bettar
Senior Vice President
License #0808334
Tel +1 310 694 3194
austin.bettar@am.jll.com

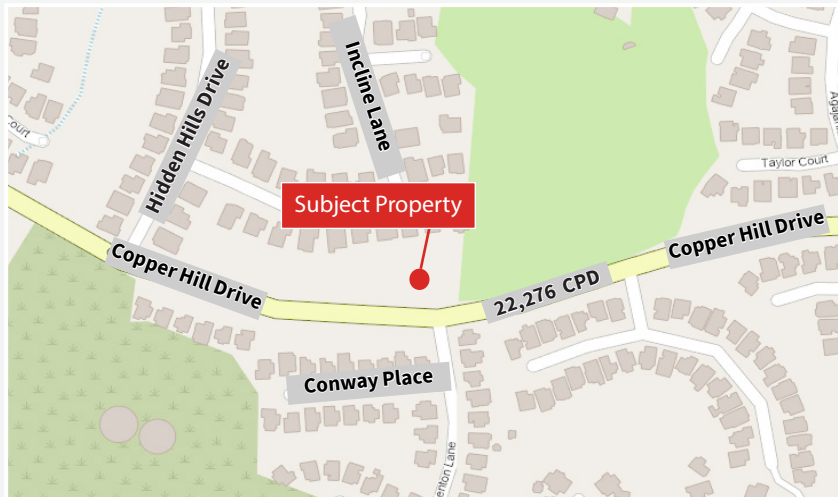
Ken Shishido
Senior Vice President
License #00856964
Tel +1 310 694 3181
ken.shishido@am.jll.com

us.jll.com/retail

Property Highlights

Plaza West Hills | Santa Clarita

- ±80,000 SF parcel for sale, ground lease, or BTS
- Perfect for office or retail - approved for 17,000 sf office space
- Fastest growing part of Santa Clarita with over 2,000 new homes nearby
- Ideal positioning on major street with signalized access and street signage available
- Join Starbucks, Taco Bell, Shell Gas Station, and The Learning Experience



AREA RETAILERS

Walmart



DEMOGRAPHICS

1 mile ▼

2 miles ▼

3 miles ▼



12,448

Total Population

48,592

Total Population

92,956

Total Population



2.85

Ave. Household Size

3.00

Ave. Household Size

2.94

Ave. Household Size



\$164,171

Ave. HH Income

\$155,890

Ave. HH Income

\$147,443

Ave. HH Income



\$649,960

Median Home Value

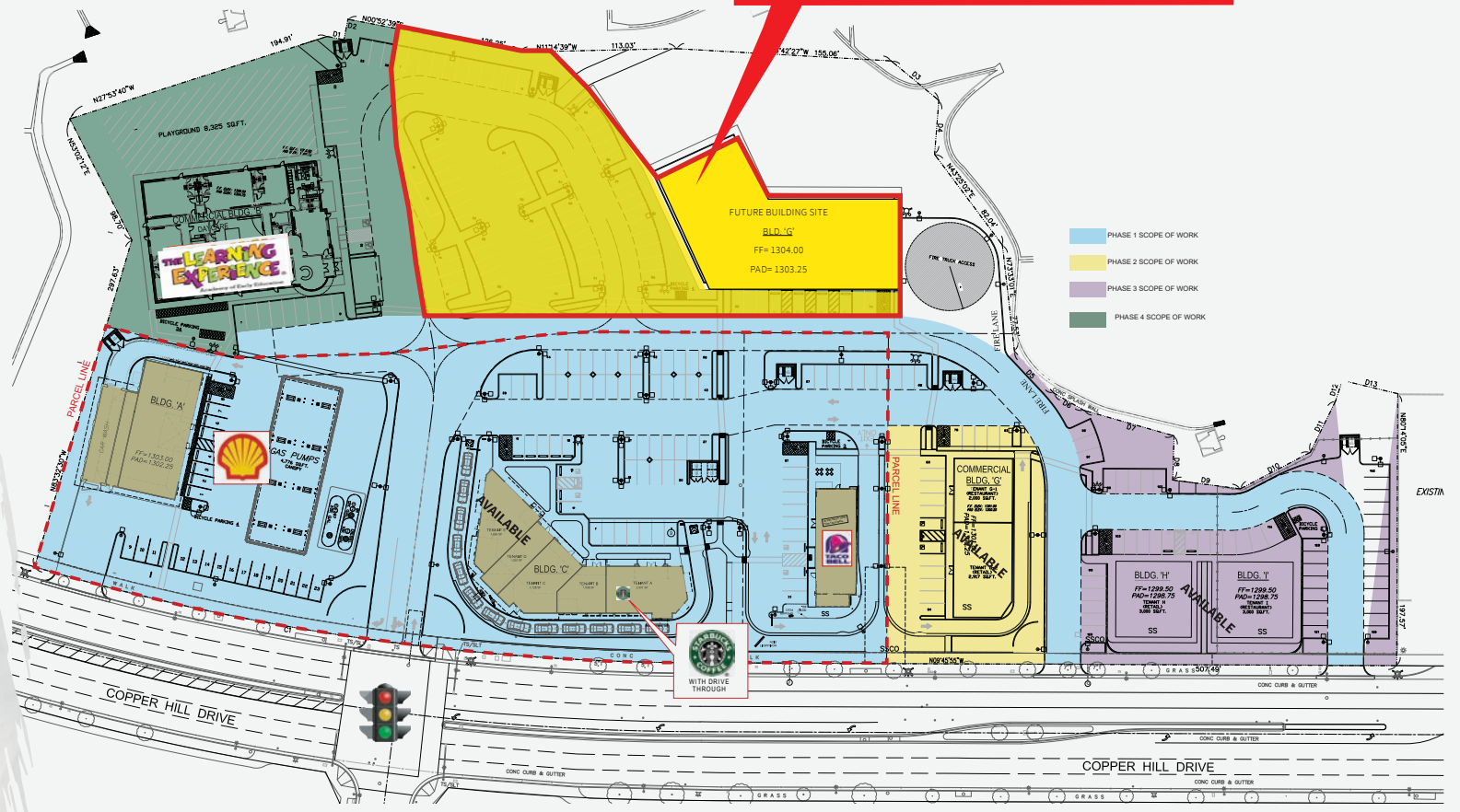
\$622,075

Median Home Value

\$604,690

Median Home Value

**±80,000 SF LAND PARCEL
AVAILABLE FOR SALE, GROUND
LEASE, OR BUILD-TO-SUIT WITH
STREET SIGNAGE**

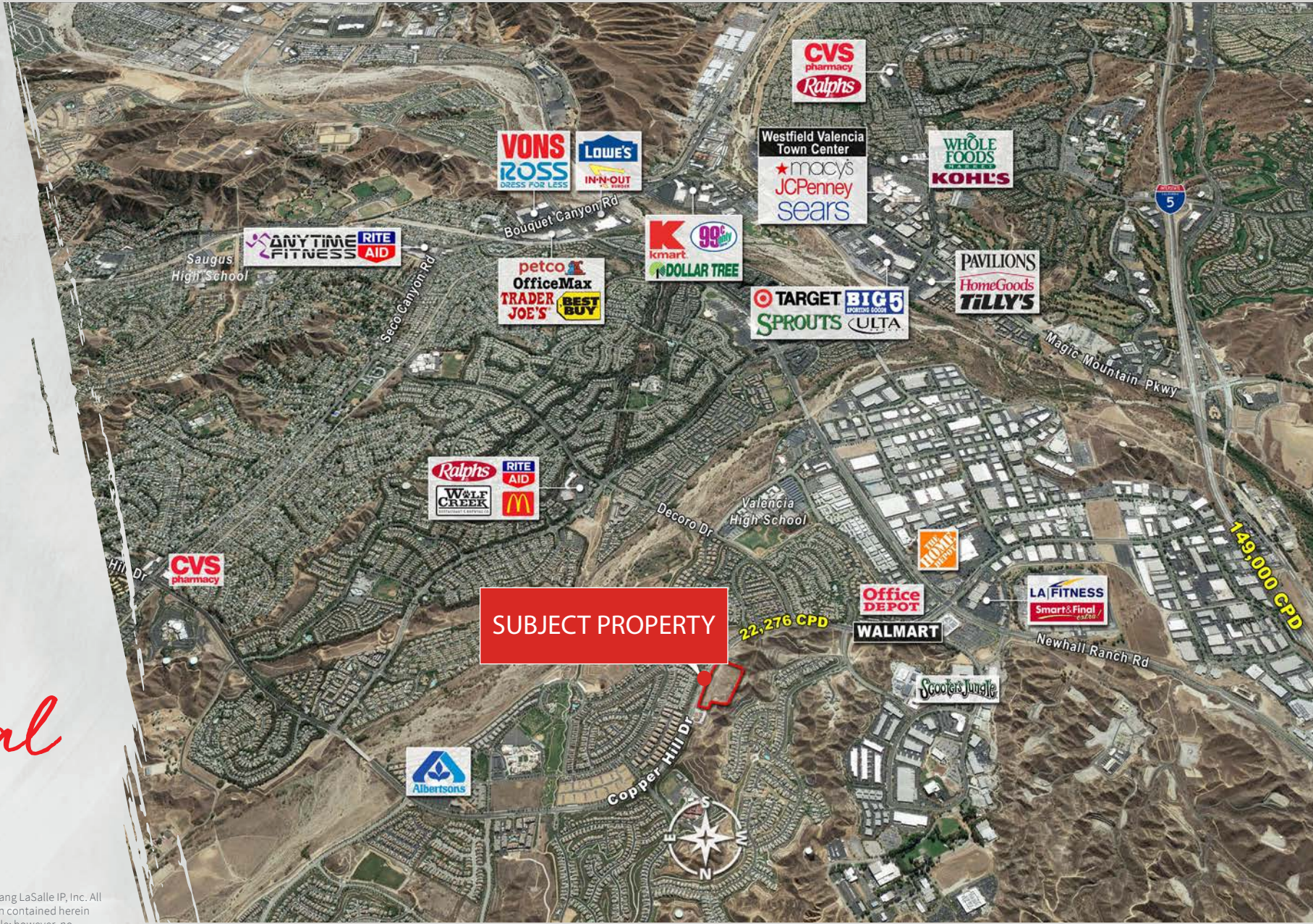


Site Plan

DISCLAIMER | © 2019 Jones Lang LaSalle IP, Inc. All rights reserved. All information contained herein is from sources deemed reliable; however, no representation or warranty is made to the accuracy thereof.



Aerial



DISCLAIMER | © 2019 Jones Lang LaSalle IP, Inc. All rights reserved. All information contained herein is from sources deemed reliable; however, no representation or warranty is made to the accuracy thereof.



*Achieve
Ambitions*

us.jll.com/retail

Austin Bettar

Senior Vice President

License #0808334

Tel +1 310 694 3194

austin.bettar@am.jll.com

Ken Shishido

Senior Vice President

License #00856964

Tel +1 310 694 3181

ken.shishido@am.jll.com