

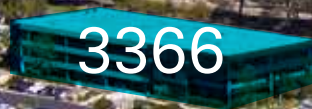


UC San Diego

LINK | *Torrey Pines*
UC San Diego Innovation Hub



3344



3366



3377



10350



3333

LINK TODAY WITH YESTERDAY

Perched above the Pacific Ocean and nestled along the 10th hole of the Torrey Pines Golf Course, Link boasts panoramic views, awe-inspiring sunsets and cool ocean breezes. Come be a part of this community rich with history, overlooking a famous course built on the site of Camp Callan, a U.S. Army installation during World War II.

Where great minds come to think

This five building campus is the ideal location for companies large and small looking to relocate to the exclusive corporate community of Torrey Pines. Link fosters an employee focused environment for life science, medical device, technology, software, and research companies looking to hire and retain the best talent possible.

A woman with long dark hair is wearing a white and black VR headset. She has her mouth open in a surprised or excited expression and her hands are raised in front of her. The background is a soft, out-of-focus light blue and purple, with several bright, colorful light trails (yellow, green, blue, and purple) streaking across the scene, creating a sense of motion and digital immersion.

LINKTO INNOVATION

Are you a venture capital firm or a virtual biotech company? Link offers flexible move-in ready office suites for any company seeking an environment that inspires creativity, connection, and ideas.



\$458M

Did you know?

Torrey Pines biotech and healthcare companies have received nearly half a billion in VC funding since 2017. (\$250 million of this was granted in 2018)

Explore. Discover. Change

Whether you are in need of move in ready or customized office space, we've got you covered. We have offices for every company stage, from large full-building tenants to small incubator offices.

Be heard and be seen.

Join the exclusive Torrey Pines community of UCSD, West Health, Sanford Burnham, J. Craig Venter, Lowy Research Institute, General Atomics, Johnson & Johnson, and Pfizer.





SORRENTO
VALLEY



SBP

© Johnson & Johnson

SBP



VERTEX

TORREY PINES

LINK | Torrey Pines

UC San Diego Innovation Hub

Gary & Mary
West Wireless Health
Institute™

coNKwest

astellas

Takeda

GENERAL ATOMICS

LabCorp

Takeda

**ThermoFisher
SCIENTIFIC**



SALK INSTITUTE
FOR BIOLOGICAL STUDIES

UC San Diego

Surrounding neighbors

Calibr	Sequenom
Synthetic Genomics	West Wireless Health
BD	Salk Institute
TSRI	Astellas
Celgene	Takeda
The Medicines Company	General Atomics
SBP	Pacira
TSRI	Regulus
Vertex	
Johnson & Johnson	
Novartis	
CoNKwest	
BASF	
aTyr Pharma	

LINKTO INNOVATION





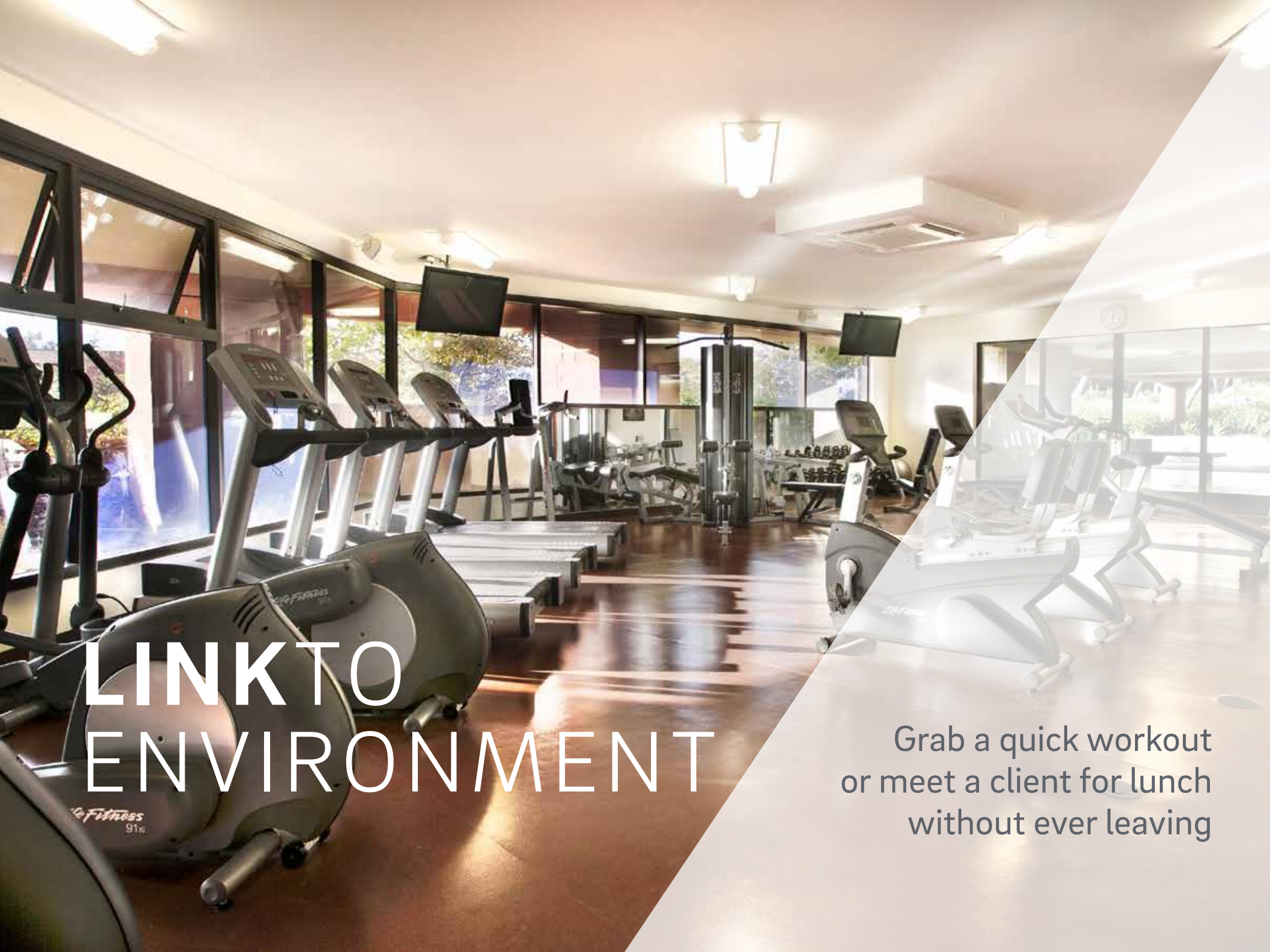
Inspire creativity and connect

on campus without ever needing to leave. Enjoy our future on-site cafe, gym, shower and lockers, impromptu gathering spaces, and incredible views overlooking the Torrey Pines Golf Course and ocean.

Golf, hike, surf, paddle, run and glide... We offer the quickest access to San Diego's best outdoor activities without wasting extra time.

LINKTO ENVIRONMENT





LINK TO ENVIRONMENT

Grab a quick workout
or meet a client for lunch
without ever leaving

KEY PINES *Cafe*

Future on-site cafe concept





LINK TO CHANGE

Are you looking for concrete floors, expansive window lines and modern finishes? Link will change the way you work with just the right workspace.

Availability Summary

Building	RSF	Details
3344 – Suite 100	9,090 RSF	High-end office space with ocean and golf course views. Private balcony.
3344 – Suite 200	12,887 RSF	High-end office space with ocean and golf course views. Private balcony.
3344 – Suite 100 & 200*	21,977 RSF (combined*)	High-end office space with ocean and golf course views. Private balconies.
3366 – Suite 120	3,100 RSF	New creative spec suite with concrete ceilings & floors, and upgraded finishes. Delivering 11/2019.
3366 – Suite 225	2,377 RSF	Creative office build out with ocean views. Exposed ceilings and floor to ceiling window line. Delivering 6/2020.
3366 – Suite 310	7,841 RSF	Dense private office build-out. Ocean and golf course views.
3377 – Suite 150	4,000 to 9,095 RSF	Shell space. Potential creative space. Peak ocean views.

↑ West

3344

West facing Torrey Pines Golf Course & Ocean



3344 N. Torrey Pines Ct. Suite 100

- 9,090 s.f. (+ 2nd floor = 21,977 s.f.)
- Ocean and golf course views
- Beautiful, high-end Class A office space with a private balcony
- Lots of glass and upgraded finishes
- 13 offices, boardroom, kitchen, support rooms and open space

↑ West

3344

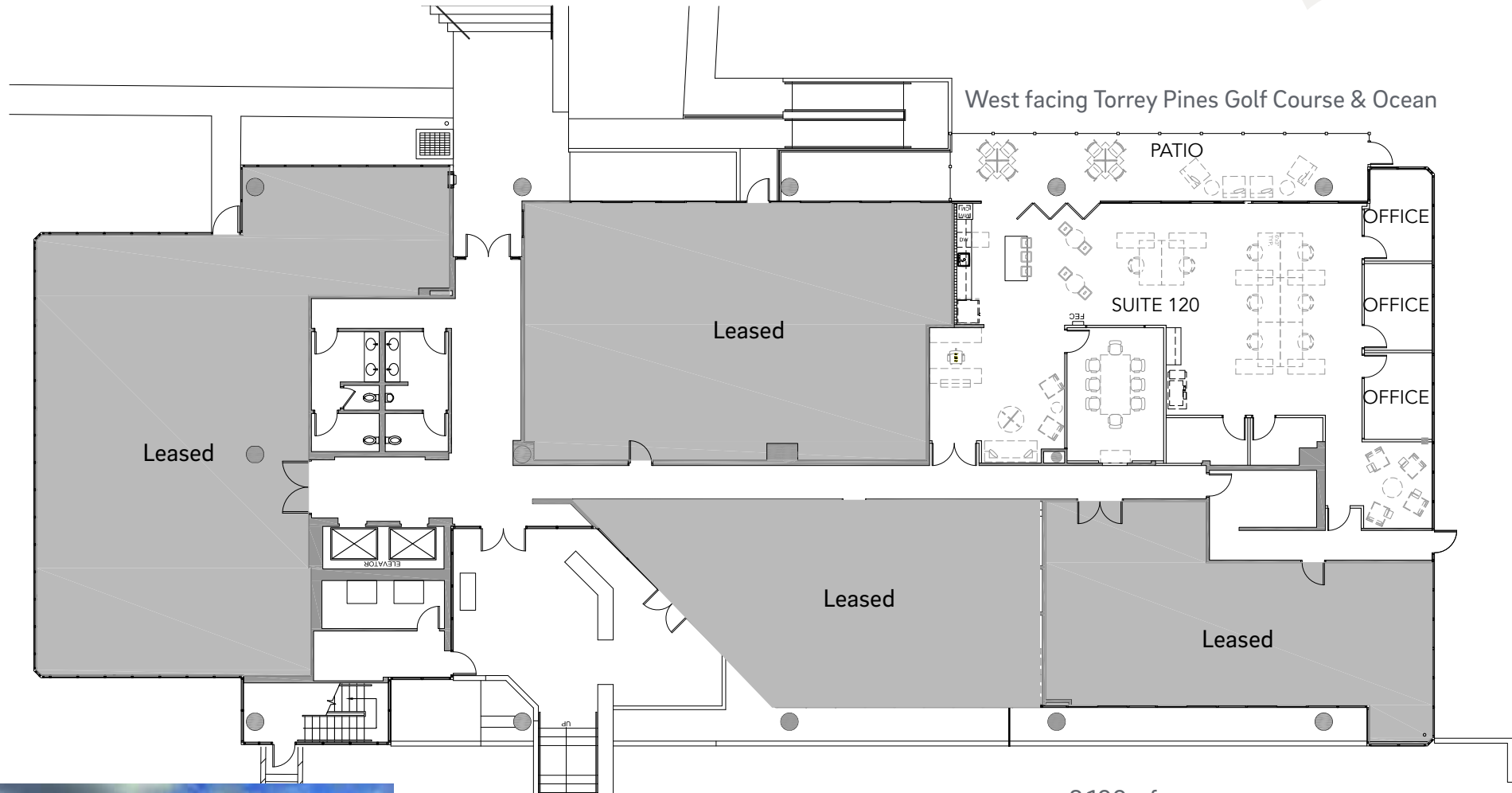
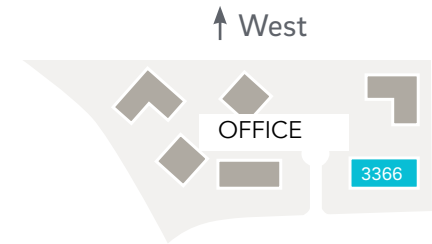
West facing Torrey Pines Golf Course & Ocean



3344 N. Torrey Pines Ct. Suite 200

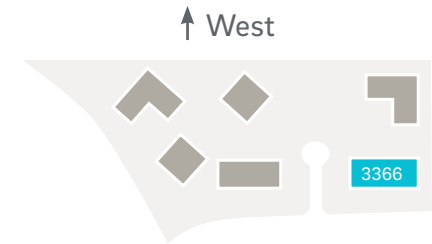
- 12,887 s.f. (+ 1st floor = 21,977 s.f.)
- Ocean and golf course views
- Beautiful, high-end Class A office space with a private balcony
- Lots of glass and upgraded finishes
- 27 offices, boardroom, kitchen, support rooms and open space

3366 N. Torrey Pines Ct. Suite 120

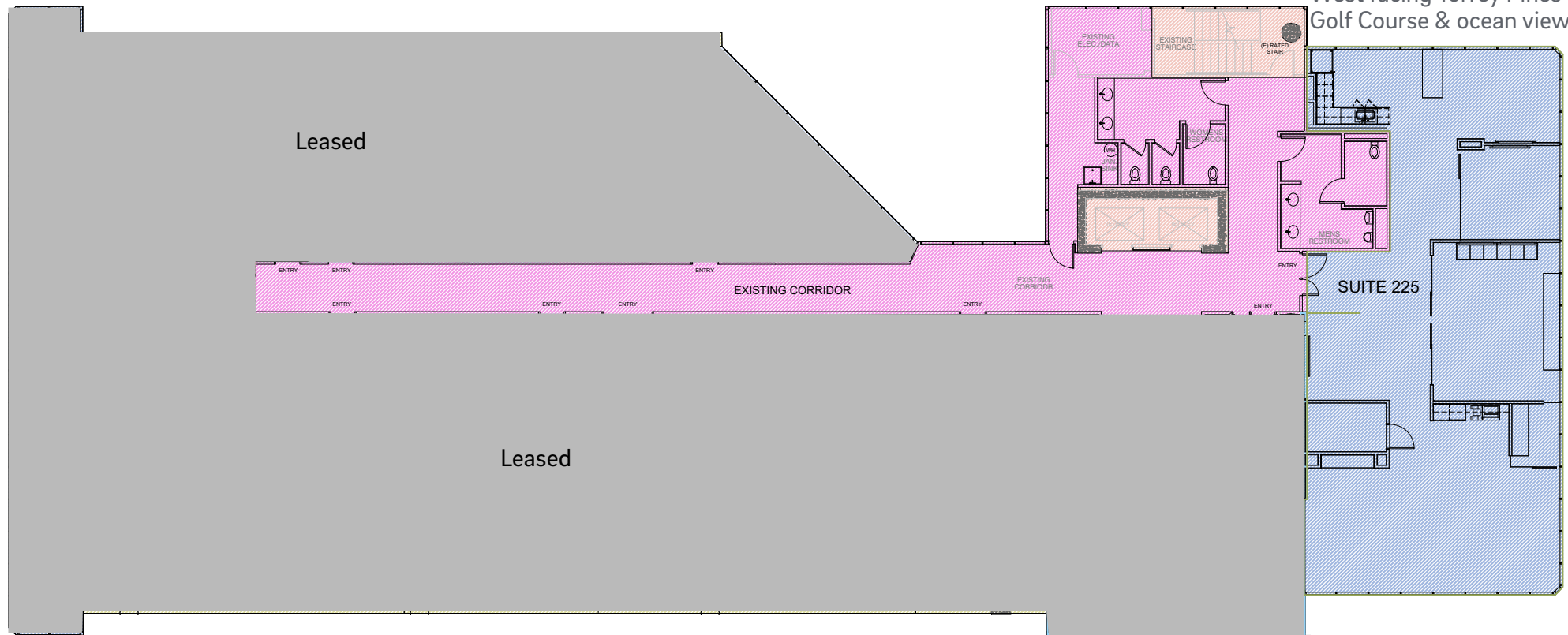


- 3,100 s.f.
- 3 offices
- 8 cubicles
- Conference
- Open kitchen
- Creative spec suite with ocean views

3366 N. Torrey Pines Ct. Suite 225

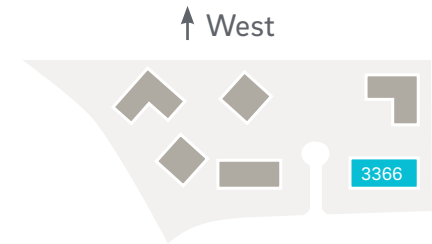


West facing Torrey Pines
Golf Course & ocean views

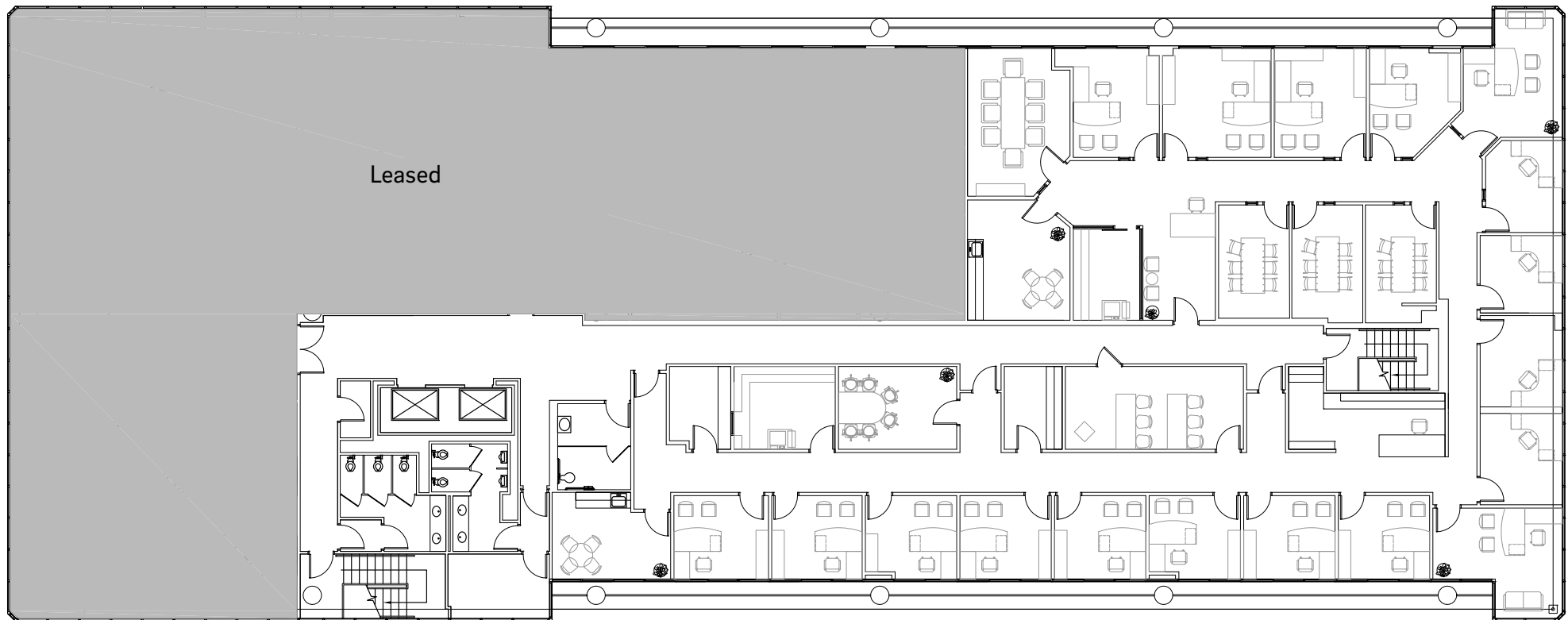


- 2,377 s.f. available June 2020
- Creative office build out with ocean views
- Exposed ceilings and floor to ceiling window line
- Large all glass conference room
- 1 private office
- Multiple areas for cubicles
- Open concept kitchen / break room
- IT/Storage room

3366 N. Torrey Pines Ct. Suite 310



West facing Torrey Pines Golf Course & Ocean

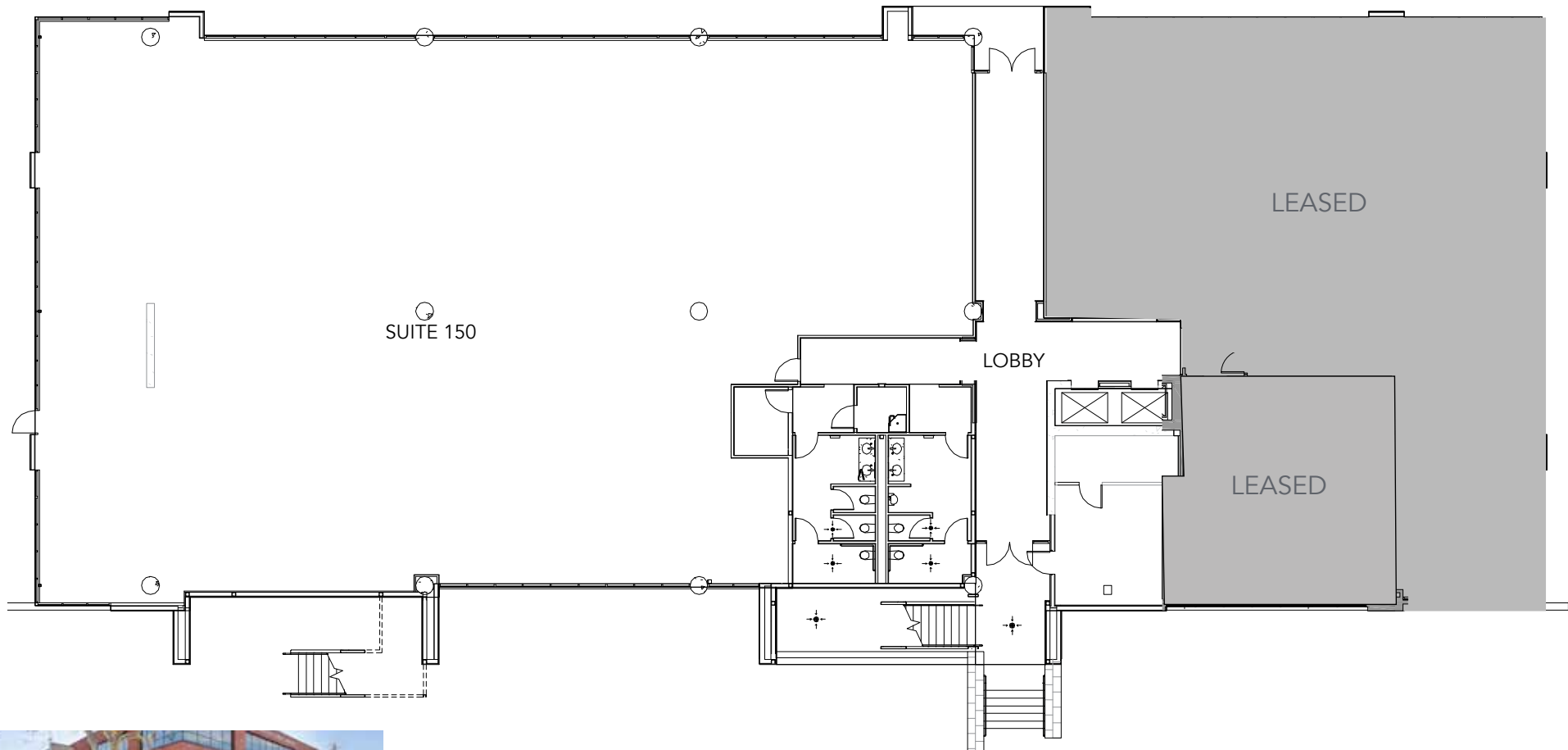


- 7,841 s.f.
- Ocean and golf course views
- 18 offices
- 8 conference rooms
- 2 storage rooms
- Kitchen
- Furniture shown on floor plan is not included

3377 N. Torrey Pines Ct. Suite 150

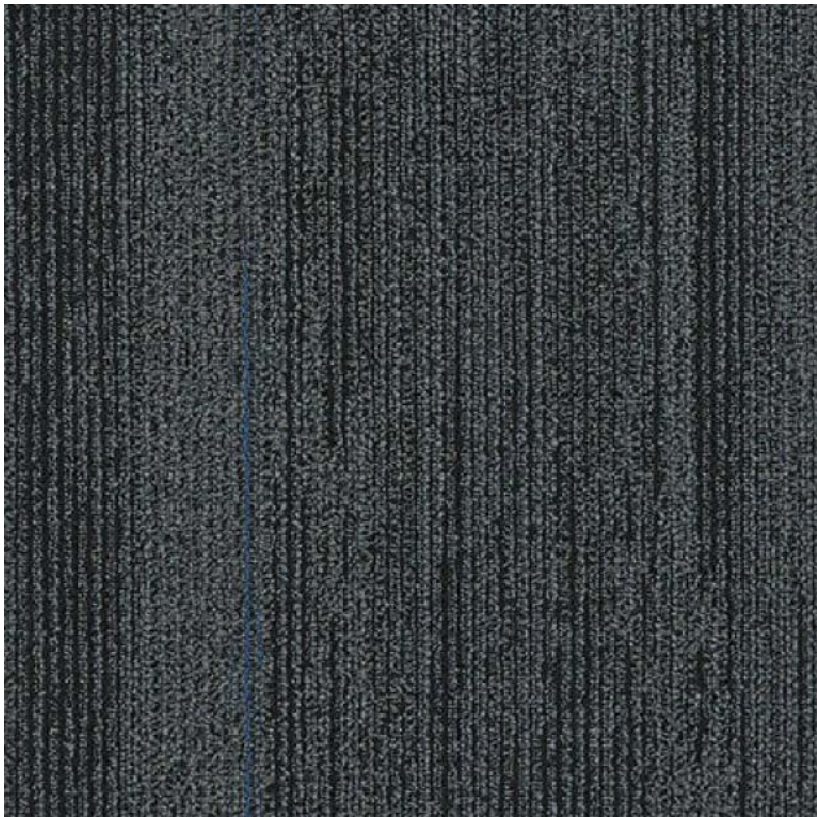


West facing Torrey Pines Golf Course & Ocean



- Suite 150: 9,095 s.f. | Shell Condition. Potential creative space. Peak ocean views.

Spec Suite Finishes



CARPET



ENTRY CHANDELIER



ISLAND PENDANT



GENERAL LIGHTING



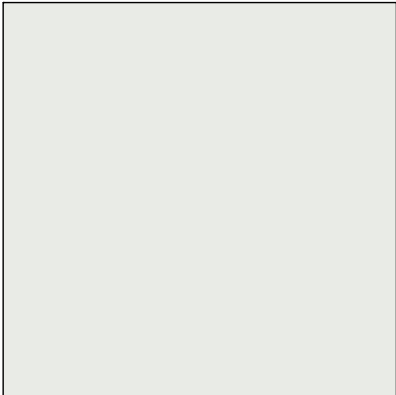
SOLID SUFACE COUNTERTOP



MILLWORK LAMINATE



TILE BACKSPLASH



FIELD PAINT



WALL BASE

Although information has been obtained from sources deemed reliable, neither Owner nor JLL makes any guarantees, warranties or representations, express or implied, as to the completeness or accuracy as to the information contained herein. Any projections, opinions, assumptions or estimates used are for example only. There may be differences between projected and actual results, and those differences may be material. The Property may be withdrawn without notice. Neither Owner nor JLL accepts any liability for any loss or damage suffered by any party resulting from reliance on this information. If the recipient of this information has signed a confidentiality agreement regarding this matter, this information is subject to the terms of that agreement. ©2019.Jones Lang LaSalle IP, Inc. All rights reserved.

LINK | *Torrey Pines*
UC San Diego Innovation Hub



Tim Olson
858.410.1253
t.olson@am.jll.com
RE lic. #01364117

Chad Urie
858.410.1187
chad.urie@am.jll.com
RE lic. #01261962

Grant Schoneman
858.410.1152
grant.schoneman@am.jll.com
RE lic. #01516695