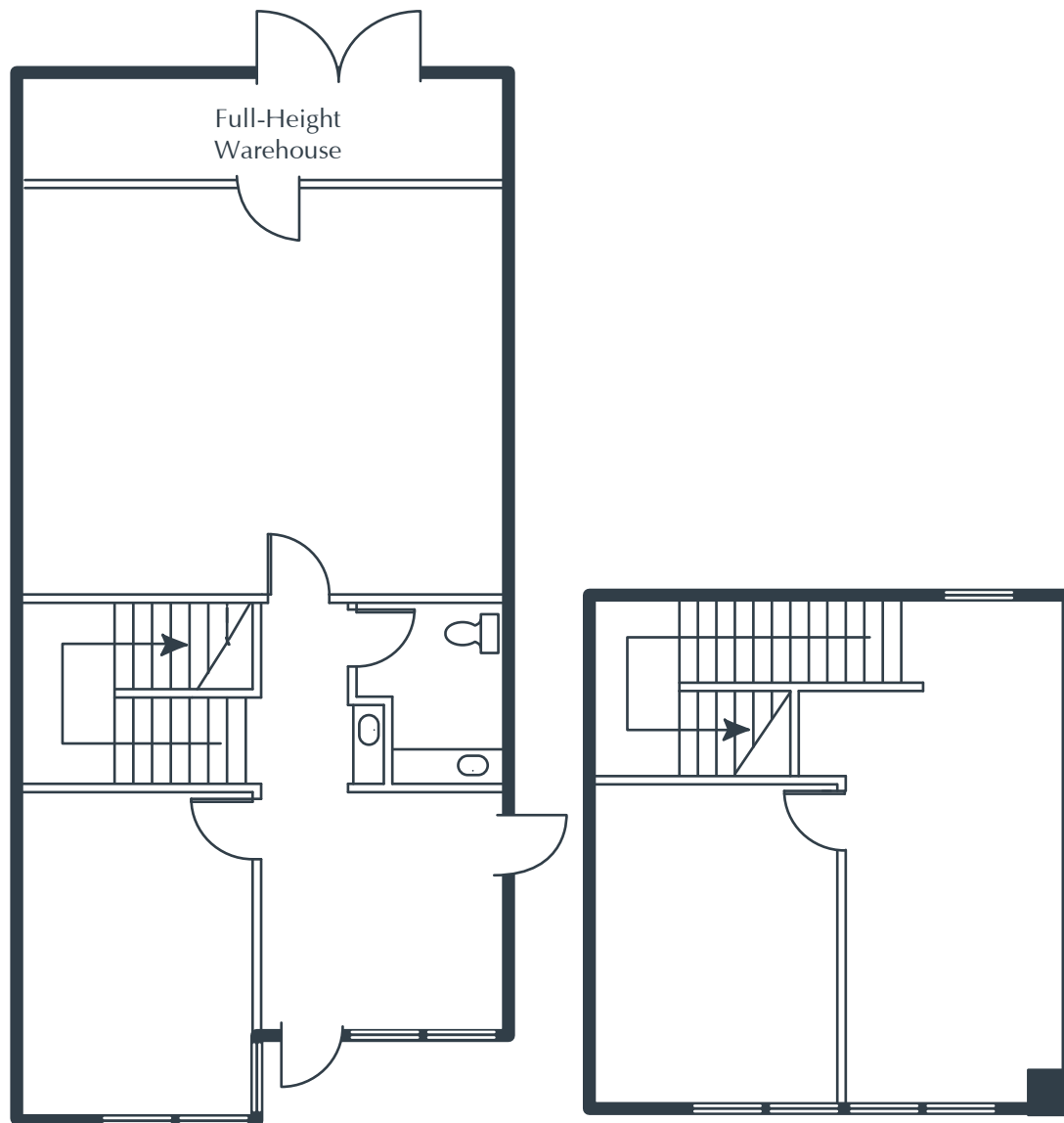


ORCHARD TECHNOLOGY PARK
11 Orchard Rd., Suite 104
Lake Forest, CA

1,802 Square Feet
\$1.20 SF/MO
Triple Net



Notes:

- Reception
- 2 Window Offices
- Restroom
- Coffee Bar
- 2 Large Open Work Areas
- Approximately 140 sq. ft. of Full-Height Warehouse with Shipping/Receiving Doors
- Part of a Professionally Managed Business Park

CONTACT INFORMATION:

All rates, terms, floor plans and building facts subject to change without notice.

ea 7.2.2020

Muna Abu-Sada/Senior Leasing Director
Phone: 949.719.7259
Mobile: 949.244.8917
E-mail: mabusada@olenproperties.com

Olen Properties Corp.
Seven Corporate Plaza
Newport Beach, CA 92660
949.644.OLEN
www.olenproperties.com

