



**COLDWELL
BANKER
COMMERCIAL**
NRT

FOR LEASE

CBCWORLDWIDE.COM

QUINCE DIAMOND EXECUTIVE CENTER

\$20.00 SF/yr (Full Service)

555 Quince Orchard Rd
Gaithersburg, MD 20878

AVAILABLE SPACE
140 - 1,100 SF



OFFICE

Faraz Cheema, MSRE, CCIM
Comm Sales Associate
202 274 0835
faraz.cheema@cbcprt.com

Barbara Stepp
Commercial Specialist
202 812 5413
Barbara.stepp@cbmove.com

©2020 Coldwell Banker. All Rights Reserved. Coldwell Banker and the Coldwell Banker Commercial logos are trademarks of Coldwell Banker Real Estate LLC. The Coldwell Banker® System is comprised of company owned offices which are owned by a subsidiary of Realogy Brokerage Group LLC and franchised offices which are independently owned and operated. The Coldwell Banker System fully supports the principles of the Equal Opportunity Act.

COLDWELL BANKER COMMERCIAL
NRT

12435 Park Potomac Ave Ste 550, Potomac, MD 20854
301.983.0200



QUINCE DIAMOND EXECUTIVE CENTER

555 Quince Orchard Rd, Gaithersburg, MD 20878

LEASE



OFFERING SUMMARY

Available SF:	140 - 346 SF
Lease Rate:	\$20.00 SF/yr (Full Service)
Lot Size:	2.37 Acres
Year Built:	1990
Building Size:	109,236 SF
Zoning:	C-2 (Montgomery County)
Market:	Washington, DC
Submarket:	Gaithersburg

PROPERTY OVERVIEW

Coldwell Banker Commercial NRT & Coldwell Banker Residential Brokerage is pleased to announce the exclusive co-listing of Quince Diamond Executive Center (555 Quince Orchard Rd, Gaithersburg, MD 20878) Suite 280 for Sublease. Spaces currently range from 140 - 346 SF with maximum continuous space of 1,100 SF. Space is designed as a co-working space and provides amenities such as reception area, break room, and large conference area for 12, and covered parking spaces.

This is a rare opportunity to lease small offices with short term lease commitments in one of the very few Class A buildings in the Submarket.

AVAILABLE SPACES

SPACE	LEASE RATE	SIZE (SF)
Suite 280 (Office 1)	\$20.00 SF/yr	166 SF
Suite 280 (Office 2)	\$20.00 SF/yr	140 SF
Suite 280 (Office 3)	\$20.00 SF/yr	224 SF
Suite 280 (Office 4)	\$20.00 SF/yr	224 SF
Suite 280 (Office 8)	\$20.00 SF/yr	346 SF

CBCWORLDWIDE.COM

Faraz Cheema, MSRE, CCIM
Comm Sales Associate
202 274 0835
faraz.cheema@cbcncrt.com

Barbara Stepp
Coldwell Banker Residential Brokerage
202 812 5413
Barbara.stepp@cbmove.com



QUINCE DIAMOND EXECUTIVE CENTER

555 Quince Orchard Rd, Gaithersburg, MD 20878



LOCATION DESCRIPTION

Walk Score: Somewhat Walkable (69)

Transit Score: Some Transit (45)

Parking

286 Surface Spaces are available

124 Covered Spaces are available

Ratio of 3.80/1,000 SF

Commuter Rail

Metropolitan Grove Commuter Rail (Brunswick Line):

4 min (Drive Time) 0.9 mi

Gaithersburg Commuter Rail (Brunswick Line):

4 min (Drive Time) 1.8 mi

Traffic Count

Quince Orchard Rd & Firstfield Rd N: 30,079 VPD

Clopper Rd & Bureau Dr NW: 40,389 VPD

I-270 & W Diamond Ave SE: 173,901 VPD

I-270 & State Hwy 124 NW: 162,952 VPD

Quince Orchard Rd & Firstfield Rd S: 5,833 VPD

CBCWORLDWIDE.COM

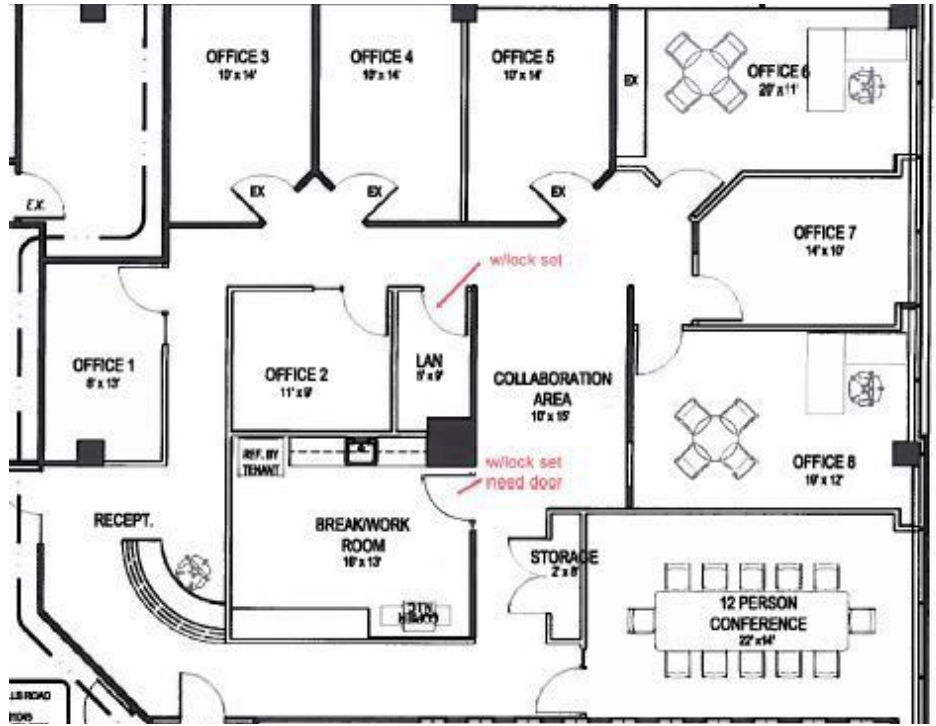
Faraz Cheema, MSRE, CCIM
Comm Sales Associate
202 274 0835
faraz.cheema@cbcncrt.com

Barbara Stepp
Coldwell Banker Residential Brokerage
202 812 5413
Barbara.stepp@cbmove.com



QUINCE DIAMOND EXECUTIVE CENTER

555 Quince Orchard Rd, Gaithersburg, MD 20878



LEASE TYPE FULL SERVICE | TOTAL SPACE 140 - 346 SF | LEASE TERM NEGOTIABLE | LEASE RATE \$20.00 SF/YR

SUITE	TENANT	SIZE (SF)	LEASE TYPE	LEASE RATE
Suite 280 (Office 1)	Available	166 SF	Full Service	\$20.00 SF/yr -
Suite 280 (Office 2)	Available	140 SF	Full Service	\$20.00 SF/yr -
Suite 280 (Office 3)	Available	224 SF	Full Service	\$20.00 SF/yr -
Suite 280 (Office 4)	Available	224 SF	Full Service	\$20.00 SF/yr -
Suite 280 (Office 8)	Available	346 SF	Full Service	\$20.00 SF/yr -

CBCWORLDWIDE.COM

Faraz Cheema, MSRE, CCIM
 Comm Sales Associate
 202 274 0835
 faraz.cheema@cbcncrt.com

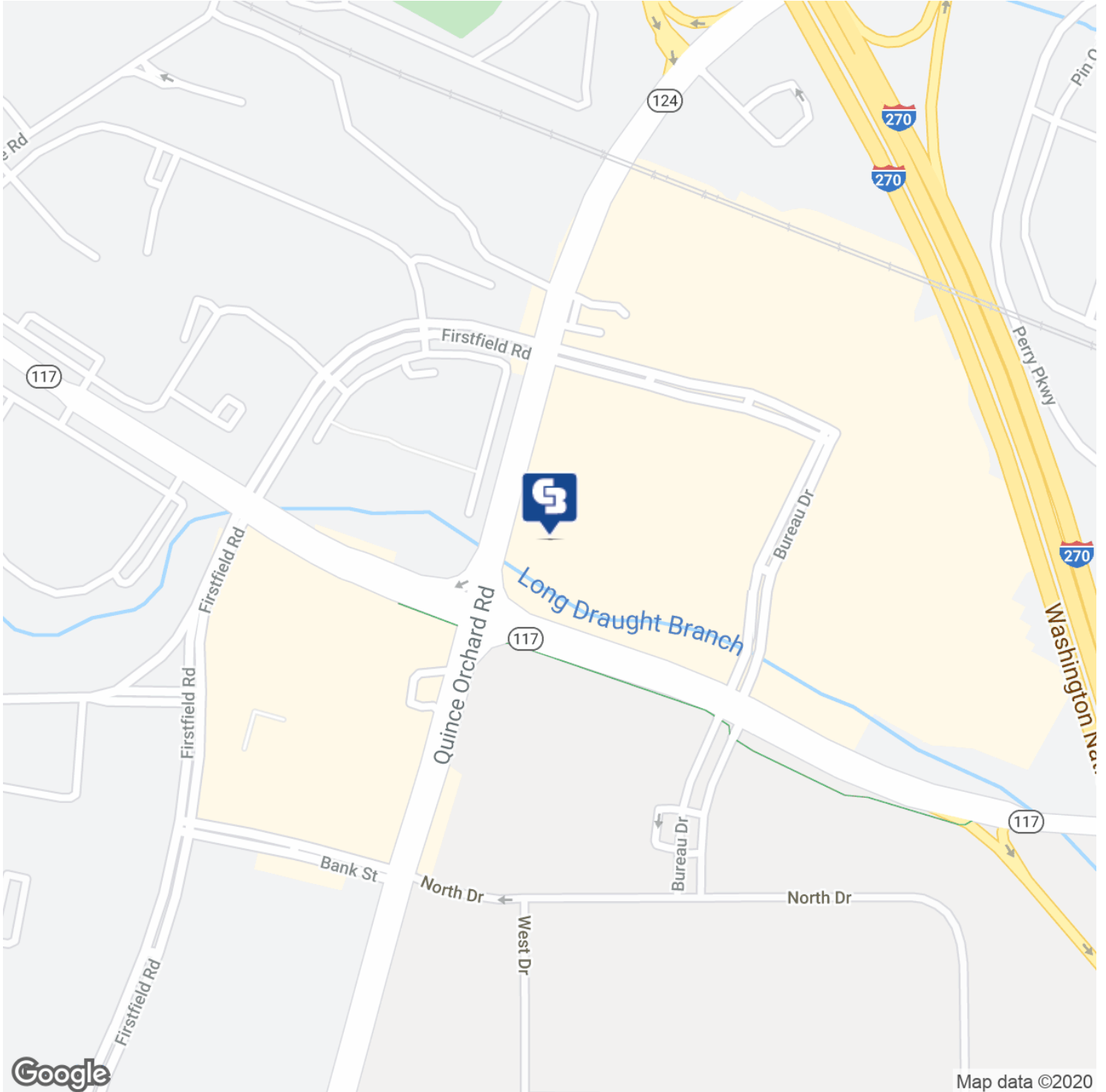
Barbara Stepp
 Coldwell Banker Residential Brokerage
 202 812 5413
 Barbara.stepp@cbmove.com



QUINCE DIAMOND EXECUTIVE CENTER

555 Quince Orchard Rd, Gaithersburg, MD 20878

LEASE



CBCWORLDWIDE.COM

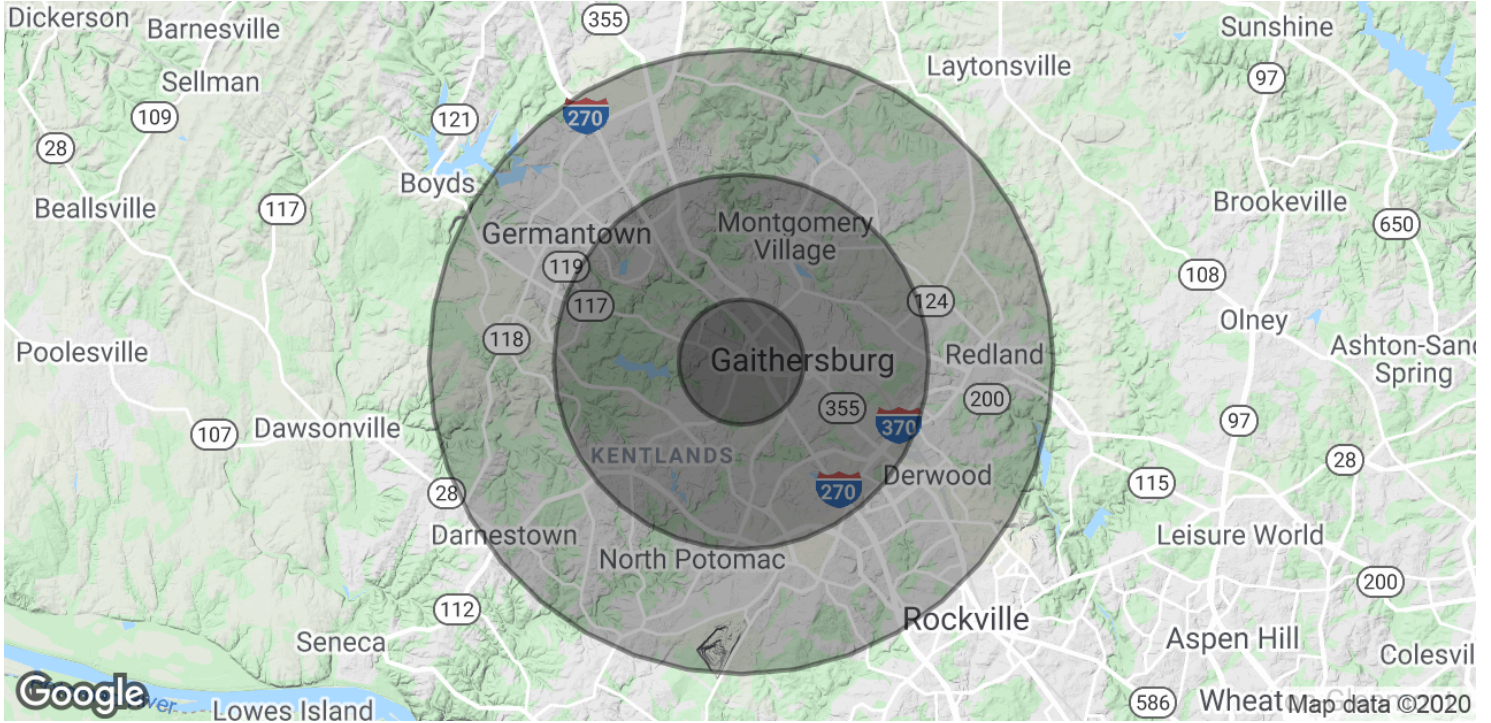
Faraz Cheema, MSRE, CCIM
Comm Sales Associate
202 274 0835
faraz.cheema@cbcrrt.com

Barbara Stepp
Coldwell Banker Residential Brokerage
202 812 5413
Barbara.stepp@cbmove.com



QUINCE DIAMOND EXECUTIVE CENTER

555 Quince Orchard Rd, Gaithersburg, MD 20878



POPULATION	1 MILE	3 MILES	5 MILES
Total Population	13,102	138,847	305,696
Average age	37.7	35.9	36.0
Average age (Male)	35.4	34.2	34.8
Average age (Female)	37.8	36.9	36.7
HOUSEHOLDS & INCOME	1 MILE	3 MILES	5 MILES
Total households	5,594	53,251	112,080
# of persons per HH	2.3	2.6	2.7
Average HH income	\$74,508	\$93,205	\$105,274
Average house value	\$412,377	\$369,776	\$431,087

* Demographic data derived from 2010 US Census

CBCWORLDWIDE.COM

Faraz Cheema, MSRE, CCIM
 Comm Sales Associate
 202 274 0835
 faraz.cheema@cbcncrt.com

Barbara Stepp
 Coldwell Banker Residential Brokerage
 202 812 5413
 Barbara.stepp@cbmove.com