

FOR LEASE

216 S. 6TH AVE
PASCO, WA



16,842 WAREHOUSE SF
1,157 OFFICE SF

\$.65 PER WAREHOUSE SF
\$1.15 PER OFFICE SF

MORE DETAILS

Available Space: 17,999 SF
Office: 1,157 SF
Warehouse: 16,842 SF
Additional 10,000 SF of Yard Available.
Ask for Privacy

PROPERTY FEATURES

- New Construction - Available June 2020
- Heavy Industrial Zone
- Suspended Gas Heat Units
- Motion Activated LED Lights in Warehouse
- 3 Phase Power
- Lighted Pylon Sign
- 36' Clear Height
- Grade Doors
- 16' x 16'



DERRICK STRICKER CCIM/SIOR

Derrick@naitcc.com

509.430.8533 Cell

509.943.5200 Office

509.943.5244 Fax



NAI Tri-Cities

Commercial Real Estate Services, Worldwide.

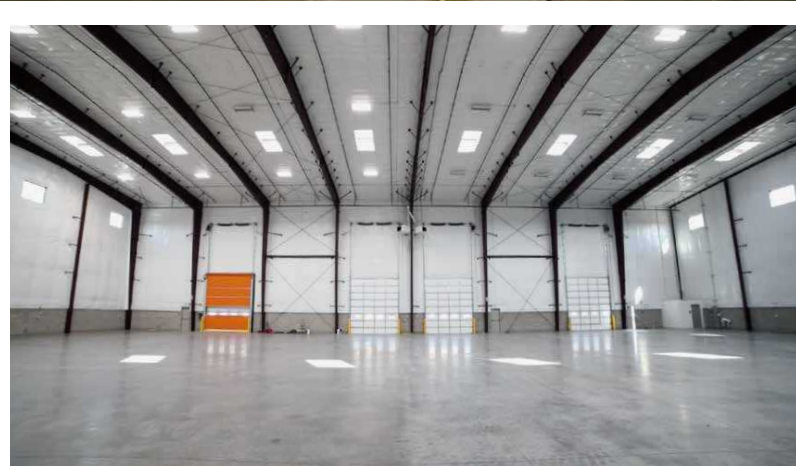
NAI Group LLC 89 Gage Blvd., Richland, WA 99352

www.NAITri-Cities.com

Above information from reliable sources, but not guaranteed, offered subject to errors, omissions, previous sale, change in price and withdrawal without notice.

FOR LEASE

216 S. 6TH AVE
PASCO, WA



DERRICK STRICKER CCIM/SIOR

Derrick@naitcc.com

509.430.8533 Cell

509.943.5200 Office

509.943.5244 Fax



NAI Tri-Cities

Commercial Real Estate Services, Worldwide.

NAI Group LLC 89 Gage Blvd., Richland, WA 99352

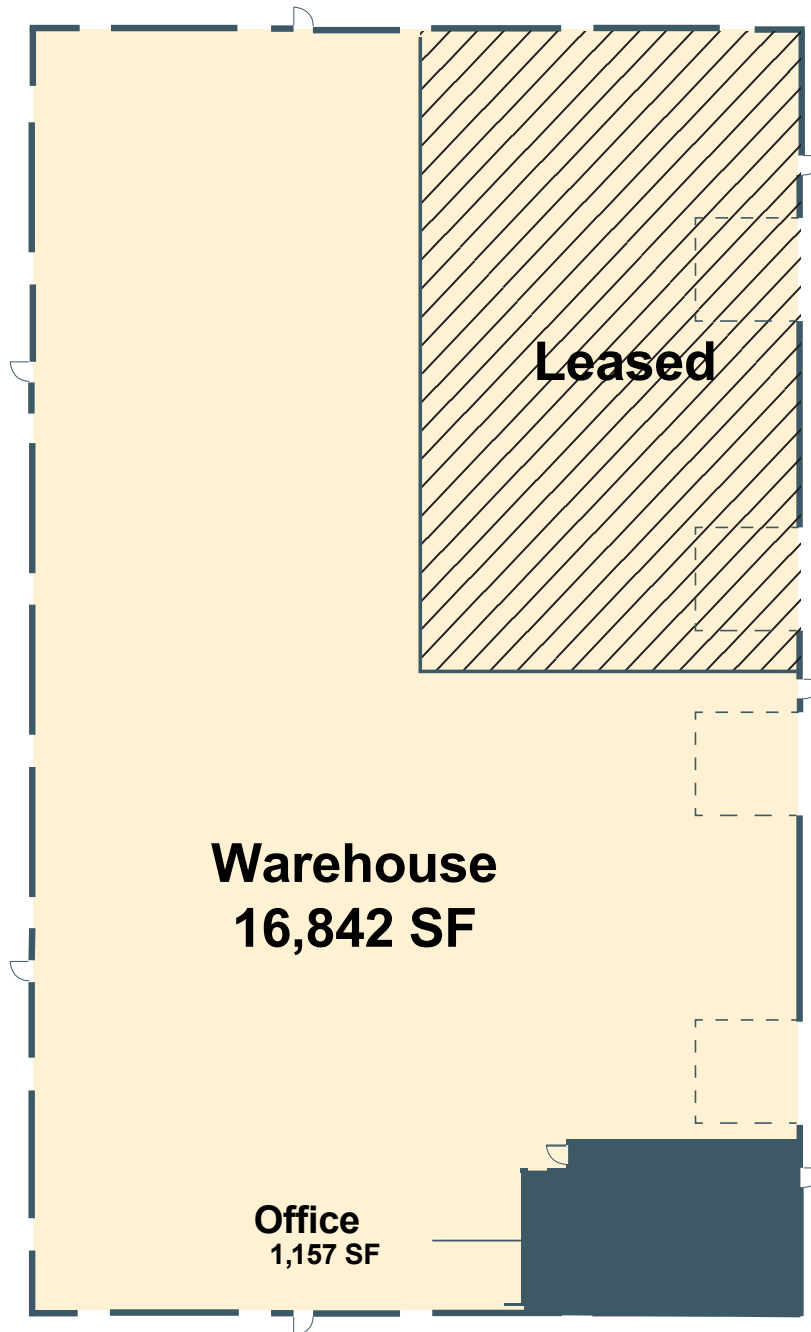
www.NAITri-Cities.com

Above information from reliable sources, but not guaranteed, offered subject to errors, omissions, previous sale, change in price and withdrawal without notice.

FOR LEASE

216 S. 6TH AVE
PASCO, WA

FLOOR PLAN



DERRICK STRICKER CCIM/SIOR

Derrick@naitcc.com

509.430.8533 Cell

509.943.5200 Office

509.943.5244 Fax



NAI Tri-Cities

Commercial Real Estate Services, Worldwide.

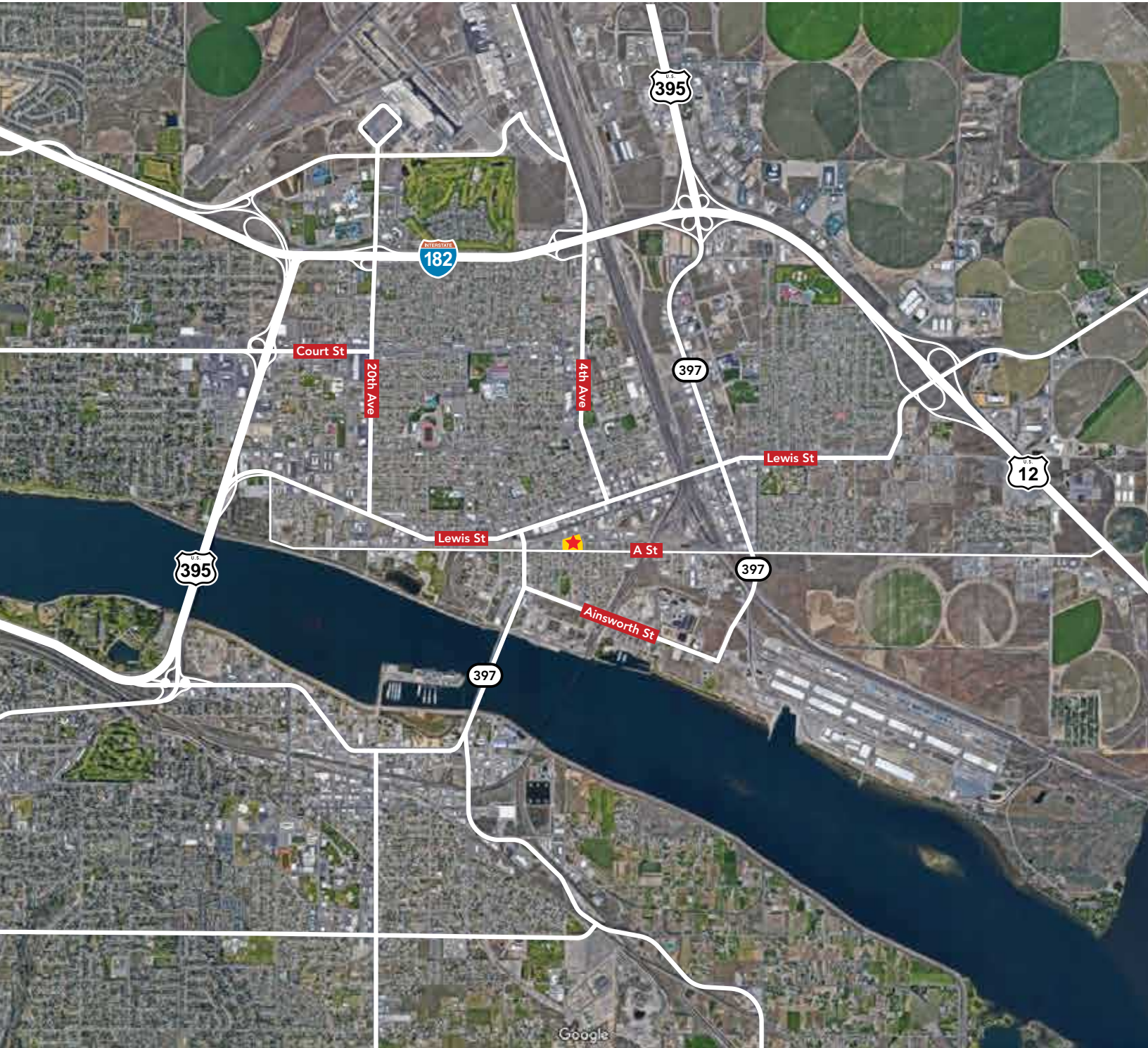
NAI Group LLC 89 Gage Blvd., Richland, WA 99352

www.NAITri-Cities.com

Above information from reliable sources, but not guaranteed, offered subject to errors, omissions, previous sale, change in price and withdrawal without notice.

FOR LEASE

216 S. 6TH AVE
PASCO, WA



Derrick@naitcc.com
509.430.8533 Cell
509.943.5200 Office
509.943.5244 Fax



NAI Tri-Cities

Commercial Real Estate Services, Worldwide.
NAI Group LLC 89 Gage Blvd., Richland, WA 99352

www.NAITri-Cities.com

Above information from reliable sources, but not guaranteed, offered subject to errors, omissions, previous sale, change in price and withdrawal without notice.