

**FOR LEASE**

5606 Summitview Ave  
Yakima, WA 98908



## SUMMITVIEW CENTER

Don Whittles | Tim Weber | Blake Weber




First Western Properties—Tacoma Inc. | 253.472.0404  
6402 Tacoma Mall Blvd, Tacoma, WA 98409 | fwp-inc.com

## AVAILABLE

30,344/15,000 SF      \$14.00 PSF      PLUS NNN

- High visibility retail building previously occupied by Rite Aid
- Located within an established neighborhood shopping center anchored by Safeway
- Parking ratio 3 : 1,000 SF
- Built in 1983
- Zoning LCC
- 19k CPD Summitview Ave
- 3.4k CPD N 56th Ave



Regis - 2020	 Population	 Average HH Income	 Daytime Population
Mile 1	10,591	\$99,770	6,518
Mile 3	60,855	\$86,762	44,642
Mile 5	115,389	\$76,866	88,963

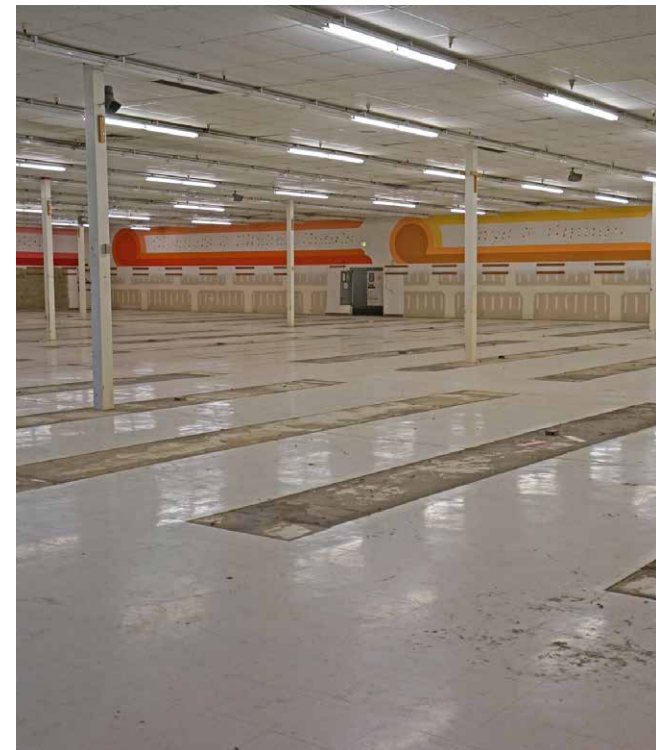
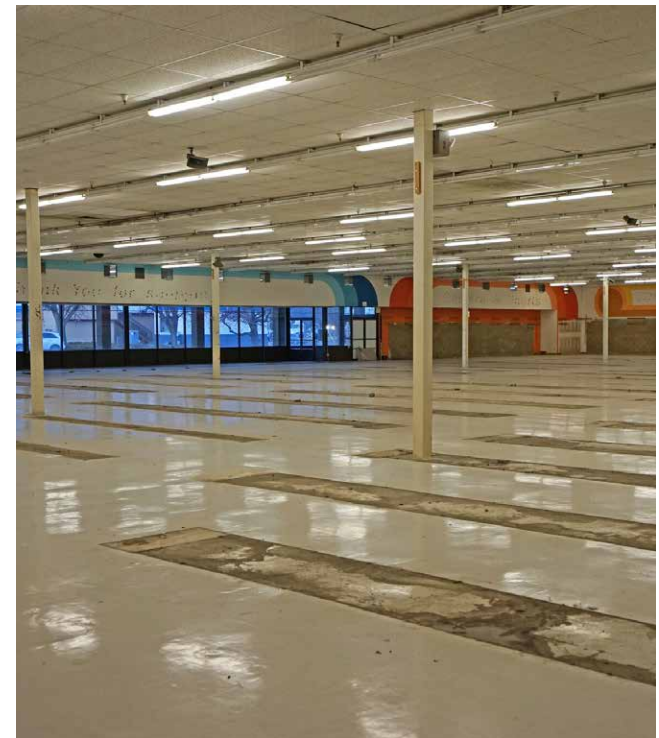
## NEARBY TENANTS



LOCATION AERIAL



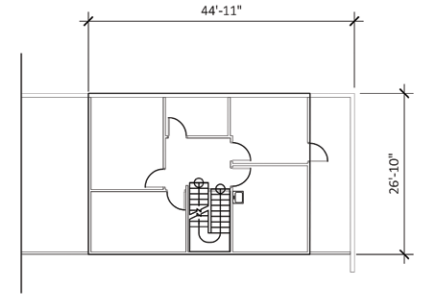
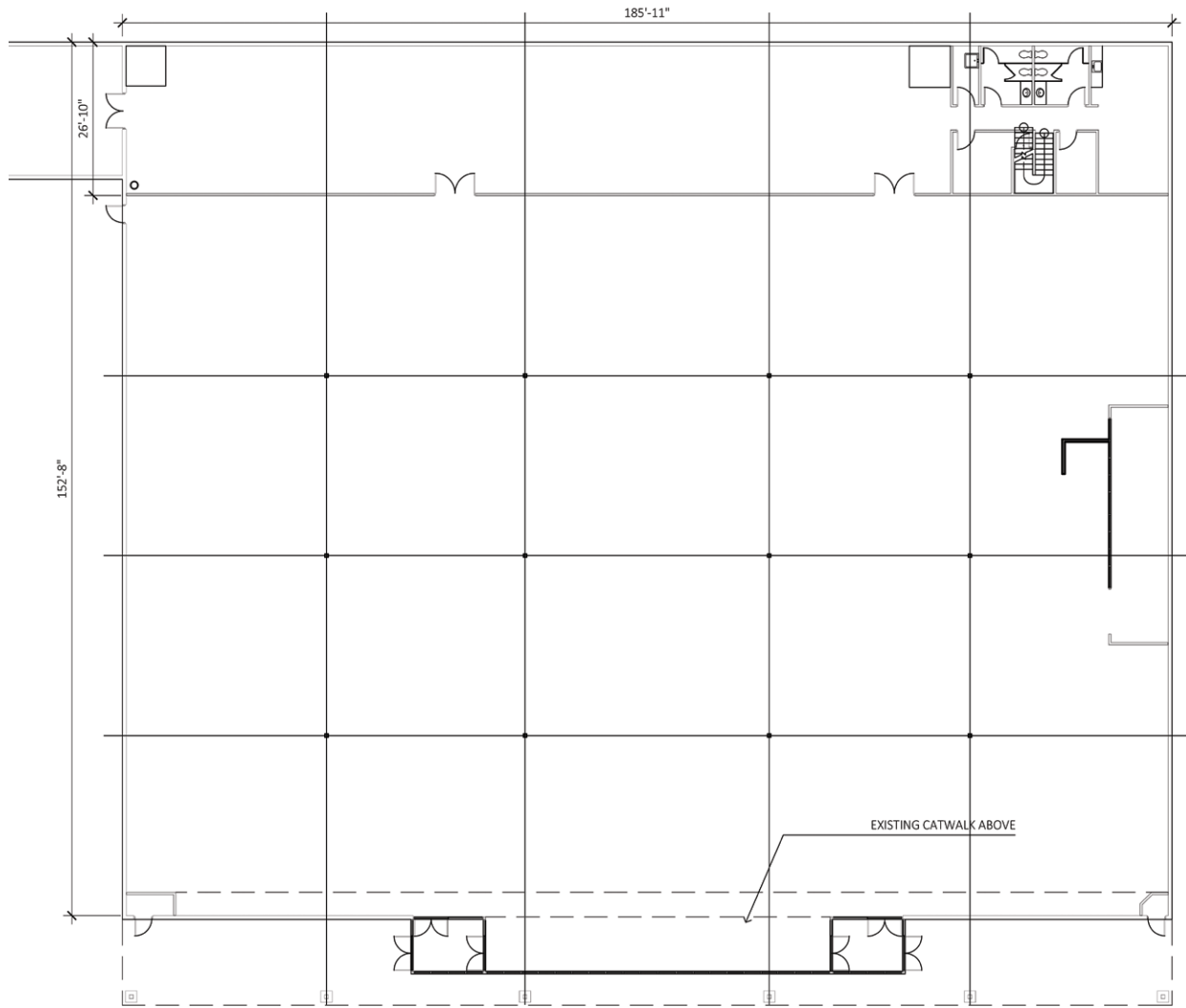
PHOTOS



# CONCEPTUAL OPTIONS



# FLOOR PLAN



UPPER FLOOR PLAN

SCALE: NOT TO SCALE

TACOMA | KIRKLAND | PORTLAND | SEATTLE

RELATIONSHIP FOCUSED. RESULTS DRIVEN.

**DON WHITTLES**

253.471.5509

[dwhittles@firstwesternproperties.com](mailto:dwhittles@firstwesternproperties.com)

**TIM WEBER**

253.471.5502

[tweber@firstwesternproperties.com](mailto:tweber@firstwesternproperties.com)

**BLAKE WEBER**

253.284.3646

[bweber@firstwesternproperties.com](mailto:bweber@firstwesternproperties.com)



First Western Properties—Tacoma Inc. | 253.472.0404  
6402 Tacoma Mall Blvd, Tacoma, WA 98409 | [fwp-inc.com](http://fwp-inc.com)

© First Western Properties, Inc. DISCLAIMER: The above information has been secured from sources believed to be reliable, however, no representations are made to its accuracy. Prospective tenants or buyers should consult their professional advisors and conduct their own independent investigation. Properties are subject to change in price and/or availability without notice.