

FOR SALE OR LEASE

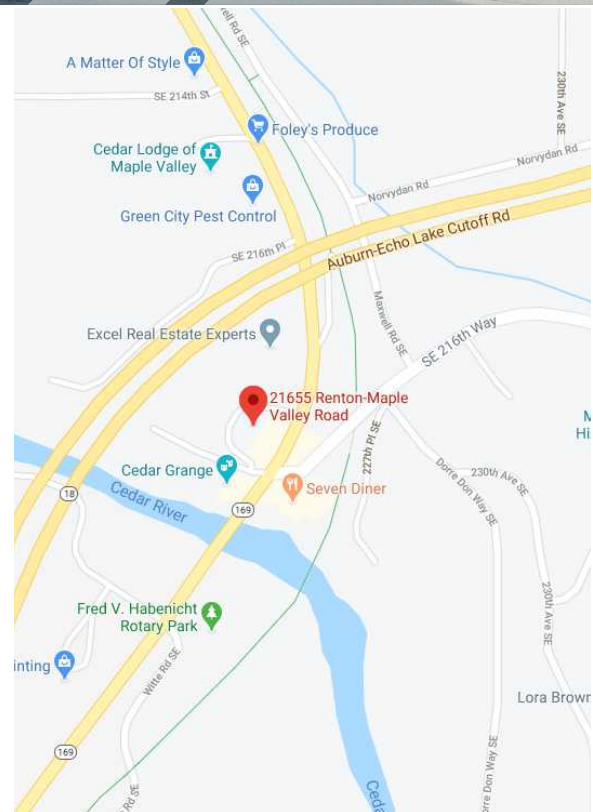
## MAPLE VALLEY MARKET

21655 RENTON-MAPLE VALLEY RD SE | MAPLE VALLEY, WA



### PROPERTY FEATURES:

- Building: 8,415 SF (divisible)
- Land: 32,812 SF (0.75 AC)
- Parcel: 5108 40012 - Zoned Neighborhood Business (NB) King County
- Tenancy: Flexible (currently divisible to approximately 7,100 SF and 1,315 SF)
- Construction: Masonry - concrete block with large brick facade
- Ample Parking: 54 stalls
- Heavy Traffic Count: 19,152 on Hwy-169 (SE Renton Maple Valley Rd) & SE Bain Rd (2018)
- Highly visible location at the crossing of Hwy-18 and Hwy-169.
- **Offering Lease Rate: \$15.75 SF, NNN**
- **Offering Purchase Price: \$1,820,000**



For Additional Information:



**ARNE SVENDSEN**  
(206) 947-2885  
asvensen@andoverco.com



**MIKE EWING**  
(206) 595-2103  
michael@michaelewingteam.com

The Andover Company Inc./CORFAC International | 900 SW 16th St, Ste 100, Renton, WA 98057 | (206) 244-0770 | [www.andoverco.com](http://www.andoverco.com)

The information contained herein has been obtained from reliable sources, but is not guaranteed. A prospective buyer/tenant should verify each item relating to this property and all information contained herein.



FOR SALE OR LEASE

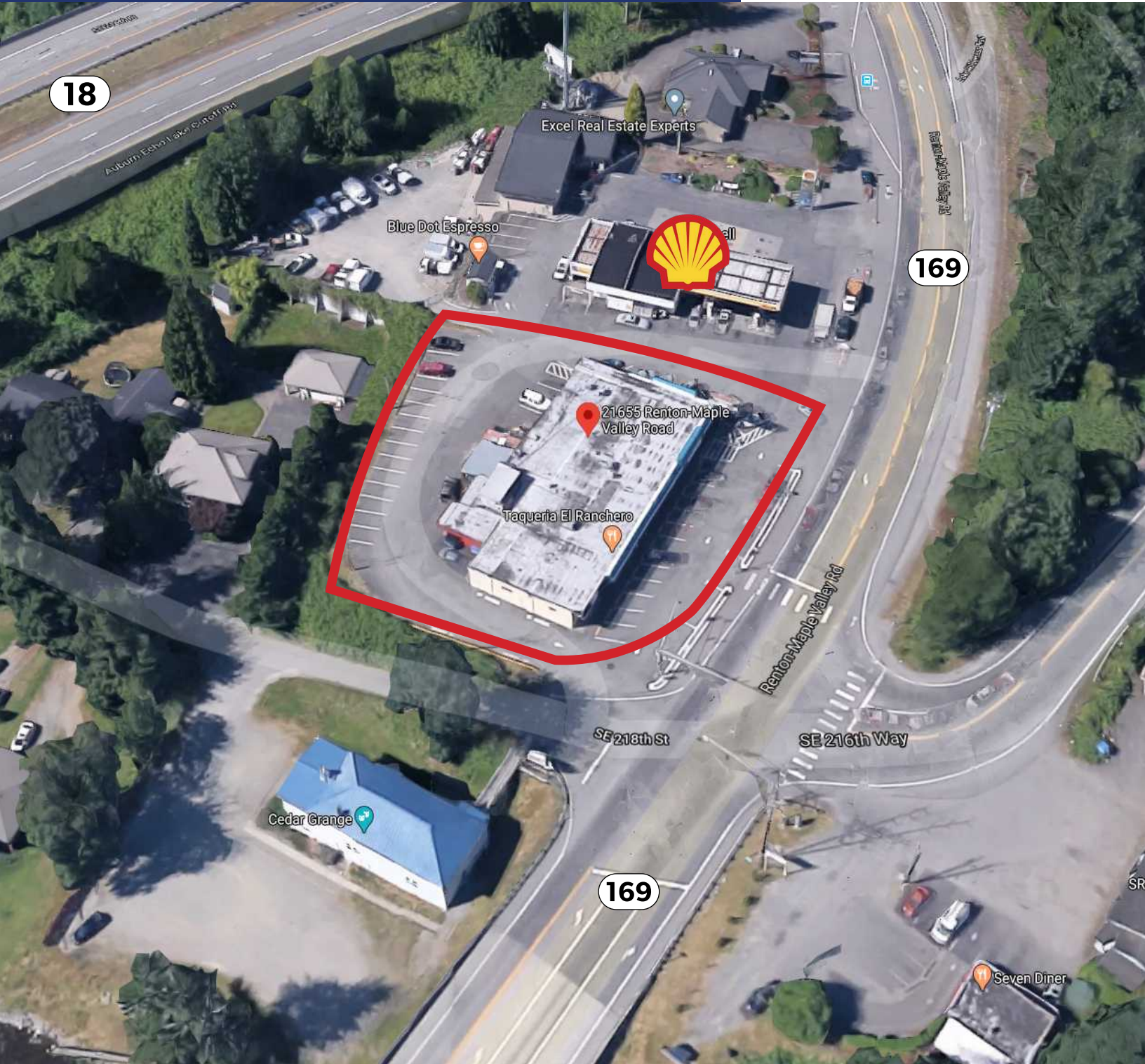
## MAPLE VALLEY MARKET

21655 RENTON-MAPLE VALLEY RD SE | MAPLE VALLEY, WA



THE ANDOVER  
COMPANY, INC.

CORFAC INTERNATIONAL



For Additional Information:



THE ANDOVER  
COMPANY, INC.  
CORFAC INTERNATIONAL

**ARNE SVENDSEN**  
(206) 947-2885  
asvensen@andoverco.com



KELLER WILLIAMS.

**MIKE EWING**  
(206) 595-2103  
michael@michealewingteam.com

The Andover Company Inc./CORFAC International | 900 SW 16th St, Ste 100, Renton, WA 98057 | (206) 244-0770 | [www.andoverco.com](http://www.andoverco.com)

The information contained herein has been obtained from reliable sources, but is not guaranteed. A prospective buyer/tenant should verify each item relating to this property and all information contained herein.

FOR SALE OR LEASE

## MAPLE VALLEY MARKET

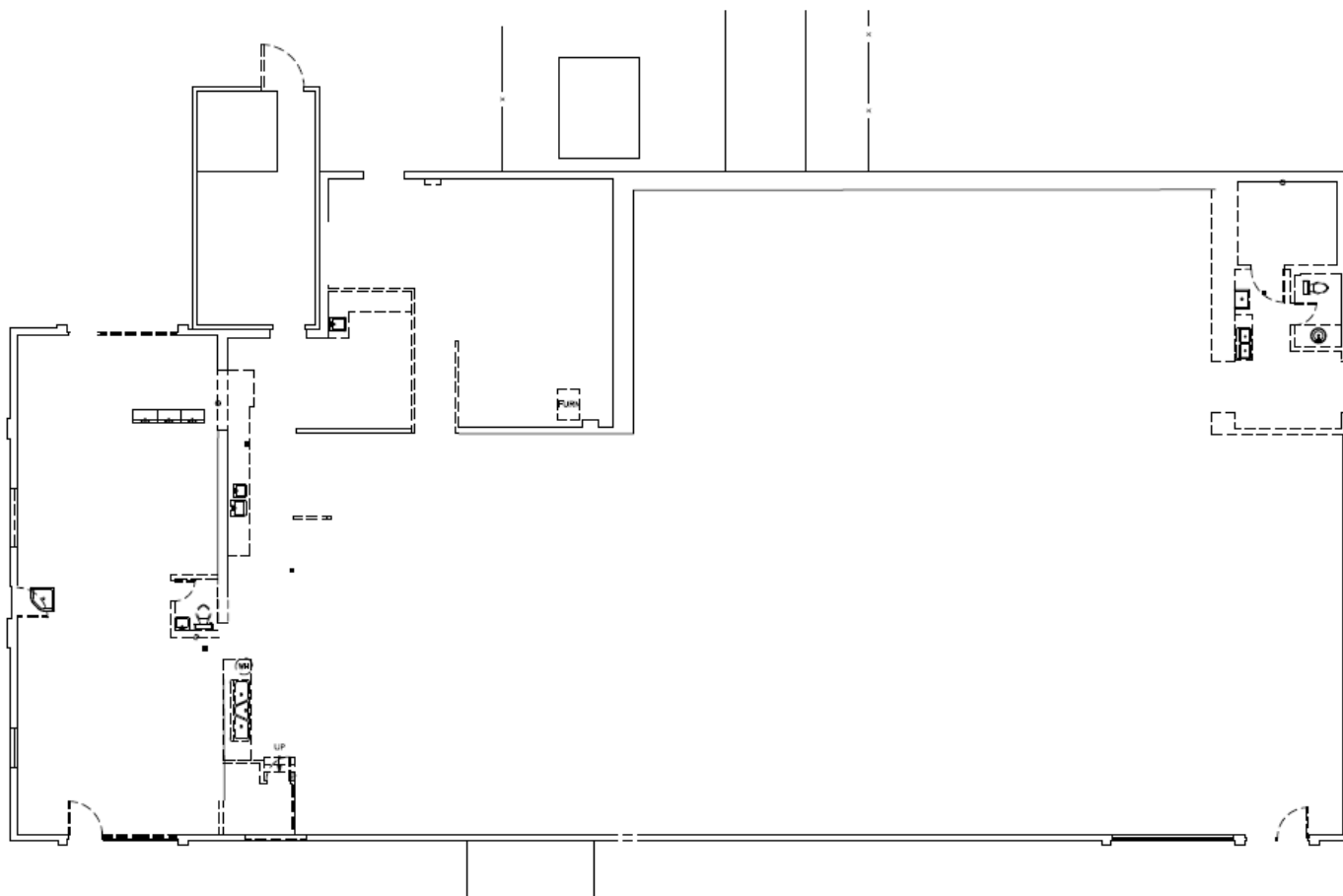
21655 RENTON-MAPLE VALLEY RD SE | MAPLE VALLEY, WA



THE ANDOVER  
COMPANY, INC.

CORFAC INTERNATIONAL

## FLOOR PLAN



For Additional Information:



THE ANDOVER  
COMPANY, INC.  
CORFAC INTERNATIONAL

**ARNE SVENDSEN**  
(206) 947-2885  
asvensen@andoverco.com



KELLERWILLIAMS.

**MIKE EWING**  
(206) 595-2103  
michael@michaelewingteam.com

The Andover Company Inc./CORFAC International | 900 SW 16th St, Ste 100, Renton, WA 98057 | (206) 244-0770 | [www.andoverco.com](http://www.andoverco.com)

The information contained herein has been obtained from reliable sources, but is not guaranteed. A prospective buyer/tenant should verify each item relating to this property and all information contained herein.

FOR SALE OR LEASE

## MAPLE VALLEY MARKET

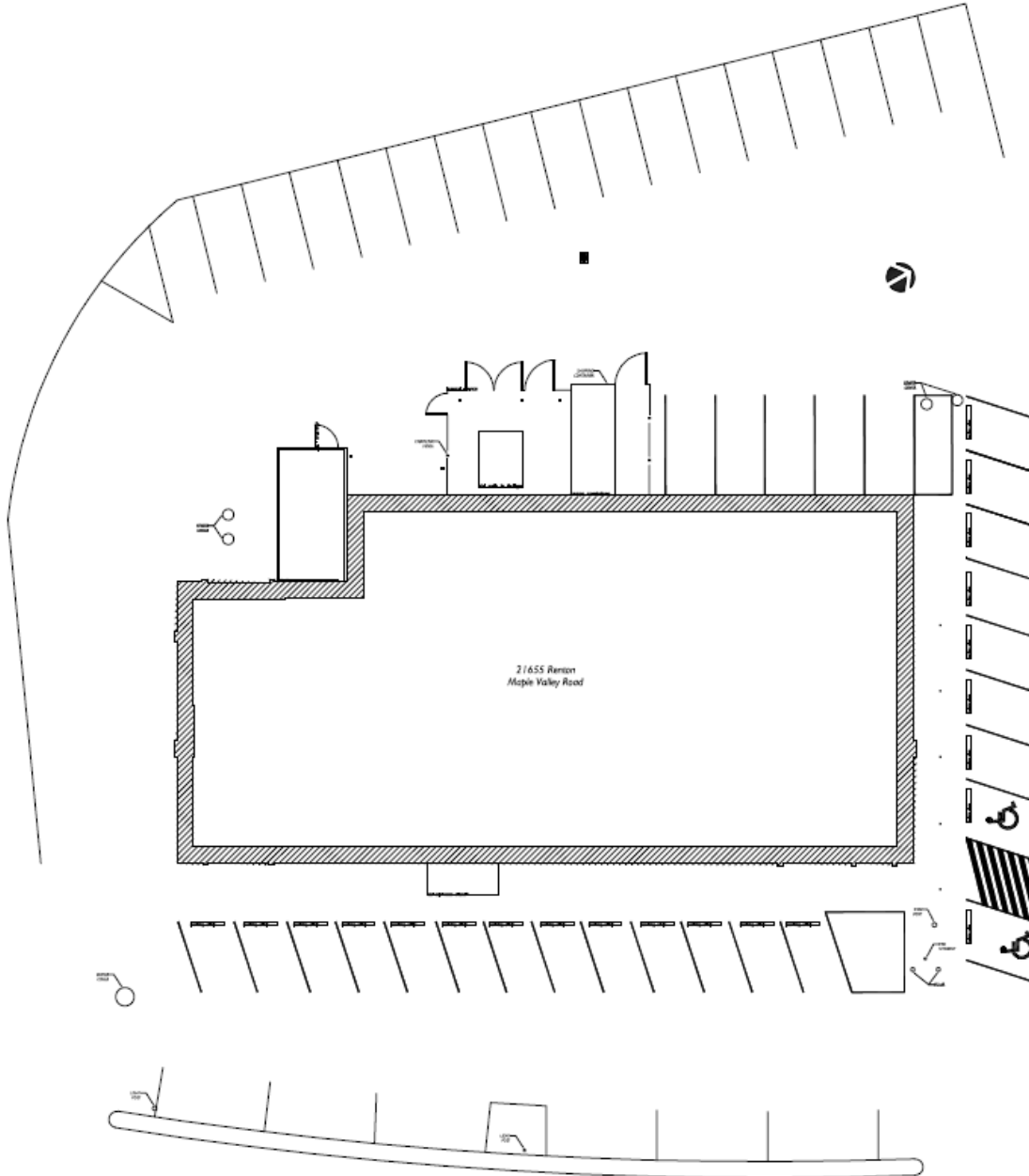
21655 RENTON-MAPLE VALLEY RD SE | MAPLE VALLEY, WA



THE ANDOVER  
COMPANY, INC.

CORFAC INTERNATIONAL

## SITE PLAN



For Additional Information:



THE ANDOVER  
COMPANY, INC.  
CORFAC INTERNATIONAL

**ARNE SVENDSEN**  
(206) 947-2885  
asvensen@andoverco.com



KELLER WILLIAMS.

**MIKE EWING**  
(206) 595-2103  
michael@michaielewingteam.com

The Andover Company Inc./CORFAC International | 900 SW 16th St, Ste 100, Renton, WA 98057 | (206) 244-0770 | [www.andoverco.com](http://www.andoverco.com)

The information contained herein has been obtained from reliable sources, but is not guaranteed. A prospective buyer/tenant should verify each item relating to this property and all information contained herein.