

FOR LEASE



1401 N TUSTIN AVE

SANTA ANA, CA

Allen Basso
Senior Vice President
CalDRE 01298152
949.790.3130
abasso@leeirvine.com

Brian Garbutt
Senior Vice President
CalDRE 01215482
949.794.4721
bgarbutt@lee-associates.com

Eric Darnell
Vice President
CalDRE: 01888743
949.790.3157
edarnell@leeirvine.com

FOLLOW US ON INSTAGRAM @LEEASSOCIATESIRVINE



No warranty or representation is made to the accuracy of the foregoing information. Terms of sale or lease and availability are subject to change or withdrawal without notice.

PROPERTY DETAILS



FEATURES

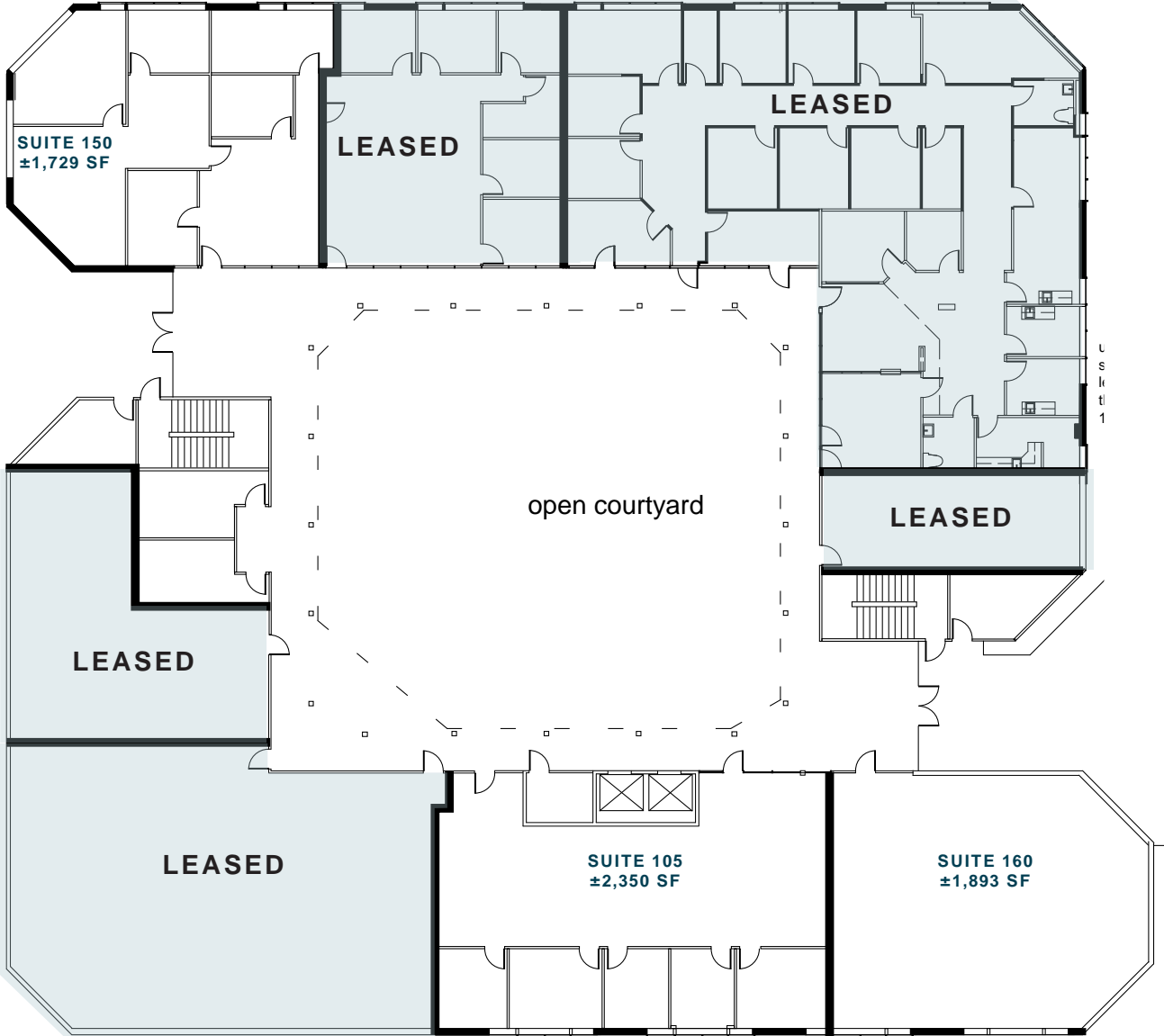
- MEDICAL AND OFFICE SUITES AVAILABLE
- 3-STORY MEDICAL/OFFICE BUILDING
- EASY ACCESS AND CONVENIENT PARKING
- FREE SURFACE PARKING (RESERVED PARKING AVAILABLE UPON REQUEST)
- PROFESSIONALLY MANAGED
- IDEALLY SUITED FOR THERAPISTS, LAW FIRMS, DOCTORS AND ACCOUNTANTS
- CENTRALLY LOCATED NEAR RESTAURANTS, BANKS AND MAJOR FREEWAYS

AVAILABILITY

Suite 105	Office	2,350	\$2.40 FSG	5 offices, large open area and 2 entrances into suite
Suite 150	Office	1,729	\$2.40 FSG	Large reception/waiting area, 4 offices, storage/data area and open area
Suite 160	Office	1,893	\$2.40 FSG	Reception, private window offices, open area, and conference room
Suite 260	Office	1,440	\$2.40 FSG	Call for details
Suite 330	Medical	1,492	\$2.40 FSG	Waiting area, reception, 2 offices, 1 exam room and open area
Suite 340	Medical	3,103	\$2.40 FSG	Fully built out dental space
Suite 345	Medical	2,830	\$2.40 FSG	Available in 30 days
Suite 350	Office	2,649	\$2.40 FSG	
Suite 360	Medical	5,286	\$2.40 FSG	Available 30 days, sublease through 12/31/2022

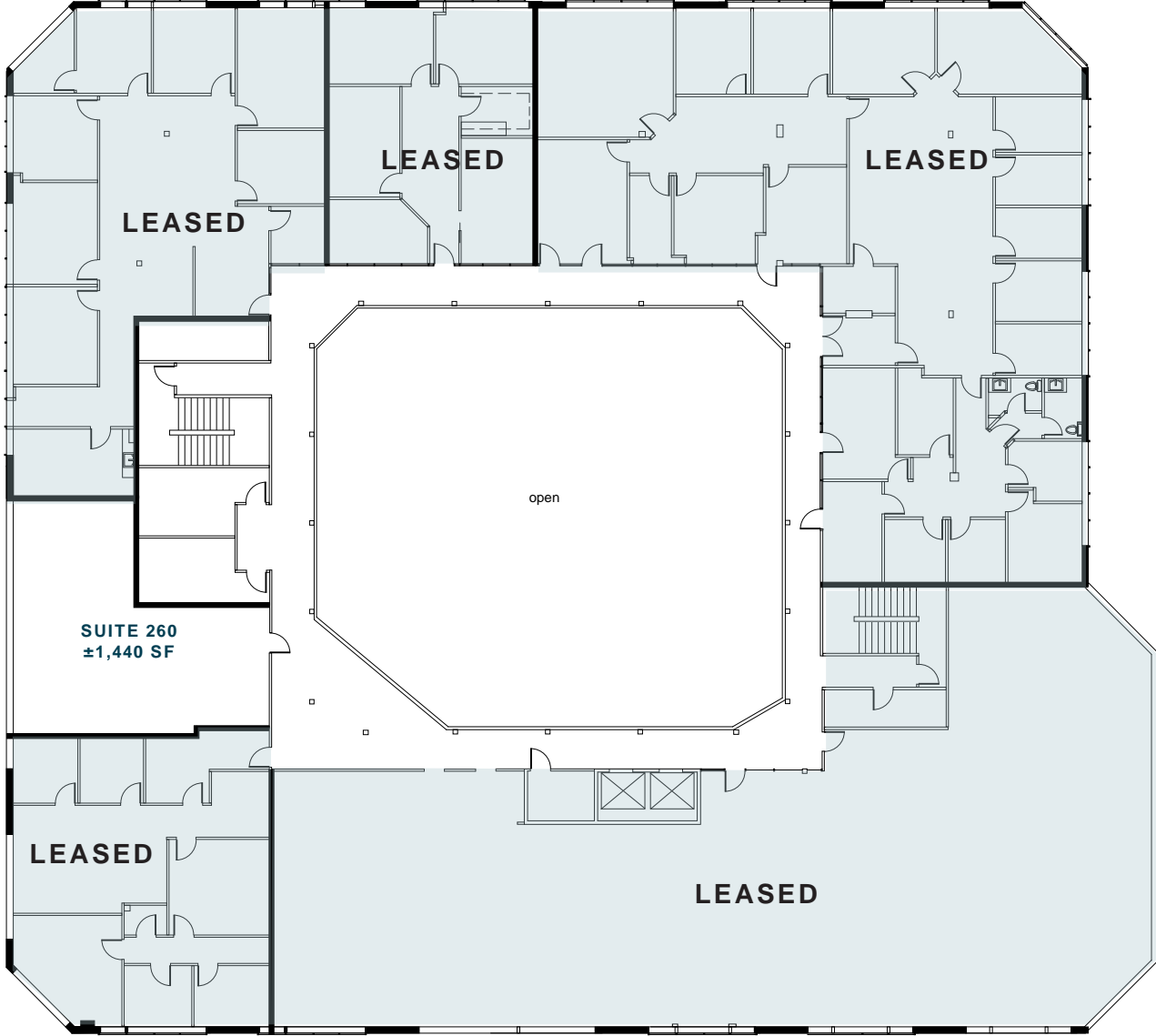
1ST FLOOR

±1,729 - ±4,243 SF AVAILABLE



2ND FLOOR

±1,440 SF AVAILABLE



3RD FLOOR

±1,492 - ±15,360 SF AVAILABLE

