

SOUTH PARK / FASHION DISTRICT INDUSTRIAL / RETAIL / FLEX OFFICE

120-126 E. 11th Street, Los Angeles, CA 90015



ASHER PERGAMENT · Associate
(818) 697-9371 · asher@illicre.com
DRE #01922775

TODD NATHANSON · President
(818) 514-2204 · todd@illicre.com
DRE #00923779



SOUTH PARK / FASHION DISTRICT INDUSTRIAL / RETAIL / FLEX OFFICE

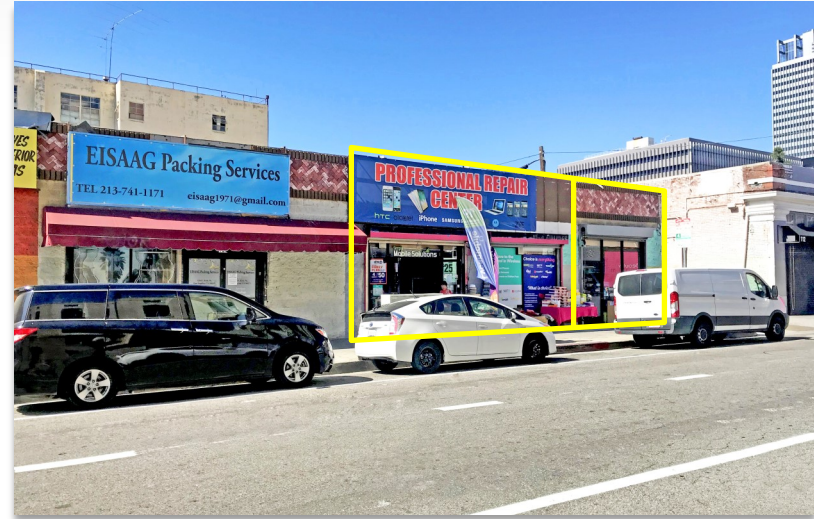
120-126 E. 11th Street, Los Angeles, CA 90015

PROPERTY FEATURES

- + Two ±1,614 SF Units Available
- + M2 Zoned Retail Property Location in an Enterprise Zone
- + Property is Suited for Retail, Flex, Industrial, Industrial, or Office
- + Ground Level Loading
- + On-Site (Limited) Parking is Available

AREA AMENITIES

- + Bridging the Gap Between the Fashion District and South Park, Located on the Eastern Edge of South Park and Western Edge of the Fashion District
- + Close to 500 New Residential Units
- + The Closest Retail to Service Residential Area Lacking Retail Services
- + Located One Block From the Newly Constructed Proper Hotel



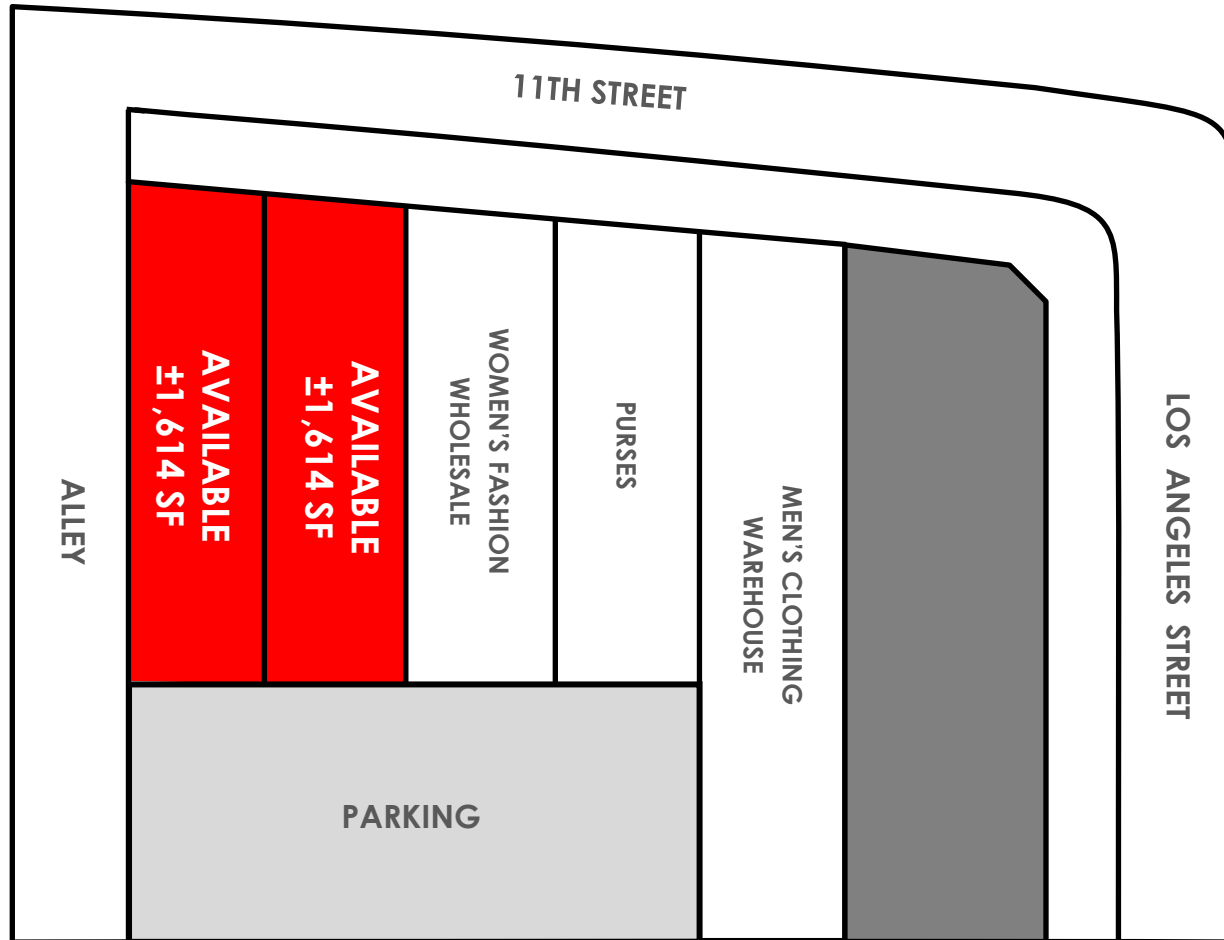
ASHER PERGAMENT · Associate
(818) 697-9371 · asher@illicre.com
DRE #01922775

TODD NATHANSON · President
(818) 514-2204 · todd@illicre.com
DRE #00923779



SOUTH PARK / FASHION DISTRICT INDUSTRIAL / RETAIL / FLEX OFFICE

120-126 E. 11th Street, Los Angeles, CA 90015



ASHER PERGAMENT · Associate
(818) 697-9371 · asher@illicre.com
DRE #01922775

TODD NATHANSON · President
(818) 514-2204 · todd@illicre.com
DRE #00923779



SOUTH PARK / FASHION DISTRICT INDUSTRIAL / RETAIL / FLEX OFFICE

120-126 E. 11th Street, Los Angeles, CA 90015



ASHER PERGAMENT · Associate
 (818) 697-9371 · asher@illicre.com
 DRE #01922775

TODD NATHANSON · President
 (818) 514-2204 · todd@illicre.com
 DRE #00923779

