

5831

Beach blvd Buena Park



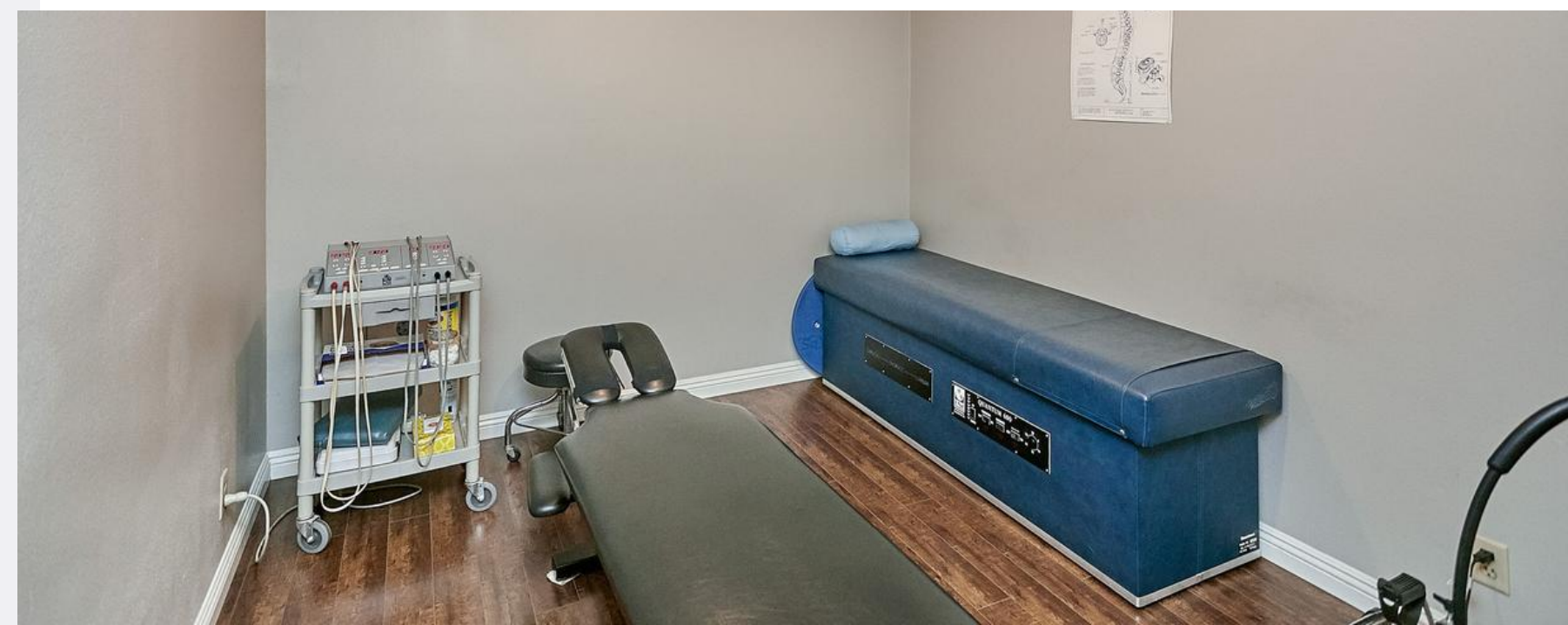
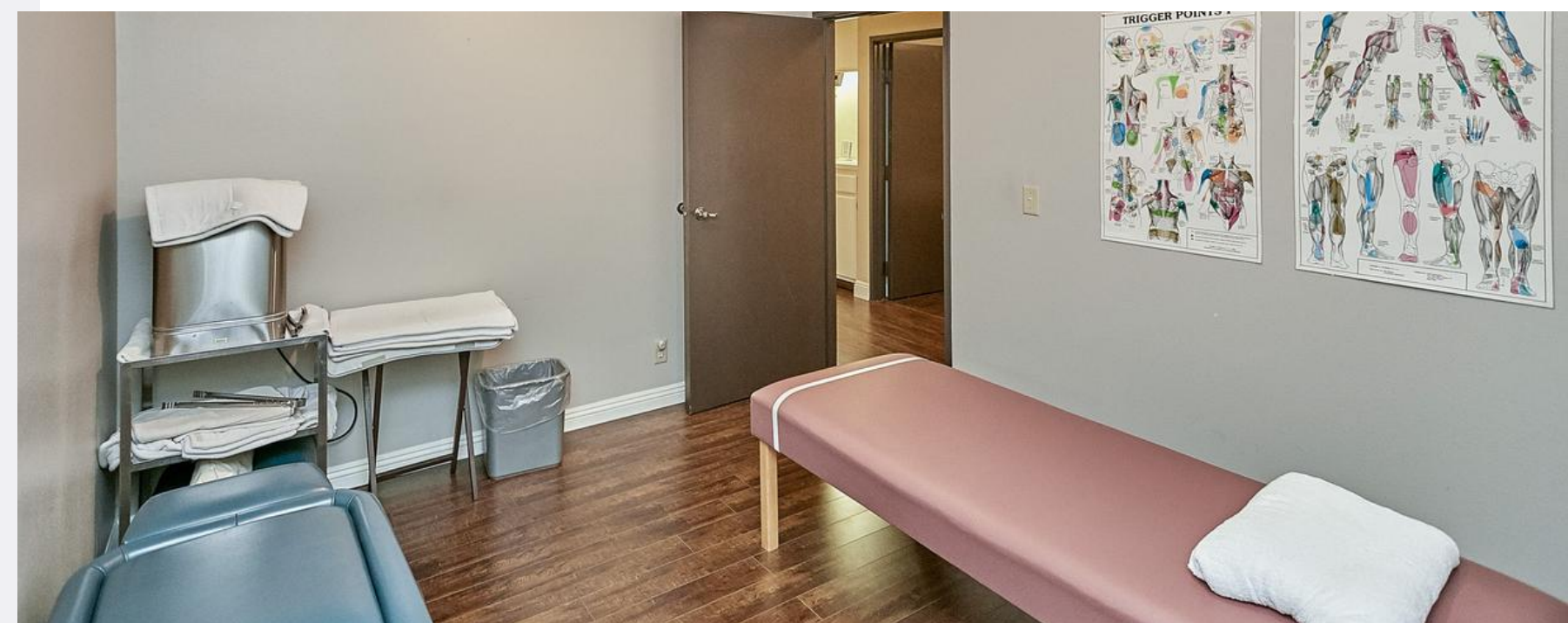
Stephen Lee
Vice President
Dre.01778129
213.399.6884

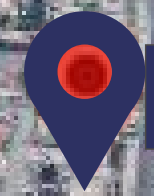
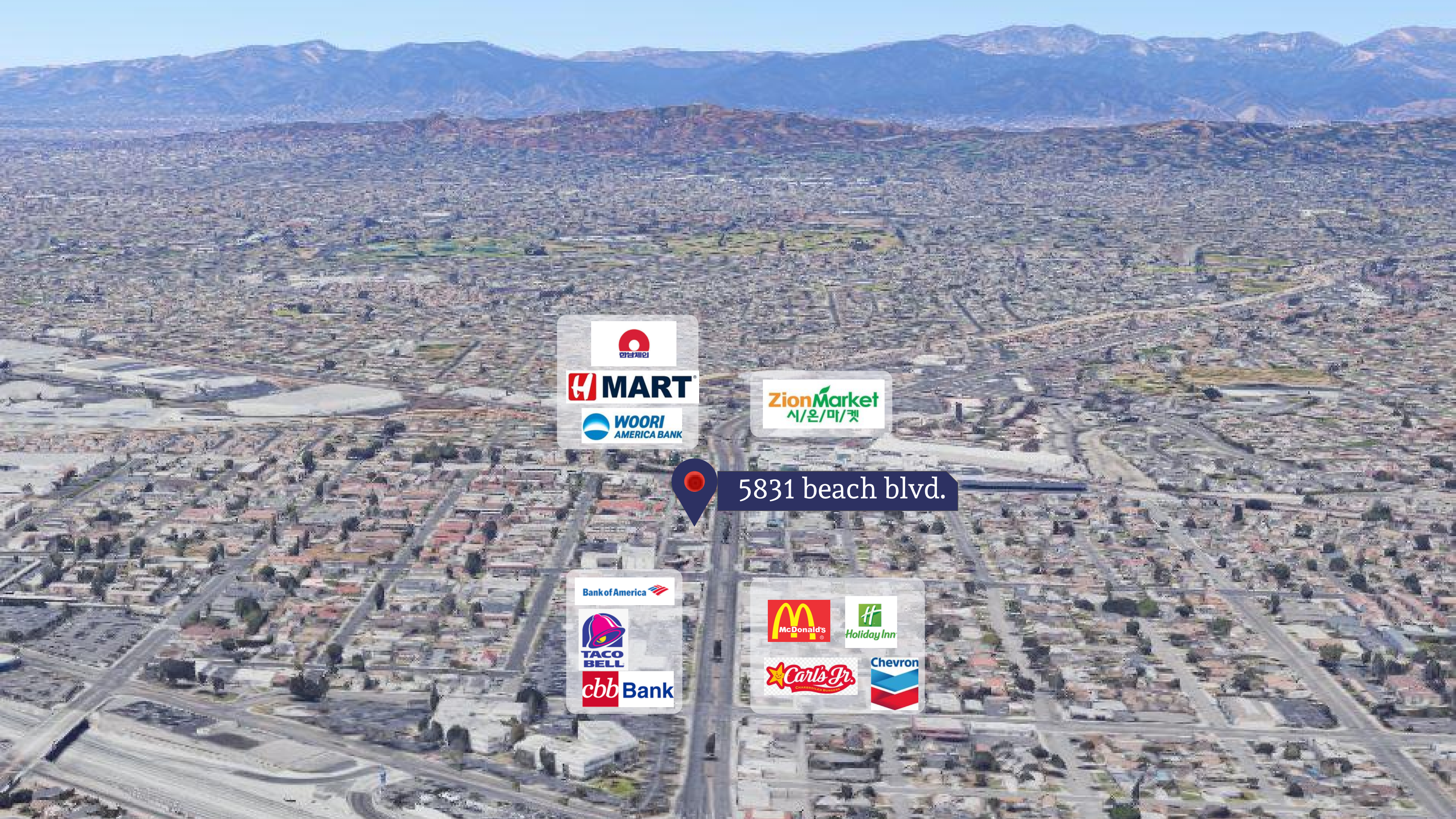
Rachael Yun
Senior Advisor
Dre.02037889
714.334.1281
Rachael.Yun@exprealty.com

Lance Kim
Marketing Specialist
Dre.02040751
714.605.6000
Lance.kim@exprealty.com

Property Overview/ Highlights

- ±1700 s.f. Office/Medical Office Building
- General Retail Possible
- Freestanding Building
- ±8.24 : 1,000 Parking Ratio
- Heavy Traffic Along Beach Blvd.
- Excellent Access to I-5 and SR 91
- Located in the Heart of Buena Park
- Seller financing available





5831 beach blvd.



The CORE A Team



Stephen Lee

Vice President

Certified General Real Estate

Appraiser Lic.3003069

213.399.6884 Dre.01778129



Rachael Yun

Senior Advisor | Office Specialist

Property Management

Rachael.Yun@exprealty.com

714.334.1281 Dre.02037889



Lance Kim

Senior Advisor | Marketing Specialist

Lance.Kim@exprealty.com

714.605.6000 Dre.02040751