

# FOR LEASE



## 17706 Brickyard RD, Bothell, WA 98011

*Entire 2nd floor available for lease in professional office building. Minutes from downtown Woodinville, SR-522, & I-405, world class wineries, shopping, & restaurants!*

**Office Rate: \$24/sqft**

*-Approximately 3,484 sqft, great layout, multiple offices, conference room, and storage.*

**Warehouse Rate: \$15/sqft**

- Approximately total 1,792 sqft warehouse, high ceilings, approx. 422 sqft mezzanine.*

**Storage Warehouse: \$15/sqft**

*Approximately 2,112 sqft, high ceilings, with ample space.*

**NNN: \$7.50**

**Total - 7,820 sqft available**



Matthew Royal:  
[matthew@royalcommercialcorp.com](mailto:matthew@royalcommercialcorp.com)

royal commercial corp.  
611 Market Street | Suite 8  
Kirkland | WA 98033  
425 - 952 - 4000

[www.royalcommercialcorp.com](http://www.royalcommercialcorp.com)

No warranty or representation, express or implied, is made as to the accuracy of the information contained herein, and same is submitted subject to errors omissions, change of price, rental or other conditions, withdrawal without notice, and to any specific listing conditions, imposed by our principals.



FOR LEASE



17706 Brickyard RD, Bothell, WA 98011



Matthew Royal:  
[matthew@royalcommercialcorp.com](mailto:matthew@royalcommercialcorp.com)

royal commercial corp.  
611 Market Street | Suite 8  
Kirkland | WA 98033  
425 - 952 - 4000

[www.royalcommercialcorp.com](http://www.royalcommercialcorp.com)

No warranty or representation, express or implied, is made as to the accuracy of the information contained herein, and same is submitted subject to errors omissions, change of price, rental or other conditions, withdrawal without notice, and to any specific listing conditions, imposed by our principals.



# FOR LEASE

Second Floor 3,484 sqft



17706 Brickyard RD, Bothell, WA 98011



Matthew Royal:  
[matthew@royalcommercialcorp.com](mailto:matthew@royalcommercialcorp.com)

royal commercial corp.  
611 Market Street | Suite 8  
Kirkland | WA 98033

425 - 952 - 4000

[www.royalcommercialcorp.com](http://www.royalcommercialcorp.com)

No warranty or representation, express or implied, is made as to the accuracy of the information contained herein, and same is submitted subject to errors omissions, change of price, rental or other conditions, withdrawal without notice, and to any specific listing conditions, imposed by our principals.



# FOR LEASE



## 17706 Brickyard RD, Bothell, WA 98011



Matthew Royal:  
[matthew@royalcommercialcorp.com](mailto:matthew@royalcommercialcorp.com)

royal commercial corp.  
611 Market Street | Suite 8  
Kirkland | WA 98033

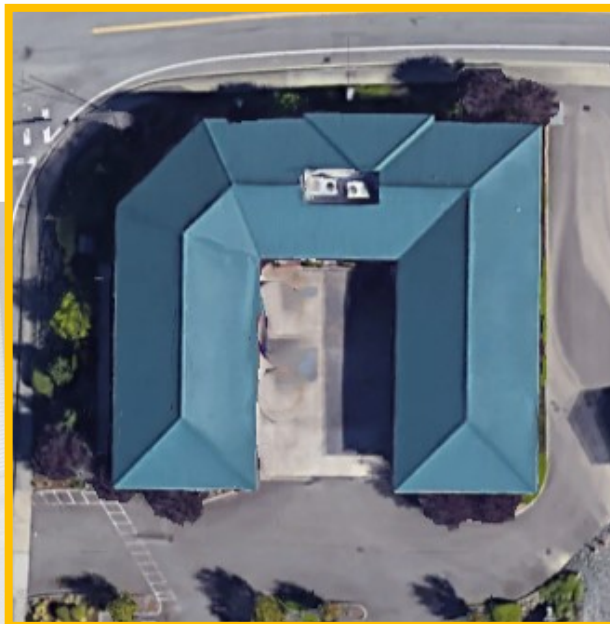
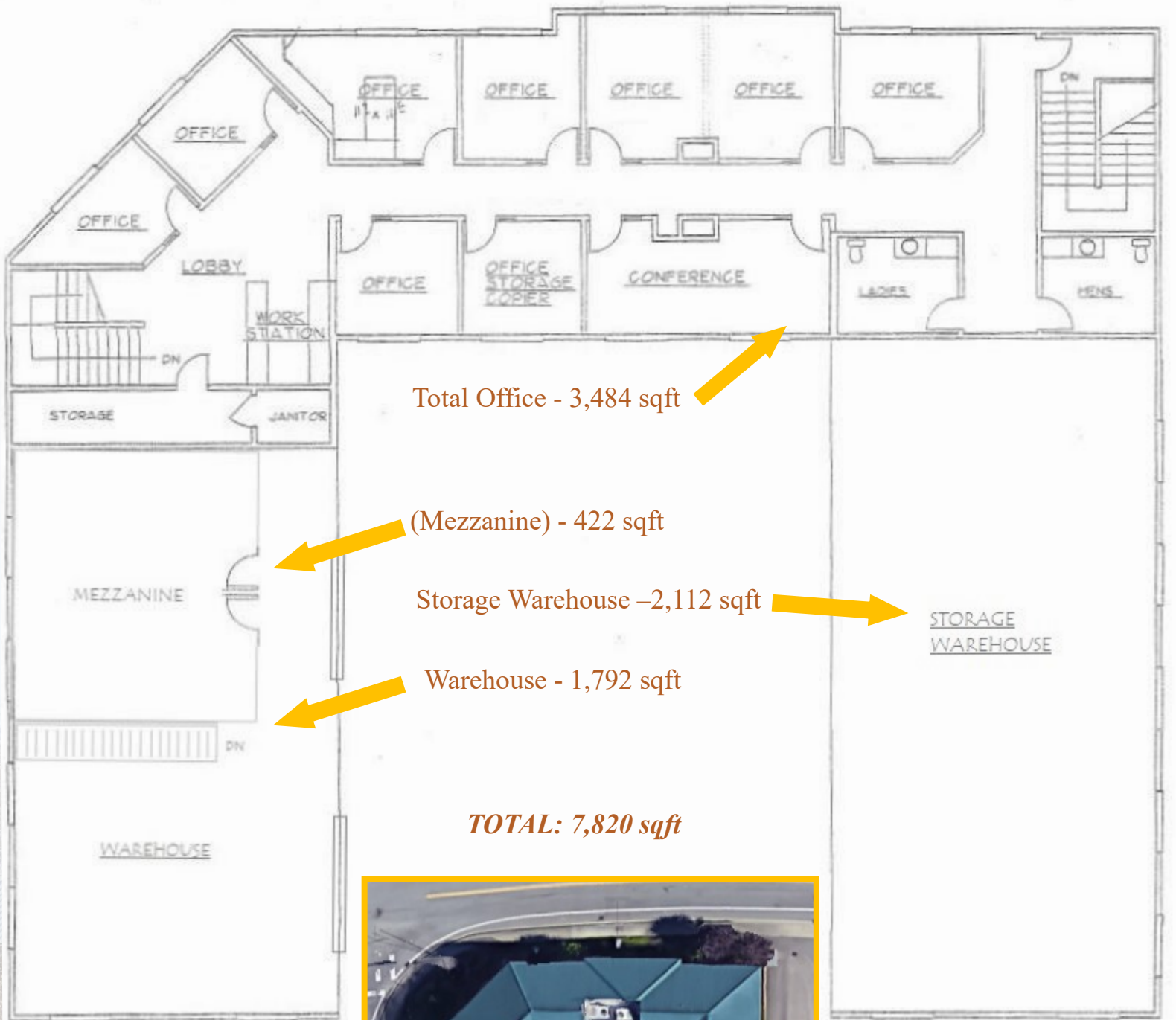
425 - 952 - 4000

[www.royalcommercialcorp.com](http://www.royalcommercialcorp.com)

No warranty or representation, express or implied, is made as to the accuracy of the information contained herein, and same is submitted subject to errors omissions, change of price, rental or other conditions, withdrawal without notice, and to any specific listing conditions, imposed by our principals.



# 17706 Brickyard RD, Bothell, WA 98011



Matthew Royal:  
[matthew@royalcommercialcorp.com](mailto:matthew@royalcommercialcorp.com)

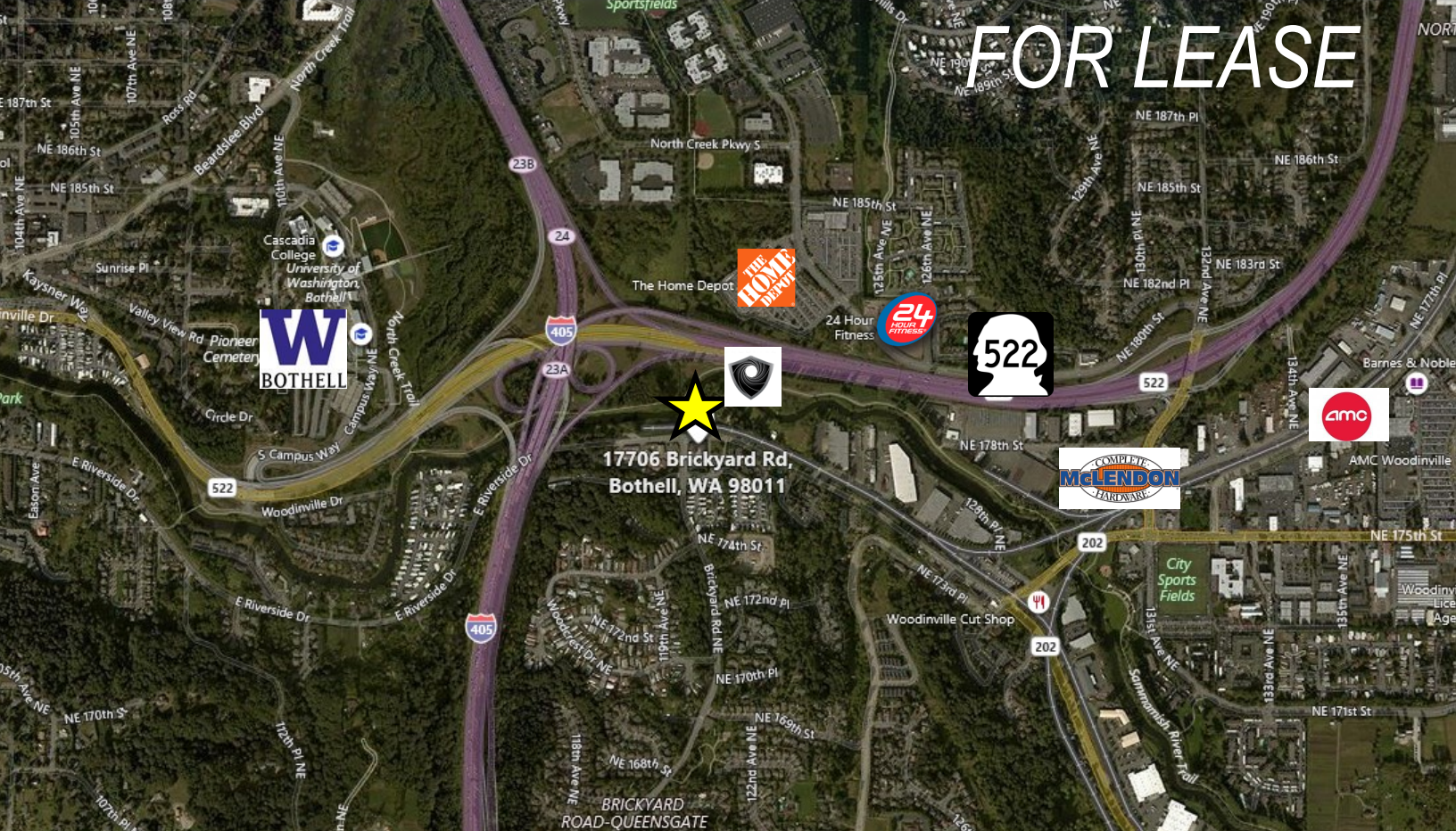
royal commercial corp.  
611 Market Street | Suite 8  
Kirkland | WA 98033

425 - 952 - 4000

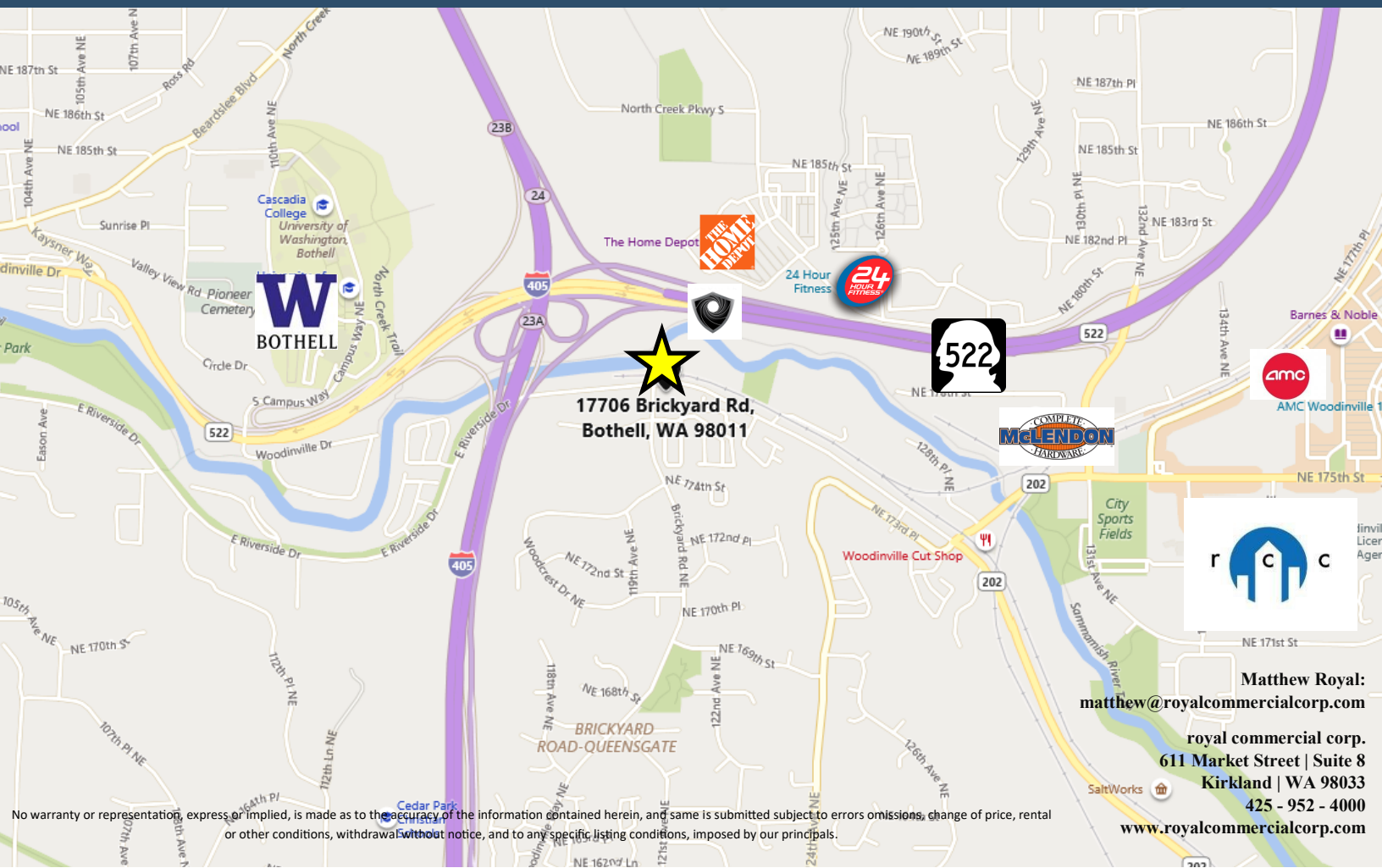
[www.royalcommercialcorp.com](http://www.royalcommercialcorp.com)



# FOR LEASE



## 17706 Brickyard RD, Bothell, WA 98011



17706 Brickyard Rd,  
Bothell, WA 98011

Matthew Royal:  
[matthew@royalcommercialcorp.com](mailto:matthew@royalcommercialcorp.com)

royal commercial corp.  
611 Market Street | Suite 8  
Kirkland | WA 98033

425 - 952 - 4000

[www.royalcommercialcorp.com](http://www.royalcommercialcorp.com)

No warranty or representation, express or implied, is made as to the accuracy of the information contained herein, and same is submitted subject to errors omissions, change of price, rental or other conditions, withdrawal without notice, and to any specific listing conditions, imposed by our principals.