

# Westin Building Exchange

2001 6th Ave, Seattle WA.

*Sub-Lease / 21<sup>st</sup> Floor / 2,052sqft*



## CONTACT

**Ron Cox**

425-281-1095

[ron@royalcommercialcorp.com](mailto:ron@royalcommercialcorp.com)

**Matthew Royal**

425.952.4000

[matthew@royalcommercialcorp.com](mailto:matthew@royalcommercialcorp.com)



royal commercial corp.

[www.royalcommercialcorp.com/WestinBuildingExchange](http://www.royalcommercialcorp.com/WestinBuildingExchange)

[royalcommercialcorp.com](http://royalcommercialcorp.com)

No warranty or representation, express or implied, is made as to the accuracy of the information contained herein, and same is submitted subject to errors omissions, change of price, rental or other conditions, withdrawal without notice, and to any specific listing conditions, imposed by our principals.



# Westin Building Exchange

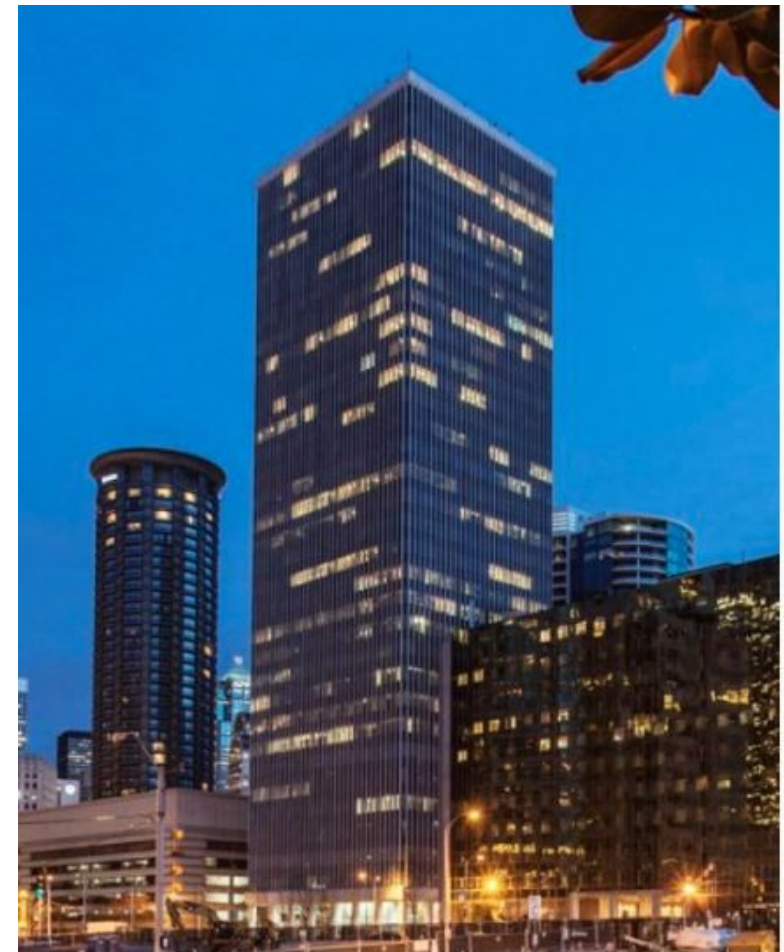
Sub-Lease / 21<sup>st</sup> Floor / 2,052<sup>sqft</sup>

## Benefits @ Westin Bldg Exchange

World class regional data center / co-location facility  
24x7 Onsite Security  
Double card access doors/ entry  
Conference room / 16th fl with stunning  
Executive conference room on the 33rd fl.  
Views On site Property Management office  
Café and Barber on premises  
Onsite Storage available  
Ample Parking + Bike Lockers  
Connected w/4 Star Hotel via Skybridge  
Walk Score = 100! (Perfect!)  
Two Blocks from Light rail  
Easy access to I-5/405 and Ferry Terminal,

## Benefits of the Suite

21st floor / NW corner  
Elevator lobby exposure  
Recent TI's/ upgrades  
Reception / Lobby  
Two Offices / Conf Rm / Open area  
Kitchenette / work area  
Furniture Available  
Flexible Terms  
Two Unreserved Parking @ rate  
Lobby Signage  
Sublease through June 2022



## CONTACT

**Ron Cox** 425-281-1095  
ron@royalcommercialcorp.com

**Matthew Royal** 425.952.4000  
matthew@royalcommercialcorp.com



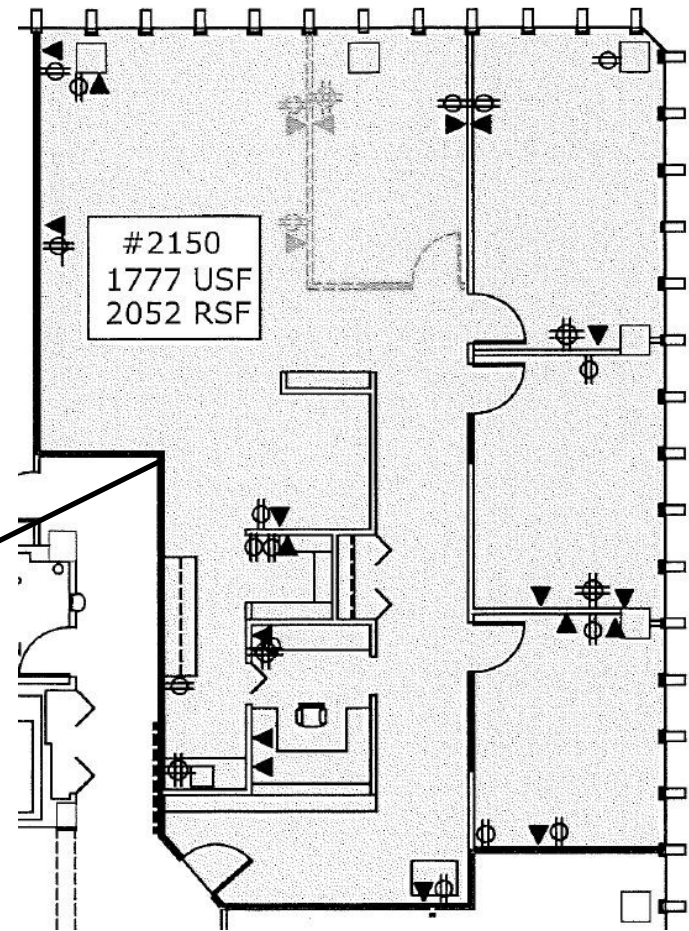
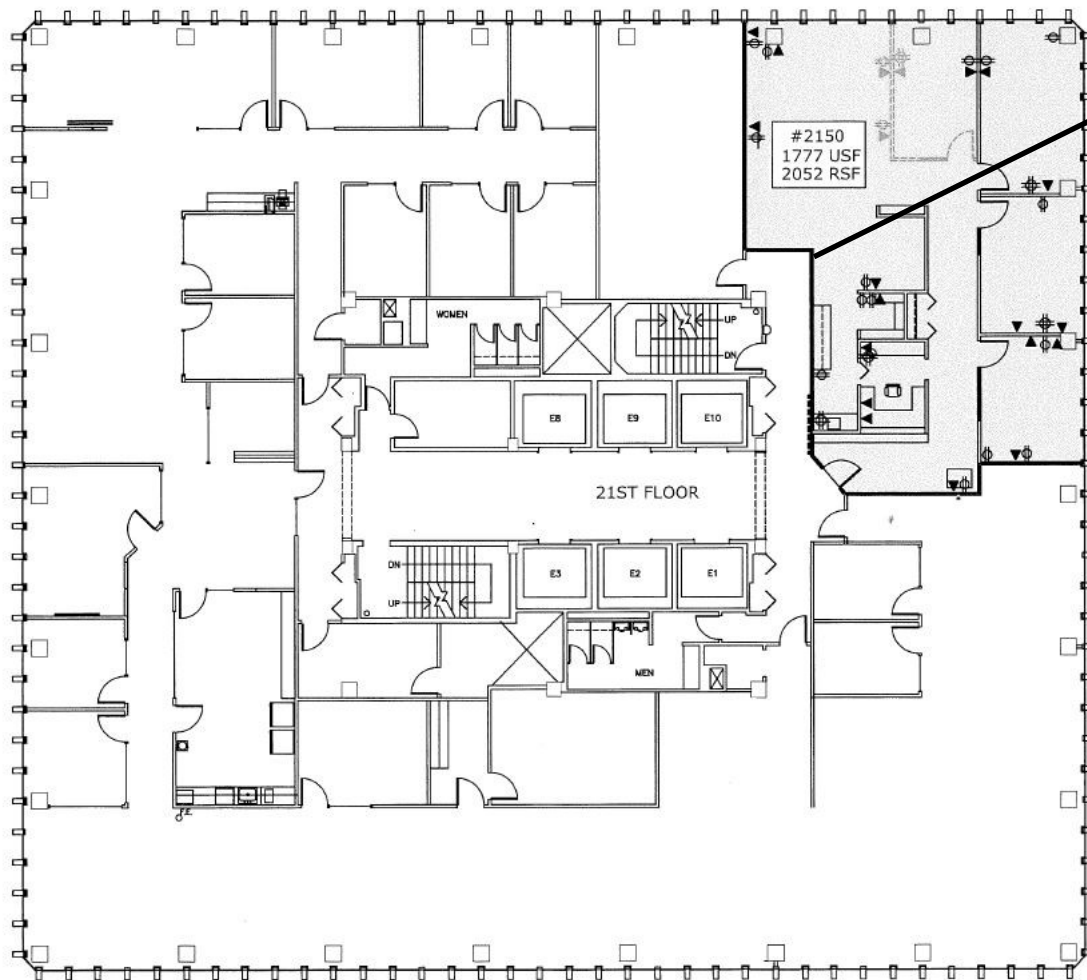
royal commercial corp.



# Westin Building Exchange

2001 6th Ave, Seattle WA.

*Sub-Lease / 21<sup>st</sup> Floor / 2,052sqft*



## CONTACT

**Ron Cox**

425-281-1095

jimc@royalcommercialcorp.com

**Matthew Royal**

425.952.4000

matthew@royalcommercialcorp.com



royal commercial corp.