



# 2901

K Street

**Clyde Rawlings**

RE License #00986815

+1 916 491 4320

[Clyde.Rawlings@am.jll.com](mailto:Clyde.Rawlings@am.jll.com)

**Mason Roddy**

RE license #01980024

+1 916 440 1825

[Mason.Roddy@am.jll.com](mailto:Mason.Roddy@am.jll.com)

# BUILDING INFORMATION



## SPACE AVAILABLE

948 - 21,456 RSF



## ON-SITE RETAIL

Orange Theory Fitness, Round Table Pizza, and Metro by TMobile (UPS Access Point), and SAFE Credit Union



## ON-SITE PARKING

315 spaces (~98,000 SF structure)



## SIGNAGE

Prominent signage opportunity with midtown/freeway visibility and  $\pm 179,000$  ADT

# FEATURES

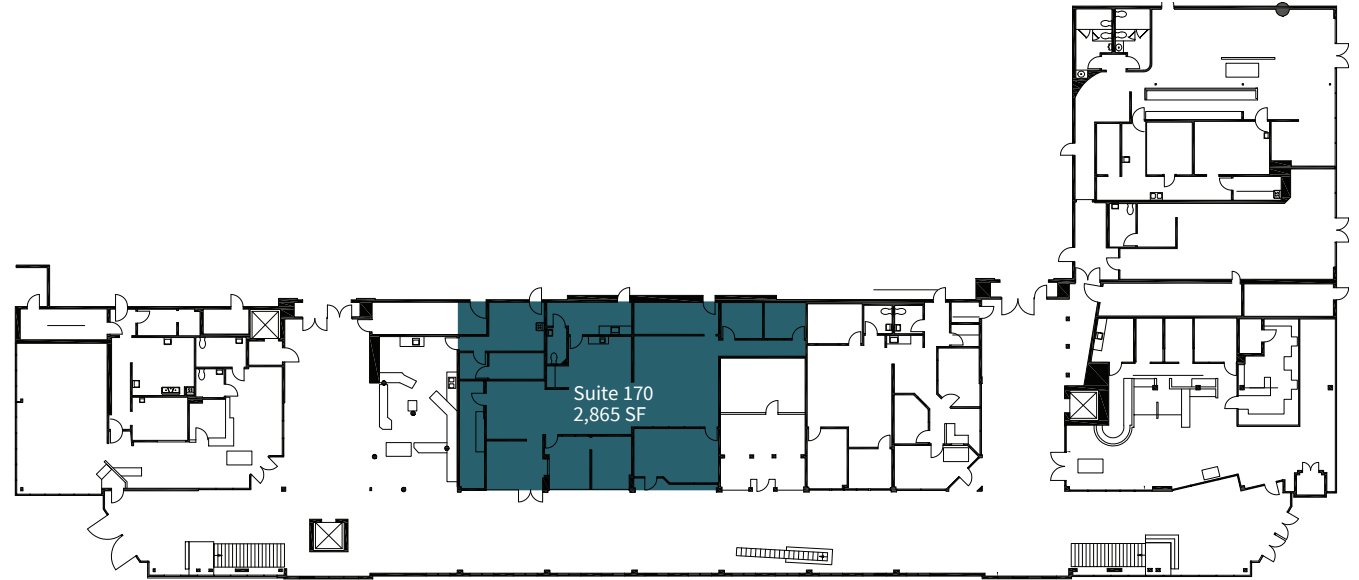
- Abundant natural light
- 4-story atrium
- Newly installed glass walls and doors to maximize natural light
- Over-standard parking availability
- 2 elevators
- Varied layouts that accommodate retail, client-facing services, private offices, meeting spaces, and open office space



# FLOOR PLANS

## FLOOR 1

Suite 170: 2,865 RSF

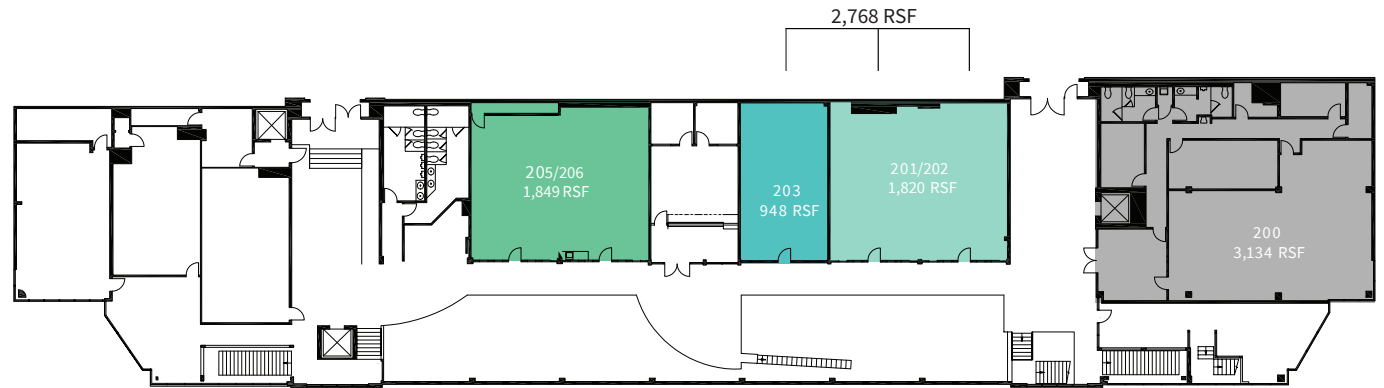


# FLOOR PLANS

## FLOOR 2

Suite 200: 3,134 RSF  
Suite 201/202: 1,820 RSF  
Suite 203: 948 RSF  
Suite 205/206: 1,849 RSF

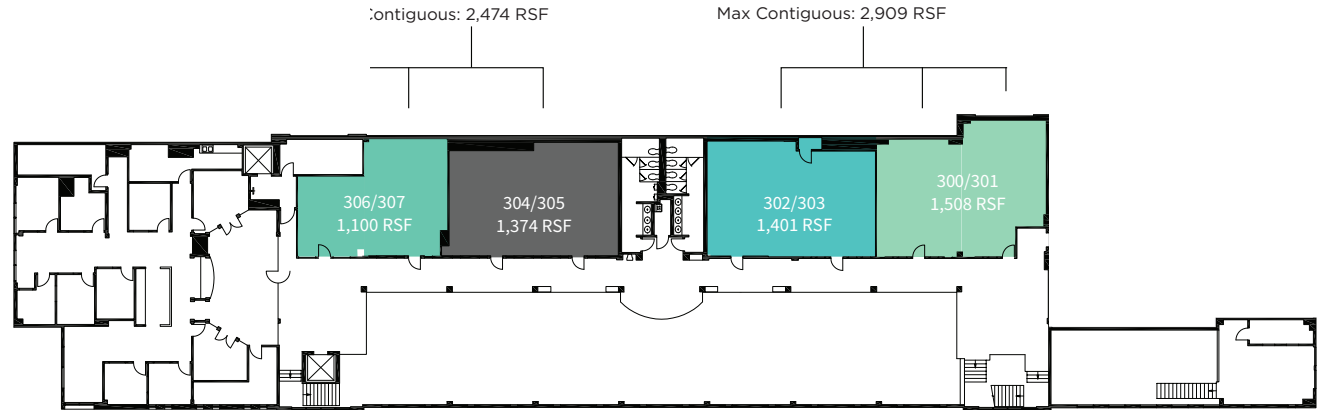
**Total: 7,751 RSF**



# FLOOR PLANS

## FLOOR 3

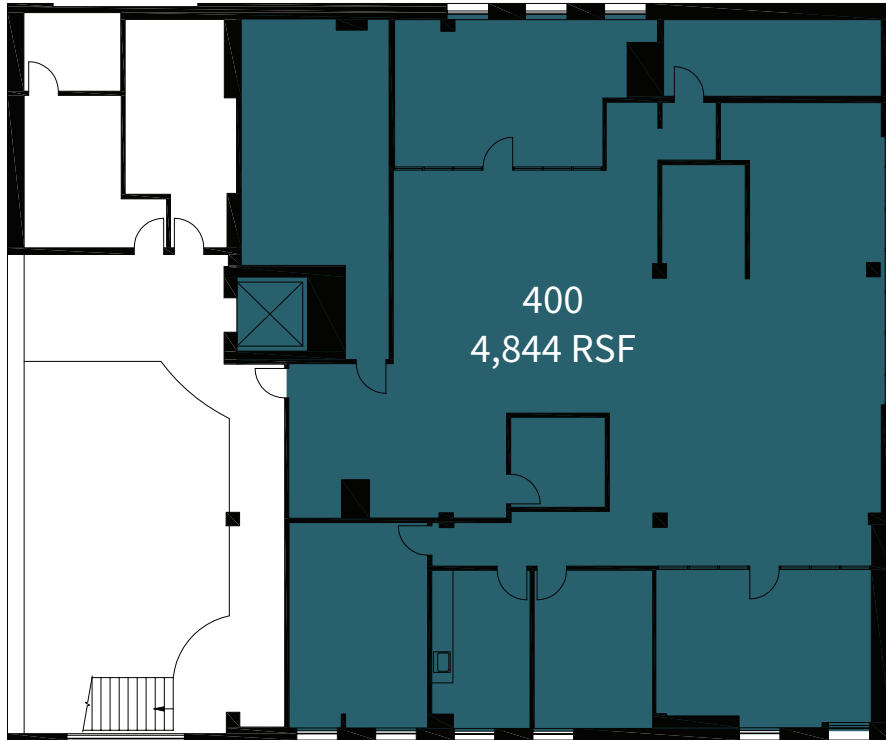
Suite 300/301:	1,508 RSF
Suite 301:	726 RSF
Suite 302/303:	1,401 RSF
Suite 304/305:	1,374 RSF
Suite 306/307:	1,100 RSF
<b>Total:</b>	<b>5,383 RSF</b>



# FLOOR PLANS

## FLOOR 4

Suite 400: 4,844 RSF



# AMAZING NEIGHBORHOOD

2901 K offers flexible solution space that can accommodate tenants needing 911 - 21,456 RSF with abundant natural light. With an adjacent freeway onramp and on-site parking.

2901 K is a commuter's dream and prominent signage placement could provide great visibility to your company. Located on the border of Midtown and East Sacramento, you can take advantage of the wonderful restaurants and amenities that both have to offer.



# 2901

K Street

## CONTACT

Clyde Rawlings  
RE License #00986815  
+1 916 491 4320  
Clyde.Rawlings@am.jll.com

Mason Roddy  
RE License #01980024  
+1 916 440 1825  
Mason.Roddy@am.jll.com

©2020 Jones Lang LaSalle IP, Inc. All rights reserved. All information contained herein is from sources deemed reliable; however, no representation or warranty is made to the accuracy thereof.

