



**COLDWELL
BANKER
COMMERCIAL**

EMMCO REALTY GROUP

FOR LEASE

EMMCOREALTYGROUP.COM

2929 CLEVELAND AVENUE SW

Canton, OH 44707

AVAILABLE SPACE

1,600 SF

FEATURES

- New Lease with Gionino's Pizza!
- 1,600 SF Remaining
- New parking lot
- Monument signage on Cleveland Ave. SW
- Terrific corner location
- Restaurant, retail, or office use.
- 2019 Renovation.
- Will divide.



OFFICE

Jeffrey Soclof, CCIM
O: 216 292 3700 | C: 216 857 2075
jeffrey@emmcorealtygroup.com

Kristen Kantounatakis
O: 216 292 3700 | C: 330 921 1234
kristen@emmcorealtygroup.com

©2020 Coldwell Banker. All Rights Reserved. Coldwell Banker and the Coldwell Banker Commercial logos are trademarks of Coldwell Banker Real Estate LLC. The Coldwell Banker® System is comprised of company owned offices which are owned by a subsidiary of Realogy Brokerage Group LLC and franchised offices which are independently owned and operated. The Coldwell Banker System fully supports the principles of the Equal Opportunity Act.



**COLDWELL BANKER COMMERCIAL
EMMCO REALTY GROUP**

3681 S. Green Road, Suite 201, Beachwood, OH 44122
216.292.3700



2929 CLEVELAND AVENUE SW

Canton, OH 44707

LEASE



PROPERTY DESCRIPTION

Located on one of south Canton's main corridors, this property has excellent potential for a variety of uses! Call for a showing today!

LOCATION DESCRIPTION

Free standing former restaurant building serving South Canton. Located on Cleveland Ave. SW with terrific access to I-77. Just 9 miles south of Belden Village and serves communities south to New Philadelphia. Located within one mile of NEW Canton South High School serving 856 students. Major employers include: Aultman, The Timkin Co., Mercy Medical Center, Fisher Foods, General Electric, Die Bold, and Chesapeake Energy Headquarters.

OFFERING SUMMARY

Lease Rate:	Negotiable
Available SF:	1,600 SF
Lot Size:	0.55 Acres

DEMOGRAPHICS	1 MILE	5 MILES	10 MILES
Total Households	1,086	49,832	129,228
Total Population	2,544	119,388	311,447
Average HH Income	\$34,587	\$42,821	\$55,842
Total Businesses	160	1,690	3,318
Total Employees	2,118	33,625	57,325

EMMCOREALTYGROUP.COM

Jeffrey Soclof, CCIM
O: 216 292 3700 | C: 216 857 2075
jeffrey@emmcortaltygroup.com

Kristen Kantounatakis
O: 216 292 3700 | C: 330 921 1234
kristen@emmcortaltygroup.com



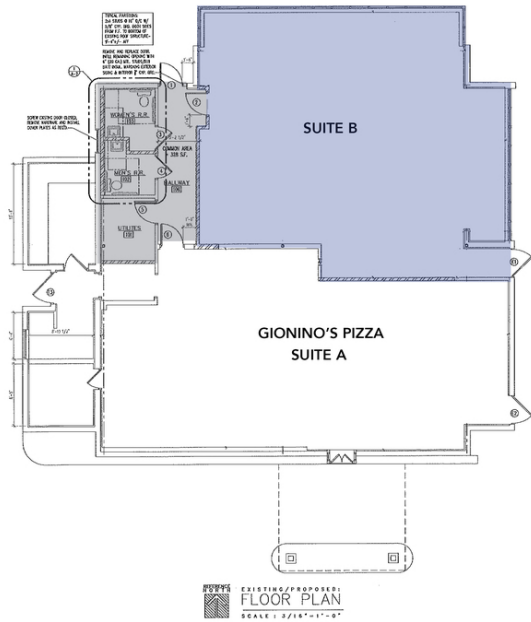
**COLDWELL
BANKER
COMMERCIAL**

EMMCO REALTY GROUP



2929 CLEVELAND AVENUE SW
Canton, OH 44707

LEASE



AVAILABLE SPACES

SUITE	TENANT	SIZE (SF)	LEASE TYPE
Suite A	Gionino's Pizza	2,000 SF	Modified Gross
Suite B	Available	1,600 SF	Modified Gross

EMMCOREALTYGROUP.COM

Jeffrey Soclof, CCIM
O: 216 292 3700 | C: 216 857 2075
jeffrey@emmcorealtygroup.com

Kristen Kantounatakis
O: 216 292 3700 | C: 330 921 1234
kristen@emmcorealtygroup.com



COLDWELL
BANKER
COMMERCIAL
EMMCO REALTY GROUP



2929 CLEVELAND AVENUE SW

Canton, OH 44707

LEASE



EMMCOREALTYGROUP.COM

Jeffrey Soclof, CCIM
O: 216 292 3700 | C: 216 857 2075
jeffrey@emmcorealtygroup.com

Kristen Kantounatakis
O: 216 292 3700 | C: 330 921 1234
kristen@emmcorealtygroup.com



**COLDWELL
BANKER
COMMERCIAL**

EMMCO REALTY GROUP