



Rob

Lic#01121630



Louis

Lic#02054162

Property Solutions  
For People Tired  
Of Mediocre  
rob@johnston-pacific.com  
louis@johnston-pacific.com



949-366-2020

## 2,288sf **Luxury** Business Condo: **OWN IT.**



- 2,288sf Total Size
- 1,280sf First-Class Office
- 1,008sf Warehouse
- 16' Stacking Clearance
- Highly-Upgraded Interior
- Executive Corner Location
- Own Part Of South OC!

### About The Property

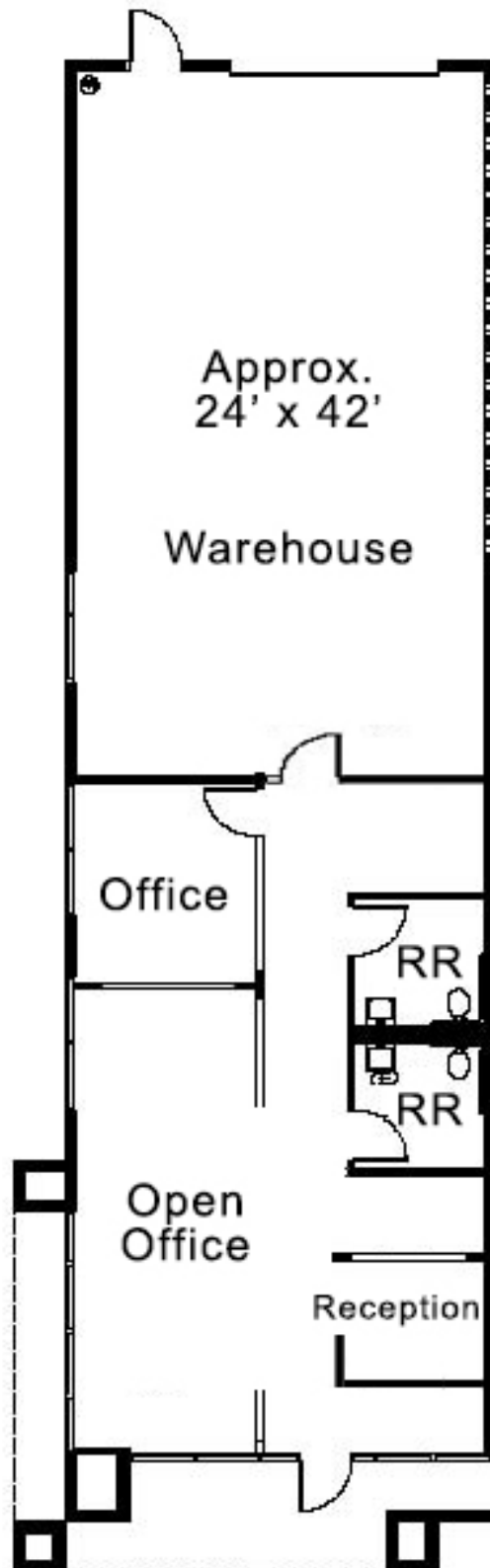
Constructed new in this millennium, you'll want to own this prime business location for the next 1,000 years. Minutes from the beach, two golf courses, and dozens of dining options, this property will remind you why you love living in South Orange County. The incredibly upgraded interior is worthy of business royalty. It's a luxury not everyone can afford, but you can. How will you use the warehouse - for business storage or as a spot for your car so the neighbors don't get jealous? Feel free to indulge yourself, reserved tours start here: 949-366-2020

949-366-2020



CONTACT@JOHNSTON-PACIFIC.COM

# Approx. Floor Plan



[CONTACT@JOHNSTON-PACIFIC.COM](mailto:CONTACT@JOHNSTON-PACIFIC.COM)

**JOHNSTON PACIFIC**  
COMMERCIAL REAL ESTATE, INC.

Office: 949-366-2020  
Lic#01121630

The information above had been obtained from sources believed to be reliable. While we do not doubt its accuracy, we have not verified it, make no guarantee, warranty or representation about it. It is your responsibility to independently confirm its accuracy and completeness. All information is subject to change without notice.