

# PRIME RETAIL SHOPPING CENTER IN THE HEART OF HUNTINGTON PARK

6001-21 PACIFIC BOULEVARD, HUNTINGTON PARK, CA 90255



**GREG OFFSAY** · Vice President

(818) 697-9387 · [greg@illicre.com](mailto:greg@illicre.com)

DRE #01837719

17547 Ventura Blvd., Ste. 304 · Encino CA 91316 · 818.501.2212/Phone · 818.501.2202/Fax · [www.illicre.com](http://www.illicre.com) · DRE #01834124

This information has been secured from sources we believe to be reliable, but we make no representations or warranties, expressed or implied, as to the accuracy of the information. References to square footage are approximate. References to neighboring retailers are subject to change, and may not be adjacent to the vacancy being marketed either prior to, during, or after leases are signed. Lessee must verify the information and bears all risk for any inaccuracies.





# PRIME RETAIL SHOPPING CENTER IN THE HEART OF HUNTINGTON PARK

6001-21 PACIFIC BOULEVARD, HUNTINGTON PARK, CA 90255

## PROPERTY FEATURES

- + ±1,480-7,025 SF Available for Office or Retail Use
- + Building and Pylon Signage Available
- + Signalized Intersection
- + Co-Tenants Include Starbucks, H&R Block, Yogurtland, and Adriana's Insurance
- + Parking!!!

## AREA AMENITIES

- + Tremendous Retail Area
- + Dense Residential Community
- + Neighboring Retailers Include CVS, Superior Supermarket, 99 Cent Only Store, Staples, In-n-Out, and More



DEMOS	1 mile	3 mile	5 mile
Population	39,812	426,539	1,175,650
Avg. HH Income	\$50,210	\$52,169	\$53,786
Daytime Pop.	22,816	107,814	452,869
Traffic Count	±18,092 cars per day		

**GREG OFFSAY** · Vice President  
(818) 697-9387 · greg@illicre.com  
DRE #01837719

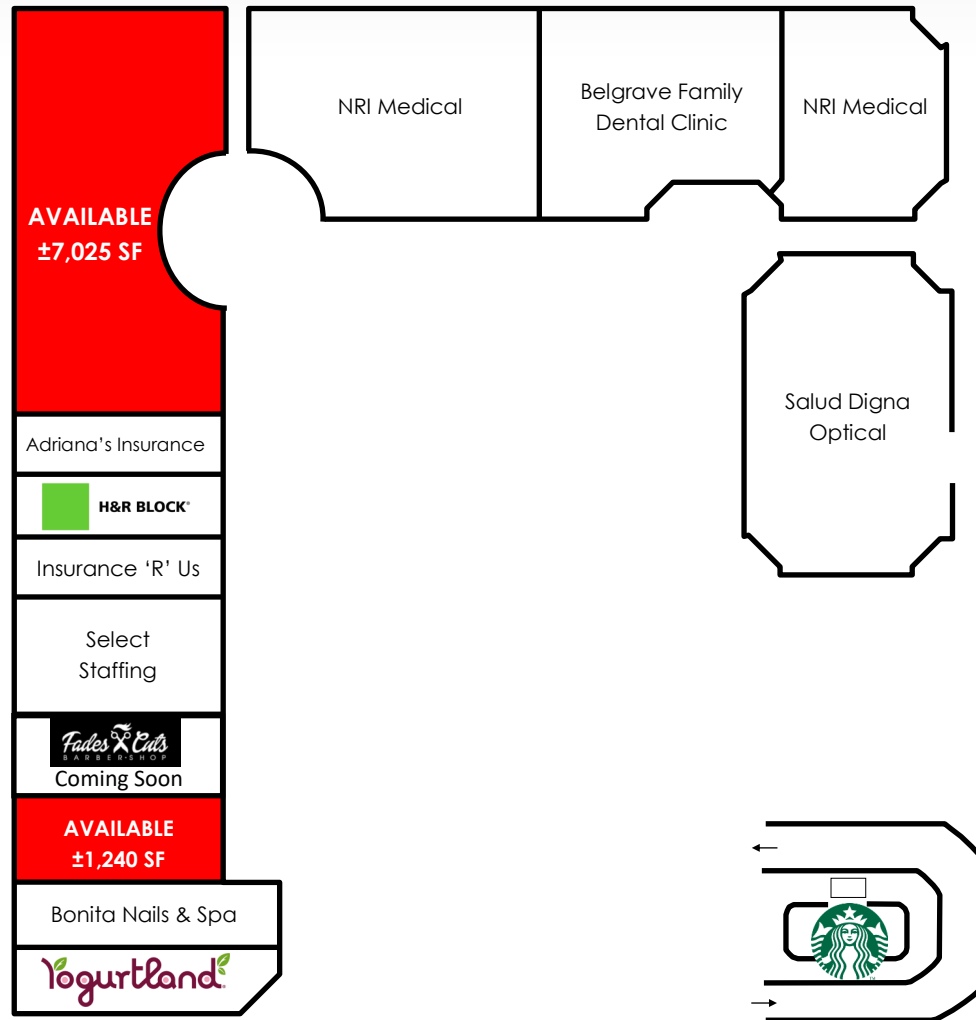
17547 Ventura Blvd., Ste. 304 · Encino CA 91316 · 818.501.2212/Phone · 818.501.2202/Fax · www.illicre.com · DRE #01834124

This information has been secured from sources we believe to be reliable, but we make no representations or warranties, expressed or implied, as to the accuracy of the information. References to square footage are approximate. References to neighboring retailers are subject to change, and may not be adjacent to the vacancy being marketed either prior to, during, or after leases are signed. Lessee must verify the information and bears all risk for any inaccuracies.



# PRIME RETAIL SHOPPING CENTER IN THE HEART OF HUNTINGTON PARK

6001-21 PACIFIC BOULEVARD, HUNTINGTON PARK, CA 90255



**GREG OFFSAY** · Vice President

(818) 697-9387 · greg@illicre.com

DRE #01837719

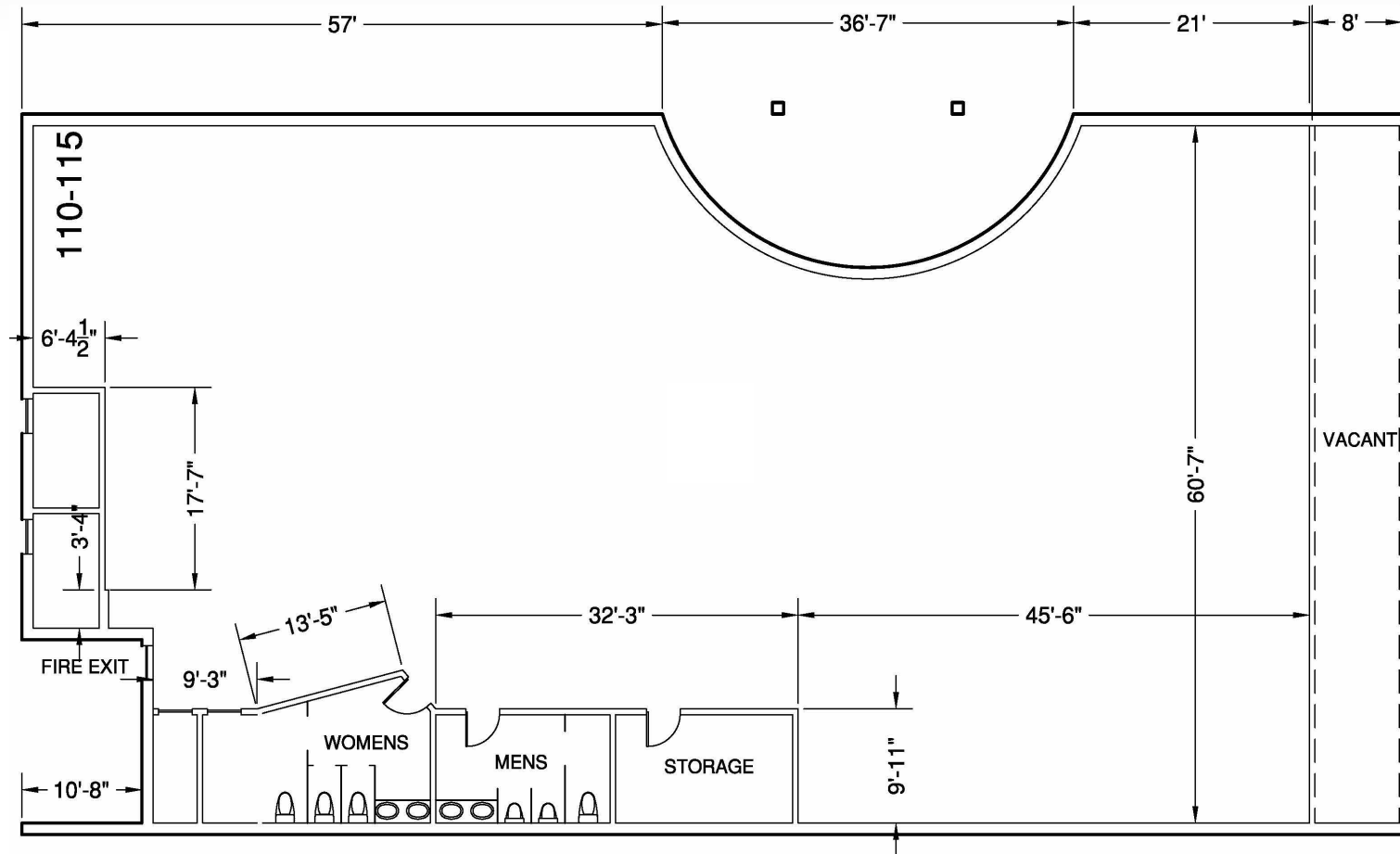
17547 Ventura Blvd., Ste. 304 · Encino CA 91316 · 818.501.2212/Phone · 818.501.2202/Fax · www.illicre.com · DRE #01834124

This information has been secured from sources we believe to be reliable, but we make no representations or warranties, expressed or implied, as to the accuracy of the information. References to square footage are approximate. References to neighboring retailers are subject to change, and may not be adjacent to the vacancy being marketed either prior to, during, or after leases are signed. Lessee must verify the information and bears all risk for any inaccuracies.



# PRIME RETAIL SHOPPING CENTER IN THE HEART OF HUNTINGTON PARK

6001-21 PACIFIC BOULEVARD, HUNTINGTON PARK, CA 90255



110-115 FLOOR PLAN

**GREG OFFSAY** · Vice President

(818) 697-9387 · greg@illicre.com

DRE #01837719

17547 Ventura Blvd., Ste. 304 · Encino CA 91316 · 818.501.2212/Phone · 818.501.2202/Fax · www.illicre.com · DRE #01834124

This information has been secured from sources we believe to be reliable, but we make no representations or warranties, expressed or implied, as to the accuracy of the information. References to square footage are approximate. References to neighboring retailers are subject to change, and may not be adjacent to the vacancy being marketed either prior to, during, or after leases are signed. Lessee must verify the information and bears all risk for any inaccuracies.





# PRIME RETAIL SHOPPING CENTER IN THE HEART OF HUNTINGTON PARK

6001-21 PACIFIC BOULEVARD, HUNTINGTON PARK, CA 90255



**GREG OFFSAY** · Vice President

(818) 697-9387 · greg@illicre.com

DRE #01837719

17547 Ventura Blvd., Ste. 304 · Encino CA 91316 · 818.501.2212/Phone · 818.501.2202/Fax · [www.illicre.com](http://www.illicre.com) · DRE #01834124

This information has been secured from sources we believe to be reliable, but we make no representations or warranties, expressed or implied, as to the accuracy of the information. References to square footage are approximate. References to neighboring retailers are subject to change, and may not be adjacent to the vacancy being marketed either prior to, during, or after leases are signed. Lessee must verify the information and bears all risk for any inaccuracies.

