

120 W COMMERCIAL, LYONS, KS 67554

7,405 SQ. FT LOT

OFFERED AT

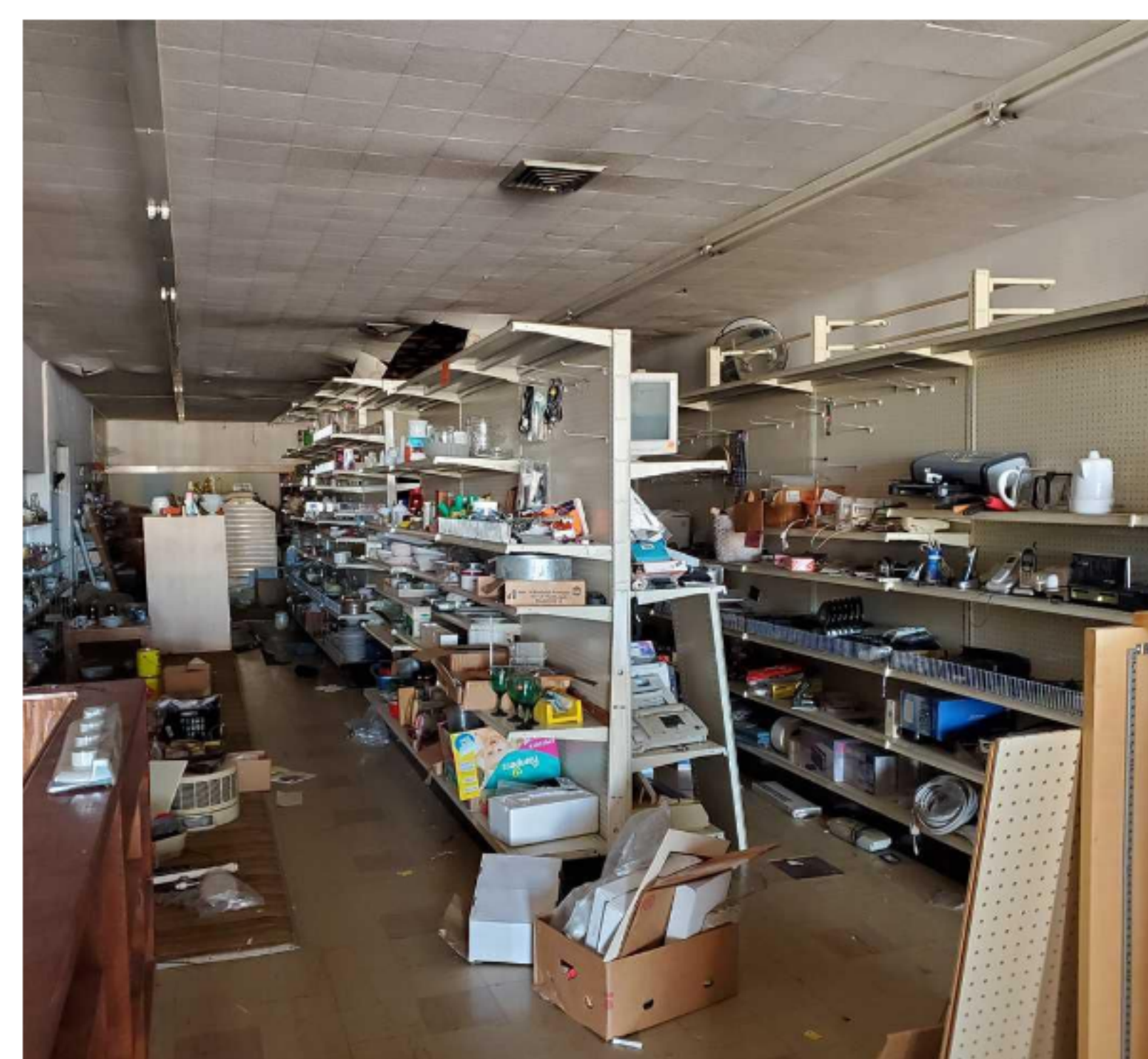
\$49,900



To get listing and finance info about this property, text **LIST4484713** to **800.701.6509**

ABOUT THIS PROPERTY

So much potential ! Built in 1920, with a 1950 remodel and in a high trafficked commercial location in Lyons, Ks you will find this retail downtown row store. It has 6,000 sq. ft on the main floor, a 4,000 sq. ft basement used for storage (with a West side entrance from the outside) and 4,000 sq. ft on the 2nd level that were once apartments. The apartments will need a lot of updating and are only accessible from the roof. The roof is a mopped roof, painted silver. The flooring is wood and linoleum. The property is full of showcases, shelving and merchandise/inventory that goes with the sale. Selling in AS IS condition.



JR STEWART

Realtor

LIC# 00240997

m: (316) 641-5497 | o: (620) 663-8391

e: costewartjr65@gmail.com

w: www.midkansasareahomes.com



COLDWELL BANKER
AMERICANA

107 E 30th, HUTCHINSON, KS 67502



JOHN NEWTON

Loan Officer

NMLS# 1882751

m: (785) 418-2898

e: j.newton@hfmloans.com

w: www.homesteadfinancial.com/loan-officers/john-newton

HOMESTEAD
FINANCIAL MORTGAGE

8585 College Blvd, Overland Park, KS 66210
Branch NMLS# 252707 | (913) 317-1011



Copyright © 2020 - Homestead Financial is a registered trademark of Endeavor Capital LLC. NMLS # 222524
(www.nmlsconsumeraccess.org/EntityDetails.aspx/COMPANY/222524) 14897 Clayton Road, Chesterfield, MO 63017 | Equal Housing Opportunity.

ListReports



VERY CONVENIENT

This home is in a **very convenient** area. Some errands in this location require a car and most major services are within **2** miles.

- ATM
0.1 MI
- GAS
0.2 MI
- GROCERIES
0.3 MI
- GYM
0.9 MI
- MEDICAL
1.2 MI
- COFFEE
9.8 MI
- PHARMACY
9.9 MI



SCHOOLS IN YOUR AREA

The assigned schools are **average** for the area.

- 5** RATING
3-5
LYONS CENTRAL
ELEMENTARY SCHOOL
ASSIGNED
- 4** RATING
6-8
LYONS MIDDLE
SCHOOL
ASSIGNED
- 5** RATING
9-12
LYONS HIGH SCHOOL
ASSIGNED



THE GREAT OUTDOORS

This home is located near a variety of outdoor activities.

POPULAR

- GOLF COURSE
LYONS TOWN & COUNTRY
CLUB
(0.6 MILES)



NEIGHBORHOOD EATS

This home is located near **2** moderately priced restaurants and has an **average** variety of cuisines.

BY CATEGORY

- FAST FOOD 1 MEXICAN 1

