

For Lease

±2,710 SF OFFICE SPACE AVAILABLE

1110 Roosevelt, Suite 200, Irvine, CA 92620

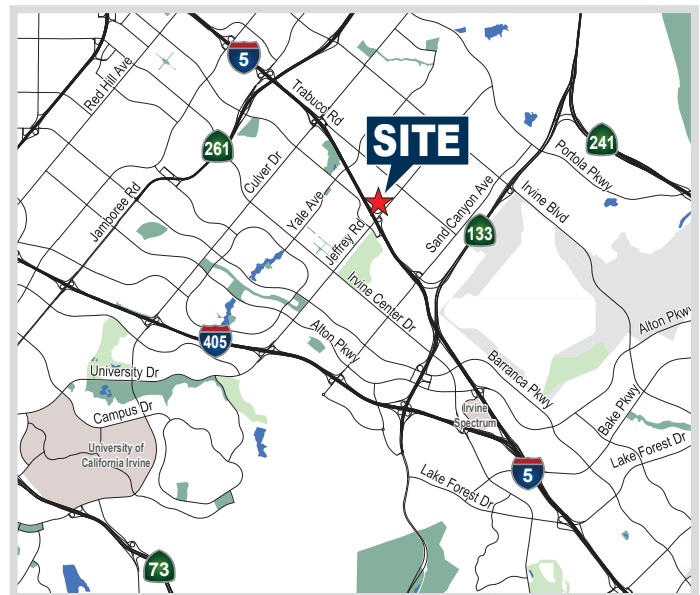
3D Property Tour



JEFFREY OFFICE PARK

FEATURES

- Suite 200; 2,710 SF
- High image, creative office space
- 4.2 Community Commercial zoning allows for a wide variety of uses
- Efficient floor plan with 4 private offices, 1 conference room, kitchenette, and private restrooms
- Windows on 3 sides provide abundant natural light
- 4:1000 parking ratio
- Easy access to the 5 freeway and the 133 toll road
- Walking distance to the Cypress Village Shopping Center, and just a 5 minute drive to the Irvine Spectrum Center, as well as many other restaurant and retail amenities



RUSS SMITH
949.565.5595
rsmith@voitco.com
Lic. #01919442



TRAVIS FORSTER
949.263.5332
tforster@voitco.com
Lic. #01935471

Touring Guidelines



Voit

REAL ESTATE SERVICES

www.VoitCo.com

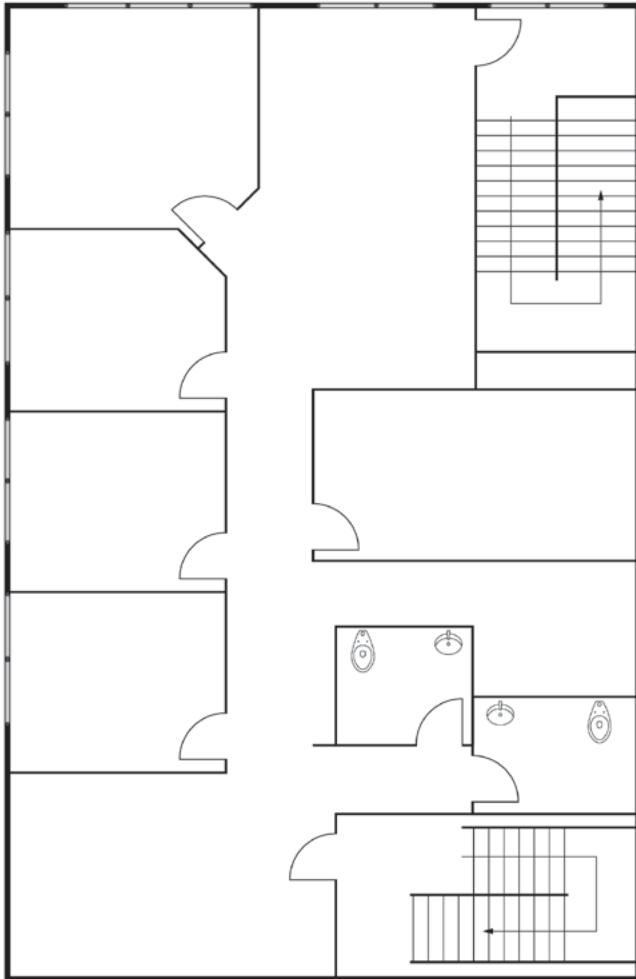
2020 Main Street, Suite 100, Irvine, CA 92614 • 949.851.5100 • 949.261.9092 Fax

For Lease

±2,710 SF OFFICE SPACE AVAILABLE

1110 Roosevelt, Suite 200, Irvine, CA 92620

3D Property Tour



RUSS SMITH
949.565.5595
rsmith@voitco.com
Lic. #01919442



TRAVIS FORSTER
949.263.5332
tforster@voitco.com
Lic. #01935471

Voit
REAL ESTATE SERVICES

www.VoitCo.com

2020 Main Street, Suite 100, Irvine, CA 92614 • 949.851.5100 • 949.261.9092 Fax

Licensed as a Real Estate Salesperson by the DRE. The information contained herein has been obtained from sources we deem reliable. While we have no reason to doubt its accuracy, we do not guarantee it. ©2021 Voit Real Estate Services, Inc. All Rights Reserved. Lic. #01991785