

# Midtown For Lease



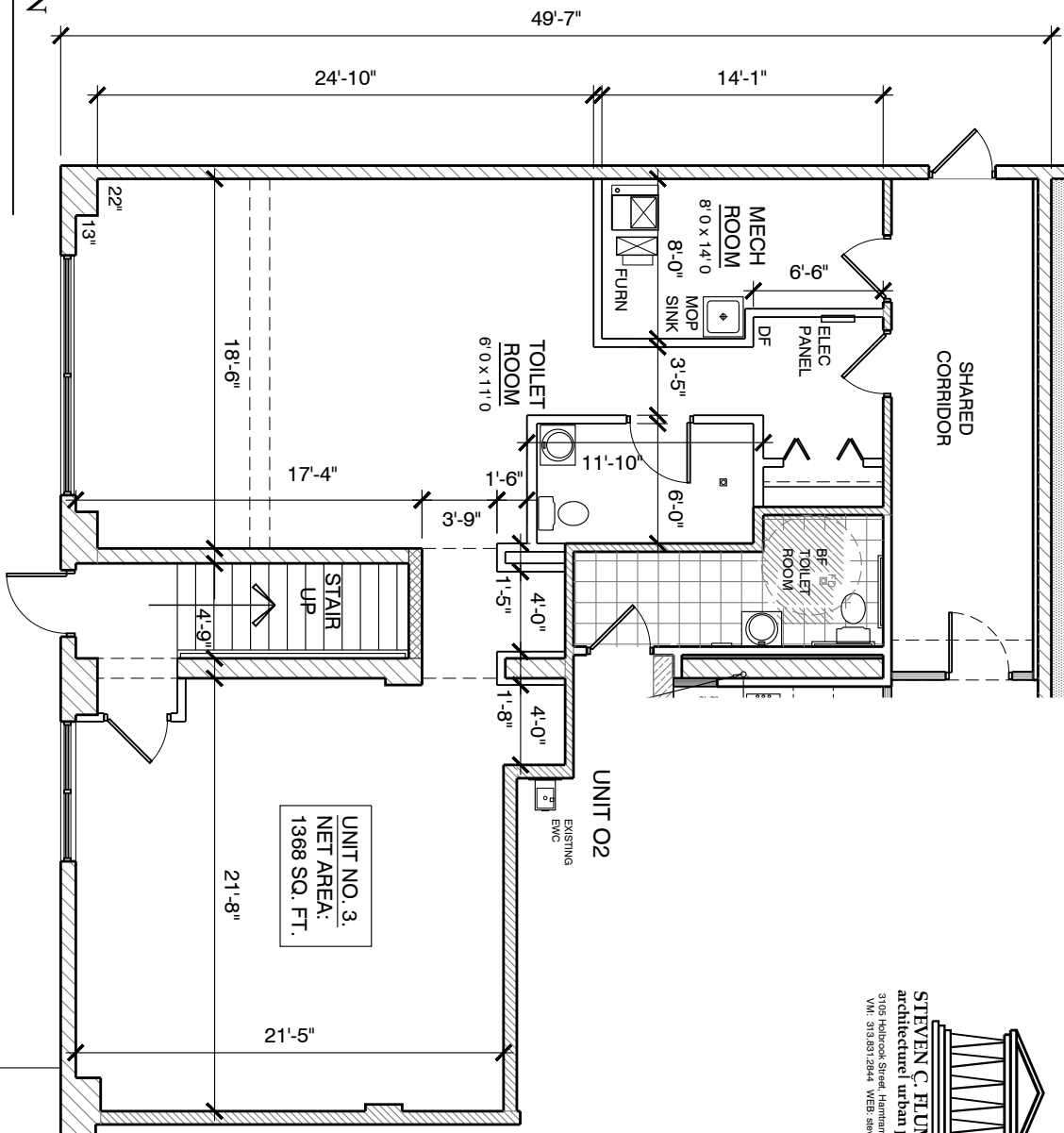
## Prime Location

Busy, walkable neighborhood in the heart of Midtown Detroit. Near Wayne State University and Detroit Medical Center. Downtown Detroit is less than 2 miles away. Exposed brick, 12 foot ceilings, new windows and cement floors. Located in the heart of Midtown Detroit. This space is customizable based on your unique needs. Parking spaces are included in the lease agreement.



4159 CASS AVENUE  
Unit 03 BUILD-OUT FLOOR PLAN

SCALE: 3/16" = 1'-0"  
DATE: 17 March 2021



**STEVEN C. FLUM, INC.**  
architectural urban planning  
3105 Holbrook Street, Hamtramck, MI 48212  
VM: 313.837.2844 WEB: stevenflum.com