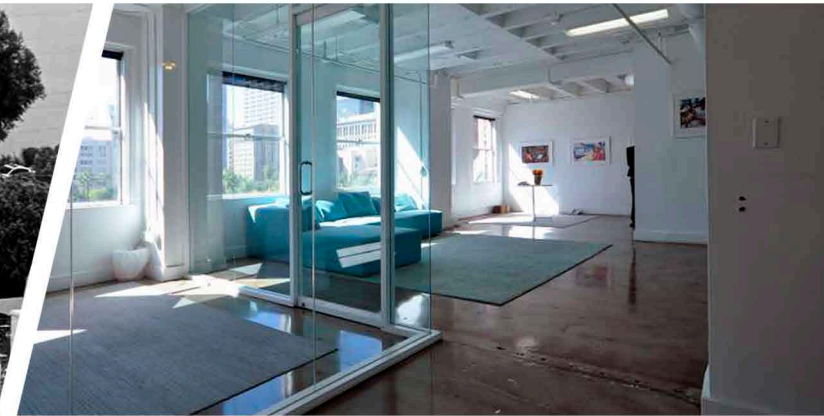
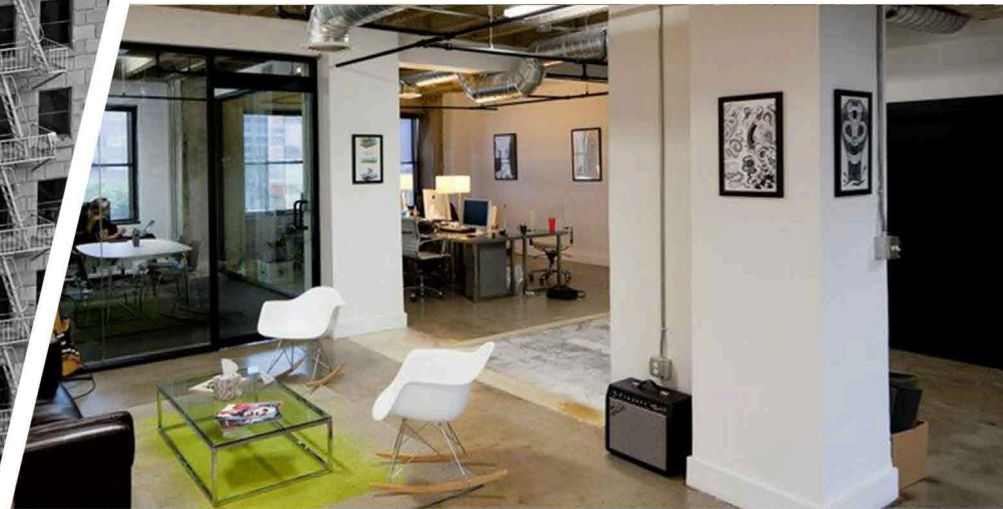


PERSHING SQUARE BUILDING

AVAILABLE NOW | DTLA CREATIVE OFFICE SUITES



SHORT & LONG TERM
LEASING / MOVE-IN
READY SUITES



448 S HILL ST | DTLA

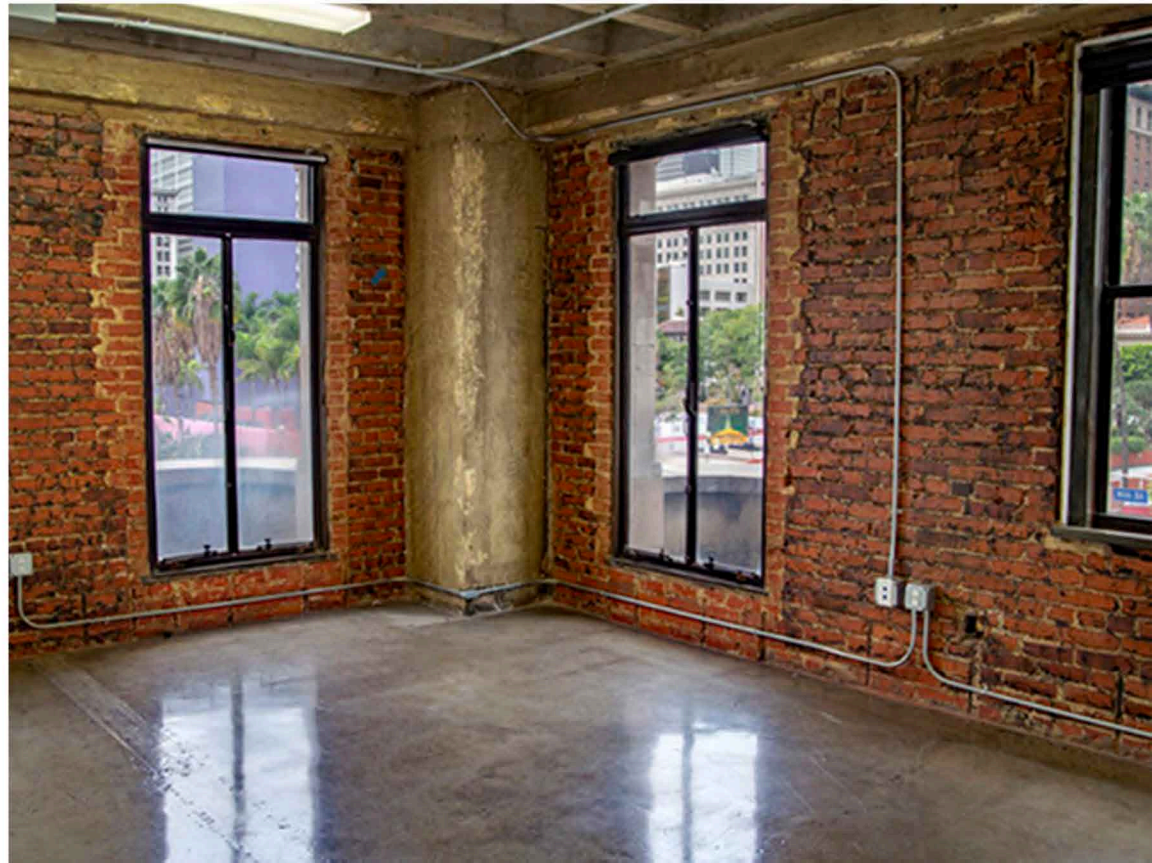


PERSHING SQUARE BUILDING

Built in 1924 by architects Claud Beelman and Aleck Curlett in the Italian Renaissance Revival style that features classic design elements, symmetry, arches, and ornamental stone brackets. Today, the Pershing Square Building is a 16 Story High-rise that is the home of Perch Rooftop Bar & Restaurant on top of the 13th floor and Mrs. Fish Japanese Restaurant, 3 levels below the Ground floor. The middle floors of the building are newly renovated, modern Creative Office Spaces for an innovative work experience in the heart of thriving DTLA!

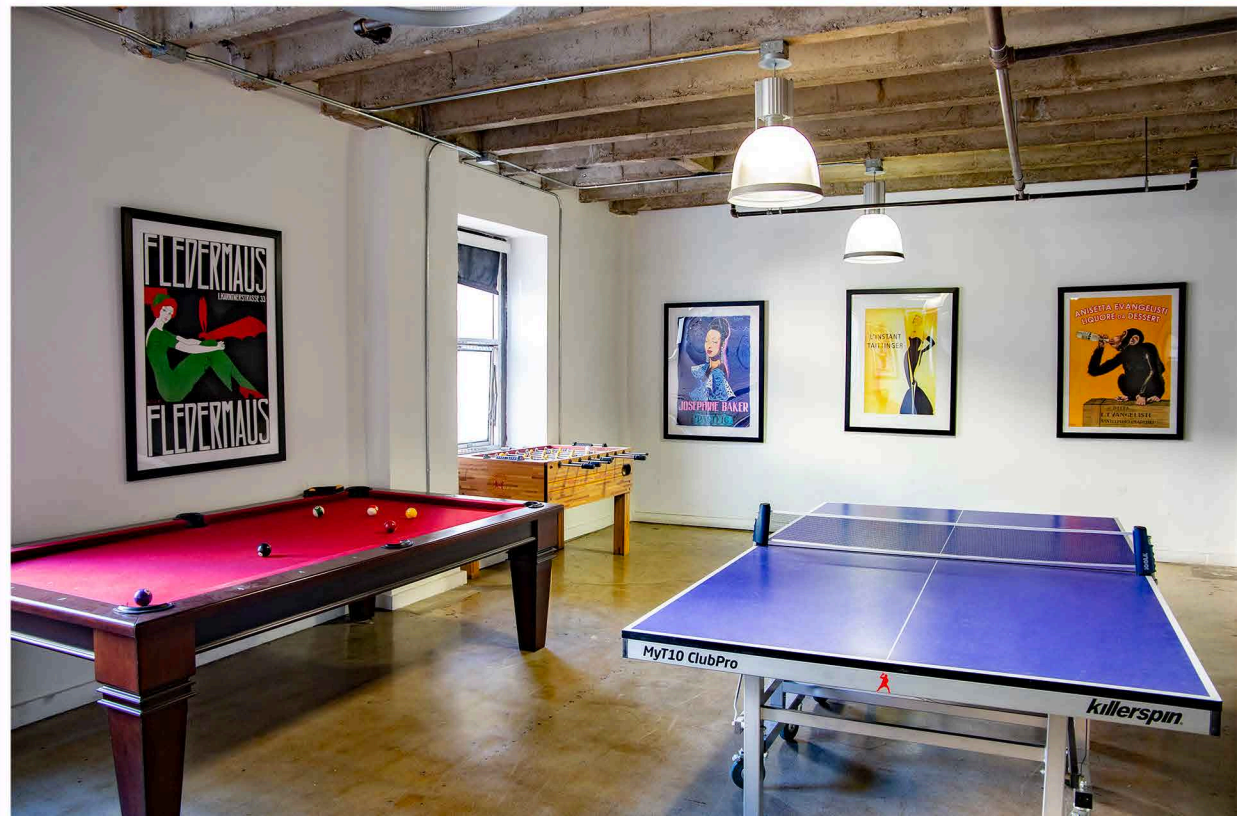
AVAILABILITIES

Full Floor Available Up to 11,603 SF
Suites Available From 1,542-6,920 SF



BUILDING FEATURES

- Unique fully functioning windows to allow airflow
- Open area workstations
 - Marvelous amenity/breakroom space with ping pong and pool tables
- Stunning combination of exposed concrete flooring and ceiling with brick wall accents
- Luxurious on-site dining with rooftop views at Perch LA and Chic, below-ground Mrs. Fish
- 24- Hour Security and on-site property management
- Parking options available upon request







CONTACT

FOR MORE INFORMATION, PLEASE CONTACT -

ELIZABETH CONDO
LEASING MANAGER
ELIZABETH.CONDO@JMFDEVELOPMENT.COM
CELL - (703) 638-4986

448SHILL.COM
448 SOUTH HILL STREET
LOS ANGELES, CA
90013