

1490 CLAREMONT BOULEVARD  
CLAREMONT, CALIFORNIA



OFFICE SPACE FOR LEASE



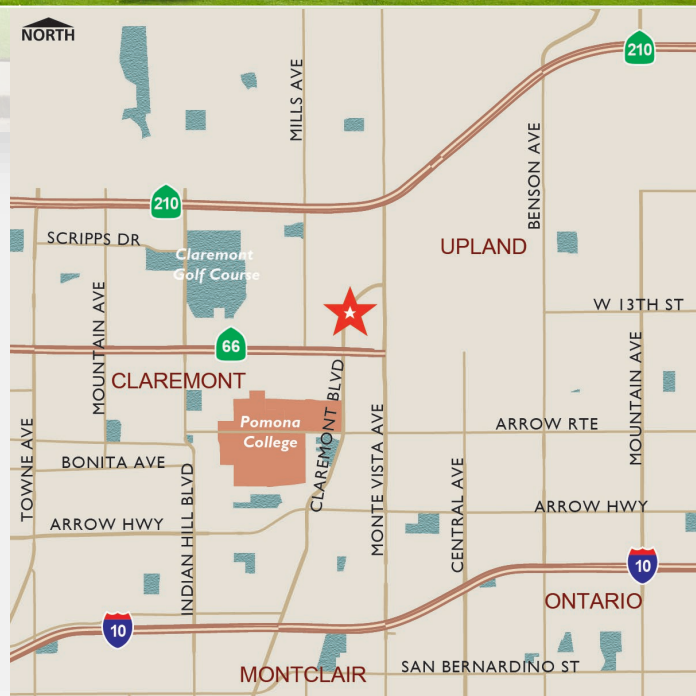
#### BUILDING FEATURES:

LEASE RATE: \$2.35 FSG

PARKING: 4/1000 Free surface parking

#### AVAILABILITIES:

SUITE	RSF	VIRTUAL TOUR	DESCRIPTION
201	2,764	<a href="#">Click for VT</a>	4 offices, 1 conference room, storage room, open office area



For more information, please contact:

#### SEAN KERN

Senior Director  
(909) 942-4691  
sean.kern@cushwake.com  
Lic. #01377294

#### RYAN RUSSELL

Director  
(909) 942-4697  
ryan.russell@cushwake.com  
Lic. #01505274

#### CUSHMAN & WAKEFIELD, INC.

Lic. #00616335  
901 N. Via Piemonte, Suite 200  
Ontario, California 91764  
www.cushmanwakefield.com

The depiction in the included photograph of any person, entity, sign, logo or property, other than Cushman & Wakefield's (C&W) client and the property offered by C&W, is incidental only, and is not intended to connote any affiliation, connection, association, sponsorship or approval by or between that which is incidentally depicted and C&W or its client. This listing shall not be deemed an offer to lease, sublease or sell such property; and, in the event of any transaction for such property, no commission shall be earned by or payable to any cooperating broker except if otherwise provided pursuant to the express terms, rates and conditions of C&W's agreement with its principal, if, as and when such commission (if any) is actually received from such principal. (A copy of the rates and conditions referred to above with respect to this property is available upon request.)

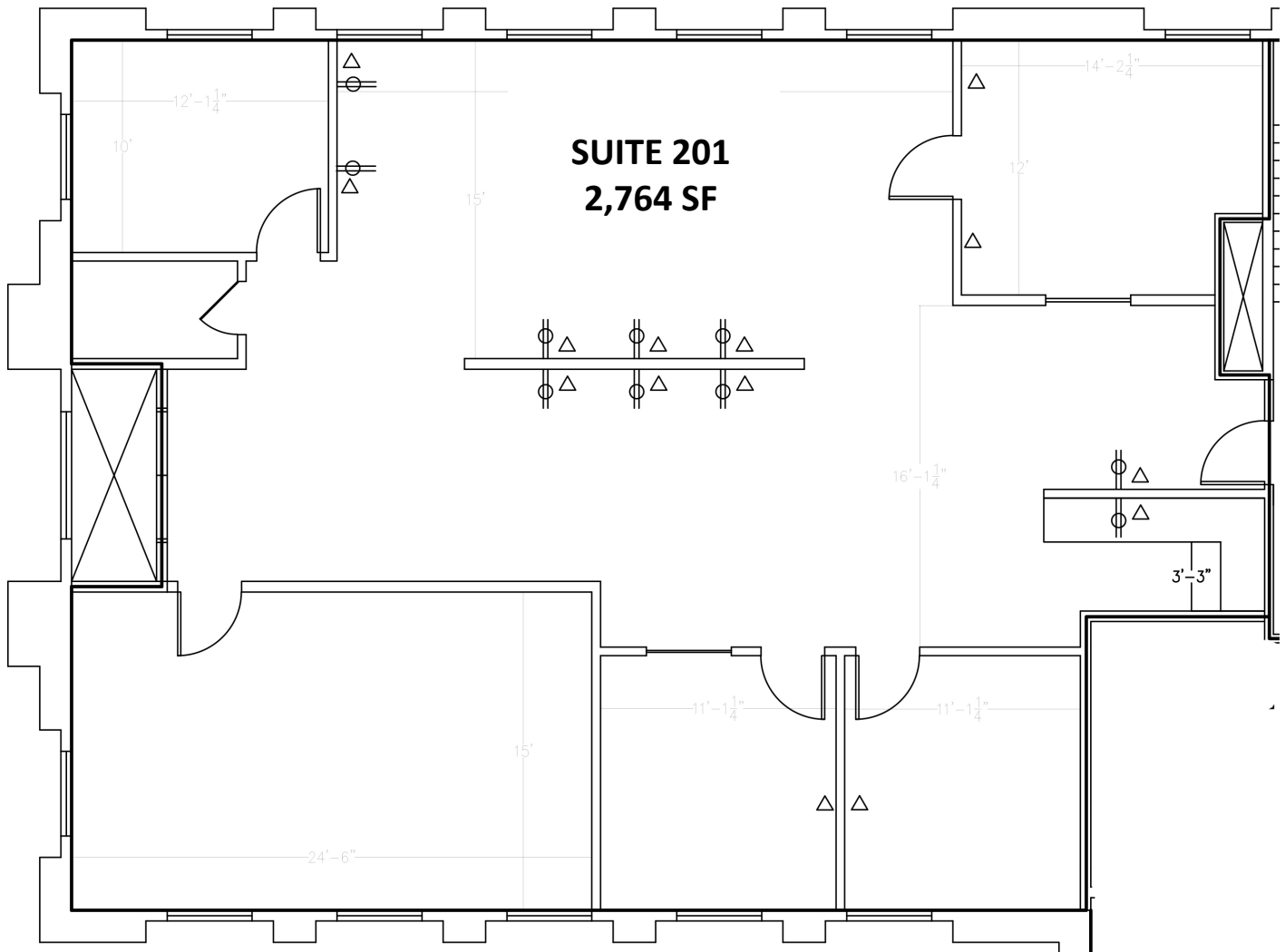
# 1490 CLAREMONT BLVD | CLAREMONT, CA

Office Space for Lease

Up to  
7,649 SF  
AVAILABLE



VIRTUAL TOUR



For more information, please contact:

**SEAN KERN**

Senior Director  
(909) 942-4691  
sean.kern@cushwake.com  
Lic. #01377294

**RYAN RUSSELL**

Director  
(909) 942-4697  
ryan.russell@cushwake.com  
Lic. #01505274

**CUSHMAN & WAKEFIELD, INC.**

Lic. #00616335  
901 N. Via Piemonte, Suite 200  
Ontario, California 91764  
www.cushmanwakefield.com

The depiction in the included photograph of any person, entity, sign, logo or property, other than Cushman & Wakefield's (C&W) client and the property offered by C&W, is incidental only, and is not intended to connote any affiliation, connection, association, sponsorship or approval by or between that which is incidentally depicted and C&W or its client. This listing shall not be deemed an offer to lease, sublease or sell such property; and, in the event of any transaction for such property, no commission shall be earned by or payable to any cooperating broker except if otherwise provided pursuant to the express terms, rates and conditions of C&W's agreement with its principal, if, as and when such commission (if any) is actually received from such principal. (A copy of the rates and conditions referred to above with respect to this property is available upon request.)