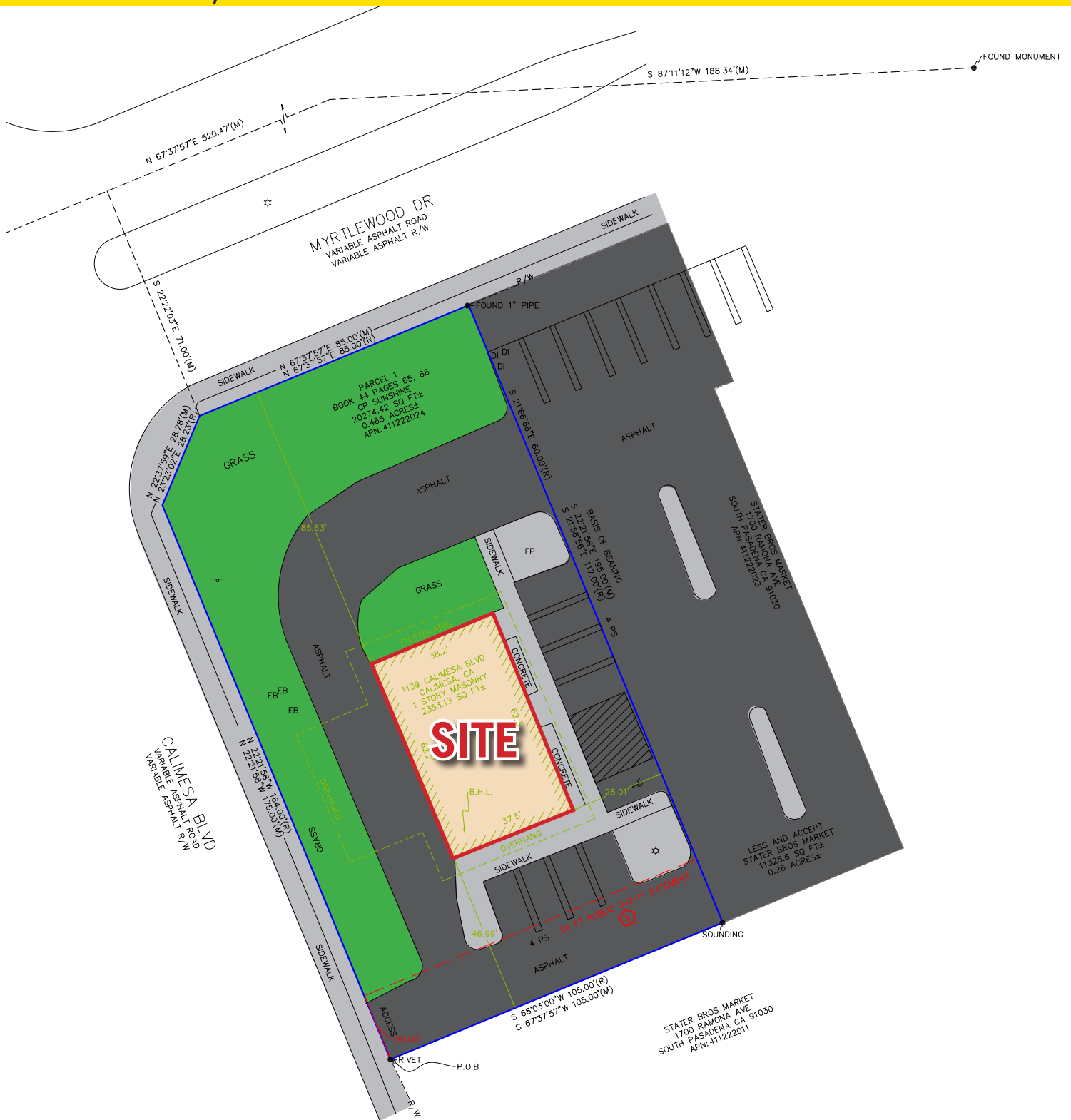




FOR LEASE - CALIMESA PLAZA

1139 Calimesa Blvd. | Calimesa, CA 92320

±2,362 SF FORMER BANK DRIVE THRU



LEE & ASSOCIATES
COMMERCIAL REAL ESTATE SERVICES

NICK WIRICK
951.276.3636
nwirick@leeriverside.com
DRE# 01304661

CHRIS BEAUCHAMP
951.276.3675
cbeauchamp@leeriverside.com
DRE# 01982753

MIRANDA MONTGOMERY
951.276.3656
mmontgomery@leeriverside.com
DRE# 02087985

No warranty or representation has been made to the accuracy of the foregoing information. Terms of sale or lease and availability are subject to change or withdrawal without notice.
Lee & Associates Commercial Real Estate Services, Inc. - Riverside. 3240 Mission Inn Avenue - Riverside, CA 92507 | Corporate DRE# 01048055



FOR LEASE - CALIMESA PLAZA

1139 Calimesa Blvd. | Calimesa, CA 92320

±2,362 SF FORMER BANK DRIVE THRU



LEE & ASSOCIATES

COMMERCIAL REAL ESTATE SERVICES

NICK WIRICK

951.276.3636

nwirick@leeriverside.com

DRE# 01304661

CHRIS BEAUCHAMP

951.276.3675

cbeauchamp@leeriverside.com

DRE# 01982753

MIRANDA MONTGOMERY

951.276.3656

mmontgomery@leeriverside.com

DRE# 02087985

No warranty or representation has been made to the accuracy of the foregoing information. Terms of sale or lease and availability are subject to change or withdrawal without notice. Lee & Associates Commercial Real Estate Services, Inc. - Riverside. 3240 Mission Inn Avenue - Riverside, CA 92507 | Corporate DRE# 01048055