

HIGHLY VISIBLE STREET RETAIL ON MAJOR INTERSECTION

7200-7220 S BROADWAY, LOS ANGELES, CA 90003



GREG OFFSAY (818) 697-9387

greg@illicre.com · DRE#01837719

JOSEPH GOBERT (818) 514-3494

jgobert@illicre.com · DRE#01900768



17547 Ventura Blvd., Ste. 304 · Encino CA 91316 · 818.501.2212/Phone · 818.501.2202/Fax · www.illicre.com · DRE #01834124

This information has been secured from sources we believe to be reliable, but we make no representations or warranties, expressed or implied, as to the accuracy of the information. References to square footage are approximate. References to neighboring retailers are subject to change, and may not be adjacent to the vacancy being marketed either prior to, during, or after leases are signed. Lessee must verify the information and bears all risk for any inaccuracies.

HIGHLY VISIBLE STREET RETAIL ON MAJOR INTERSECTION

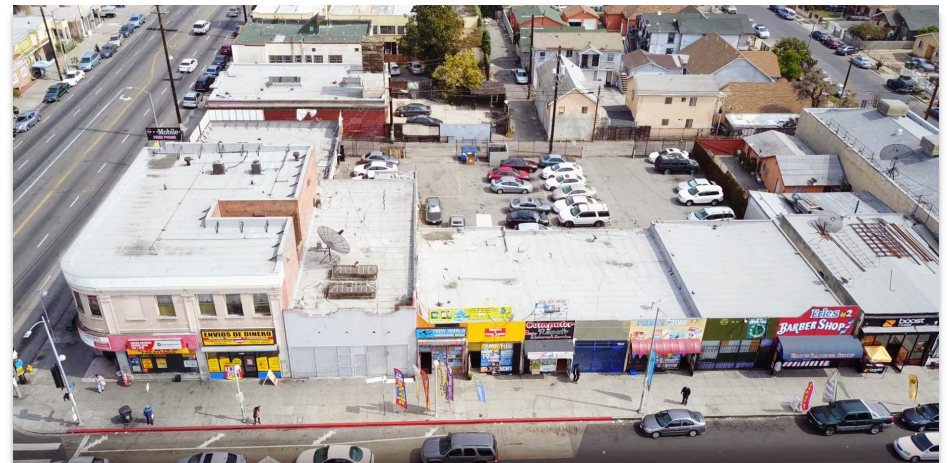
7200-7220 S BROADWAY, LOS ANGELES, CA 90003

PROPERTY FEATURES

- Approx. 1,360 SF Available
- Highly Visible Retail
- Building Signage
- Rear Parking Lot
- Established retail corridor and neighbors

AREA AMENITIES

- Densely populated South LA Location
- 1.3 million residents in a 1-mile radius
- Located a few blocks from the 77th Street LAPD Station
- Convenient access to the 110 Freeway
- Adjacent multiple Metro Bus Lines



DEMOS	1 mile	3 mile	5 mile
Population	64,594	485,651	1,097,285
Avg. HH Income	\$45,688	\$51,158	\$57,590
Daytime Pop.	48,425	371,430	851,495
Traffic Count	±63,748 cars per day		

GREG OFFSAY (818) 697-9387

greg@illicre.com · DRE#01837719

JOSEPH GOBERT (818) 514-3494

jgobert@illicre.com · DRE#01900768



17547 Ventura Blvd., Ste. 304 · Encino CA 91316 · 818.501.2212/Phone · 818.501.2202/Fax · www.illicre.com · DRE #01834124

This information has been secured from sources we believe to be reliable, but we make no representations or warranties, expressed or implied, as to the accuracy of the information. References to square footage are approximate. References to neighboring retailers are subject to change, and may not be adjacent to the vacancy being marketed either prior to, during, or after leases are signed. Lessee must verify the information and bears all risk for any inaccuracies.

HIGHLY VISIBLE STREET RETAIL ON MAJOR INTERSECTION

7200-7220 S BROADWAY, LOS ANGELES, CA 90003



GREG OFFSAY (818) 697-9387

greg@illicre.com · DRE#01837719

JOSEPH GOBERT (818) 514-3494

jgobert@illicre.com · DRE#01900768



17547 Ventura Blvd., Ste. 304 · Encino CA 91316 · 818.501.2212/Phone · 818.501.2202/Fax · www.illicre.com · DRE #01834124

This information has been secured from sources we believe to be reliable, but we make no representations or warranties, expressed or implied, as to the accuracy of the information. References to square footage are approximate. References to neighboring retailers are subject to change, and may not be adjacent to the vacancy being marketed either prior to, during, or after leases are signed. Lessee must verify the information and bears all risk for any inaccuracies.