

# 138-42 Jamaica Avenue

Corner of 139th & Jamaica Ave | Queens



Over 6,000 SF on Prime Retail Corner

Conceptual Rendering

# 138-42 Jamaica Avenue

Corner of 139th & Jamaica Ave | Queens

SIZE: 6,000 SF Ground (divisible)  
 FRONTAGE: 150' Wraparound  
 CEILING HEIGHT: 10'+  
 POSSESSION: 6-12 months  
 TRANSPORTATION: **E Q24 Q54 Q56 Q60**

## HIGHLIGHTS:

- All logical divisions considered
- Brand new development
- High foot traffic corner
- 150' corner frontage along Jamaica Avenue

## NEIGHBORING TENANTS:



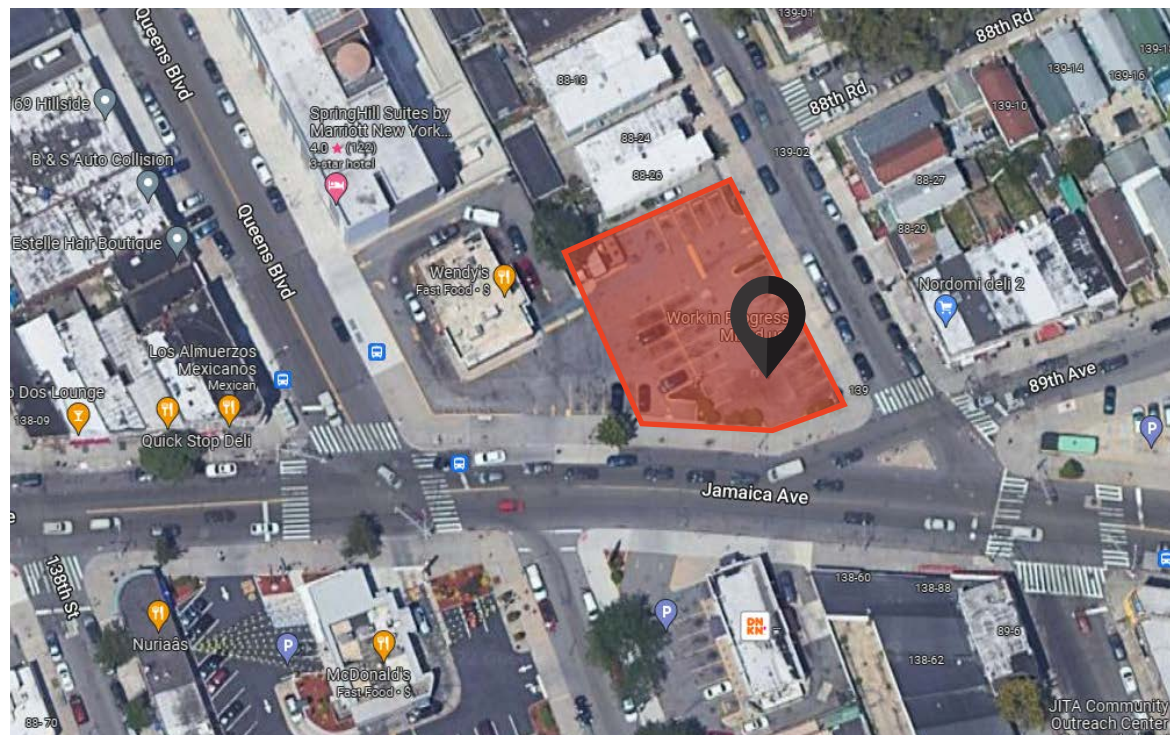
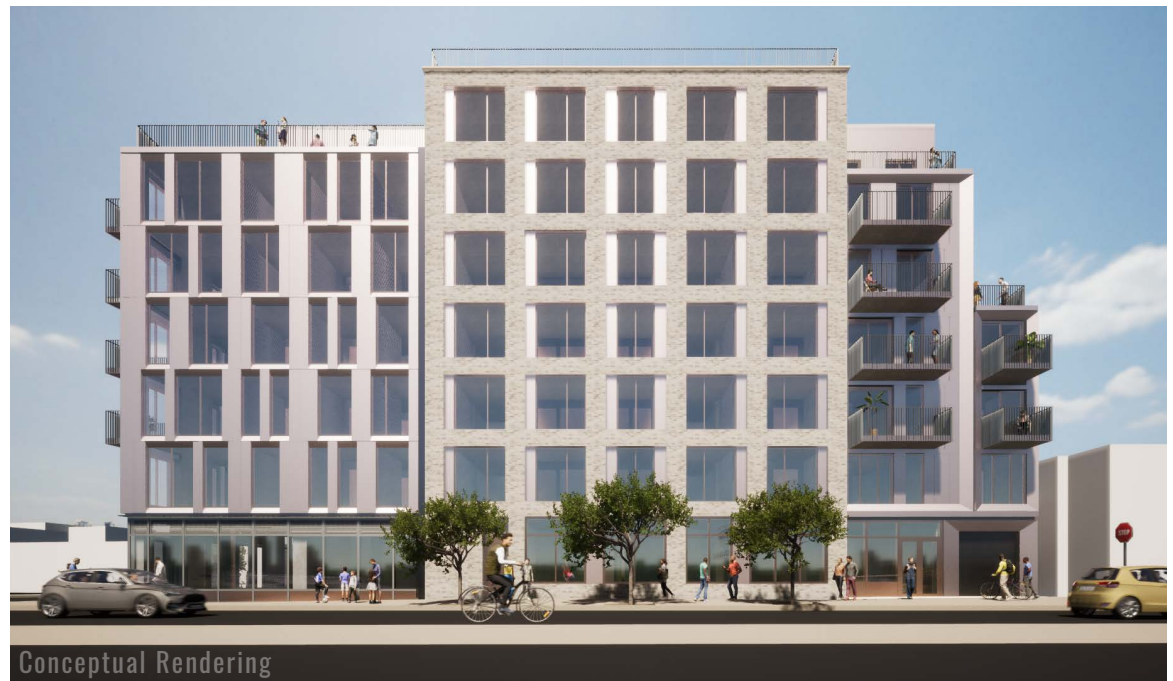
CONTACT OUR BROKERS FOR MORE INFORMATION:

**GEORGE SKALIARINIS**

GeorgeS@ksrny.com  
 347.844.0183

**MARK GALLUCCI**

MGallucci@ksrny.com  
 718.551.5387





# 138-42 Jamaica Avenue

Corner of 139th & Jamaica Ave | Queens



CONTACT OUR BROKERS FOR MORE INFORMATION:

**GEORGE SKALIARINIS**

GeorgeS@ksrny.com

347.844.0183

**MARK GALLUCCI**

MGallucci@ksrny.com

718.551.5387

All information supplied in this marketing presentation and/or flyer is from sources deemed reliable and is furnished subject to errors, omissions, modifications, removal of listings from sale/lease and to any listing condition. Any square footage, dimensions, floor plans and/or technical data set forth are approximations and are subject to further elaboration/confirmation.

