

# FOR SALE

## ±4,800 SF

### Freestanding Industrial/Warehouse Building

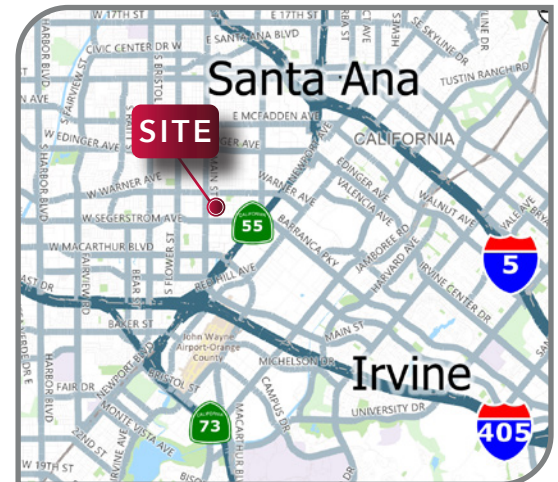
## 2602

### Orange Avenue Santa Ana, CA



#### PROPERTY HIGHLIGHTS

- ±4,800 SF Freestanding Industrial/Warehouse Building
- Reception, Office, 2 Restrooms
- ±11,154 Sq. Ft. Parcel
- Two (2) GL Loading Doors
- Large Concrete Fenced Yard
- 400 Amp Panel (verify)
- Corner Lot
- Excellent Access to 55,405 Freeways & 73 Corridor



**LEE & ASSOCIATES**  
COMMERCIAL REAL ESTATE SERVICES

**Greg Diab, CCIM**

Principal | Lee & Associates - Orange

**714-564-7171**

DRE# 01098015

[gdiab@lee-associates.com](mailto:gdiab@lee-associates.com)

**Jack Haley, CCIM**

Principal | Lee & Associates - Orange

**714-564-7172**

DRE# 01064859

[jhaley@lee-associates.com](mailto:jhaley@lee-associates.com)

All information contained herein has been provided by Seller/Lessor and/or third parties, but has not been independently verified by Lee & Associates or its agent(s). Buyer/Lessee and interested parties should independently verify all information communicated by these sources.

# FOR SALE

## ±4,800 SF

### Freestanding Industrial/Warehouse Building

# 2602

## Orange Avenue Santa Ana, CA

#### PHOTOS



- Two (2) GL Loading Doors
- Large Concrete Fenced Yard
- Corner Lot



**LEE & ASSOCIATES**  
COMMERCIAL REAL ESTATE SERVICES

**Greg Diab, CCIM**

Principal | Lee & Associates - Orange

**714-564-7171**

DRE# 01098015

[gdiab@lee-associates.com](mailto:gdiab@lee-associates.com)

**Jack Haley, CCIM**

Principal | Lee & Associates - Orange

**714-564-7172**

DRE# 01064859

[jhaley@lee-associates.com](mailto:jhaley@lee-associates.com)

All information contained herein has been provided by Seller/Lessor and/or third parties, but has not been independently verified by Lee & Associates or its agent(s). Buyer/Lessee and interested parties should independently verify all information communicated by these sources.



# FOR SALE

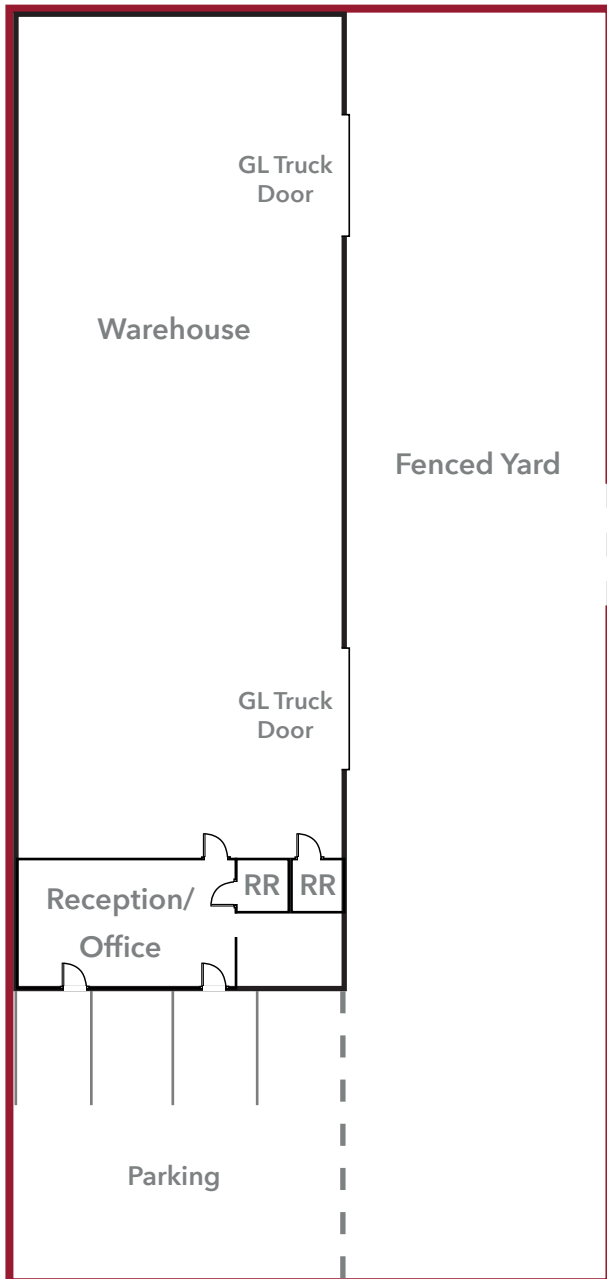
## ±4,800 SF

### Freestanding Industrial/Warehouse Building

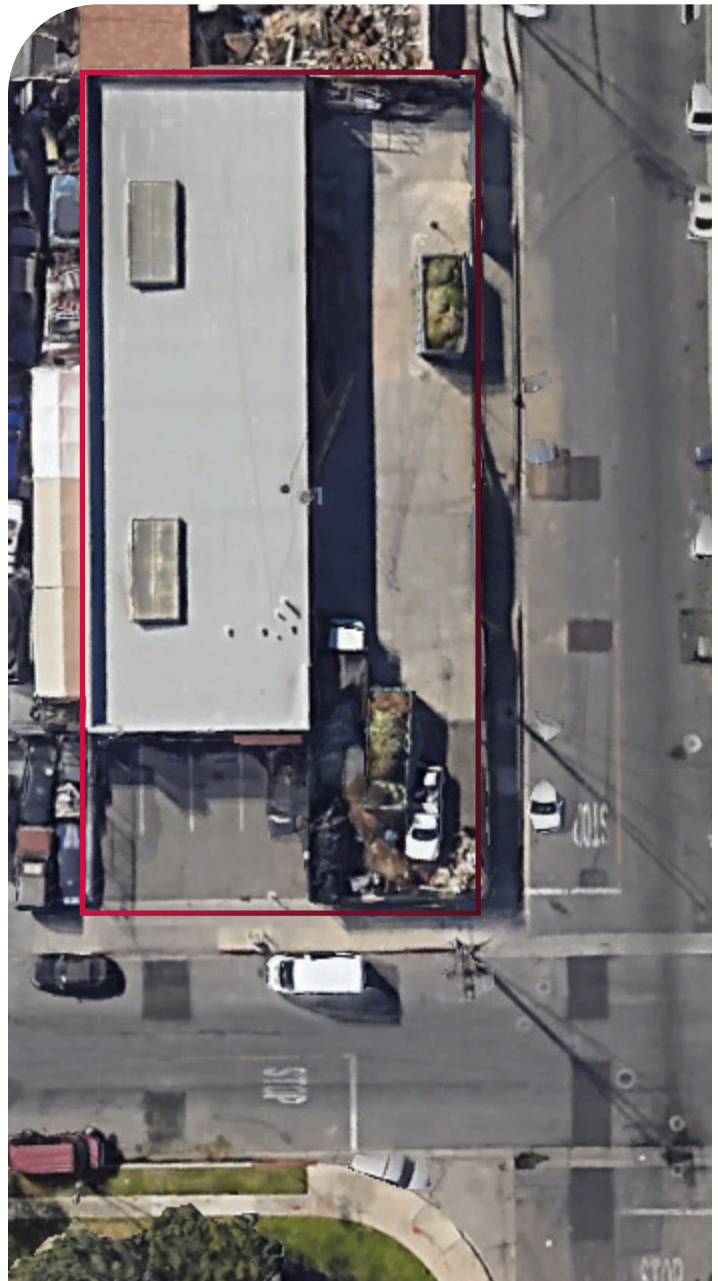
# 2602

## Orange Avenue Santa Ana, CA

#### SITE PLAN



Not to Scale



**LEE & ASSOCIATES**  
COMMERCIAL REAL ESTATE SERVICES

**Greg Diab, CCIM**

Principal | Lee & Associates - Orange

**714-564-7171**

DRE# 01098015

[gdiab@lee-associates.com](mailto:gdiab@lee-associates.com)

**Jack Haley, CCIM**

Principal | Lee & Associates - Orange

**714-564-7172**

DRE# 01064859

[jhaley@lee-associates.com](mailto:jhaley@lee-associates.com)

All information contained herein has been provided by Seller/Lessor and/or third parties, but has not been independently verified by Lee & Associates or its agent(s). Buyer/Lessee and interested parties should independently verify all information communicated by these sources.